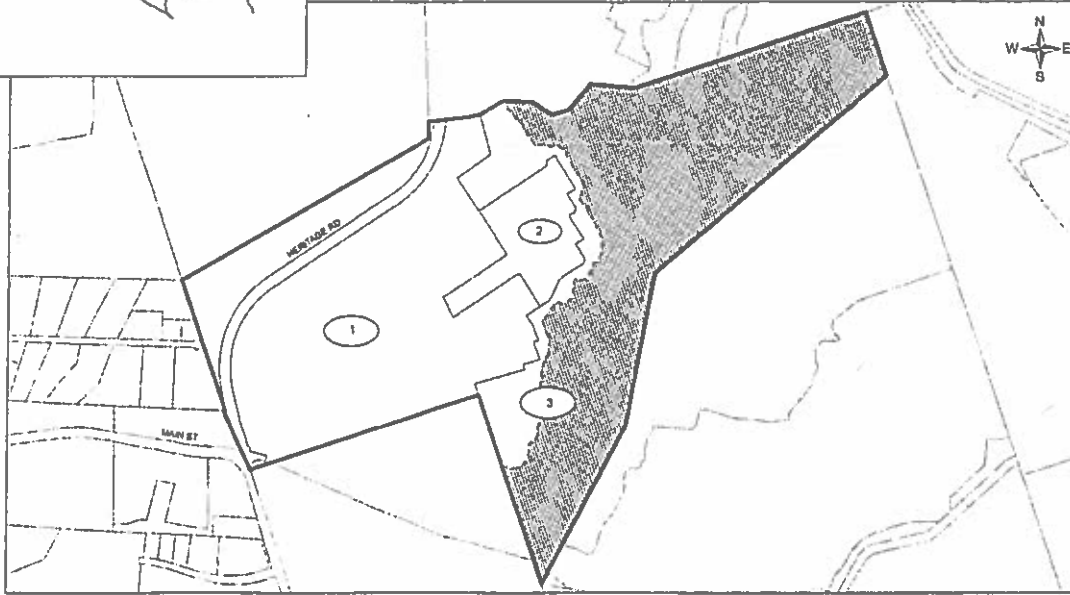
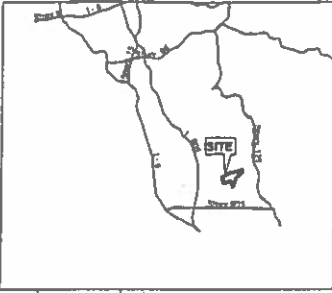


PROPOSED BOUNDARIES OF
COMMUNITY FACILITIES DISTRICT NO. 18M
(OTAY RANCH VILLAGE 3)
CITY OF CHULA VISTA
COUNTY OF SAN DIEGO, STATE OF CALIFORNIA

VICINITY MAP



FILED IN THE OFFICE OF THE CITY CLERK OF THE CITY OF CHULA VISTA THIS 22nd DAY OF ~~August~~ 2016.
Debra A. Hebb
CITY CLERK
CITY OF CHULA VISTA
STATE OF CALIFORNIA



HEREBY I CERTIFY THAT THE WITHIN MAP SHOWING PROPOSED BOUNDARIES OF COMMUNITY FACILITIES DISTRICT NO. 18M OTAY RANCH VILLAGE 3 OF THE CITY OF CHULA VISTA, COUNTY OF SAN DIEGO, STATE OF CALIFORNIA, WAS APPROVED BY THE CITY COUNCIL OF THE CITY OF CHULA VISTA AT A REGULAR MEETING THEREOF HELD ON THE 22nd DAY OF ~~August~~ 2016 BY ITS RESOLUTION NO. ~~2016-07~~

Debra A. Hebb
CITY CLERK
CITY OF CHULA VISTA
STATE OF CALIFORNIA



FILED THIS 11th DAY OF OCTOBER, 2016 AT THE HOUR OF 12:30 O'CLOCK PM IN BOOK 11A PAGE 16 OF MAPS OF ASSESSMENT AND COMMUNITY FACILITIES DISTRICTS IN THE OFFICE OF THE COUNTY RECORDER IN THE COUNTY OF SAN DIEGO, CALIFORNIA. FILE NO. 2016-7000437

Robert J. Deffenburg, Jr.
COUNTY RECORDER
COUNTY OF SAN DIEGO
STATE OF CALIFORNIA
ROBERT J. DEFFENBURG, JR.

THE LINES AND DIMENSIONS OF EACH LOT OR PARCEL ENCOMPASSED BY THE MAP SHALL BE THOSE LINES AND DIMENSIONS AS SHOWN ON THE SAN DIEGO COUNTY ASSESSOR'S MAPS.

THE SAN DIEGO COUNTY ASSESSOR'S MAPS SHALL GOVERN FOR ALL DETAILS CONCERNING THE LINES AND DIMENSIONS OF SUCH LOTS OR PARCELS.

THE BOUNDARY MAP MAY BE AMENDED BY RESOLUTION OF THE CITY COUNCIL OF THE CITY OF CHULA VISTA UPON THE CREATION OF A LEGAL PARCEL OR PARCELS TO DELINEATE THE FUTURE EXCLUDED AREA TO DELETE THE FUTURE EXCLUDED AREA FROM THE BOUNDARIES OF SUCH COMMUNITY FACILITIES DISTRICT.

- Legend**
- DISTRICT BOUNDARY
 - FUTURE EXCLUDED AREA
 - MAP REFERENCE NUMBER

MAP REFERENCE NUMBER	ASSESSOR'S PARCEL NUMBER
1	644-060-25-00
2	644-060-26-00
3	644-060-27-00



BK 46 PG 6

2016-7000437

2016-7000437

BK 46 PG 6