



Auto Collision and Vehicle Repair

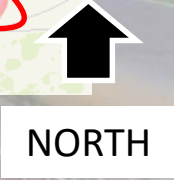
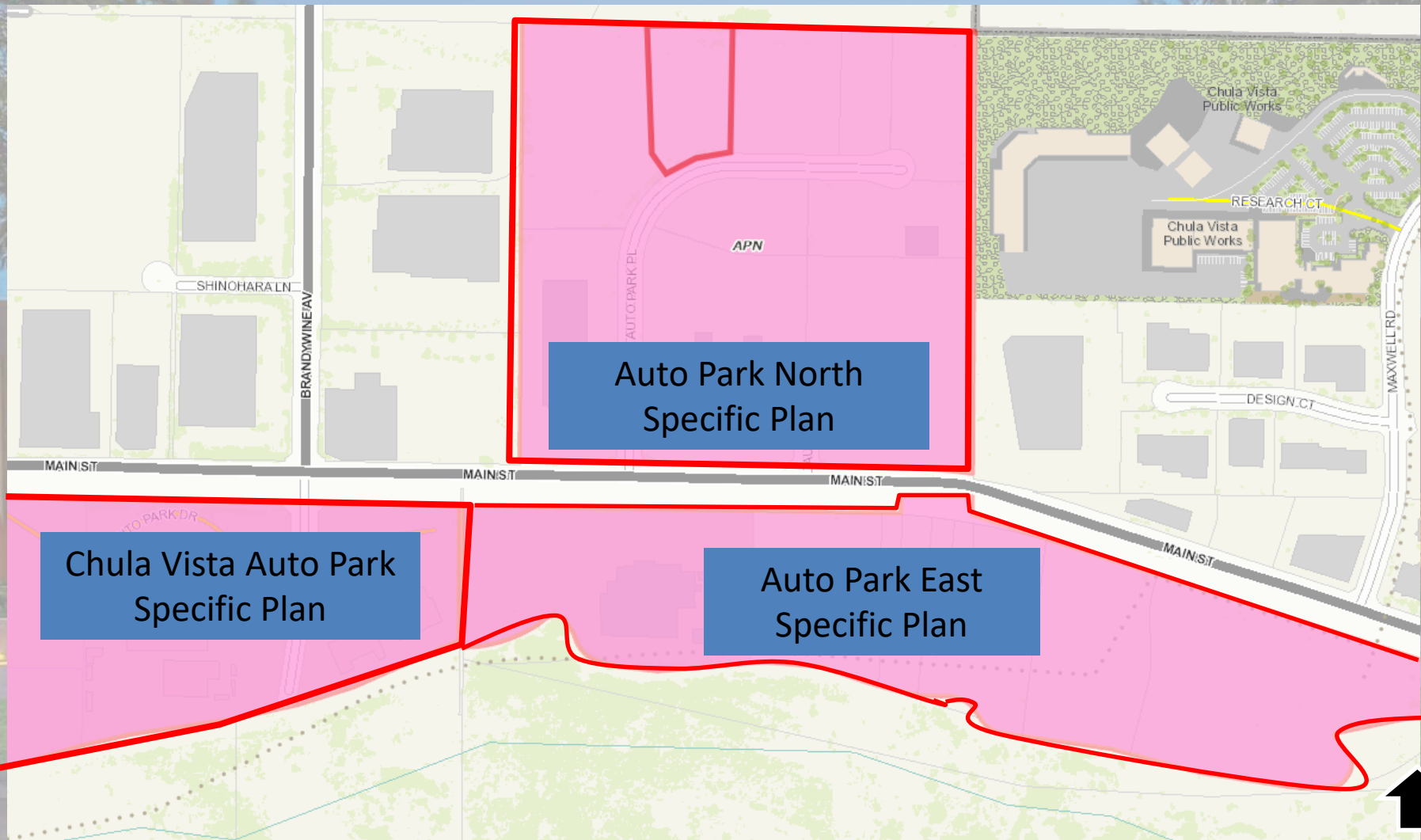
July 28, 2020

DR19-0025

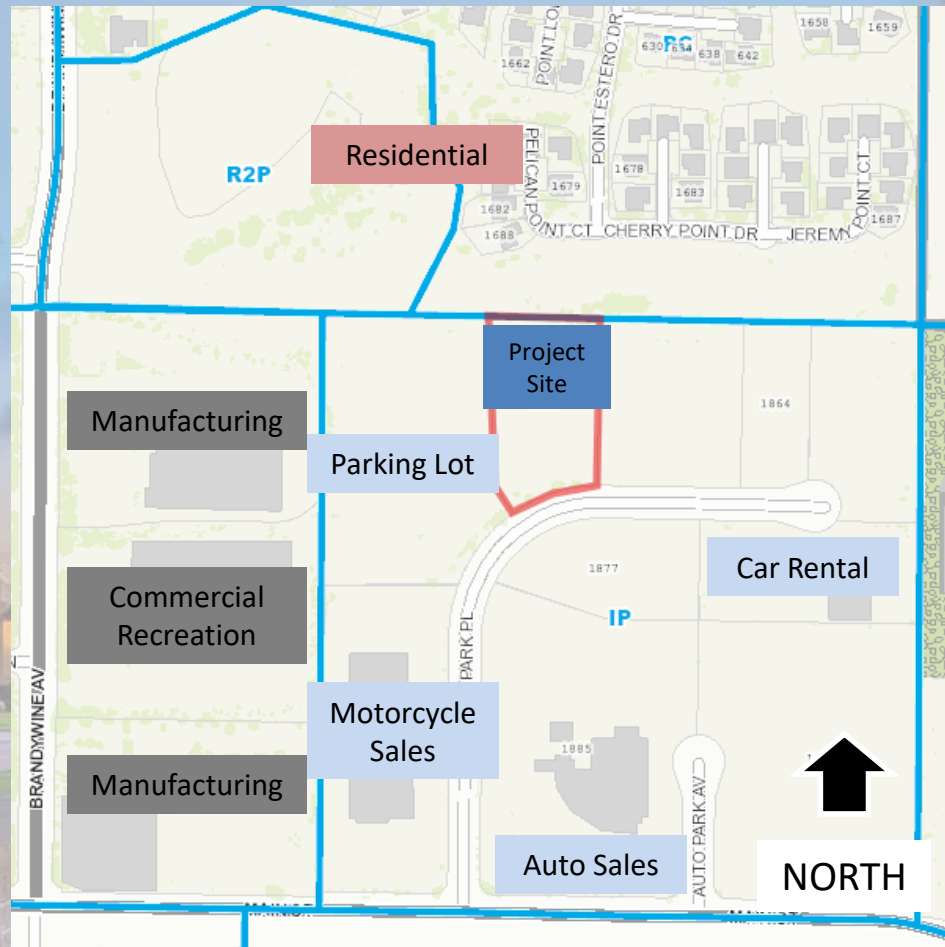




LOCATION MAP



Auto Park Specific Plan



EXISTING LAND USES



Facing North



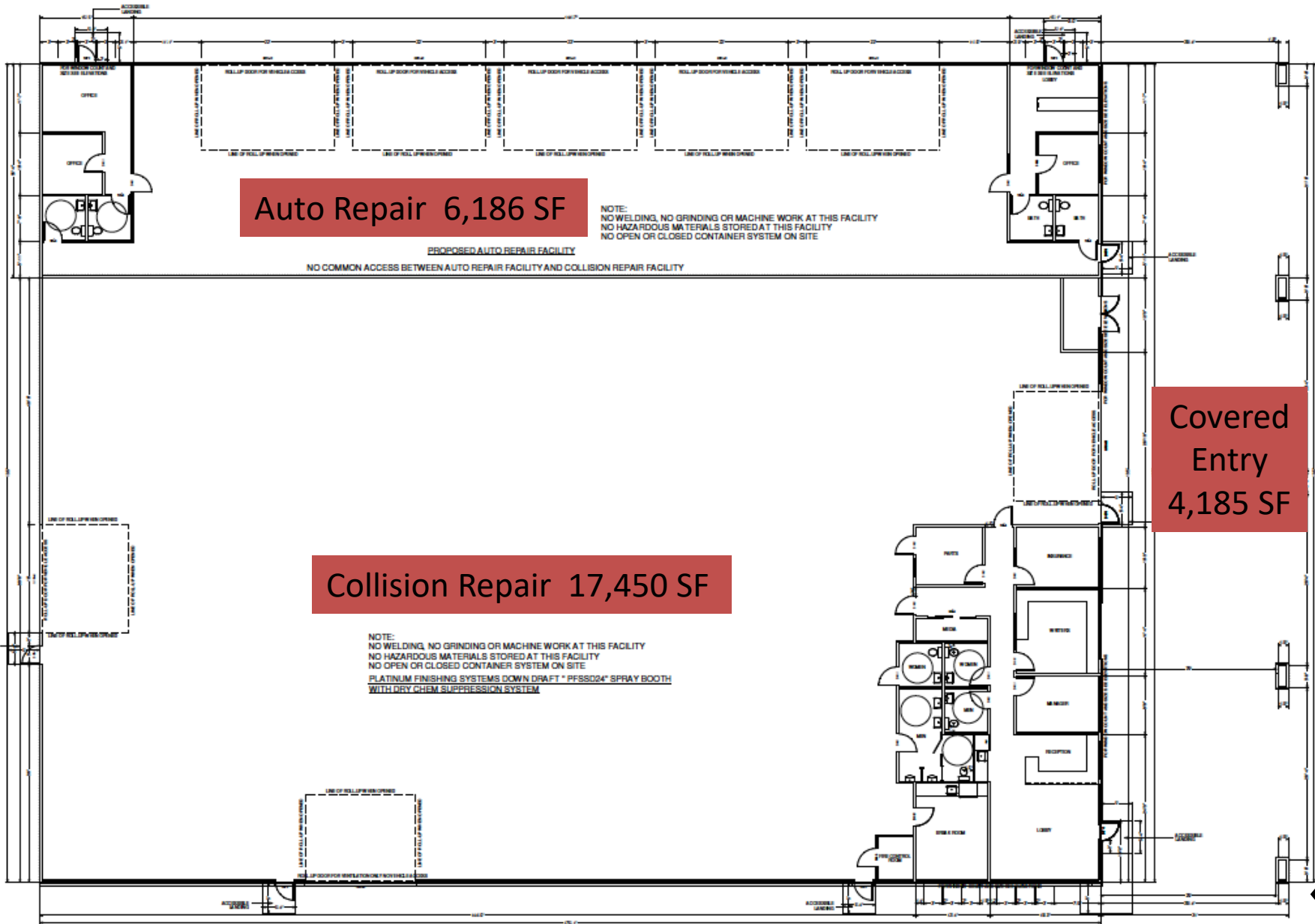
View from West to East





View from North to South





Auto Repair 6,186 SF

NOTE:
 NO WELDING, NO GRINDING OR MACHINE WORK AT THIS FACILITY
 NO HAZARDOUS MATERIALS STORED AT THIS FACILITY
 NO OPEN OR CLOSED CONTAINER SYSTEM ON SITE

EXPOSED AUTO REPAIR FACILITY

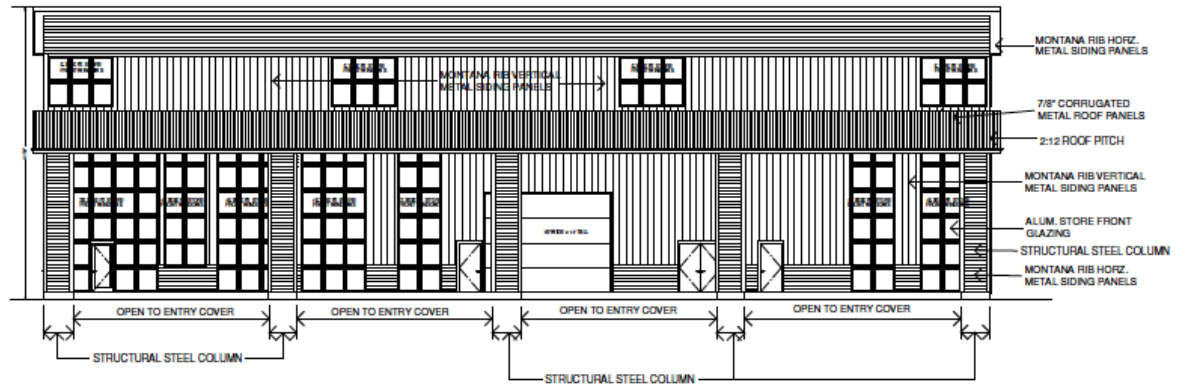
NO COMMON ACCESS BETWEEN AUTO REPAIR FACILITY AND COLLISION REPAIR FACILITY

Collision Repair 17,450 SF

NOTE:
 NO WELDING, NO GRINDING OR MACHINE WORK AT THIS FACILITY
 NO HAZARDOUS MATERIALS STORED AT THIS FACILITY
 NO OPEN OR CLOSED CONTAINER SYSTEM ON SITE
PLATINUM FINISHING SYSTEMS DOWN DRAFT "PFSS024" SPRAY BOOTH
 WITH DRY CHEM SUPPRESSION SYSTEM

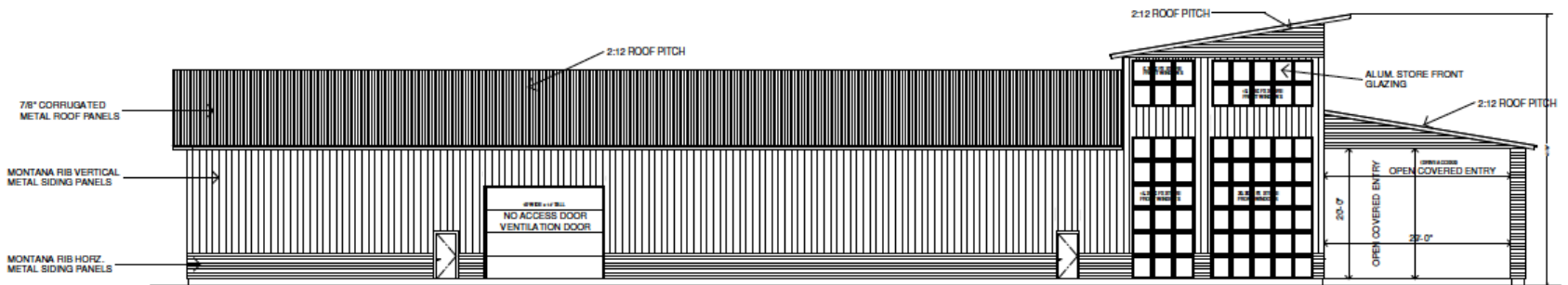
Covered Entry 4,185 SF





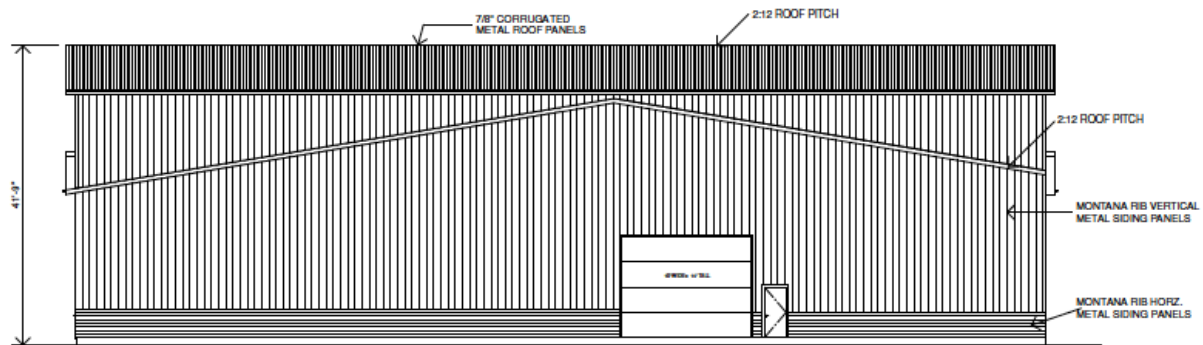
SOUTH ELEVATION

SCALE 1/8" = 1'-0"

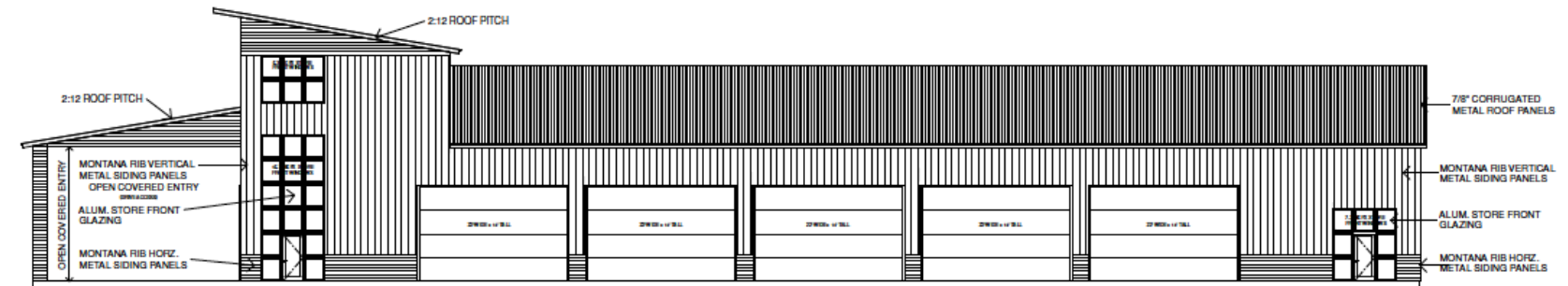


WEST ELEVATION

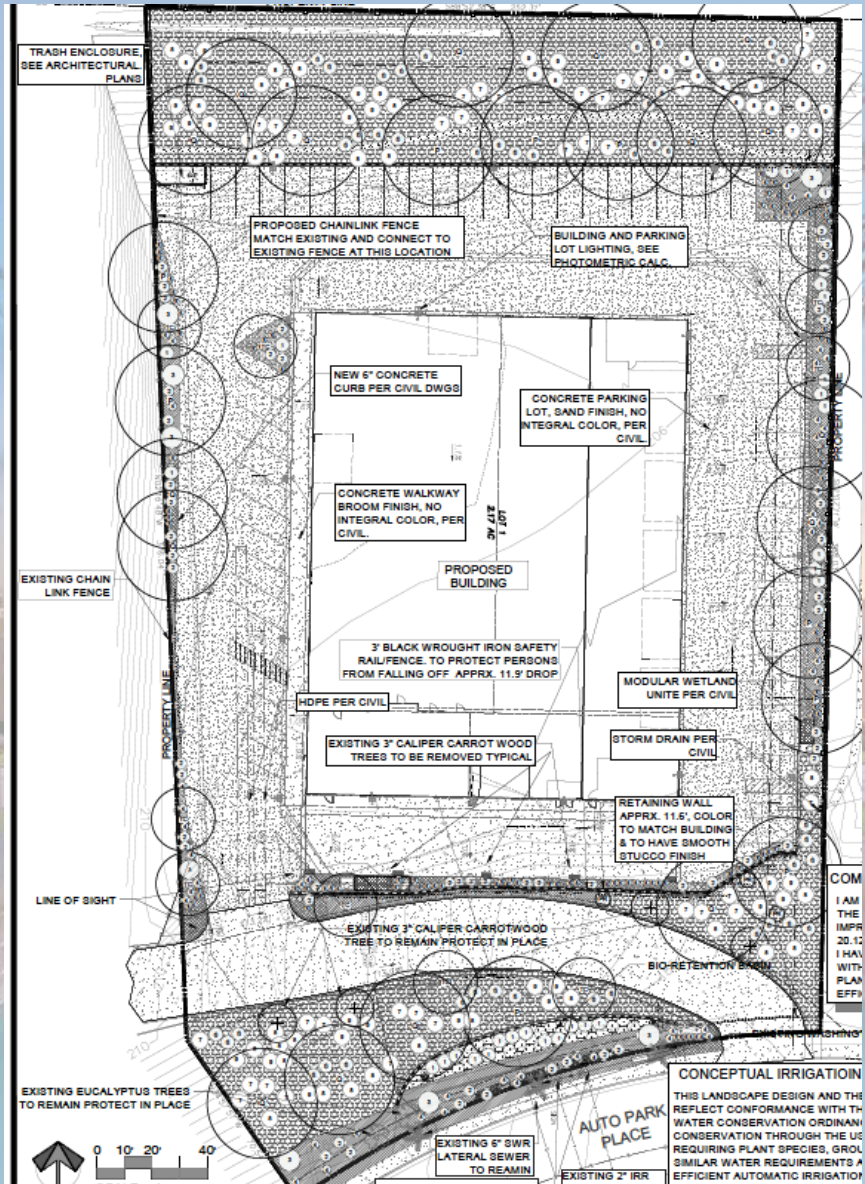
SCALE 1/8" = 1'-0"



NORTH ELEVATION
SCALE 1/8" = 1'-0"



EAST ELEVATION
SCALE 1/8" = 1'-0"



LANDSCAPE PLAN

CONCLUSION

Staff recommends that City Council uphold the Planning Commission decision and approve the resolution for Design Review Permit DR19-0025 subject to the conditions in the Resolution.