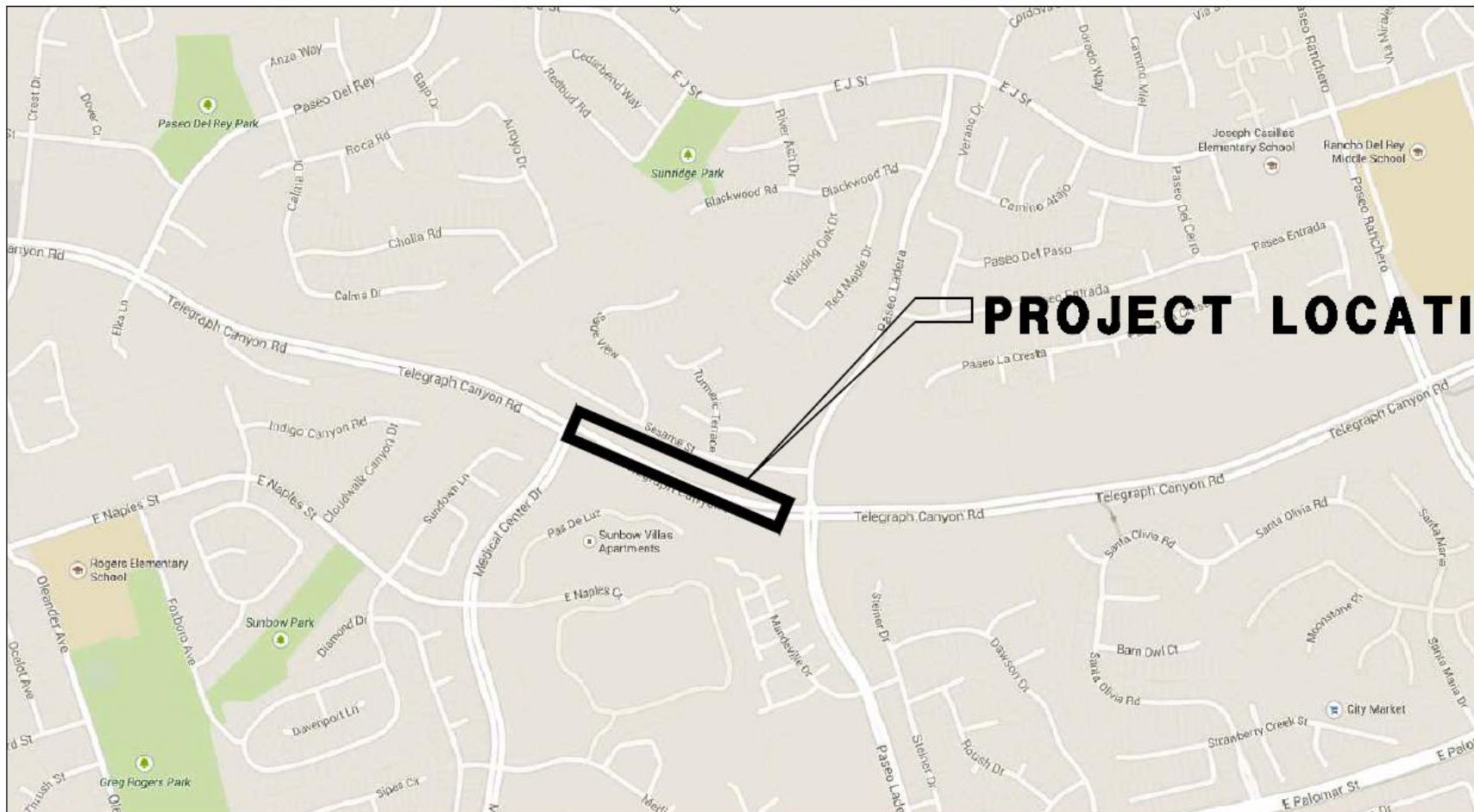


A photograph of a hillside with a wooden fence and a road, overlaid with text. The background shows a grassy hillside with a wooden fence running across it. In the foreground, there are bare, tangled branches and a tree trunk. The text is overlaid on a semi-transparent white box.

The Telegraph Canyon Road Erosion Protection Project

West of Paseo Ladera
Chula Vista CA

The Telegraph Canyon Road Erosion Protection Project



VICINITY MAP

SCALE: NTS



The Telegraph Canyon Road Erosion Protection Project

Channel sides have eroded dangerously close to right of way (with in 5 feet) at a depth varying from 7 to 12 feet





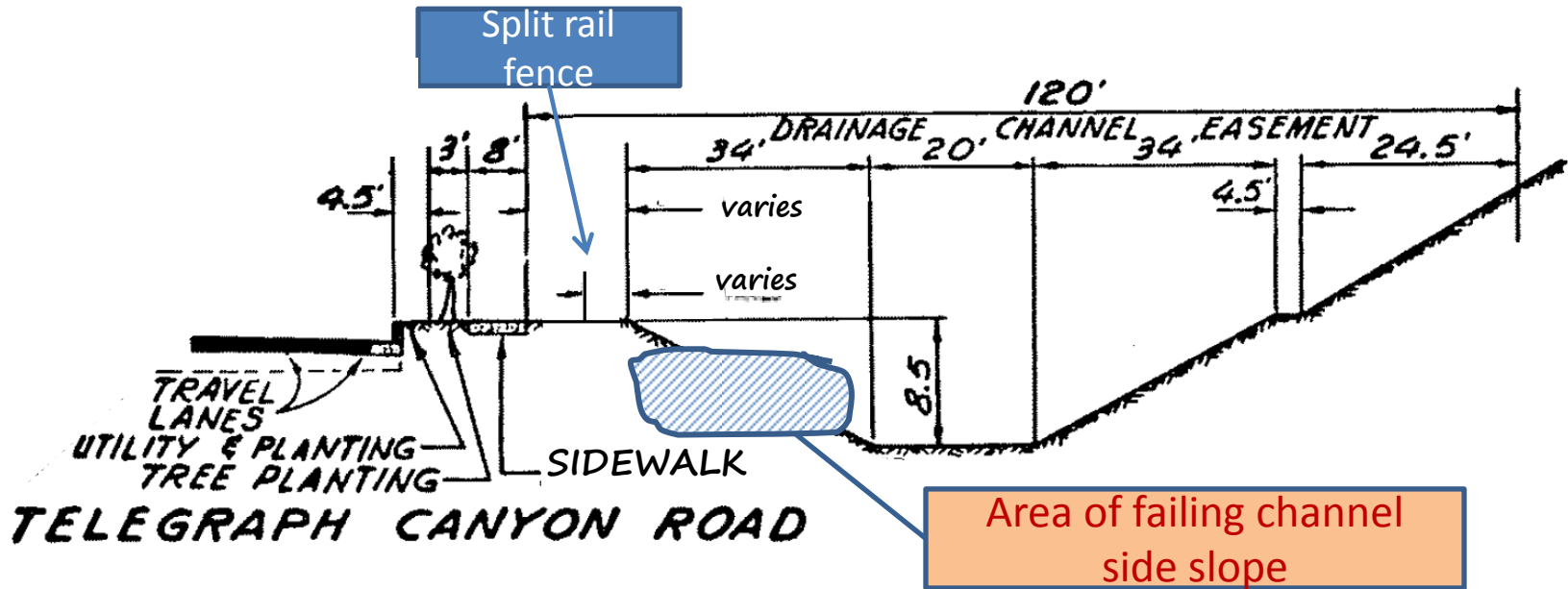




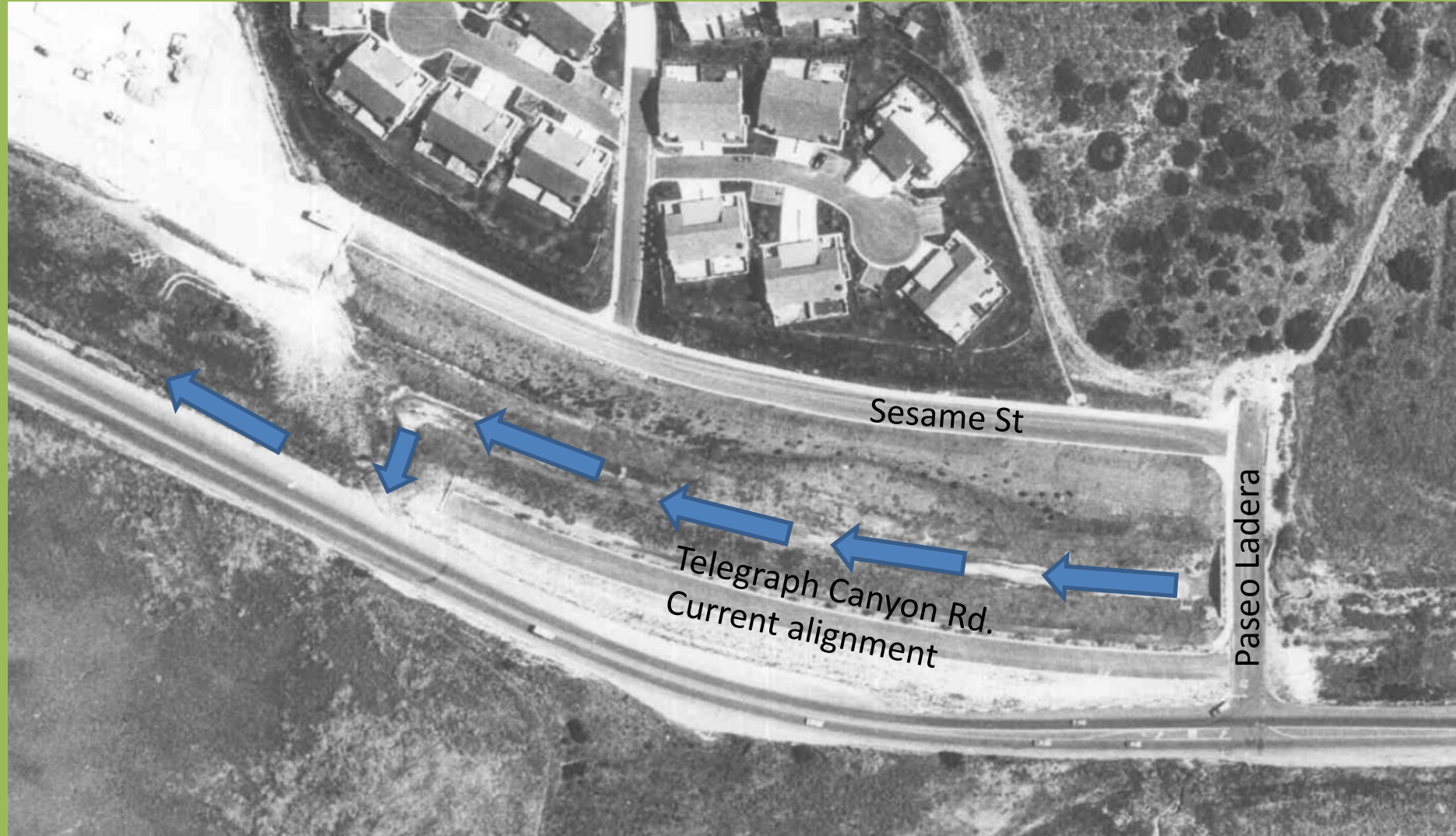


- This section of the Telegraph Canyon Channel was built in the late 70's.
- Designed to convey 3,500 cubic feet of water per second.
- Adjacent to Telegraph Canyon Road (6 Lane Major) averaging about 55,000 daily vehicles.
- Flows year round due to upstream irrigation.
- Original design was a grass lined trapezoidal open channel.

Original Design



1978



The Telegraph Canyon Channel

What caused the erosion?

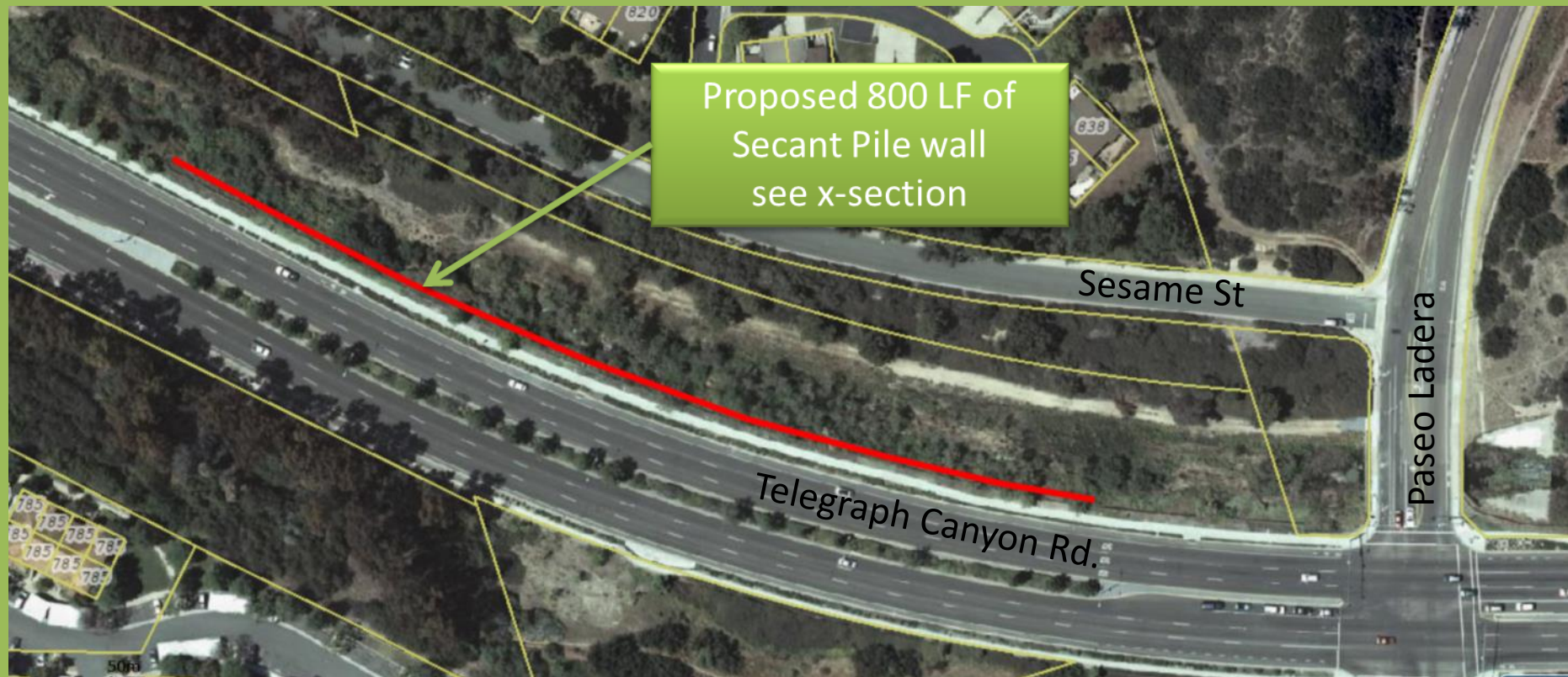
- Curving alignment redirecting flow.
- Original channel alignment is under westbound lanes of Telegraph Canyon Road.
- Year round flows produced dense vegetation.

The Telegraph Canyon Road Erosion Protection Project

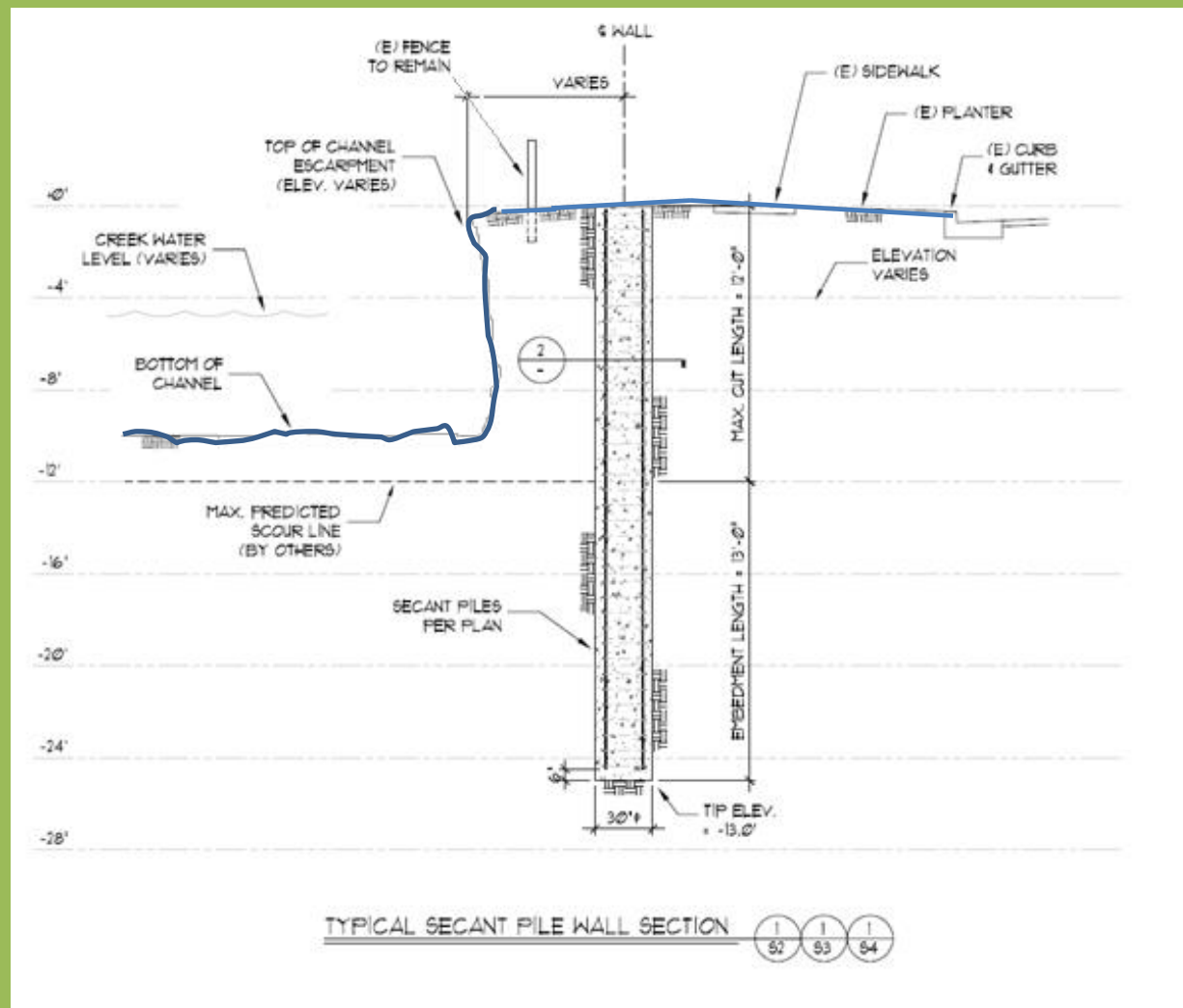
Proposed Solutions:

- **Armoring channel** – Concrete lined or Rip-Rap. Has greater environmental impacts, significantly longer timeline to develop and more costly.
- **Buried Secant Pile Wall** – Sub surface, cast in place, concrete pile retaining wall. No visual impacts, no intrusion into the channel, and short time frame to construct. Recommended by Geotechnical and Civil Engineer (City's consultants) and City Engineer.

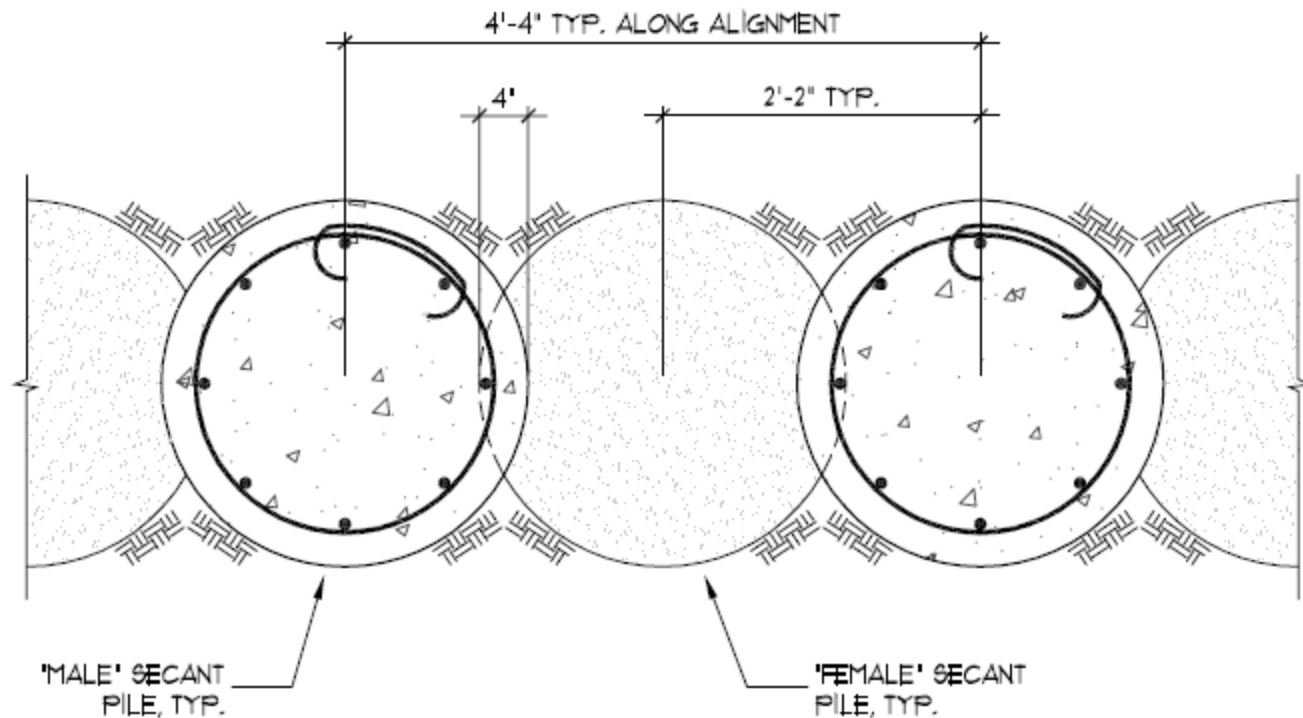
The Telegraph Canyon Road Erosion Protection Project



The Telegraph Canyon Road Erosion Protection Project



The Telegraph Canyon Road Erosion Protection Project



SECANT PILE LAYOUT

2
-

The Telegraph Canyon Road Erosion Protection Project

Staff's Recommendation:

Council Adopt the Resolutions

Questions ?