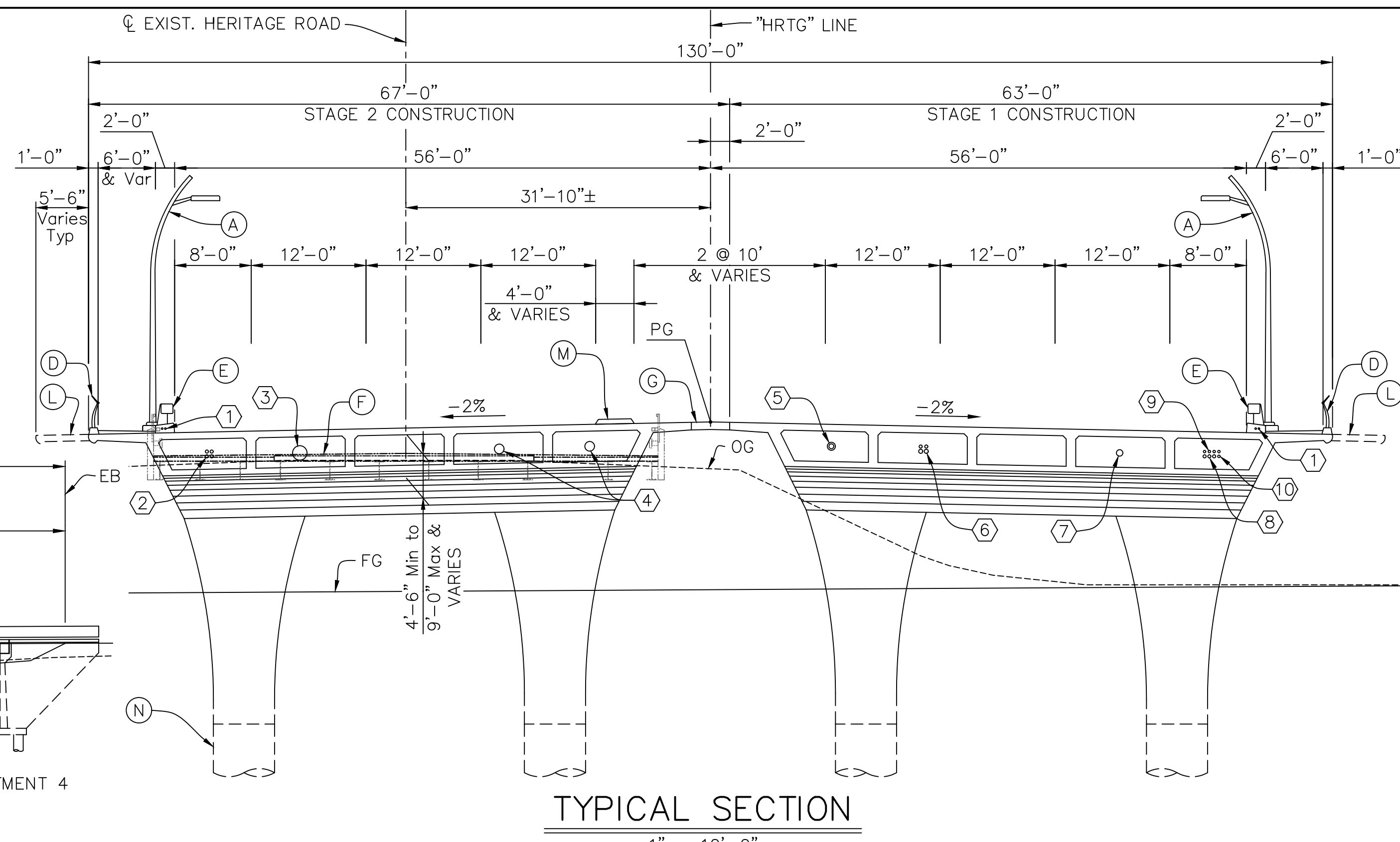
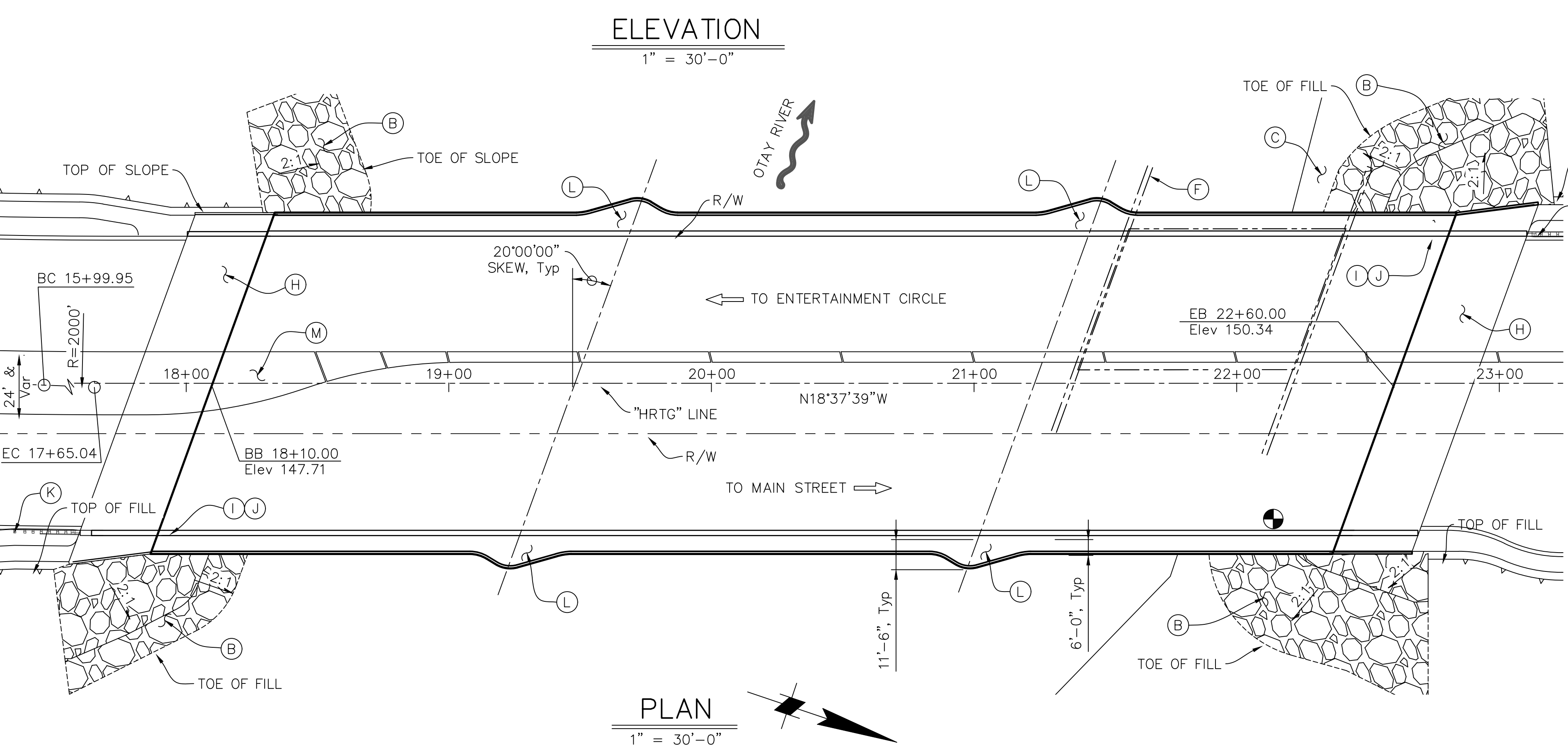
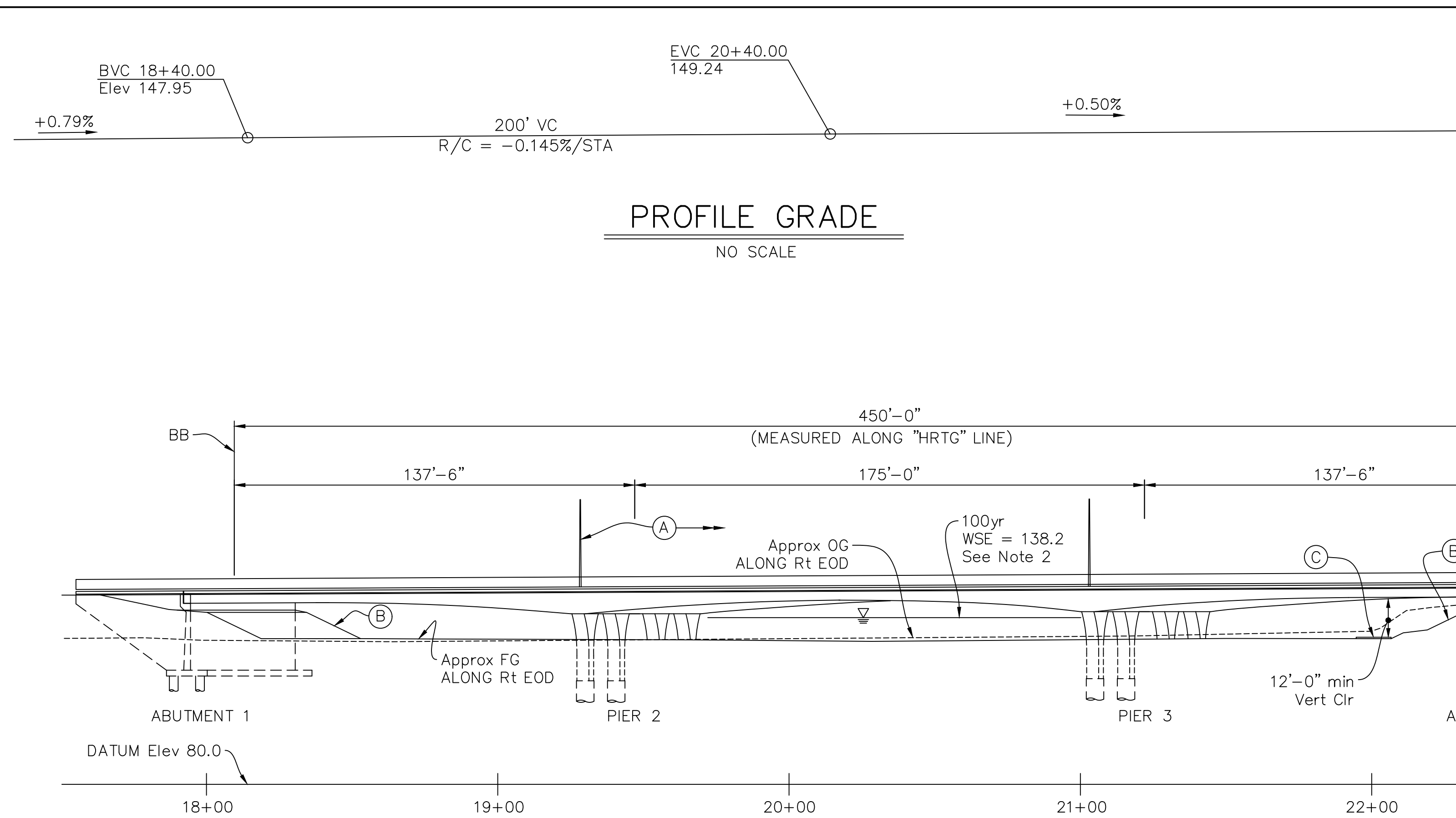


REVISION BY / DATE
 APPD / DATE
 REFERENCES DIM. NO.:
 DESIGNED BY: DRAWN BY: CHECKED BY:
 SCALE HORIZONTAL: AS SHOWN VERTICAL: AS SHOWN
 DATUM HORIZONTAL: CCS 83 ZONE 6, EPOCH 1991.35 VERTICAL: NAVD83
 G:\S017652 - Heritage Rd Bridge 17 Design\STRUCTURES\BRIDGE-STRUCTURES\7652000-a-01.dwg
 PLOT DATE: 12/29/2019 09:53:03 AM
 PLOT BY: JAR, JAM



LEGEND:

- ➔ Direction of traffic
- ➔ Direction of flow
- Existing structure
- ⊙ Minimum Vertical Clearance
- (A) Electrolier, see "ELECTRICAL PLANS"
- (B) Rock Slope Protection, see "ROADWAY PLANS"
- (C) Future Multi-purpose/Equestrian Trail, see "ROADWAY PLANS"
- (D) Pedestrian Railing
- (E) Concrete Barrier Type 85
- (F) Existing Bridge No. 57C-0670, to be removed Closure Pour
- (H) Structure Approach Slab Type N (30S)
- (I) Paint "HERITAGE ROAD BRIDGE"
- (J) Paint "57C-XXXX" and year built
- (K) MGS, see "ROADWAY PLANS"
- (L) Overlook
- (M) Raised Median
- (N) 6' ⌀ CIDH Pile

UTILITIES:

- (1) 2" dia Conduits for Lighting
- (2) 4-4" dia Conduits (City of Chula Vista)
- (3) 18" dia Future utility opening (City of Chula Vista)
- (4) 2-12" potable water (Otay Water District)
- (5) 6" gas in 10" steel casing (SDG&E)
- (6) 2-5" dia and 2-4" dia conduits for electrical (SDG&E)
- (7) 8" Reclaimed water (Otay Water District)
- (8) 3-4" dia Conduits for telecom (AT&T)
- (9) 3-3" dia Conduits for telecom (COX)
- (10) 2-3" dia Conduits for telecom (Media 3)

CURVE DATA:

- R = 2000.00'
- Δ = 4°43'46"
- T = 82.59'
- L = 165.09'

NOTES:

1. For "GENERAL NOTES" and "INDEX TO BRIDGE PLANS", see "DECK CONTOURS" sheet
2. For "PILE DATA TABLE", "SPREAD FOOTING DATA TABLE", "HYDROLOGIC SUMMARY TABLE", and "SCOUR DATA TABLE", see "FOUNDATION PLAN"
3. The Contractor shall verify all controlling field Dimensions before ordering or fabricating material

NOTE:
 LOAD AND RESISTANCE FACTOR DESIGN LIVE LOADING:
 HL-93 with "Low Boy" and Permit Design Vehicle

DECLARATION OF RESPONSIBLE CHARGE:

I hereby declare that I am the Engineer of Work for the Bridge Plans (sheets S-101 to S-125), that I have exercised responsible charge over the design of the bridge (except for geotechnical investigations, design, and recommendations) as defined in Section 6703 of the Business and Professions Code, and the bridge design is consistent with current standards.



Jared A. Cole R.C.E. 66188 Date

HERITAGE ROAD BRIDGE IMPROVEMENTS - STM386
HERITAGE ROAD BRIDGE OVER OTAY RIVER REPLACE
 GENERAL PLAN

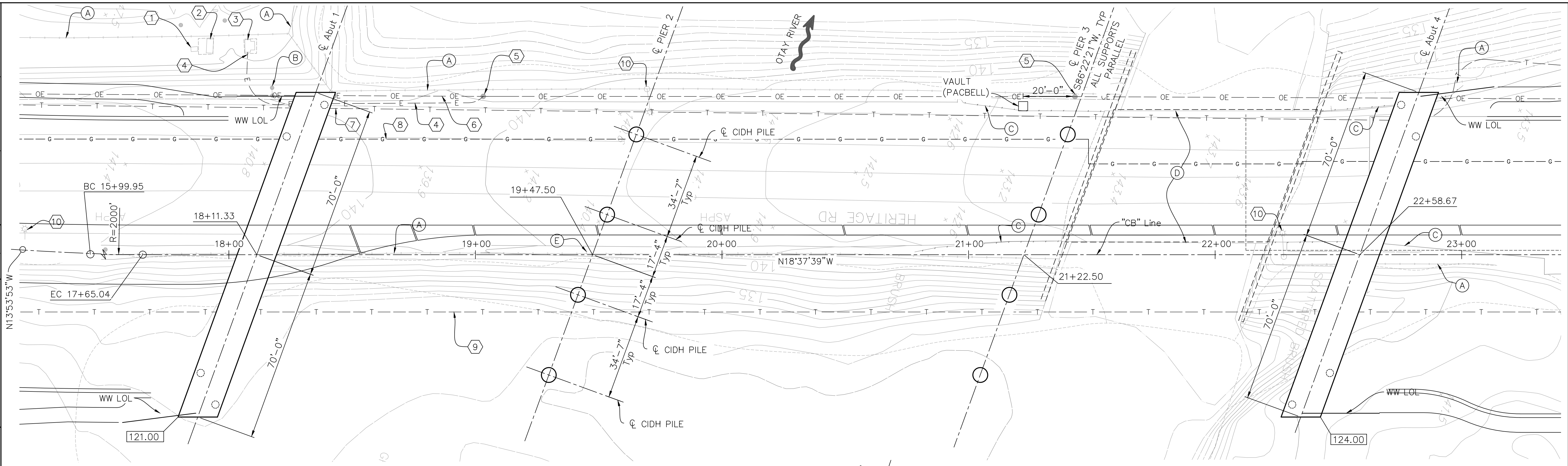
UTILITY NOTE: ALL EXISTING UTILITIES SHOWN ON THESE PLANS ARE PLOTTED FROM RECORD DATA AT THEIR APPROXIMATE LOCATIONS. UNDERGROUND FACILITIES MAY EXIST WHICH HAVE NOT BEEN REPORTED OR ARE NOT OF RECORD. CONTRACTOR SHALL VERIFY THE LOCATION OF ALL PERTINENT UTILITIES IN THE FIELD PRIOR TO THE START OF CONSTRUCTION.		CITY OF CHULA VISTA ENGINEERING AND CAPITAL PROJECTS 276 FOURTH AVENUE CHULA VISTA, CA 91910 WWW.CHULAVISTA.CA.GOV	SUBSET SHEET ID: S-01
RESPONSIBLE CHARGE OF WORK: DATE:	APPROVED BY: DATE: JOSE LUIS GOMEZ P.E. P.L.S. PRINCIPAL CIVIL ENGINEER		

CONSTRUCTION RECORD		AS-BUILT	
CONTRACTOR:	SIGNED:	DATE:	DISCIPLINE:
INSPECTOR:	PRINTED NAME:	R.C.E. NO.:	EXPIRATION:
DATE COMPLETED:			

moffatt & nichol
 1660 Hotel Circle North, Ste. 500
 San Diego, Ca. 92108

60% PROGRESS SET - NOVEMBER 2019

REVISION 1. BY / DATE
 APPD / DATE
 REFERENCES DWG. NO.:
 DESIGNED BY:
 DRAWN BY:
 CHECKED BY:
 SCALE: AS SHOWN
 HORIZONTAL: AS SHOWN
 VERTICAL: AS SHOWN
 DATUM: 1988 NAVD88
 HORIZONTAL: CCS 83 ZONE 6, EPOCH 1991.35
 VERTICAL: NAVD88
 G:\SO\17652 - Heritage Rd Bridge 17 Design Structures\17652005-e-17652.dwg
 PLOT DATE: 11/29/2018 4:39 AM
 PLOT BY: MARIN, YAK



PLAN
 1" = 20'-0"

LEGEND:

- XX.XX Bottom of Footing elevation
- Direction of flow
- CIDH pile, not all piles shown
- (A) Exist fence, see Roadway Plans
- (B) Exist sign, to be relocated, see Roadway Plans
- (C) Exist metal beam guard railing, to be removed
- (D) Exist bridge to be removed, see Note 1
- (E) Exist sign, to be removed

NOTES:

1. Existing bridge foundations not shown.
2. For limits of excavation and backfill, see "DECK CONTOURS" sheet and A62C.

BASIS OF BEARINGS:

"The Basis of Coordinates for this survey is the North American Datum of 1983 (NAD 83) California State Plane Coordinate System of 1983 (CCS83) Zone 6 (Epoch 1991.35) based locally upon the following control points per the City of Chula Vista survey control network as determined by record of survey 14841."

STATION	NORTHING	EASTING
1355	1798506.190	6321589.860
1356	1798384.884	6325239.590
1359	1797783.898	6336676.427

BENCHMARK:

Elevations shown hereon are in terms of the North American Vertical Datum of 1988 (NAVD88) based locally upon the following benchmarks per the City of Chula Vista survey control network.

BENCHMARK	ELEVATION
CV BM 1355	191.640
CV BM 1356	242.385

NOTE:

The Contractor shall verify all controlling field Dimensions before ordering or fabricating material.

EXISTING UTILITIES

Label	Existing Utility	Owner	Disposition
①	Utility Vault	2000 HERITAGE ROAD	Protected in place
②	Utility Cabinet	2000 HERITAGE ROAD	Protected in place
③	Utility Cabinet	SDG&E	Protected in place
④	Electrical (Underground)	SDG&E	To be relocated, by others
⑤	Power Pole	SDG&E	To be removed, by others
⑥	Electrical (Overhead)	SDG&E	To be relocated, by others
⑦	Telephone (Overhead)	AT&T	To be relocated, by others
⑧	6" Gas	SDG&E	To be relocated, by others
⑨	Telephone (Abandoned)	AT&T	To be removed, by others
⑩	Electrolier	CITY of CHULA VISTA	To be salvaged

NOTE: See "ROADWAY PLANS" for additional utility information

HYDROLOGIC SUMMARY TABLE

	Design Flood	Base Flood	Record Flood	Overtopping Flood
Frequency (years)	50	100	N/A	630
Discharge cubic ft/sec	15,000	22,000	N/A	58,000
Water surface elevation at bridge	135.7	138.2	N/A	146.4

NOTE: Flood plain data are based upon information when the plans were prepared. The accuracy of said information is not warranted by the City of Chula Vista, or Moffatt & Nichol and interested or affected parties should make their own investigations.

SCOUR DATA TABLE

Support No.	Long Term (Degradation and Contraction) Scour Elevation (ft)	Short Term (Local) Scour Depth (ft) (Elevation*)
Abut 1	N/A	N/A (Elevation 121*)
Pier 2	123	9 (Elevation 116*)
Pier 3	123	9 (Elevation 122*)
Abut 4	N/A	N/A (Elevation 124*)

* Scour Elevation with Geotechnical Considerations.

PILE DATA TABLE

Location	Pile Type	Nominal Resistance		Pile Cut-Off Elevation (ft)	Design Tip Elevation (ft)	Specified Tip Elevation (ft)
		Compression (kips)	Tension (kips)			
Abut 1	36" ø CIDH	TBD	TBD	118.25	TBD	TBD
Pier 2	72" ø CIDH	TBD	TBD	122.00	TBD	TBD
Pier 3	72" ø CIDH	TBD	TBD	122.00	TBD	TBD
Abut 4	36" ø CIDH	TBD	TBD	118.25	TBD	TBD

- NOTES:
1. Design tip elevations are controlled by the following demands:
(a) Compression, (b) Tension, (c) Settlement, and (d) Lateral Load.
 2. There are no design tip elevations for Tension at Abutments.
 3. The specified tip elevations shall not be raised above the design tip elevations for TBD.

**HERITAGE ROAD BRIDGE IMPROVEMENTS - STM386
HERITAGE ROAD BRIDGE OVER OTAY RIVER REPLACE**

FOUNDATION PLAN

UTILITY NOTE: ALL EXISTING UTILITIES SHOWN ON THESE PLANS ARE PLOTTED FROM RECORD DATA AT THEIR APPROXIMATE LOCATIONS. UNDERGROUND FACILITIES MAY EXIST WHICH HAVE NOT BEEN REPORTED OR ARE NOT OF RECORD. CONTRACTOR SHALL VERIFY THE LOCATION OF ALL PERTINENT UTILITIES IN THE FIELD PRIOR TO THE START OF CONSTRUCTION.



CITY OF CHULA VISTA
 ENGINEERING AND CAPITAL PROJECTS
 276 FOURTH AVENUE
 CHULA VISTA, CA 91910
 WWW.CHULAVISTA.CA.GOV

SUBSET SHEET ID: S-07

RESPONSIBLE CHARGE OF WORK: DATE:	APPROVED BY: DATE:	DRAWING NO. 17044-S
	JOSE LUIS GOMEZ P.E. P.L.S. PRINCIPAL CIVIL ENGINEER	TOTAL SHEETS: TBD
	RCE	STM386

CONSTRUCTION RECORD	AS-BUILT		
CONTRACTOR:	SIGNED:	DATE:	DISCIPLINE:
INSPECTOR:	PRINTED NAME:	R.C.E. NO.:	EXPIRATION:
DATE COMPLETED:			

moffatt & nichol
 1660 Hotel Circle North, Ste. 500
 San Diego, Ca. 92108

60% PROGRESS SET - NOVEMBER 2019