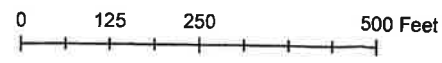
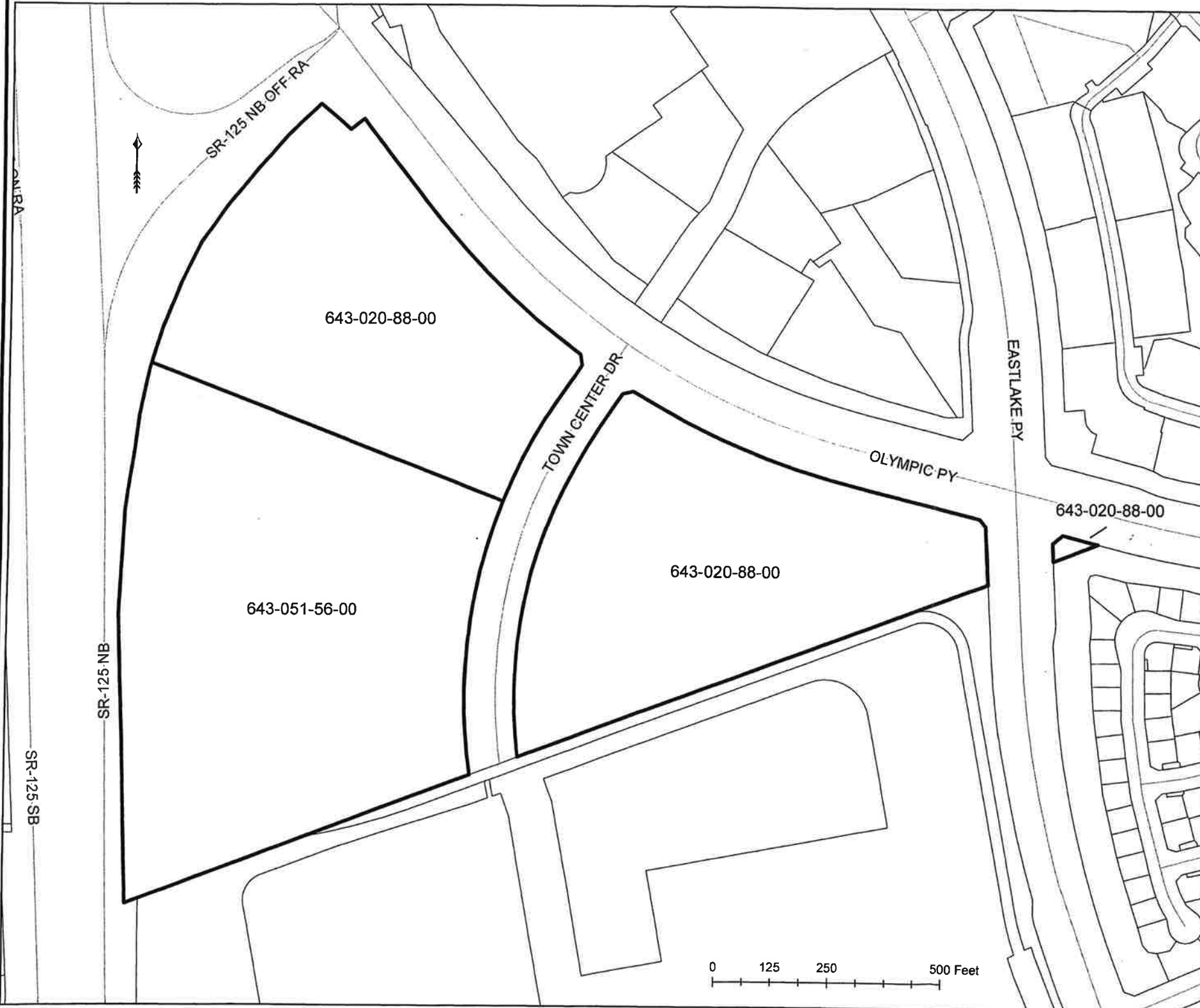


**PROPOSED BOUNDARIES OF  
COMMUNITY FACILITIES DISTRICT NO. 19M  
(FREEWAY COMMERCIAL 2)**

CITY OF CHULA VISTA  
COUNTY OF SAN DIEGO  
STATE OF CALIFORNIA



FILED IN THE OFFICE OF THE CITY CLERK OF THE CITY OF CHULA VISTA THIS 11<sup>th</sup> DAY OF April, 2017.

*[Signature]*  
CITY CLERK  
CITY OF CHULA VISTA  
SAN DIEGO COUNTY, CALIFORNIA



I HEREBY CERTIFY THAT THE WITHIN MAP SHOWING PROPOSED BOUNDARIES OF COMMUNITY FACILITIES DISTRICT NO. 19M (FREEWAY COMMERCIAL 2), CITY OF CHULA VISTA, COUNTY OF SAN DIEGO, STATE OF CALIFORNIA, WAS APPROVED BY THE CITY COUNCIL OF THE CITY OF CHULA VISTA, AT A REGULAR MEETING THEREOF, HELD ON THE 11<sup>th</sup> DAY OF April, 2017, BY ITS RESOLUTION NO. 2017-050.

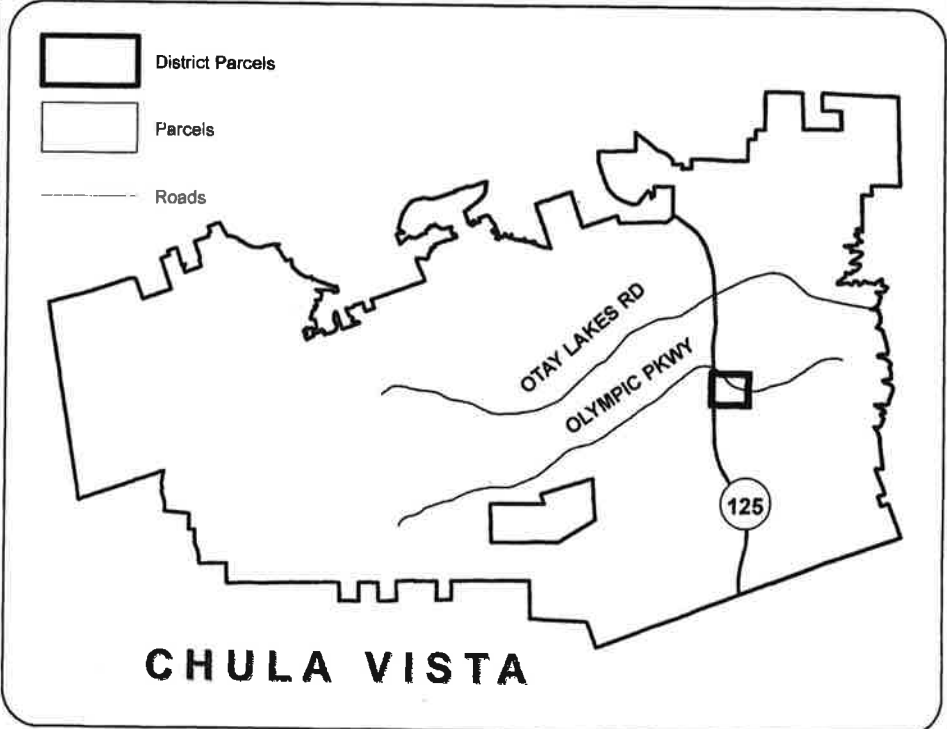
*[Signature]*  
CITY CLERK  
CITY OF CHULA VISTA  
SAN DIEGO COUNTY, CALIFORNIA



FILED THIS 18<sup>th</sup> DAY OF APRIL, 2017, AT THE HOUR OF 11:17 O'CLOCK A.M. IN BOOK 46 OF MAPS OF ASSESSMENT AND COMMUNITY FACILITIES DISTRICTS AT PAGE 55, IN THE OFFICE OF THE COUNTY RECORDER IN THE COUNTY OF SAN DIEGO, STATE OF CALIFORNIA.

*[Signature]*  
ERNEST J. DRONENBURG, JR.  
COUNTY RECORDER  
SAN DIEGO COUNTY, CALIFORNIA

FOR PARTICULARS OF THE LINES AND DIMENSIONS OF ASSESSOR PARCELS, REFERENCE IS MADE TO THE MAPS OF THE ASSESSOR, COUNTY OF SAN DIEGO, STATE OF CALIFORNIA.



Source: San Diego County GIS  
Geographic Coordinate Reference: GCS North American 1983  
Projection: NAD 1983 StatePlane California VI FIPS 0406 Feet



**BK 46 PG 55**

**2017-7000138**

**2017-7000138**

**BK 46 PG 55**