

CITY OF CHULA VISTA

DEVELOPMENT SERVICES DEPARTMENT / ENGINEERING & CAPITAL PROJECTS DEPARTMENT

ADJUSTMENT PLAT NO. LA20-0003

SHEET 2 OF 3

----- INDICATES EXISTING LOT LINE TO BE ADJUSTED

———— INDICATES NEW LOT LINE

△ INDICATES EXISTING LANDFILL NUISANCE EASEMENT TO OTAY LANDFILL RECORDED MARCH 17, 1997 AS INST. NO. 1997-0118929, O.R.

△ INDICATES EXISTING IRREVOCABLE OFFER OF DEDICATION OF FEE INTEREST OVER LOT A PER MAP 16203

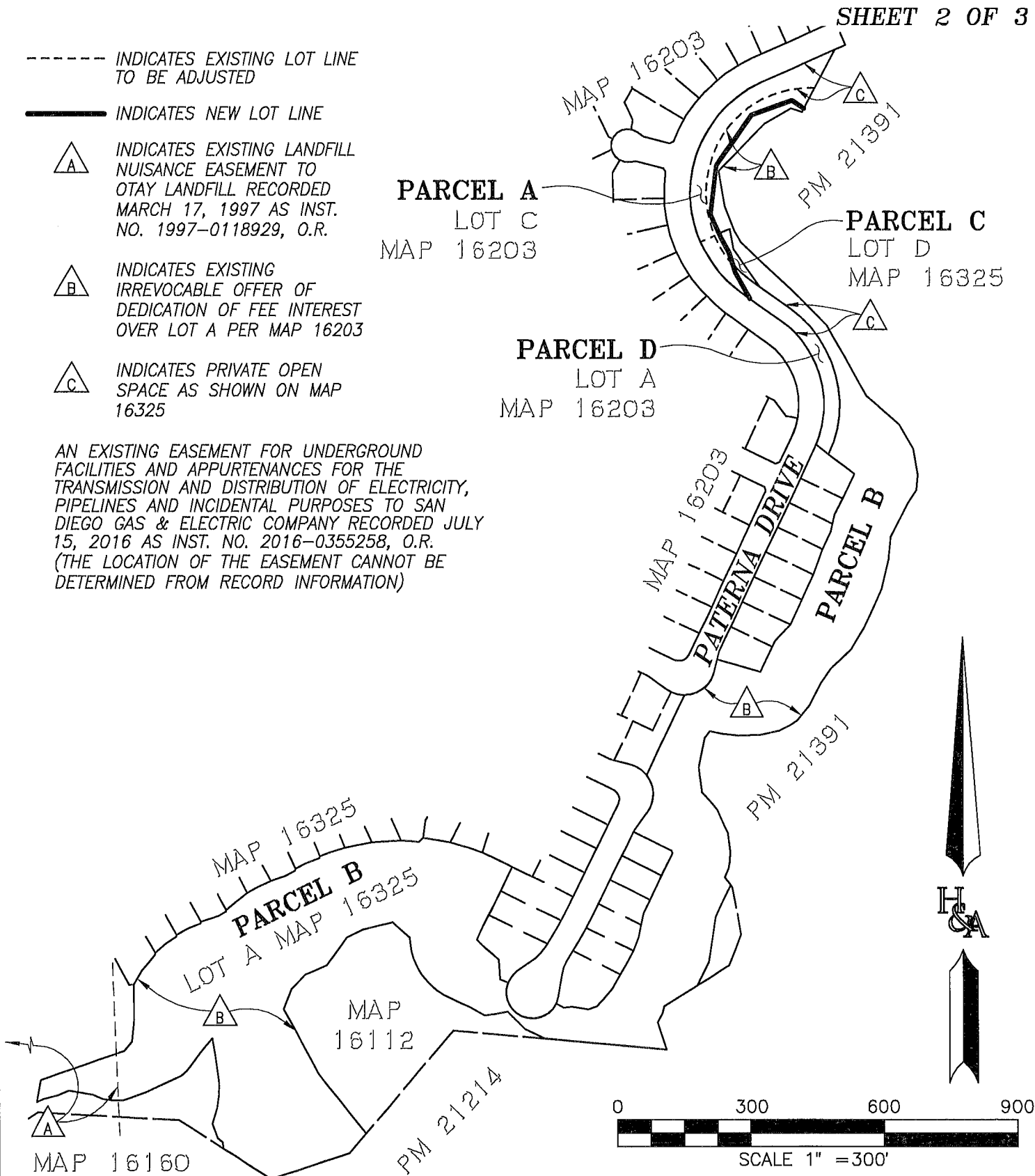
△ INDICATES PRIVATE OPEN SPACE AS SHOWN ON MAP 16325

AN EXISTING EASEMENT FOR UNDERGROUND FACILITIES AND APPURTENANCES FOR THE TRANSMISSION AND DISTRIBUTION OF ELECTRICITY, PIPELINES AND INCIDENTAL PURPOSES TO SAN DIEGO GAS & ELECTRIC COMPANY RECORDED JULY 15, 2016 AS INST. NO. 2016-0355258, O.R. (THE LOCATION OF THE EASEMENT CANNOT BE DETERMINED FROM RECORD INFORMATION)

PARCEL A
LOT C
MAP 16203

PARCEL C
LOT D
MAP 16325

PARCEL D
LOT A
MAP 16203



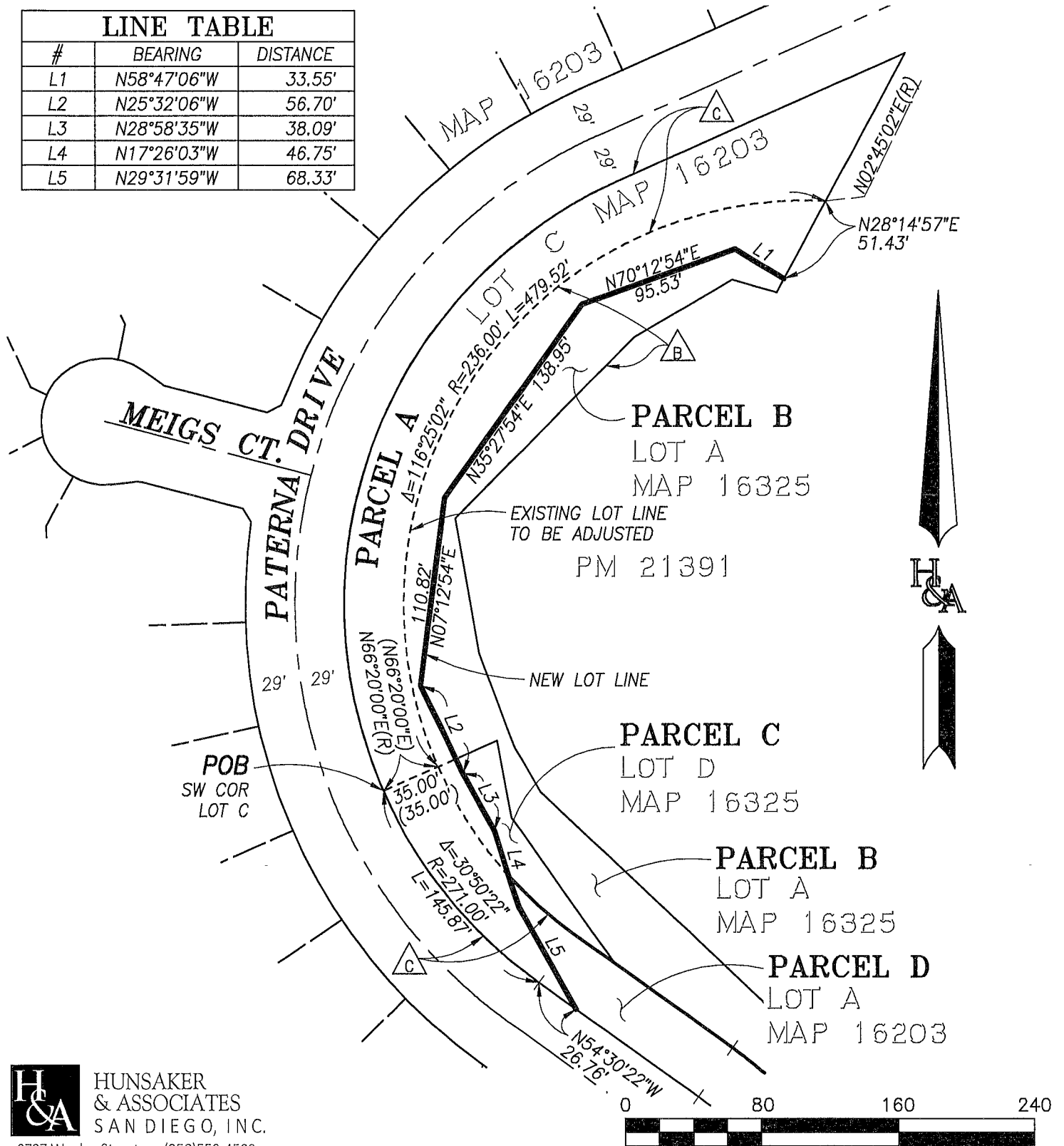
CITY OF CHULA VISTA

DEVELOPMENT SERVICES DEPARTMENT /
ENGINEERING & CAPITAL PROJECTS DEPARTMENT

ADJUSTMENT PLAT NO. LA20-0003

SHEET 3 OF 3

LINE TABLE		
#	BEARING	DISTANCE
L1	N58°47'06"W	33.55'
L2	N25°32'06"W	56.70'
L3	N28°58'35"W	38.09'
L4	N17°26'03"W	46.75'
L5	N29°31'59"W	68.33'



H & A HUNSAKER & ASSOCIATES
SAN DIEGO, INC.
9707 Waples Street (858)558-4500
San Diego, CA 92121

