



# COVID-19 Update

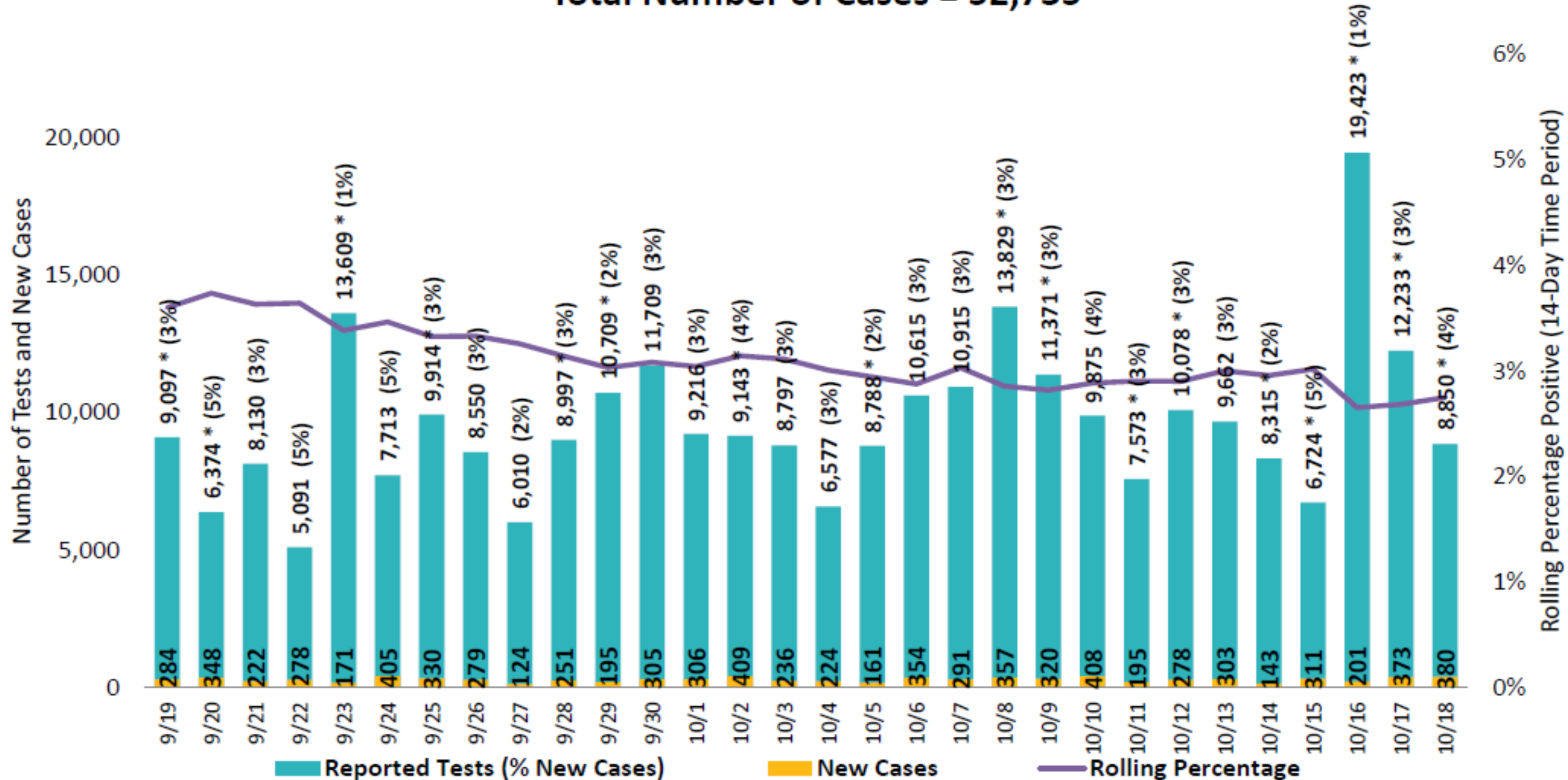
## 221 Days Since EOC Activation

October 20, 2020

# COVID-19 Percentage Positive



**Percentage of Positive COVID-19 Cases Among Tests by Date Reported**  
**Total Number of Cases = 52,735**



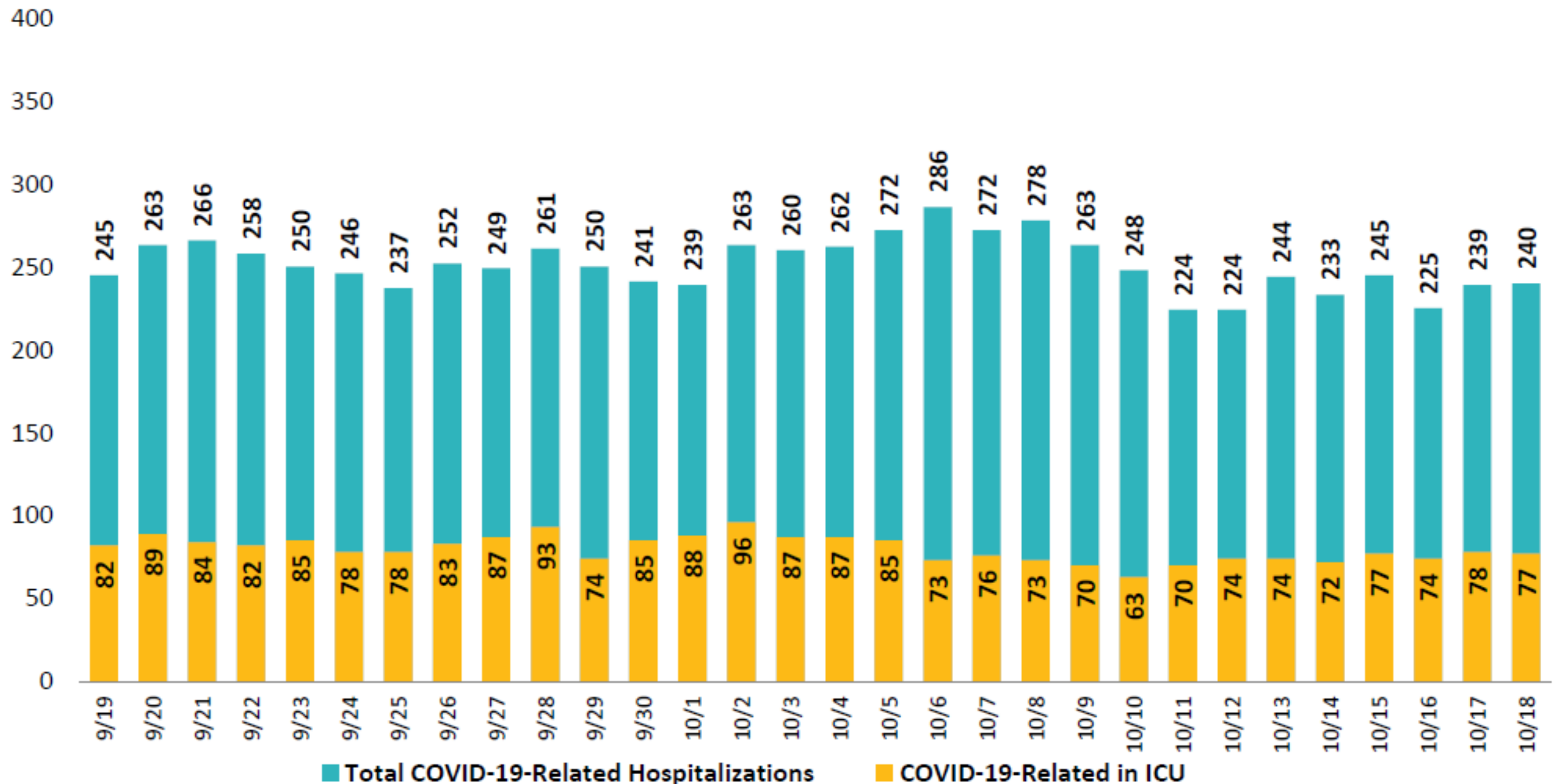
Data are preliminary and subject to change; numerator: cases among San Diego County residents; denominator: all tests including San Diego County residents and non-residents; \*received batch of prior tests; rolling average percentage for 14-day time period; total number of tests = 1,302,869; 10/18/2020 rolling average = 2.7%.

Prepared by County of San Diego, Emergency Operations Center, 10/19/2020

# COVID-19 Hospital Census



## COVID-19 Hospital Daily Census in San Diego County Includes Cases and Suspect COVID-19 Patients



Data are preliminary and subject to change; data from hospitals reporting directly to County of San Diego; census for San Diego County non-federal hospitals; includes cases and suspect COVID-19 patients for San Diego County residents and non-residents

Prepared by County of San Diego, Emergency Operations Center, 10/19/2020

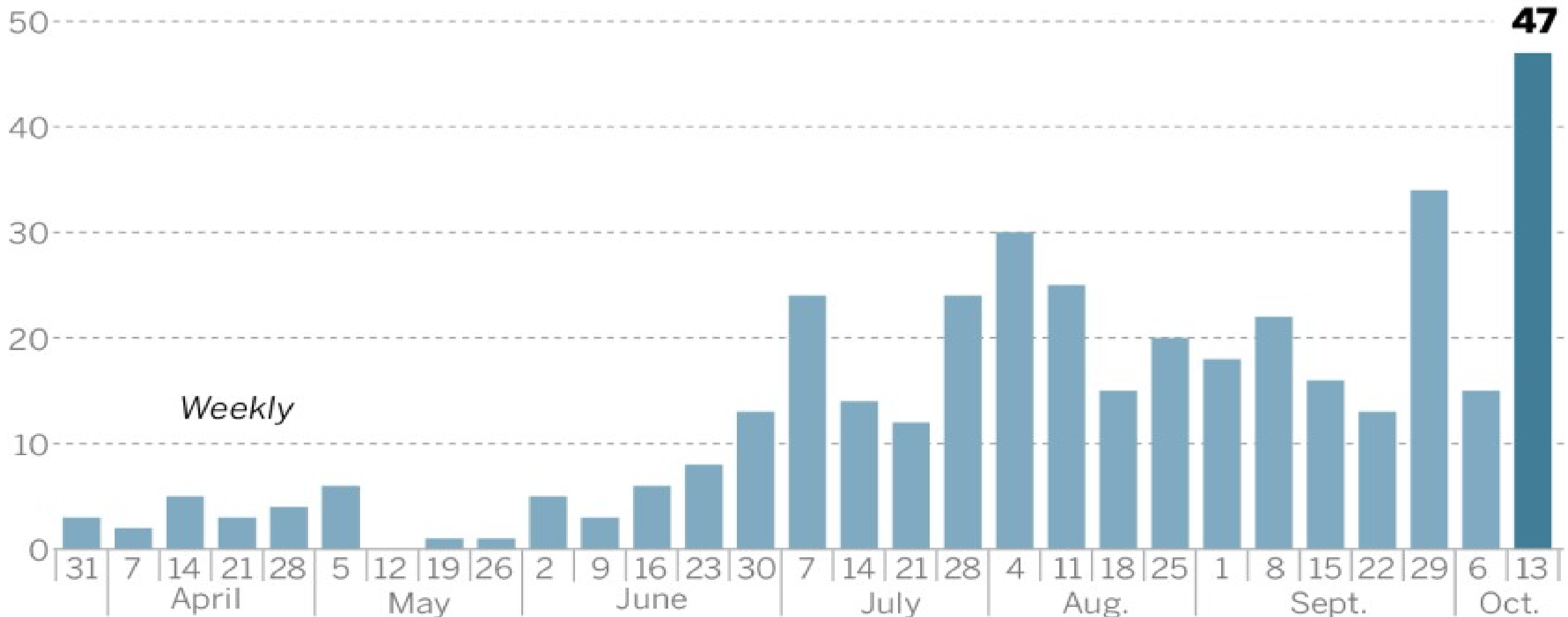


# Community Outbreaks

## COVID-19 community outbreaks

San Diego County confirmed 389 COVID-19 community outbreaks between March 25 and Oct. 13, linked to more than 2,694 cases. An outbreak is defined as three or more COVID-19 cases in a single setting within a 14-day period, provided that the cases involve people living in separate households.

### Outbreaks by week

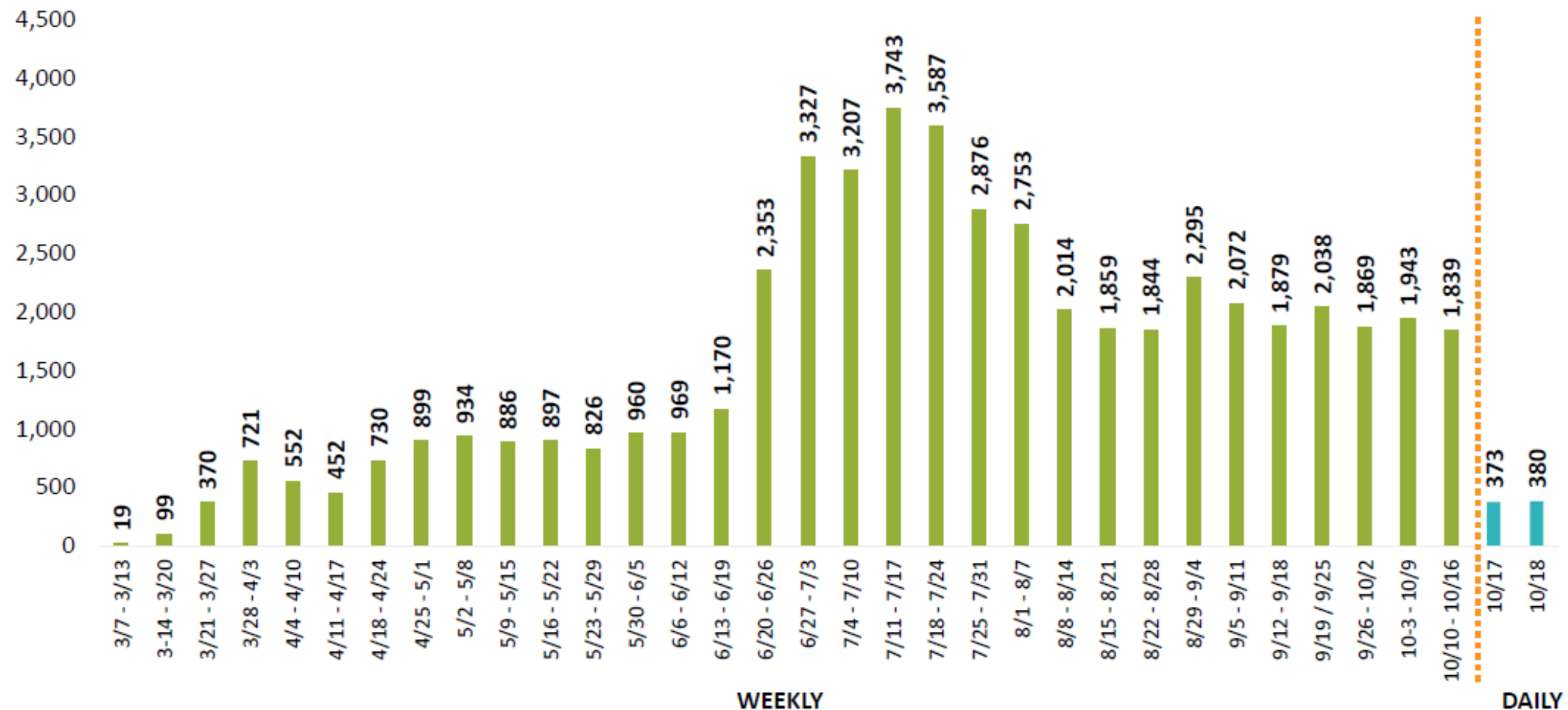




# COVID-19 Cases by Date Reported



## COVID-19 Cases Among San Diego County Residents New Cases by Date Reported Total Number of Cases = 52,735



Data are preliminary and subject to change; prior weeks by week reported (green bars)

Data available at: <https://sdgis-sandag.opendata.arcgis.com/>

Prepared by County of San Diego, Emergency Operations Center, 10/19/2020

# State Monitoring Metrics



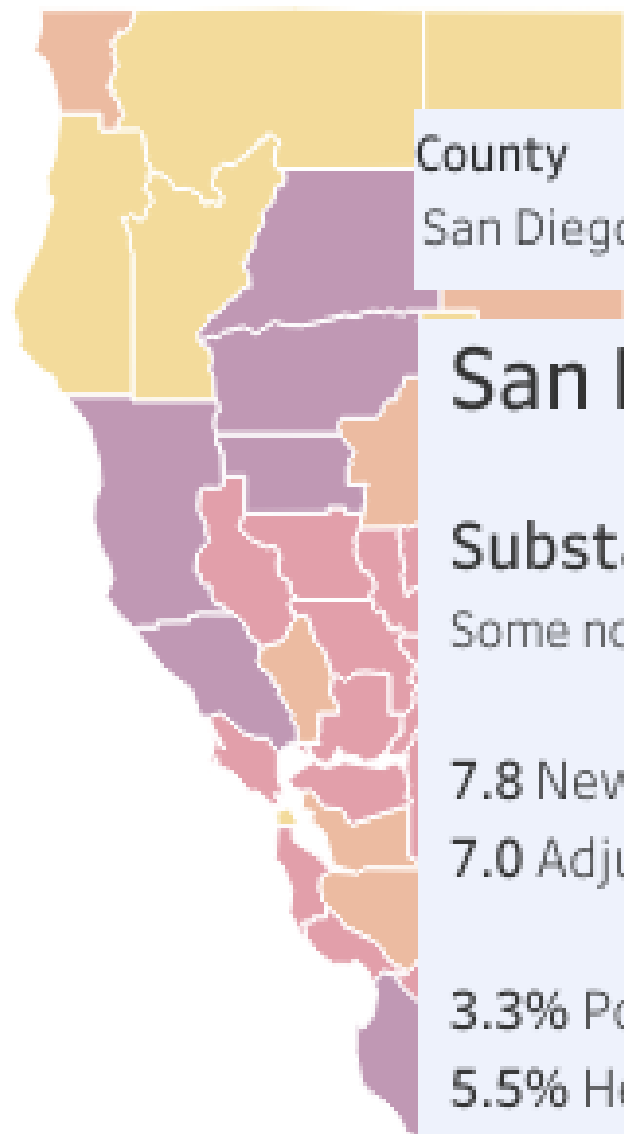
Currently in **Tier # 2 (Red)**

## Case Rate and Testing Positivity Percentage Thresholds

|                          | Dates of interest for analyses | Unadjusted case rate per 100,000 (7-day daily average with a 7-day lag) | Adjusted case rate per 100,000 (7-day daily average with a 7-day lag) | % Testing positivity (7-day average with a 7-day lag)* | Testing Rate per 100,000 (7-day average with a 7-day lag)* |
|--------------------------|--------------------------------|---|---|--|--|
| date updated: 9/22/2020  | 9/6 – 9/12                     | 6.8   | 6.9   | 3.8%*  | 210.5*   |
| date updated: 9/29/2020  | 9/13 - 9/19                    | 7.2   | 6.7   | 3.5%   | 258.0  |
| date updated: 10/6/2020  | 9/20 - 9/26                    | 7.0   | 6.5   | 3.5%   | 260.9  |
| date updated: 10/13/2020 | 9/27 – 10/3                    | 7.2   | 6.8   | 3.0%   | 273.5  |

| Tier       | Case Rate (per 100,000) | Testing Positivity Percentage |
|------------|-------------------------|-------------------------------|
| 1 (Purple) | >7.0                    | >8.0%                         |
| 2 (Red)    | 4.0-7.0                 | 5.0-8.0%                      |
| 3 (Orange) | 1.0-3.9                 | 2.0-4.9%                      |
| 4 (Yellow) | <1.0                    | <2.0%                         |

*Data are preliminary and subject to change; case rate from California Department of Public Health and calculated using California Department of Finance 2020 Projection Population Estimate for San Diego County to be 3,370,418; \*testing metrics calculated using San Diego County data Prepared by County of San Diego, Emergency Operations Center, 10/19/2020*



County  
San Diego

**San Diego County** Close

**Substantial\***  
Some non-essential indoor business operations are open with modifications

7.8 New COVID-19 cases per day per 100K  
7.0 Adjusted case rate for tier assignment

3.3% Positivity rate  
5.5% Health equity quartile positivity rate

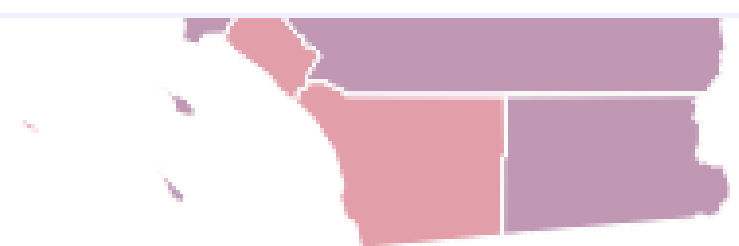
| 3 weeks prior<br>9/19 | 2 weeks prior<br>9/26 | 1 week prior<br>10/3 | Current<br>10/10 |
|-----------------------|-----------------------|----------------------|------------------|
| Substantial           | Substantial           | Substantial          | Substantial      |

\*See California Blueprint Data Chart for tier determination

Statewide metrics

7.0 New COVID-19 positive cases per day per 100K

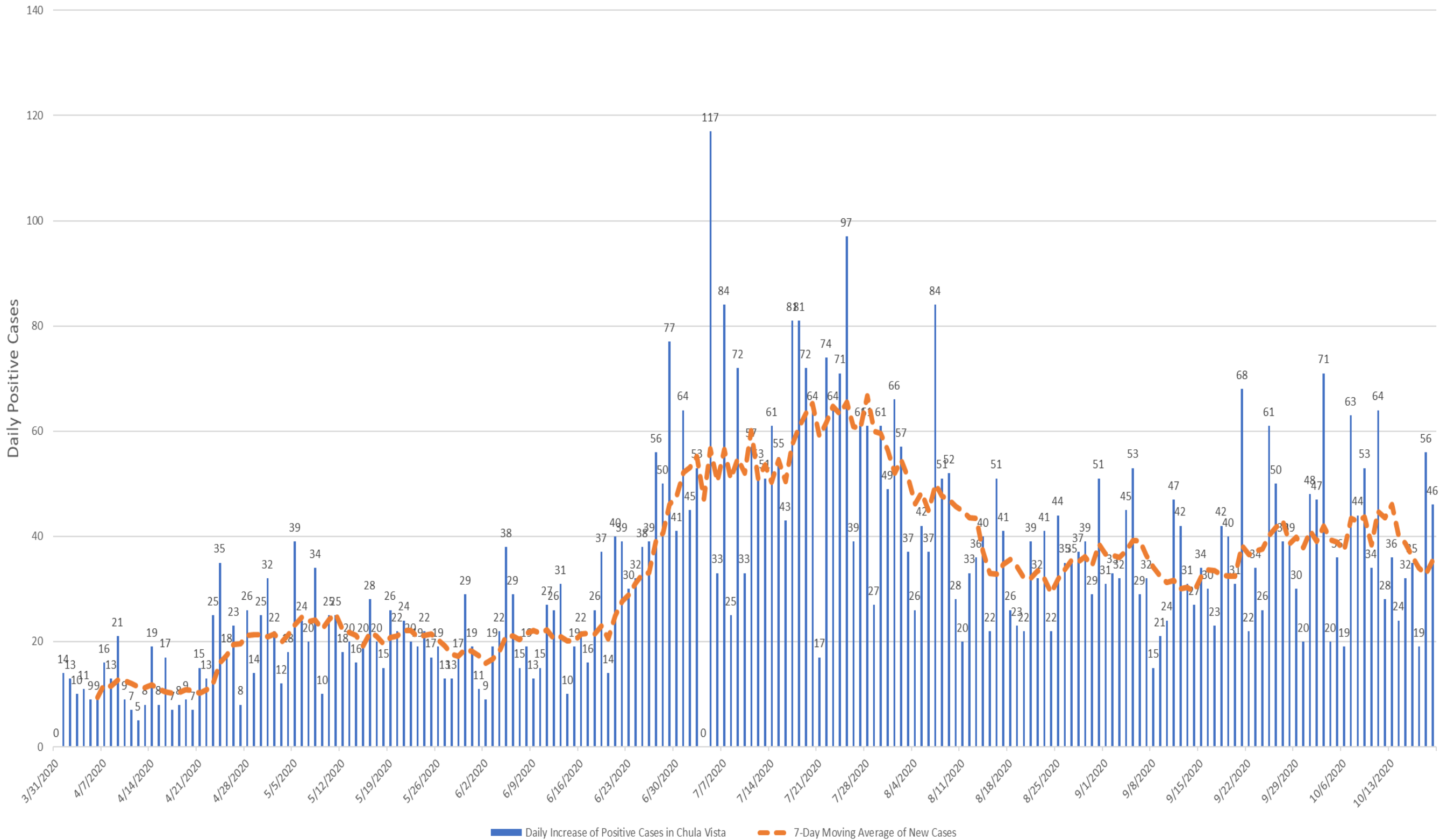
3.3% Positivity rate



- Widespread
- Substantial
- Moderate
- Minimal



# Daily New Cases in Chula Vista





# Tests Results by Zip Code

Data through 9/26/2020, updated 9/30/2020

Data through 10/3/2020, updated 10/7/2020

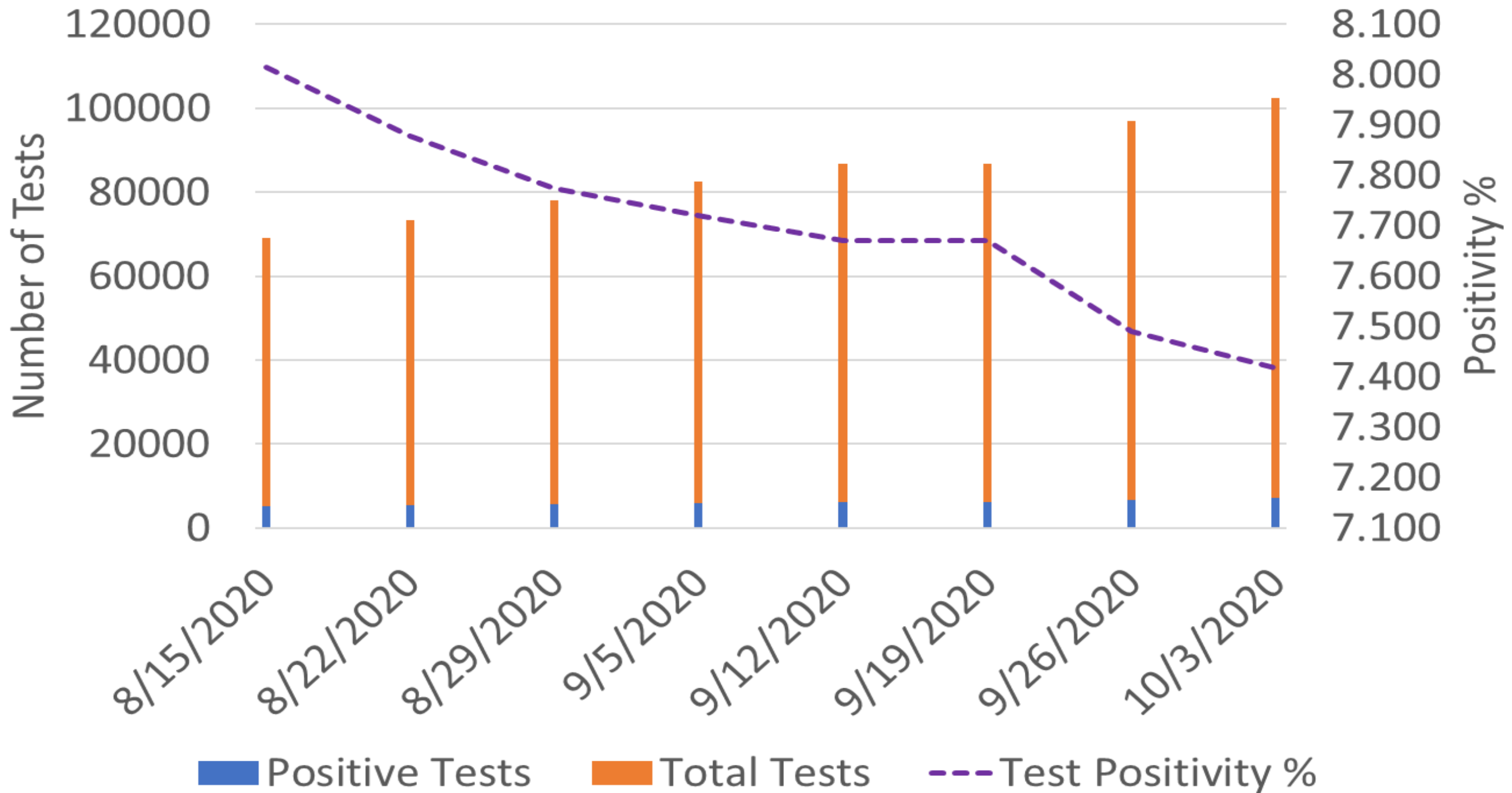
| Zip Code | Positive | Negative | Indeterminate | Total  | Percent Postive | Tests per 100,000* |
|----------|----------|----------|---------------|--------|-----------------|--------------------|
| 91901    | 121      | 4,291    | 7             | 4,419  | 2.7%            | 24,569             |
| 91902    | 294      | 5,077    | 12            | 5,383  | 5.5%            | 30,531             |
| 91905    | 7        | 339      | 0             | 346    | 2.0%            | *                  |
| 91906    | 31       | 995      | 1             | 1,027  | 3.0%            | *                  |
| 91910    | 2,287    | 28,010   | 61            | 30,358 | 7.5%            | 36,212             |
| 91911    | 2,745    | 26,548   | 85            | 29,378 | 9.3%            | 34,636             |
| 91913    | 850      | 14,724   | 35            | 15,609 | 5.4%            | 30,560             |
| 91914    | 324      | 5,604    | 10            | 5,938  | 5.5%            | 35,385             |
| 91915    | 552      | 8,354    | 23            | 8,929  | 6.2%            | 28,693             |

| Zip Code | Positive | Negative | Indeterminate | Total  | Percent Postive | Tests per 100,000* |
|----------|----------|----------|---------------|--------|-----------------|--------------------|
| 91901    | 129      | 4,525    | 8             | 4,662  | 2.8%            | 25,920             |
| 91902    | 312      | 5,404    | 13            | 5,729  | 5.4%            | 32,494             |
| 91905    | 7        | 357      | 0             | 364    | 1.9%            | *                  |
| 91906    | 38       | 1,047    | 1             | 1,086  | 3.5%            | *                  |
| 91910    | 2,374    | 29,432   | 65            | 31,871 | 7.4%            | 38,017             |
| 91911    | 2,885    | 28,157   | 88            | 31,130 | 9.3%            | 36,702             |
| 91913    | 892      | 15,702   | 38            | 16,632 | 5.4%            | 32,563             |
| 91914    | 336      | 5,964    | 11            | 6,311  | 5.3%            | 37,608             |
| 91915    | 592      | 8,874    | 24            | 9,490  | 6.2%            | 30,496             |



# COVID-19 Percentage Positive

## Chula Vista COVID-19 Percentage Positive





# Chula Vista Case Rate and Positivity %

| Date      | Period of Data Analyzed | New Cases per Day per 100k | Test Positivity % |
|-----------|-------------------------|----------------------------|-------------------|
| 8/15/2020 | 8/2 – 8/8               | 17.383                     | 8.014             |
| 8/22/2020 | 8/9 – 8/15              | 12.022                     | 7.878             |
| 8/29/2020 | 8/16 – 8/22             | 12.178                     | 7.774             |
| 9/5/2020  | 8/23 – 8/29             | 13.167                     | 7.721             |
| 9/12/2020 | 8/30 – 9/5              | 14.260                     | 7.671             |
| 9/19/2020 | 9/6 – 9/12              | 10.929                     | 7.671             |
| 9/26/2020 | 9/13 -9/19              | 11.814                     | 7.491             |
| 10/3/2020 | 9/20 -9/26              | 15.197                     | 7.418             |

| County risk level   | Adjusted case rate*<br><small>7-day average of daily COVID-19 cases per 100K with 7-day lag, adjusted for number of tests performed</small> | Positivity rate**<br><small>7-day average of daily COVID-19 cases per 100K with 7-day lag, adjusted for number of tests performed</small> |  |
|---|---|---|--|
|   |   | Entire county   | Healthy equity quartile  |
| <b>WIDESPREAD</b><br><small>Many non-essential indoor business operations are closed</small>  | <b>More than 7</b><br><small>Daily new cases (per 100k)</small>   | <b>More than 8%</b><br><small>Positive tests</small>  | <b>More than 8%</b><br><small>Positive tests</small>   |
| <b>SUBSTANTIAL</b><br><small>Some non-essential indoor business operations are closed</small> | <b>4-7</b><br><small>Daily new cases (per 100k)</small>   | <b>5 – 8% and 5.3 – 8% health equity metric</b><br><small>Positive tests</small>  | <b>5 – 8% and 5.3 – 8% health equity metric</b><br><small>Positive tests</small>             |
| <b>MODERATE</b><br><small>Some indoor business operations are open with modifications</small> | <b>1 – 3.9</b><br><small>Daily new cases (per 100k)</small>   | <b>2 – 4.9% and 2.2 – 5.2% health equity metric</b><br><small>Positive tests</small>  | <b>2 – 4.9% and 2.2 – 5.2% health equity metric</b><br><small>Positive tests</small>         |
| <b>MINIMAL</b><br><small>Most indoor business operations are open with modifications</small>  | <b>Less than 1</b><br><small>Daily new cases (per 100k)</small>   | <b>Less than 2% and Less than 2.2% health equity metric</b><br><small>Positive tests</small>  | <b>Less than 2% and Less than 2.2% health equity metric</b><br><small>Positive tests</small> |



# City Testing Site

- 3,499 tests conducted
- Averaging 292 tests/day

| Date       | Tests Completed |
|------------|-----------------|
| 10/4/2020  | 245             |
| 10/5/2020  | 296             |
| 10/6/2020  | 319             |
| 10/7/2020  | 300             |
| 10/8/2020  | 289             |
| 10/11/2020 | 279             |
| 10/12/2020 | 300             |
| 10/13/2020 | 257             |
| 10/14/2020 | 280             |
| 10/15/2020 | 279             |
| 10/18/2020 | 310             |
| 10/19/2020 | 345             |

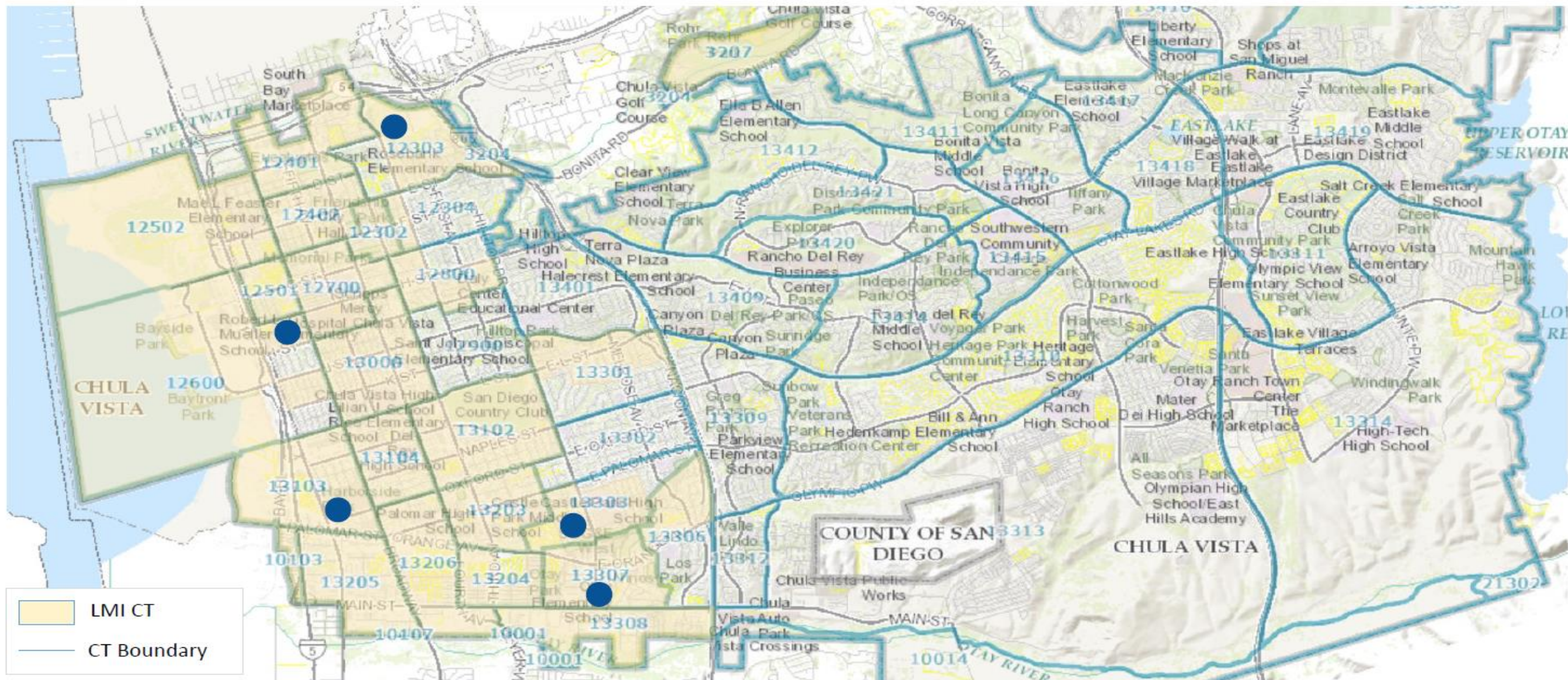




# CVESD Testing Support

## Community Development Block Grant Nature and Location of Public Service

### Family Health Center of San Diego—Resource Program FY21





# *Questions?*

[www.chulavistaca.gov/coronavirus](http://www.chulavistaca.gov/coronavirus)

@thinkchulavista