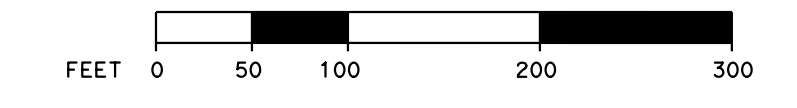


James W. Lindsey
 DISTRICT 11 RIGHT OF WAY ENGINEER
 L.S. 8355
 Exp. 12/31/2019
 DATE _____
 PROFESSIONAL LAND SURVEYOR
 STATE OF CALIFORNIA



NOTE:
 STATE'S RIGHTS ARE NOT EXTINGUISHED UNTIL
 RECORDATION OF RELATED CTC RESOLUTION.

CALIFORNIA TRANSPORTATION COMMISSION
 RESOLUTION DATE: - -

CTC NO.:

CTC RESOLUTION RECORDING DATA

REC. DATE: - -

FILE NO.:

STATE HIGHWAY MAP RECORDING DATA

FILE NO.: _____
 FILE AT THE REQUEST OF THE STATE OF CALIFORNIA
 TRANSPORTATION AGENCY, DEPARTMENT OF TRANSPORTATION,
 DISTRICT 11,

THIS ____ DAY OF _____ 19__, AT ____: __M.

COUNTY RECORDER FEE: 0

Ernest J. Dronenburg, Jr., COUNTY RECORDER

BY: _____
 DEPUTY COUNTY RECORDER

CITY OF CHULA VISTA

RANCHO DE LA NACION

MAP 166

SECTION 93

SECTION 90

SEGMENT 1

SEGMENT 4

SEGMENT 6

SEGMENT 5

SEGMENT 3

SEGMENT 2



LEGEND & NOTES

Coordinates, Bearings and
 Distances are based on the
 California Coordinate System
 of 1983, Zone 6 Epoch 2007.00
 DISTANCES ARE IN FEET unless
 otherwise noted. Multiply
 distances by 0.9999768 to
 obtain ground level distances

- IMPROVEMENTS EDGE OF PAVEMENT
- AREA TO BE RELINQUISHED
- (R) RADIAL BEARING
- FOUND POINT AS NOTED

P.N.: 1100020051 2
 E.A.: 11-2T1824

STATE OF CALIFORNIA
 DEPARTMENT OF TRANSPORTATION
 DISTRICT 11

RELINQUISHMENT MAP

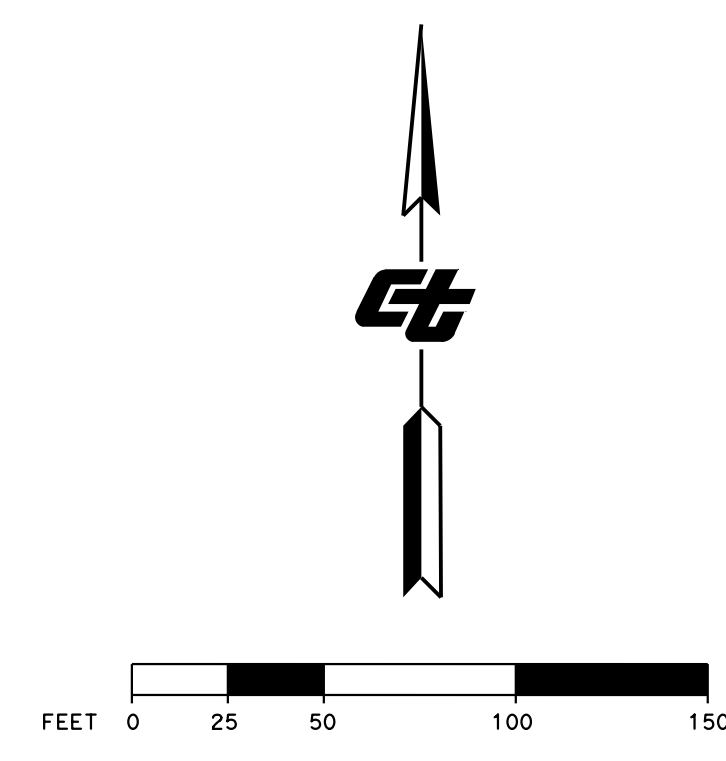
Relinquishment No. R34590

RIGHT OF WAY MAP NO. **POR 45028.2 & 45029.1**

COUNTY ROUTE	POST MILES	SCALE
SD 805	5.0 - 5.2	0 50 100
		SHEET 1 OF 3

CITY OF CHULA VISTA

MAP 6723



1/2" IRON PIN
PER MAP 6723
N 1 804 423.40
E 6 318 343.06

SEGMENT 2

COLLATERAL FACILITY

250' WIDE SDG&E
EASEMENT PER
BK 8032 PG 149
REC 12-08-1959 &
DOC 29368
REC 02-11-1960

DETAIL A

NO SCALE

DETAIL B

NO SCALE

SEGMENT 1

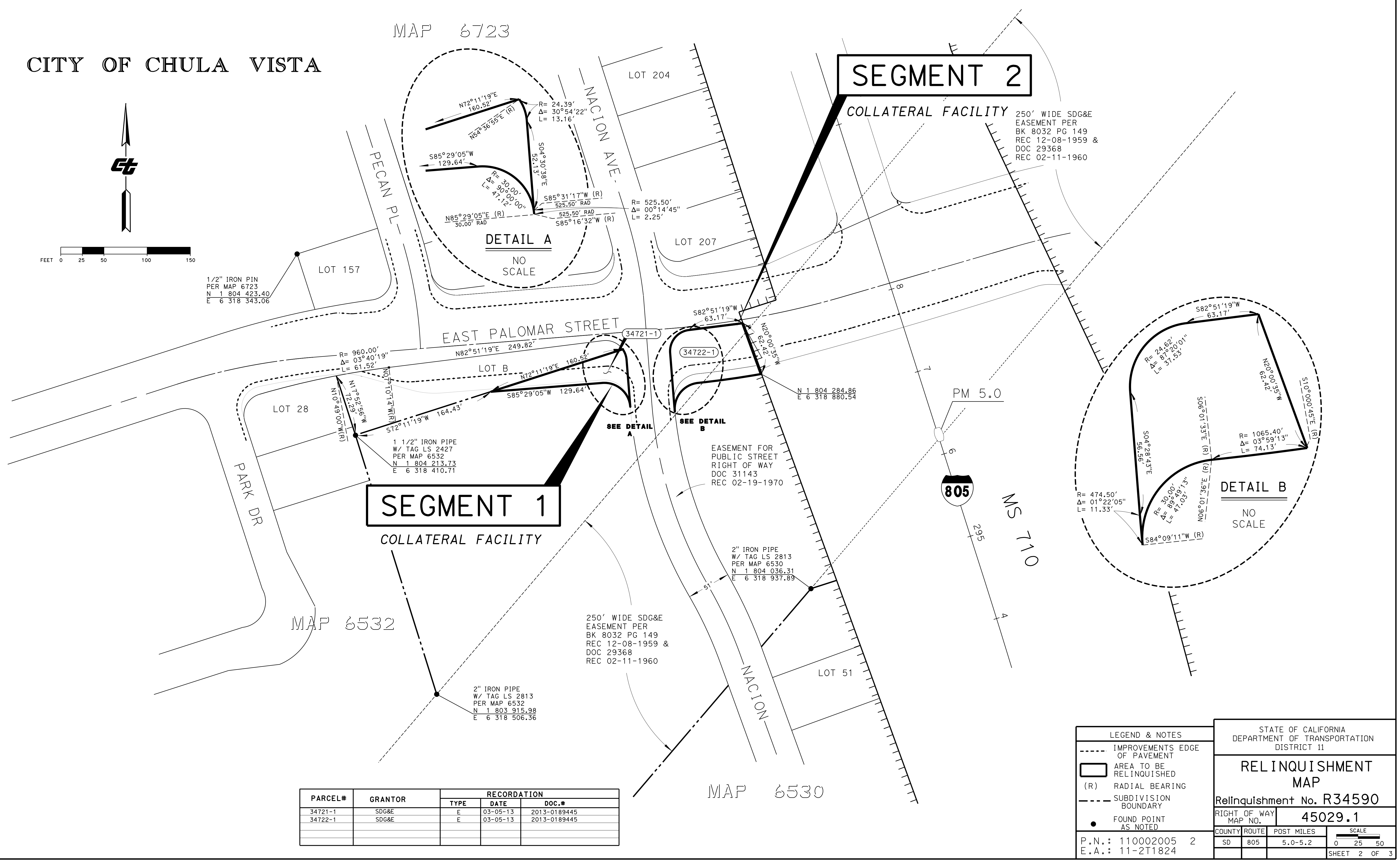
COLLATERAL FACILITY

MAP 6532

MAP 6530

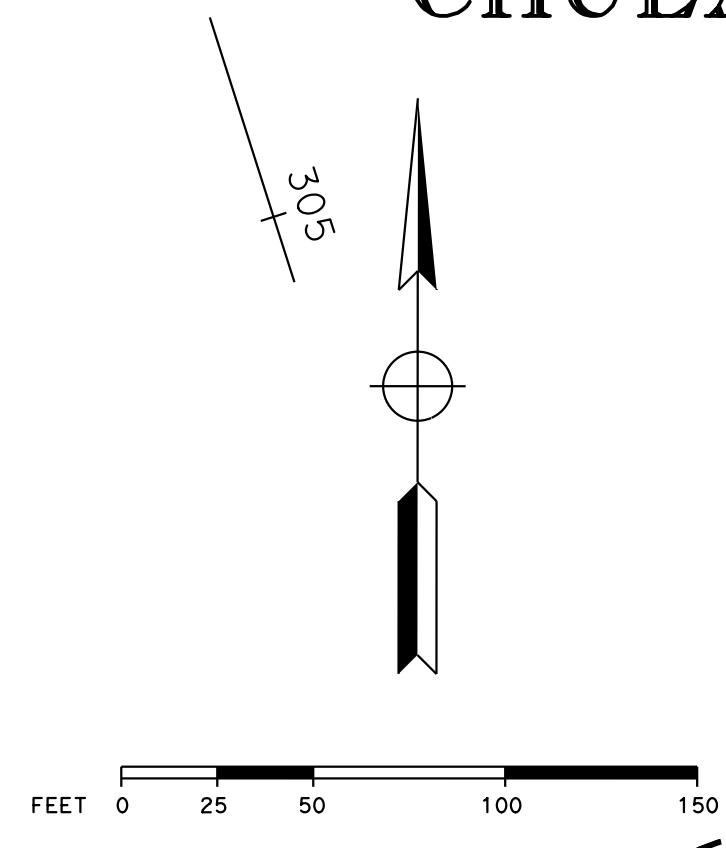
PARCEL#	GRANTOR	RECORDATION		
		TYPE	DATE	DOC.#
34721-1	SDG&E	E	03-05-13	2013-0189445
34722-1	SDG&E	E	03-05-13	2013-0189445

LEGEND & NOTES		STATE OF CALIFORNIA DEPARTMENT OF TRANSPORTATION DISTRICT 11	
---	IMPROVEMENTS EDGE OF PAVEMENT	RELINQUISHMENT MAP Relinquishment No. R34590	
□	AREA TO BE RELINQUISHED		
(R)	RADIAL BEARING	RIGHT OF WAY MAP NO. 45029.1	
---	SUBDIVISION BOUNDARY	COUNTY ROUTE	POST MILES
●	FOUND POINT AS NOTED	SD 805	5.0-5.2
P.N.: 110002005 2		SCALE 0 25 50	
E.A.: 11-2T1824		SHEET 2 OF 3	



CITY OF CHULA VISTA

MAP 6635



FEET 0 25 50 100 150

305

DETAIL E
NO SCALE

DETAIL D
NO SCALE

DETAIL C
NO SCALE

805

PM 5.06

MS 710

34728-1

34723-1

34724-1

34773-1

34649-1

34729-1

34730-1

34773-1

34723-1

34724-1

34773-1

34649-1

34729-1

34730-1

34773-1

34649-1

34729-1

34730-1

34773-1

34649-1

34729-1

34730-1

34773-1

34649-1

34729-1

34730-1

34773-1

34649-1

34729-1

34730-1

34773-1

34649-1

34729-1

34730-1

34773-1

34649-1

34729-1

34730-1

34773-1

34649-1

34729-1

34730-1

34773-1

34649-1

34729-1

34730-1

34773-1

34649-1

34729-1

34730-1

34773-1

34649-1

34729-1

34730-1

34773-1

34649-1

34729-1

34730-1

34773-1

34649-1

34729-1

34730-1

34773-1

34649-1

34729-1

34730-1

34773-1

34649-1

34729-1

34730-1

34773-1

34649-1

34729-1

34730-1

34773-1

34649-1

34729-1

34730-1

34773-1

34649-1

34729-1

34730-1

34773-1

34649-1

34729-1

34730-1

34773-1

34649-1

34729-1

34730-1

34773-1

34649-1

34729-1

34730-1

34773-1

34649-1

34729-1

34730-1

34773-1

34649-1

34729-1

34730-1

34773-1

34649-1

34729-1

34730-1

34773-1

34649-1

34729-1

34730-1

34773-1

34649-1

34729-1

34730-1

34773-1

34649-1

34729-1

34730-1

34773-1

34649-1

34729-1

34730-1

34773-1

34649-1

34729-1

34730-1

34773-1

34649-1

34729-1

34730-1

34773-1

34649-1

34729-1

34730-1

34773-1

34649-1

34729-1

34730-1

34773-1

34649-1

34729-1

34730-1

34773-1

34649-1

34729-1

34730-1

34773-1

34649-1

34729-1

34730-1

34773-1

34649-1

34729-1

34730-1

34773-1

34649-1

34729-1

34730-1

34773-1

34649-1

34729-1

34730-1

34773-1

34649-1

34729-1

34730-1

34773-1

34649-1

34729-1

34730-1

34773-1

34649-1

34729-1

34730-1

34773-1

34649-1

34729-1

34730-1

34773-1

34649-1

34729-1

34730-1

34773-1

34649-1

34729-1

34730-1

34773-1

34649-1

34729-1

34730-1

34773-1

34649-1

34729-1

34730-1

34773-1

34649-1

34729-1

34730-1

34773-1

34649-1

34729-1

34730-1

34773-1

34649-1

34729-1

34730-1

34773-1

34649-1

34729-1

34730-1

34773-1

34649-1

34729-1

34730-1

34773-1

34649-1

34729-1

34730-1

34773-1

34649-1

34729-1

34730-1

34773-1

34649-1

34729-1

34730-1

34773-1

34649-1

34729-1

34730-1

34773-1

34649-1

34729-1

34730-1

34773-1

34649-1

34729-1

34730-1

34773-1

34649-1

34729-1

34730-1

34773-1

34649-1

34729-1

34730-1

34773-1

34649-1

34729-1

34730-1

34773-1

34649-1

34729-1

34730-1

34773-1

34649-1

34729-1

34730-1