

*CITY OF CHULA VISTA*

*PUBLIC HEARING*  
*BIKE LANES ON BROADWAY*

*City Council Presentation*

*February 27, 2018*



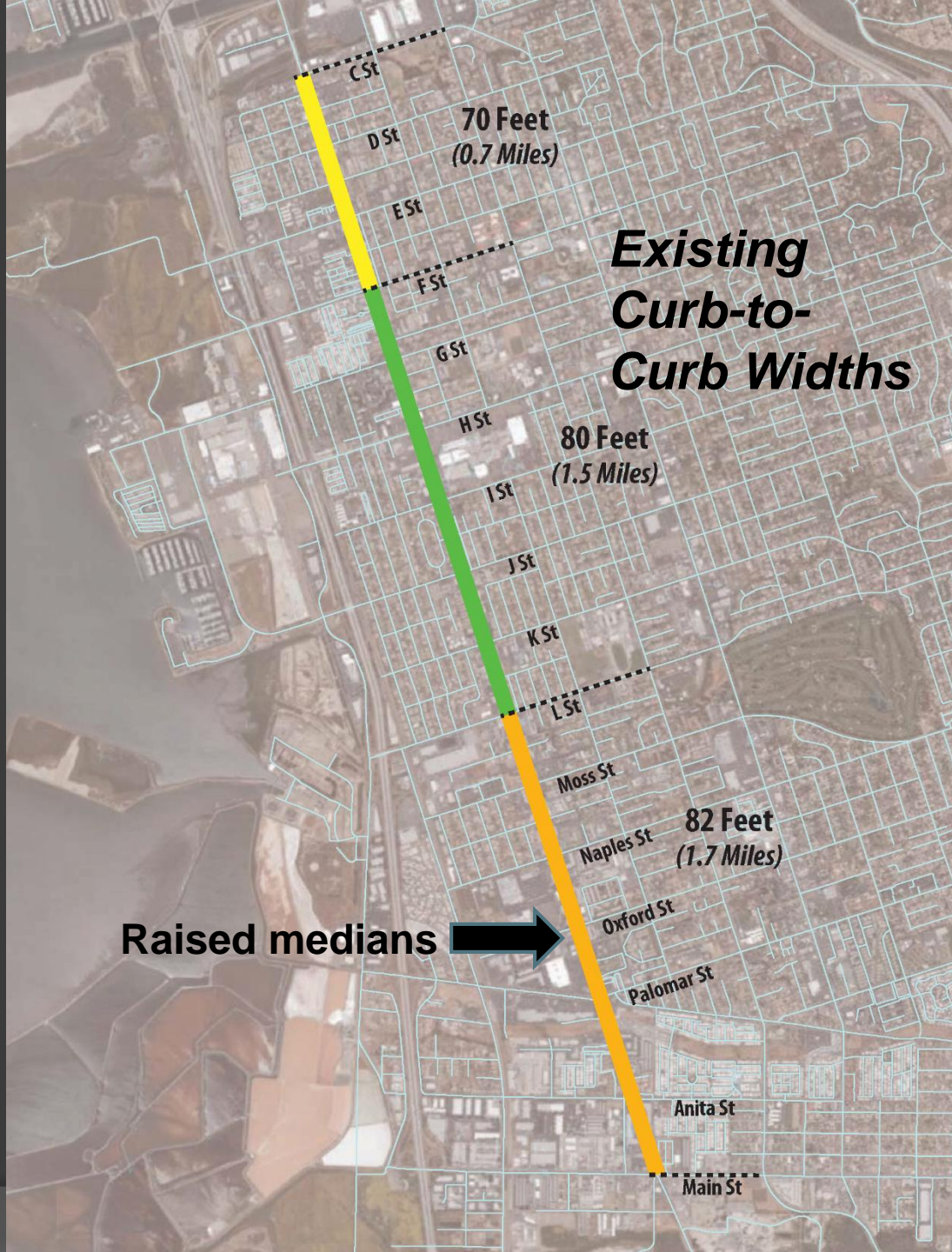
# Existing Curb-to-Curb Widths

Raised medians 

70 Feet  
(0.7 Miles)

80 Feet  
(1.5 Miles)

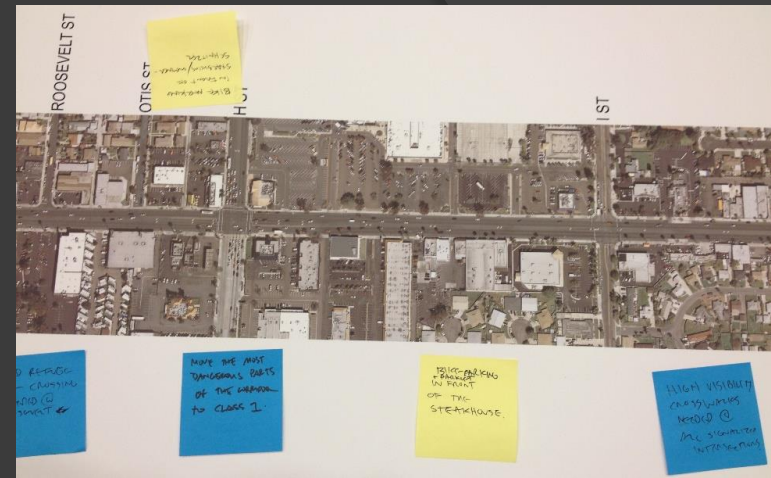
82 Feet  
(1.7 Miles)



# Community Outreach

## Community Workshop Series #1

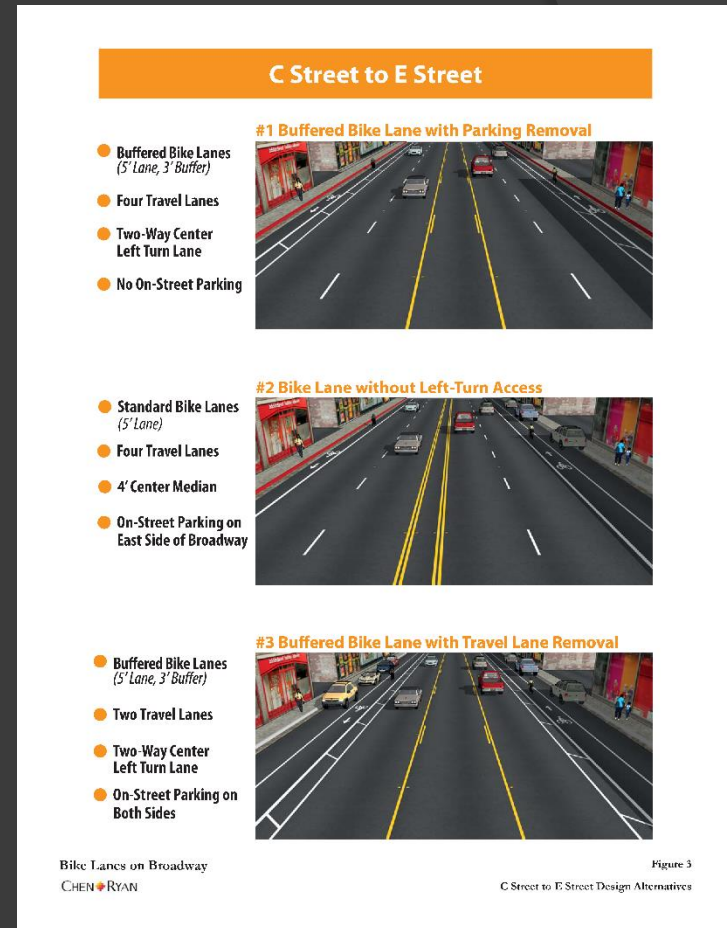
- PowerPoint Presentation
- Exercise: Participant identification of existing issues
  - Intersections are a safety concern (right-turn lanes)
  - Locations where bike parking is needed
- Comment Cards
  - Support for bike facilities, protected or buffered bike lanes were preferred
  - Vehicle parking is needed along the corridor



# Community Outreach

## Community Workshop Series #2

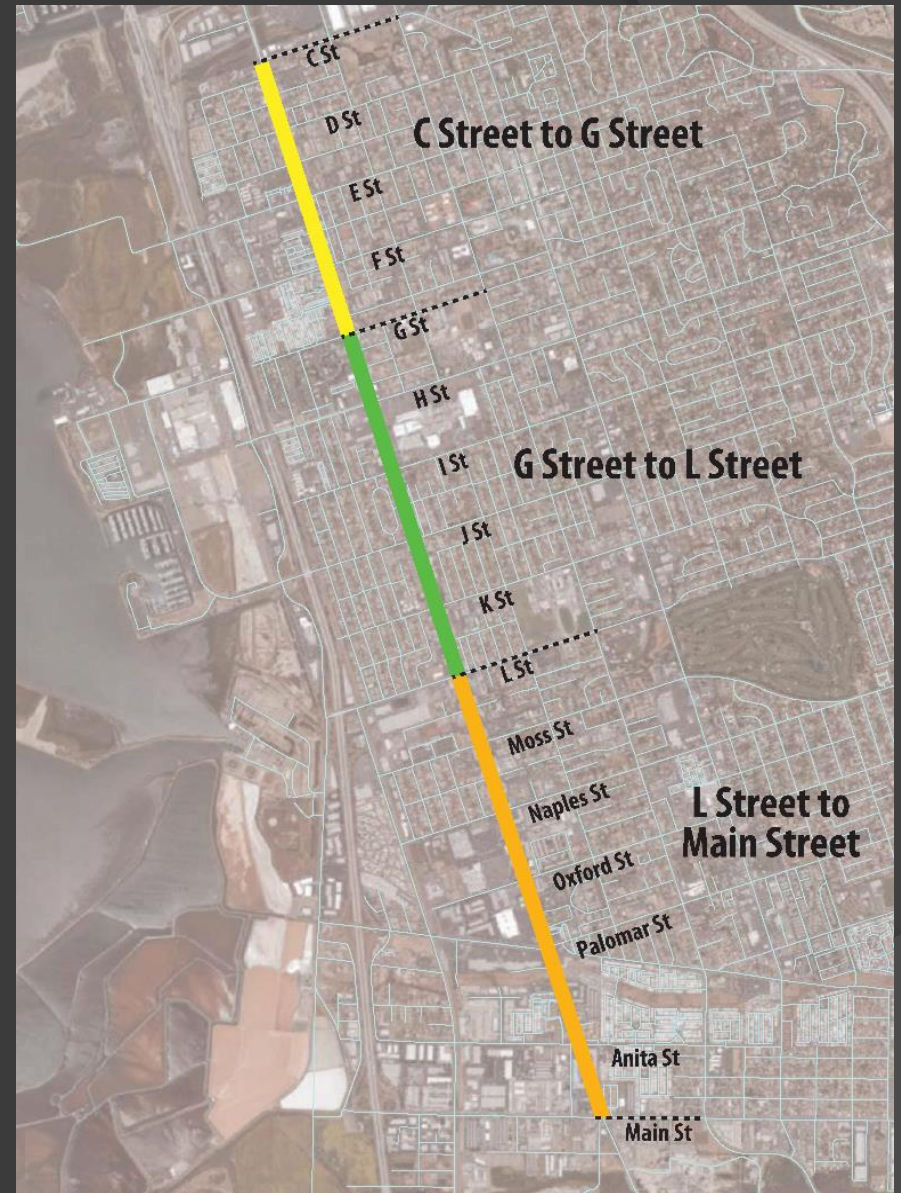
- Presented work completed to date and input collected
- Presented design alternatives
- Participants placed a sticker on their preferred alternative for each segment
- Results were used to identify a preferred alternative





# Preferred Alternative

- Three segments are described in terms of:
  - Bike Facility
  - On-Street Parking
  - Raised Median
  - Travel Lanes
  - Vehicle Volume





**C Street to G Street**



# Broadway, from C Street to G Street – Buffered Bike Lanes w/ Travel Lane Removal



- Buffered Bike Lanes
- 14' Center Two-Way-Left-Turn Lane  
(5' Lane, 3' Buffer)
- Two 12' Travel Lanes
- Two 8' On-Street Parking Lanes







## Broadway, from G Street to L Street – Bike Lanes w/ Travel Lanes Narrowed



- Bike Lanes (5' Lane)
- Four 11' Travel Lanes
- 10' Center Two-Way-Left-Turn Lane
- Two 8' On-Street Parking Lanes







## Broadway, from L Street to Main Street – Buffered Bike Lane w/ No On-Street Parking



- **Bike Lanes**  
(5' Lane, 4' Buffer)
- **Four 11' – 12' Travel Lanes**
- **Existing Raised Median with Left-Turn Pockets**
- **No On-Street Parking**

# Active Transportation Program Grant

- Applied for 2016 ATP grant to do entire corridor from C Street to Main Street
- Project not selected for initial funding.
- City funded C Street to G Street
- Project was selected for partial funding in 2017 to do G Street to Main Street
- Grant amount is \$851,000 of \$1,466,000
- Completion expected by fall 2018

# Recommendation

- That Council:
- Open the Public Hearing
- Amend CIP # STM0392 & appropriate \$103,728 from the SB-1 ATPL grant program to fund STM0392
- Accept the traffic impact study & environmental analysis recommending to install bike lanes on Broadway
- Amend Schedule VI to reflect revised parking zones south of L Street upon completion of project



Questions / Comments?







## Curb-to-Curb Width and Vehicle Volumes

- Important consideration when evaluating roadway modifications
- Roadways with ADT of 20,000 – 25,000 or less may be good candidates for a Road Diet





### Percent Occupancy of Street Parking

█ 53% - 60%

█ 39% - 52%

█ 32% - 38%

█ No Parking Any Time

*Data Collected between 2pm and 3pm on 6-27-15*

# Community Outreach

## *Community Workshop Series #1*

- July 29<sup>th</sup>, 30<sup>th</sup>, & August 3<sup>rd</sup> 2015 at Council Chambers
- Flyer was mailed to over 1,700 property owners along Broadway and sent to the following organizations:

MTS

SANDAG

Southwest Civic Association

Crossroads II Civic Assoc.

BikeWalkChulaVista

San Diego County Bike Coalition

Circulate San Diego

Chula Vista School District

Chula Vista Community Collaborative

Chula Vista Fire Department

Chula Vista Chamber of Commerce

Norman Park Senior Center

SD County Health & Human Services

City of National City

Otay Mesa-Nestor CPG (City of SD)

City of San Diego

- Hand delivered and posted at local bike shops

# Community Outreach

## *Community Workshop Series #2*

- Previous advertisement methods with the addition of hand delivered flyers to every parcel with limited or no off-street parking (35 parcels)
- Two Public Sessions:
  - September 21<sup>st</sup> 2015 at Council Chambers
  - October 1<sup>st</sup> 2015 at the South Chula Vista Library
- Chamber of Commerce presentation September 30<sup>th</sup>
- Safety Commission approval on January 6, 2016
- City Council approved Feasibility Study on February 16, 2016