

DIST	COUNTY	ROUTE	POST MILES TOTAL PROJECT	SHEET No	TOTAL SHEETS
11	SD	805	4.7/5.6	525A	650

*Craig Shannon* 6-20-14  
REGISTERED CIVIL ENGINEER DATE

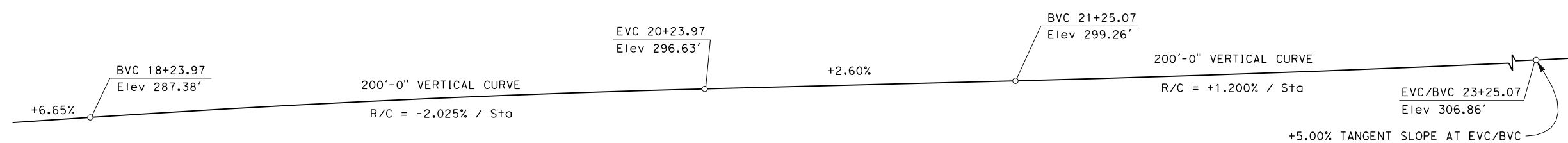
PLANS APPROVAL DATE

*The State of California or its officers or agents shall not be responsible for the accuracy or completeness of electronic copies of this plan sheet.*

CRAIG SHANNON  
No. 66998  
Exp. 9/30/14  
CIVIL  
STATE OF CALIFORNIA

SANDAG  
401 "B" STREET, SUITE 800  
SAN DIEGO, CALIFORNIA 92101

KLEINFELDER | SIMON WONG  
550 WEST C STREET, SUITE 1200  
SAN DIEGO, CALIFORNIA 92101

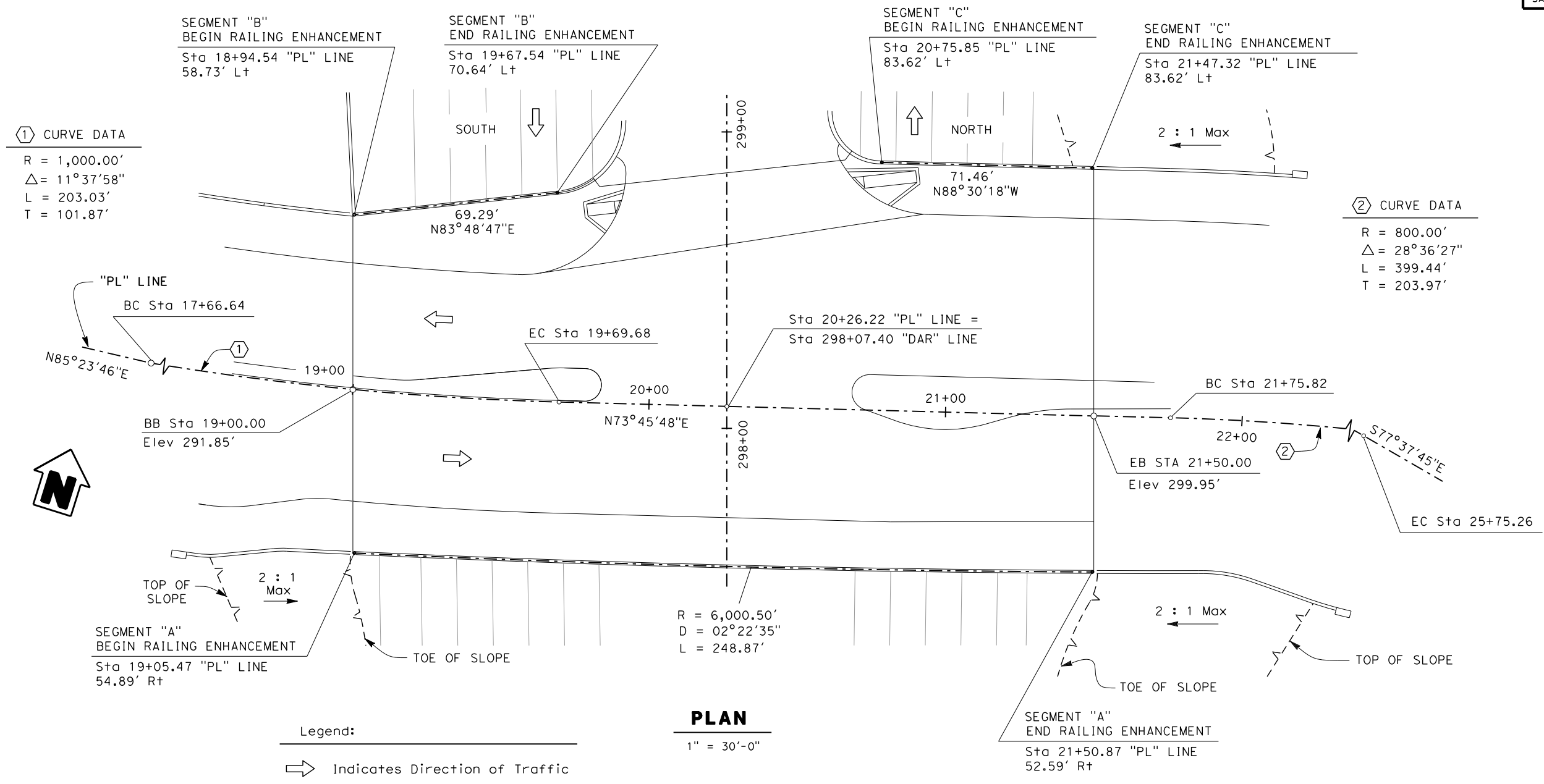


① CURVE DATA

R = 1,000.00'
Δ = 11°37'58"
L = 203.03'
T = 101.87'

② CURVE DATA

R = 800.00'
Δ = 28°36'27"
L = 399.44'
T = 203.97'



NOTE:  
THE CONTRACTOR SHALL VERIFY ALL CONTROLLING FIELD DIMENSIONS BEFORE ORDERING OR FABRICATING ANY MATERIAL.

CONTRACT CHANGE ORDER NO. \_\_\_\_\_  
SHEET \_\_\_\_ OF \_\_\_\_

DESIGN OVERSIGHT	DESIGN BY N. Vu	CHECKED C. Shannon	<b>PREPARED FOR THE STATE OF CALIFORNIA</b> DEPARTMENT OF TRANSPORTATION	Craig Shannon PROJECT ENGINEER	BRIDGE NO. 57-1222	<b>PALOMAR STREET OC (REPLACE)</b> <b>GENERAL RAILING PLAN (1 OF 2)</b>
SIGN OFF DATE	DETAILS BY T. Brittain	CHECKED N. Vu			POST MILES 5.07	
DESIGN DETAIL SHEET (ENGLISH) (REV.7/16/10)	QUANTITIES BY N. Vu	CHECKED C. Shannon				
ORIGINAL SCALE IN INCHES FOR REDUCED PLANS			0 1 2 3	UNIT: PROJECT NUMBER & PHASE: 2762 1100020051	CONTRACT NO.: 11-2T1821	DISREGARD PRINTS BEARING EARLIER REVISION DATES
				FILE => 57-1222-za-addrde+01.dgn	REVISION DATES	SHEET OF

USERNAME => TBR11101 DATE PLOTTED => 6/19/2014 TIME PLOTTED => 3:17:33 PM

DIST	COUNTY	ROUTE	POST MILES TOTAL PROJECT	SHEET No	TOTAL SHEETS
11	SD	805	4.7/5.6	525B	650

*Craig Shannon* 6-20-14  
 REGISTERED CIVIL ENGINEER DATE

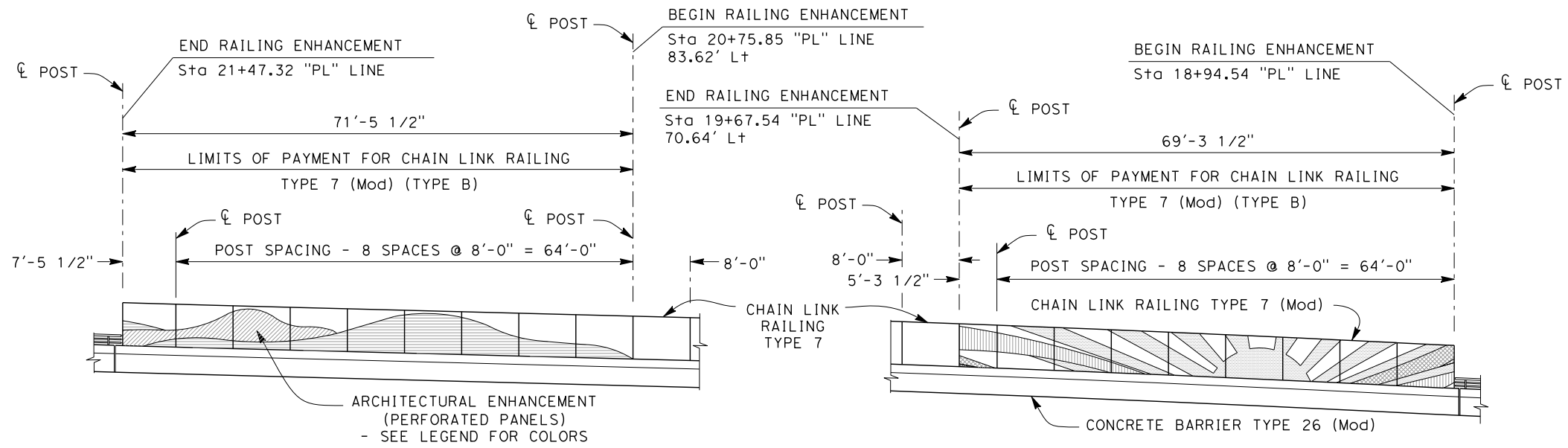
PLANS APPROVAL DATE

The State of California or its officers or agents shall not be responsible for the accuracy or completeness of electronic copies of this plan sheet.

CRAIG SHANNON  
 No. 66998  
 Exp. 9/30/14  
 CIVIL  
 STATE OF CALIFORNIA

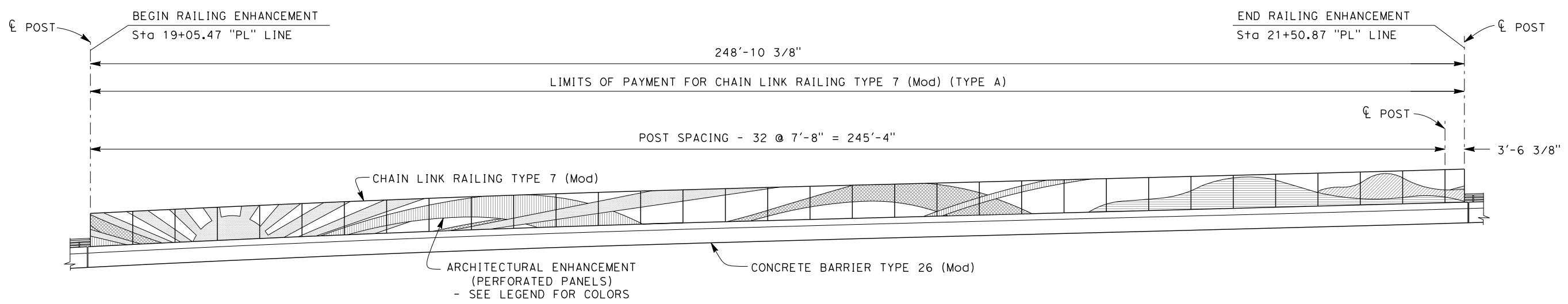
SANDAG  
 401 "B" STREET, SUITE 800  
 SAN DIEGO, CALIFORNIA 92101

KLEINFELDER | SIMON WONG  
 550 WEST C STREET, SUITE 1200  
 SAN DIEGO, CALIFORNIA 92101



**PARTIAL EXTERIOR ELEVATION  
 LEFT EDGE OF DECK**

1" = 10'-0"



**EXTERIOR ELEVATION  
 RIGHT EDGE OF DECK**

1" = 10'-0"

NOTE:  
 THE CONTRACTOR SHALL VERIFY ALL  
 CONTROLLING FIELD DIMENSIONS  
 BEFORE ORDERING OR FABRICATING  
 ANY MATERIAL.

CONTRACT CHANGE ORDER NO. \_\_\_\_\_  
 SHEET \_\_\_\_ OF \_\_\_\_

DESIGN OVERSIGHT	DESIGN BY N. Vu	CHECKED C. Shannon	<b>PREPARED FOR THE          STATE OF CALIFORNIA          DEPARTMENT OF TRANSPORTATION</b>	BRIDGE NO. 57-1222	<b>PALOMAR STREET OC (REPLACE)          GENERAL RAILING PLAN (2 OF 2)</b>	
SIGN OFF DATE	DETAILS BY T. Brittain	CHECKED N. Vu		PROJECT ENGINEER Craig Shannon		POST MILES 5.07
DESIGN DETAIL SHEET (ENGLISH) (REV.7/16/10)	QUANTITIES BY N. Vu	CHECKED C. Shannon		UNIT: 2762		CONTRACT NO.: 11-2T1821
ORIGINAL SCALE IN INCHES FOR REDUCED PLANS			0 1 2 3	PROJECT NUMBER & PHASE: 1100020051	REVISION DATES	
				FILE => 57-1222-za-addrde+02.dgn	5-29-14 6-20-14	

USERNAME => tbr:tttoin DATE PLOTTED => 6/19/2014 TIME PLOTTED => 3:18:20 PM

DIST	COUNTY	ROUTE	POST MILES TOTAL PROJECT	SHEET No	TOTAL SHEETS
11	SD	805	4.7/5.6	525C	650

*Craig Shannon* 6-20-14  
 REGISTERED CIVIL ENGINEER DATE

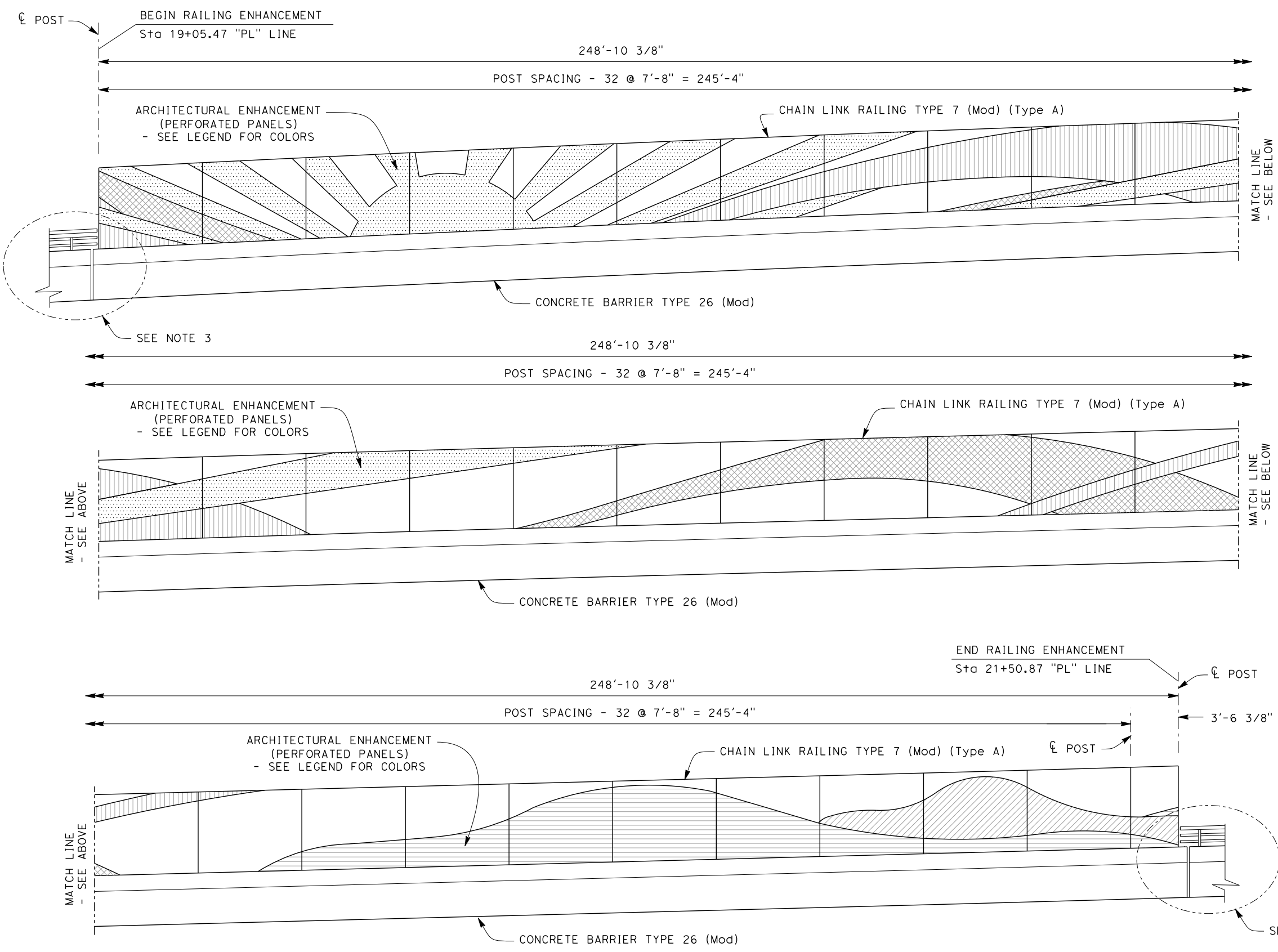
PLANS APPROVAL DATE

CRAIG SHANNON  
 No. 66998  
 Exp. 9/30/14  
 CIVIL  
 STATE OF CALIFORNIA

*The State of California or its officers or agents shall not be responsible for the accuracy or completeness of electronic copies of this plan sheet.*

SANDAG  
 401 "B" STREET, SUITE 800  
 SAN DIEGO, CALIFORNIA 92101

KLEINFELDER | SIMON WONG  
 550 WEST C STREET, SUITE 1200  
 SAN DIEGO, CALIFORNIA 92101



PANEL FINISH LEGEND:

[Pattern]	"YELLOW / ORANGE" PERFORATED PANEL
[Pattern]	"DARK GREEN" PERFORATED PANEL
[Pattern]	"LIGHT GREEN" PERFORATED PANEL
[Pattern]	"DARK BLUE" PERFORATED PANEL
[Pattern]	"LIGHT BLUE" PERFORATED PANEL

- NOTES:
- Color scheme for perforated panels shall be submitted to the City of Chula Vista landscape architect for review and approval prior to fabrication
  - Anti-graffiti coating to be approved by resident engineer
  - See "TYPICAL ELEVATION" on "BARRIER AND RAILING DETAILS NO. 2" sheet for more information
  - See "NORTHWEST ELEVATION" on "BARRIER AND RAILING DETAILS NO. 1" sheet

NOTE:  
 THE CONTRACTOR SHALL VERIFY ALL CONTROLLING FIELD DIMENSIONS BEFORE ORDERING OR FABRICATING ANY MATERIAL.

**EXTERIOR ELEVATION - SEGMENT "A"**

1/4" = 1'-0"

CONTRACT CHANGE ORDER NO. \_\_\_\_\_  
 SHEET \_\_\_\_ OF \_\_\_\_

DESIGN OVERSIGHT	DESIGN BY N. Vu	CHECKED C. Shannon	<b>PREPARED FOR THE          STATE OF CALIFORNIA          DEPARTMENT OF TRANSPORTATION</b>	Craig Shannon PROJECT ENGINEER	BRIDGE NO. 57-1222	<b>PALOMAR STREET OC (REPLACE)          RAILING ELEVATION NO. 1</b>				
SIGN OFF DATE	DETAILS BY T. Brittain	CHECKED N. Vu			POST MILES 5.07					
	QUANTITIES BY N. Vu	CHECKED C. Shannon								
DESIGN DETAIL SHEET (ENGLISH) (REV.7/16/10)		ORIGINAL SCALE IN INCHES FOR REDUCED PLANS		UNIT: 2762	PROJECT NUMBER & PHASE: 1100020051	CONTRACT NO.: 11-2T1821	DISREGARD PRINTS BEARING EARLIER REVISION DATES	REVISION DATES	SHEET	OF
				FILE => 57-1222-za-addrde+03.dgn			5-29-14	6-20-14		

USERNAME => tbr11101 DATE PLOTTED => 6/19/2014 TIME PLOTTED => 3:22:21 PM

DIST	COUNTY	ROUTE	POST MILES TOTAL PROJECT	SHEET No	TOTAL SHEETS
11	SD	805	4.7/5.6	525D	650

*Craig Shannon* 6-20-14  
 REGISTERED CIVIL ENGINEER DATE

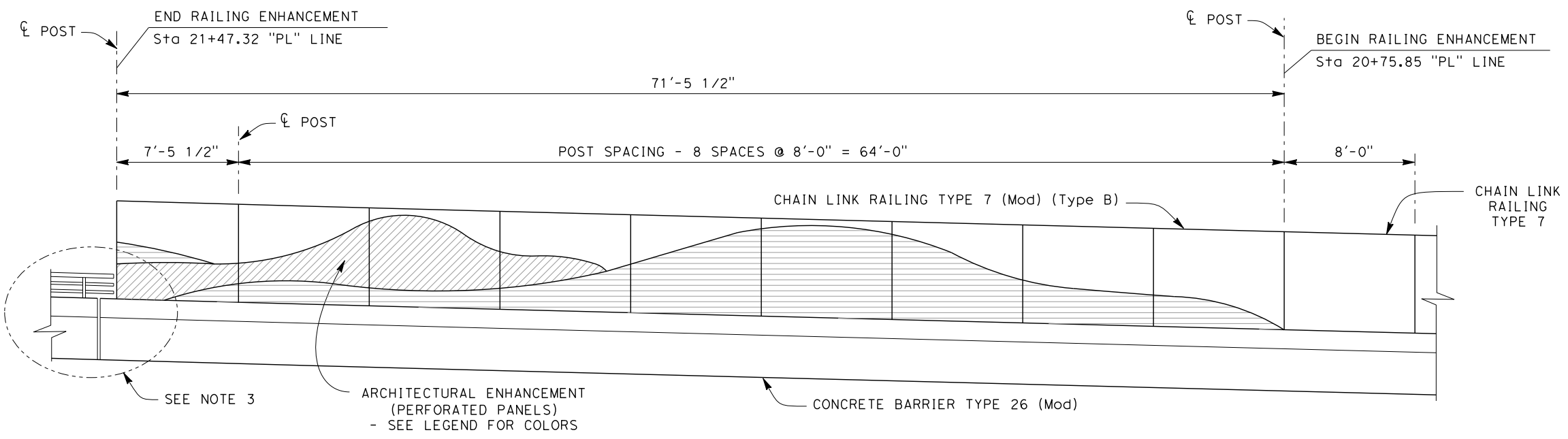
PLANS APPROVAL DATE

STATE OF CALIFORNIA REGISTERED PROFESSIONAL ENGINEER  
 CRAIG SHANNON  
 No. 66998  
 Exp. 9/30/14  
 CIVIL

The State of California or its officers or agents shall not be responsible for the accuracy or completeness of electronic copies of this plan sheet.

SANDAG  
 401 "B" STREET, SUITE 800  
 SAN DIEGO, CALIFORNIA 92101

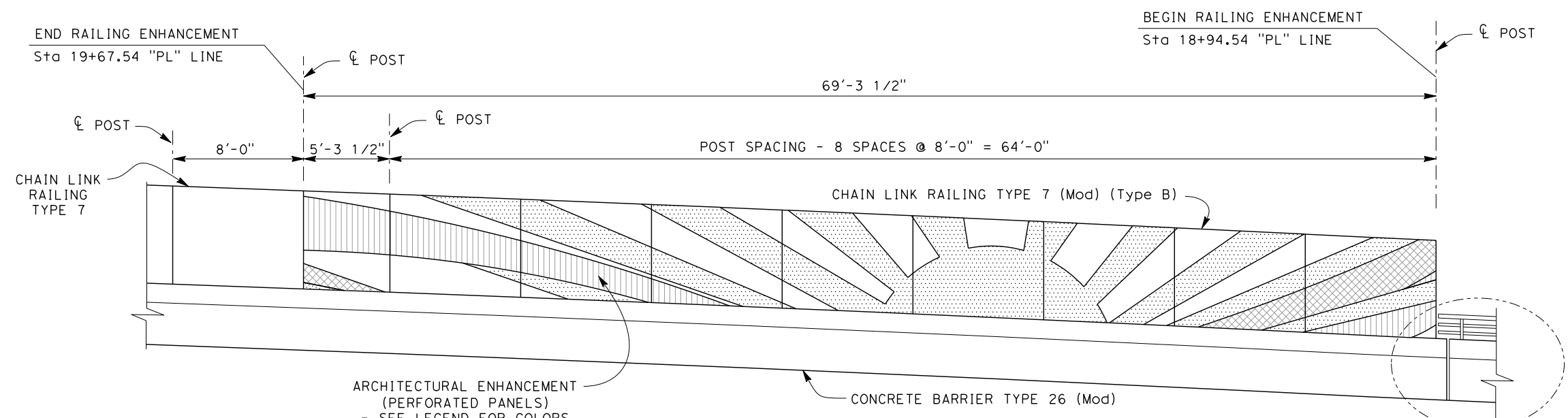
KLEINFELDER | SIMON WONG  
 550 WEST C STREET, SUITE 1200  
 SAN DIEGO, CALIFORNIA 92101



**EXTERIOR ELEVATION - SEGMENT "C"**  
 1/4" = 1'-0"

PANEL FINISH LEGEND:

[Pattern]	"YELLOW / ORANGE" PERFORATED PANEL
[Pattern]	"DARK GREEN" PERFORATED PANEL
[Pattern]	"LIGHT GREEN" PERFORATED PANEL
[Pattern]	"DARK BLUE" PERFORATED PANEL
[Pattern]	"LIGHT BLUE" PERFORATED PANEL



**EXTERIOR ELEVATION - SEGMENT "B"**  
 1/4" = 1'-0"

- NOTES:
- Color scheme for perforated panels shall be submitted to the City of Chula Vista landscape architect for review and approval prior to fabrication
  - Anti-graffiti coating to be approved by resident engineer
  - See "TYPICAL ELEVATION" on "BARRIER AND RAILING DETAILS NO. 2" sheet for more information
  - See "NORTHWEST ELEVATION" on "BARRIER AND RAILING DETAILS NO. 1" sheet

NOTE:  
 THE CONTRACTOR SHALL VERIFY ALL CONTROLLING FIELD DIMENSIONS BEFORE ORDERING OR FABRICATING ANY MATERIAL.

CONTRACT CHANGE ORDER NO. \_\_\_\_\_  
 SHEET \_\_\_\_ OF \_\_\_\_

DESIGN OVERSIGHT	DESIGN BY N. Vu	CHECKED C. Shannon	<b>PREPARED FOR THE STATE OF CALIFORNIA</b> DEPARTMENT OF TRANSPORTATION	Craig Shannon PROJECT ENGINEER	BRIDGE NO. 57-1222	<b>PALOMAR STREET OC (REPLACE)</b> <b>RAILING ELEVATION NO. 2</b>
SIGN OFF DATE	DETAILS BY T. Brittain	CHECKED N. Vu		PROJECT NUMBER & PHASE: 1100020051	POST MILES 5.07	
DESIGN DETAIL SHEET (ENGLISH) (REV.7/16/10)	QUANTITIES BY N. Vu	CHECKED C. Shannon		CONTRACT NO.: 11-2T1821	REVISION DATES	
ORIGINAL SCALE IN INCHES FOR REDUCED PLANS			0 1 2 3	UNIT: 2762	DISREGARD PRINTS BEARING EARLIER REVISION DATES	SHEET OF
			FILE => 57-1222-za-addrdet+04.dgn	REVISION DATES: 5-29-14, 6-20-14		

USERNAME => TBRITTAI DATE PLOTTED => 6/19/2014 TIME PLOTTED => 3:25:16 PM

DIST	COUNTY	ROUTE	POST MILES TOTAL PROJECT	SHEET No	TOTAL SHEETS
11	SD	805	4.7/5.6	525E	650

*Craig Shannon* 6-20-14  
REGISTERED CIVIL ENGINEER DATE

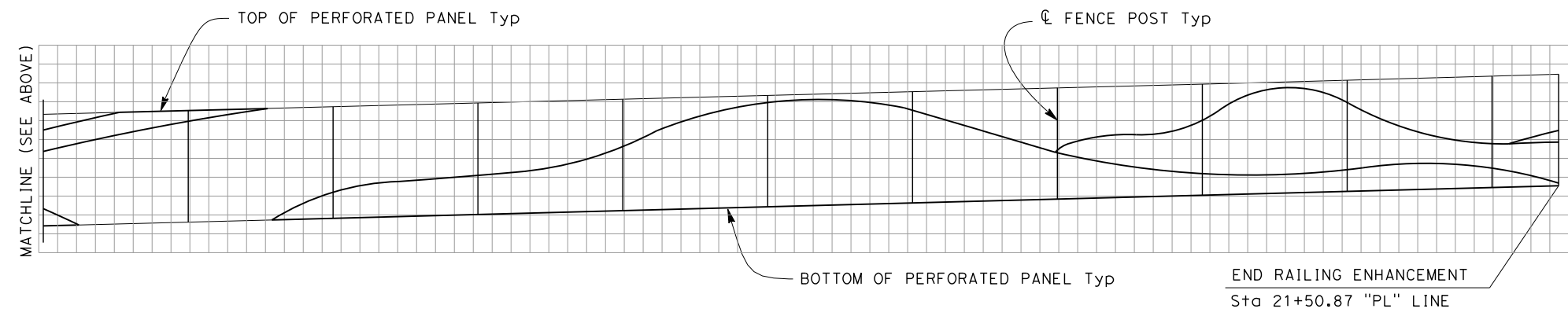
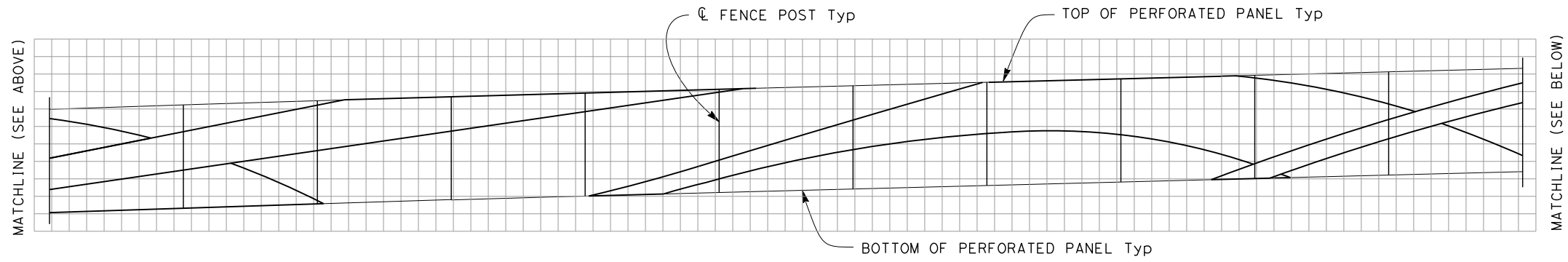
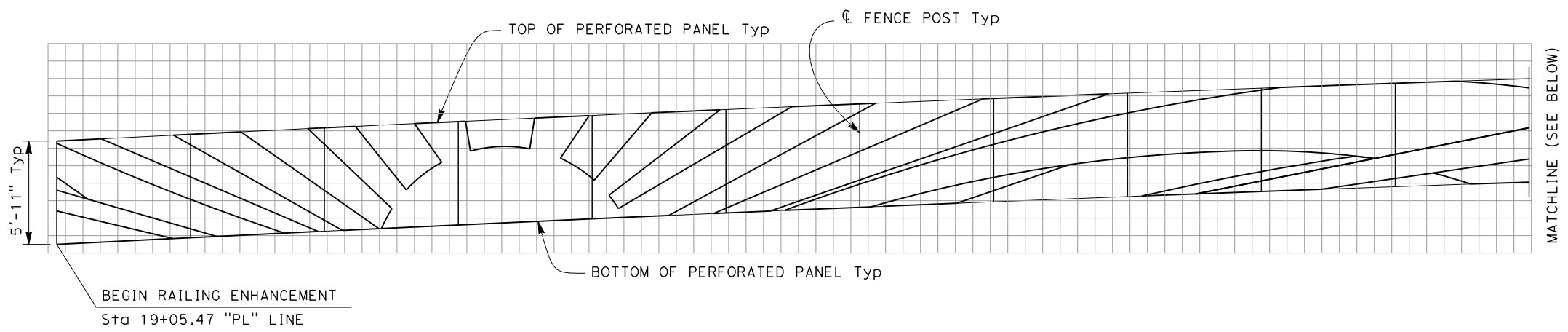
PLANS APPROVAL DATE

*CRAIG SHANNON*  
REGISTERED PROFESSIONAL ENGINEER  
No. 66998  
Exp. 9/30/14  
CIVIL  
STATE OF CALIFORNIA

The State of California or its officers or agents shall not be responsible for the accuracy or completeness of electronic copies of this plan sheet.

SANDAG  
401 "B" STREET, SUITE 800  
SAN DIEGO, CALIFORNIA 92101

KLEINFELDER | SIMON WONG  
550 WEST C STREET, SUITE 1200  
SAN DIEGO, CALIFORNIA 92101



### EXTERIOR ELEVATION - SEGMENT "A" ARCHITECTURAL PANEL TEMPLATE

1/4" = 1'-0"

NOTES:

1. A 1'-0" grid is shown for estimating and layout purposes
2. Exposed edges of perforated metal inserts shall be ground smooth prior to galvanizing and painting
3. See "RAILING ELEVATIONS" sheet for more informaton

NOTE:  
THE CONTRACTOR SHALL VERIFY ALL CONTROLLING FIELD DIMENSIONS BEFORE ORDERING OR FABRICATING ANY MATERIAL.

CONTRACT CHANGE ORDER NO. \_\_\_\_\_  
SHEET \_\_\_\_ OF \_\_\_\_

DESIGN OVERSIGHT	DESIGN BY N. Vu	CHECKED C. Shannon	<b>PREPARED FOR THE  STATE OF CALIFORNIA  DEPARTMENT OF TRANSPORTATION</b>	Craig Shannon PROJECT ENGINEER	BRIDGE NO. 57-1222	<b>PALOMAR STREET OC (REPLACE)  RAILING DETAILS NO. 1</b>
SIGN OFF DATE	DETAILS BY T. Brittain	CHECKED C. Cushing			POST MILES 5.07	
	QUANTITIES BY N. Vu	CHECKED C. Shannon				
DESIGN DETAIL SHEET (ENGLISH) (REV.7/16/10)		ORIGINAL SCALE IN INCHES FOR REDUCED PLANS		UNIT: 2762	PROJECT NUMBER & PHASE: 1100020051	CONTRACT NO.: 11-2T1821
				DISREGARD PRINTS BEARING EARLIER REVISION DATES		REVISION DATES
						5-29-14 6-20-14
				FILE => 57-1222-za-addrde+05.dgn		SHEET OF

TIME PLOTTED => 3:25:51 PM  
USERNAME => TBRITTAI\DATE PLOTTED => 6/19/2014

DIST	COUNTY	ROUTE	POST MILES TOTAL PROJECT	SHEET No	TOTAL SHEETS
11	SD	805	4.7/5.6	525F	650

*Craig Shannon* 6-20-14  
REGISTERED CIVIL ENGINEER DATE

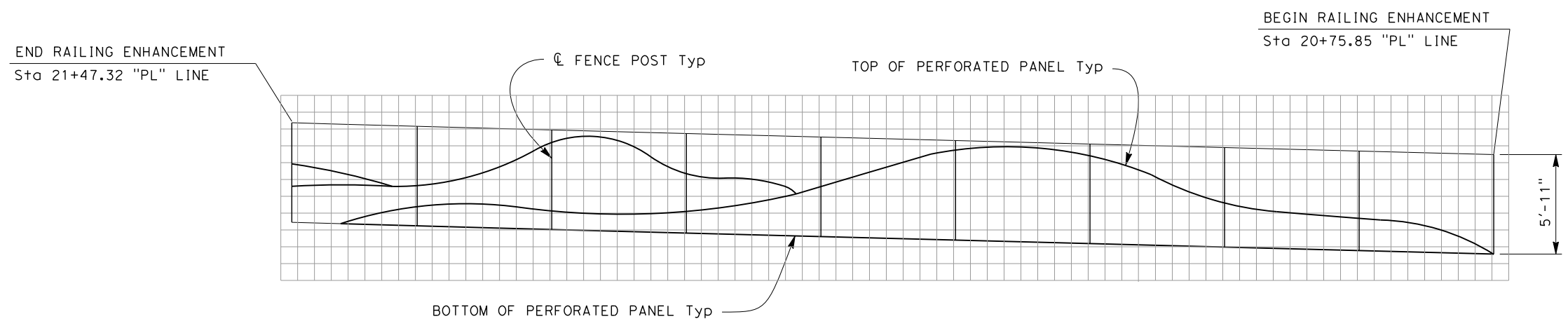
PLANS APPROVAL DATE

*The State of California or its officers or agents shall not be responsible for the accuracy or completeness of electronic copies of this plan sheet.*

CRAIG SHANNON  
No. 66998  
Exp. 9/30/14  
CIVIL  
STATE OF CALIFORNIA

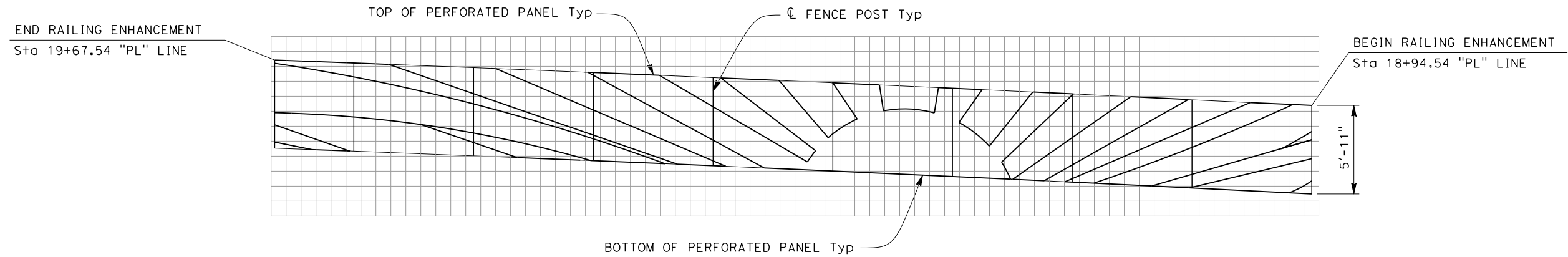
SANDAG  
401 "B" STREET, SUITE 800  
SAN DIEGO, CALIFORNIA 92101

KLEINFELDER | SIMON WONG  
550 WEST C STREET, SUITE 1200  
SAN DIEGO, CALIFORNIA 92101



**EXTERIOR ELEVATION - SEGMENT "C"  
ARCHITECTURAL PANEL TEMPLATE**

1/4" = 10'-0"



**EXTERIOR ELEVATION - SEGMENT "B"  
ARCHITECTURAL PANEL TEMPLATE**

1/4" = 10'-0"

NOTES:

1. A 1'-0" grid is shown for estimating and layout purposes
2. Exposed edges of perforated metal inserts shall be ground smooth prior to galvanizing and painting
3. See "RAILING ELEVATIONS" sheet for more informaton

NOTE:  
THE CONTRACTOR SHALL VERIFY ALL CONTROLLING FIELD DIMENSIONS BEFORE ORDERING OR FABRICATING ANY MATERIAL.

CONTRACT CHANGE ORDER NO. \_\_\_\_\_  
SHEET \_\_\_\_ OF \_\_\_\_

DESIGN OVERSIGHT	DESIGN BY N. Vu	CHECKED C. Shannon	<b>PREPARED FOR THE  STATE OF CALIFORNIA  DEPARTMENT OF TRANSPORTATION</b>	BRIDGE NO. 57-1222	<b>PALOMAR STREET OC (REPLACE)  RAILING DETAILS NO. 2</b>	
SIGN OFF DATE	DETAILS BY T. Brittain	CHECKED C. Cushing		PROJECT ENGINEER Craig Shannon		POST MILES 5.07
DESIGN DETAIL SHEET (ENGLISH) (REV.7/16/10)	QUANTITIES BY N. Vu	CHECKED C. Shannon		UNIT: 2762		CONTRACT NO.: 11-2T1821
ORIGINAL SCALE IN INCHES FOR REDUCED PLANS			0 1 2 3	PROJECT NUMBER & PHASE: 1100020051	DISREGARD PRINTS BEARING EARLIER REVISION DATES	
FILE => 57-1222-za-addrde+06.dgn				REVISION DATES	SHEET OF	

USERNAME => TBRITTAI DATE PLOTTED => 6/19/2014 TIME PLOTTED => 3:26:23 PM

DIST	COUNTY	ROUTE	POST MILES TOTAL PROJECT	SHEET No	TOTAL SHEETS
11	SD	805	4.7/5.6	525G	650

*Craig Shannon* 6-20-14  
 REGISTERED CIVIL ENGINEER DATE

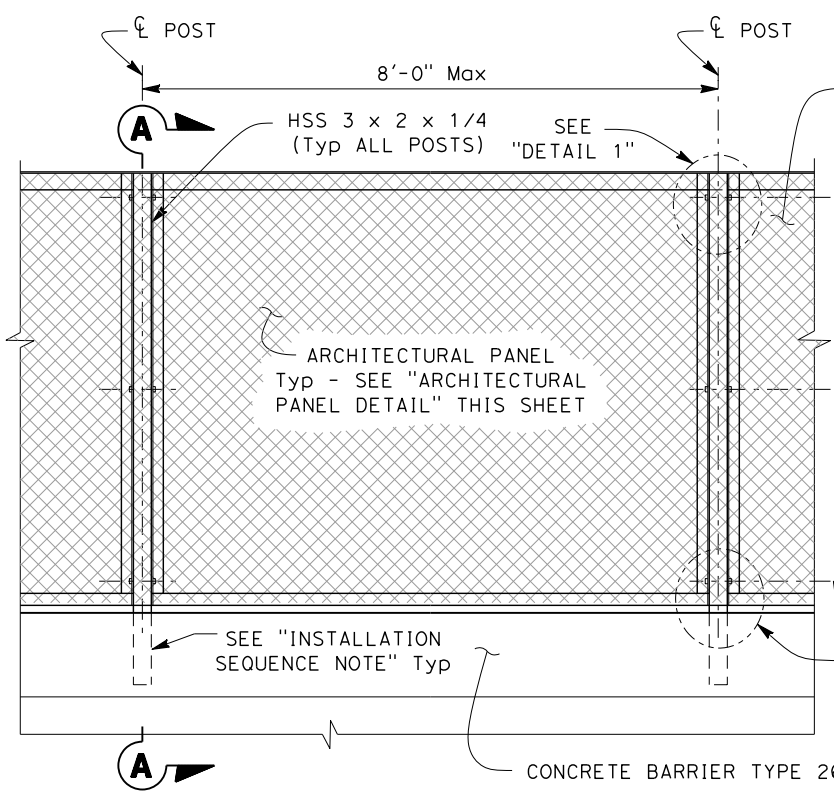
PLANS APPROVAL DATE

*CRAIG SHANNON*  
 No. 66998  
 Exp. 9/30/14  
 CIVIL  
 STATE OF CALIFORNIA

*The State of California or its officers or agents shall not be responsible for the accuracy or completeness of electronic copies of this plan sheet.*

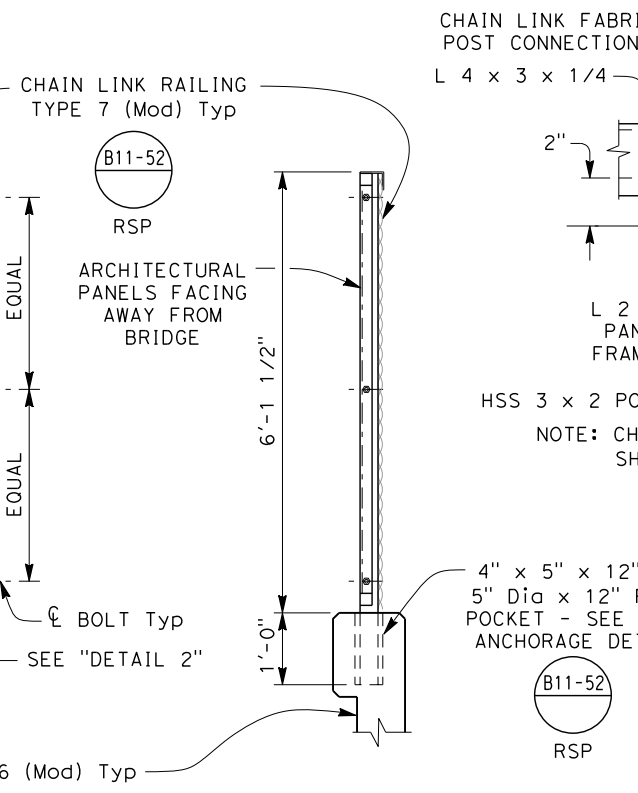
SANDAG  
 401 "B" STREET, SUITE 800  
 SAN DIEGO, CALIFORNIA 92101

KLEINFELDER | SIMON WONG  
 550 WEST C STREET, SUITE 1200  
 SAN DIEGO, CALIFORNIA 92101



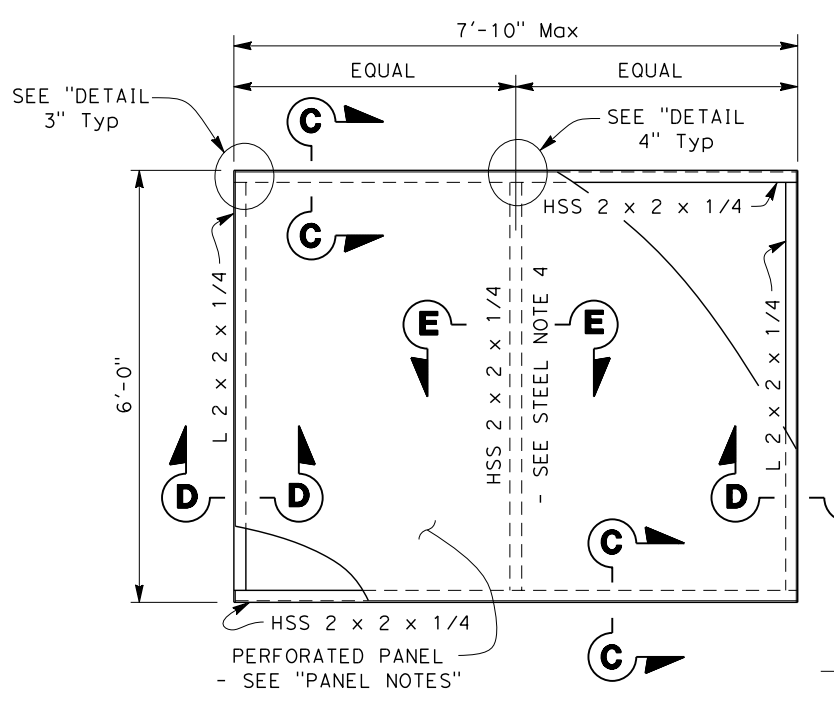
**RAILING ELEVATION**

3/4" = 1'-0"



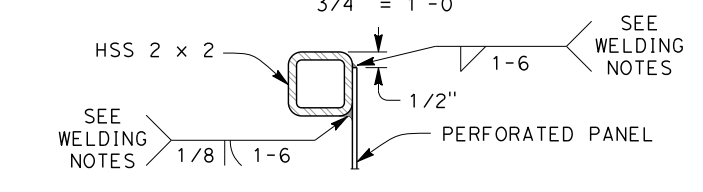
**TYPICAL SECTION A-A**

3/4" = 1'-0"



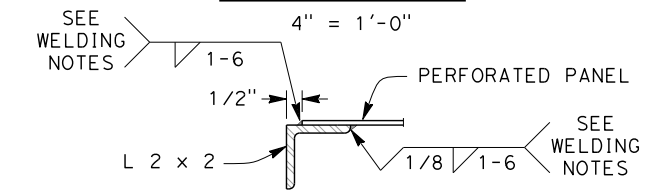
**ARCHITECTURAL PANEL DETAIL**

3/4" = 1'-0"



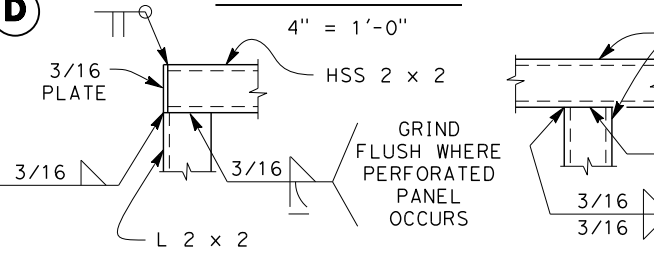
**SECTION C-C**

4" = 1'-0"



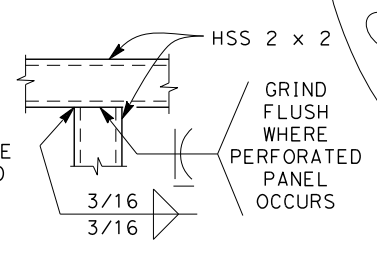
**SECTION D-D**

4" = 1'-0"



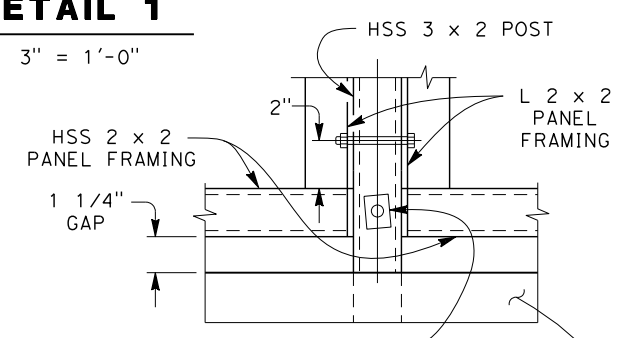
**DETAIL 3**

3" = 1'-0"



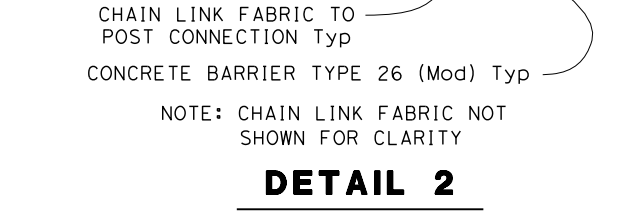
**DETAIL 4**

3" = 1'-0"



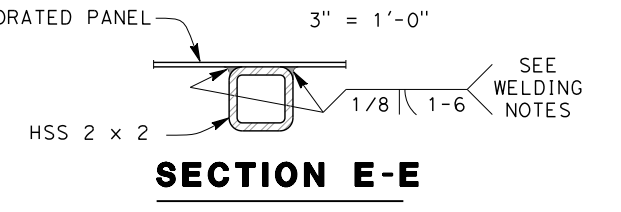
**DETAIL 1**

3" = 1'-0"



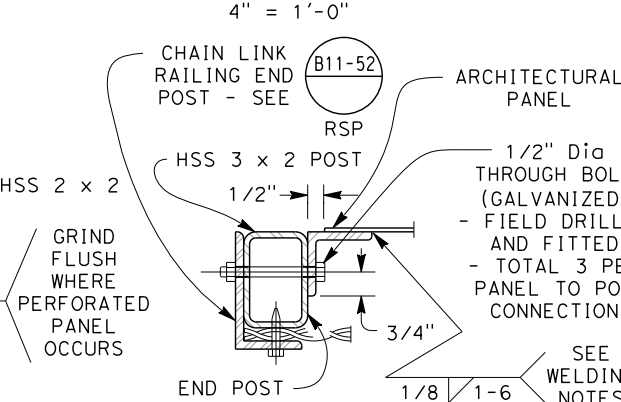
**DETAIL 2**

3" = 1'-0"



**SECTION E-E**

4" = 1'-0"



**END POST CONNECTION DETAIL**

3" = 1'-0"

**PANEL NOTES:**

1. Perforated panels shall be 11 gage, mill finished, plain steel with 1/2 inch Dia holes on 11/16 inch centers, staggered pattern.
2. Perforated panels shall be galvanized and painted per Special Provisions. See "PANEL FINISH LEGEND" on "RAILING ELEVATION NO. 1" and "RAILING ELEVATION NO. 2" sheets for Federal Standard 595 color number.

**STEEL NOTES:**

1. Angles shall conform to ASTM A36. Square and rectangular HSS shall conform to ASTM A500, Grade B (Fy = 46 ksi).
2. Machine bolts shall conform to ASTM A307, Grade A, and shall be galvanized. Nuts for bolts shall conform to ASTM A563 and shall be galvanized.
3. All steel framing components shall be hot-dip galvanized in conformance with ASTM A123. Repair galvanized surfaces per ASTM A780.
4. Intermediate vertical HSS framing member is not required where post spacing is 4'-0" or less.
5. Bolt holes shall be 1/16 inch larger in diameter than nominal size of bolt used.
6. If field drilled holes are required to be oversized, use 3/16 thick galvanized plate washers. Oversized holes shall exceed 1/8 inch larger in diameter than the nominal size of the bolt used.
7. Apply zinc-rich paint on exposed steel surfaces at field drilled holes prior to installation of bolts.
8. Burning of holes in steel members is not permitted.

**WELDING NOTES:**

1. All welding shall be in accordance with the provisions of the American Welding Society (AWS) Code D1.1.
2. All electrode filler material shall be a minimum of E70XX.
3. All welds installed after framing members have been galvanized shall be painted with zinc-rich paint.
4. Where contact length of perforated panel to panel framing is less than 6 inches, provide continuous weld.

**INSTALLATION SEQUENCE NOTE:**

Install architectural panels prior to grouting post base.

CONTRACT CHANGE ORDER NO. \_\_\_\_\_  
 SHEET \_\_\_\_ OF \_\_\_\_

NOTE:  
 THE CONTRACTOR SHALL VERIFY ALL CONTROLLING FIELD DIMENSIONS BEFORE ORDERING OR FABRICATING ANY MATERIAL.

DESIGN OVERSIGHT	
SIGN OFF DATE	

DESIGN	BY N. Vu	CHECKED C. Shannon
DETAILS	BY T. Brittain	CHECKED C. Cushing
QUANTITIES	BY N. Vu	CHECKED C. Shannon

**PREPARED FOR THE STATE OF CALIFORNIA DEPARTMENT OF TRANSPORTATION**

Craig Shannon  
 PROJECT ENGINEER

BRIDGE NO.	57-1222
POST MILES	5.07

**PALOMAR STREET OC (REPLACE) RAILING DETAILS NO. 3**

USERNAME => tbr11101 DATE PLOTTED => 6/19/2014 TIME PLOTTED => 3:28:57 PM