

Master Plan for Strata Park at



MILLENNIA

Sheet Index:

Master Plan	1
Southeast View from Northwest Corner	2
Park Description, Program and Activities	3
Plant Palette	4
Site Furnishing and Lighting	5
Shade Shelter and Play Equipment	6
Comfort Station Plan	7
Comfort Station Elevations	8
Comfort Station Rendering	9
Paving and Signage	10



Description:

Strata Park is an urban park located in the southeast neighborhood of Millenia. The design of Strata Park is built upon the theme of "Cycles" as discussed in the EUC Urban Parks, Recreation, Open Space and Trails Plan; cycles of energy, nature, and community. Through the use of site features, park elements, vegetation, and building materials, the theme of "Cycles" will resonate throughout the park.

Parks are integral to the creation of communities and cycle of community connection. The park design utilizes circular shapes to convey movement and the energy theme of cycles, which greatly contributes to the sense of place. The connected circular shapes create different but related areas for various activities. The orientation of the park will provide a connection to the adjacent streets in a way that allows clear lines of sight into the park for safety and security, while also creating a sense of enclosure. The design of Strata Park is complimentary to the other parks so they feel part of larger whole but still iconic and reflective of the neighborhood that will emerge around it. The Chula Vista Regional Trail weaves through the center of the park, providing a connection to the greater Chula Vista community and region.

The cycle of energy through sustainability is a key aspect of Strata Park in support of Millenia's designation as a LEED ND community. Site features including stormwater collection and filtration through bioswales, sustainable building and hardscape materials, recycled glass in the Regional Trail paving, shade over paving to reduce heat island affect, and bicycle facilities.

Plant material will provide continuous color and interest year round. The proposed plant palette will coincide with the cycle of the seasons, providing beauty and visual interest every month of the year.

Program:

- Water Feature
- Restroom Building including storage
- Children's play area
- Enclosed dog area for large and small dogs
- Shade structures with picnic table and seating
- Bicycle racks and trash receptacles
- Seating/play terraces
- Flexible use spaces both paved and turf
- Integral art elements in wall and paving
- Direct pedestrian connections to the adjacent neighborhood
- Inclusion of the regional trail segment with interpretive signage
- Planted bioswales for water quality and aesthetic purposes
- Decorative, low water use shrub and ground cover planting
- A variety of shade trees and flowering trees
- Lighting for walkways using a variety of low energy use light fixtures
- Designated on-street parking for parks maintenance vehicles
- On-street parking only- The concept for Millenia's parks and plazas is that they are within a walkable distance of homes and businesses. Therefore no on-site parking is proposed. There is on-street parking on adjacent streets. The 'urban parks' and some 'neighborhood parks' in the Chula Vista City-wide Park and Recreation Master Plan have the same approach to parking.

Anticipated Activities:

Central Plaza and Secondary Plaza

- Farmer's Market
- Tai Chi / Morning Yoga Workout
- Live Music
- Arts Festival
- Sidewalk Street Games
- Beer Garden
- Outdoor Movie Night (possibly)
- Performance Art
- Children's Shows
- Dance Classes
- Corporate Barbecue Event Staging
- Sidewalk Chalk Art
- Weddings and Wedding Receptions

Picnic / Shelter Area (Northeast area)

- Birthday Parties
- Small Company Picnic
- Family Gatherings/Reunions
- Day Camp Field Trip
- Cycling Club Barbecue
- Crafting Party
- Hawaiian Luau
- Neighborhood Carnival
- Book Club Meeting
- Kid's Scavenger Hunt
- Mom's Club Gatherings
- Easter Egg Hunt

Strata Park

Plant Palette

Spring



Summer



Fall

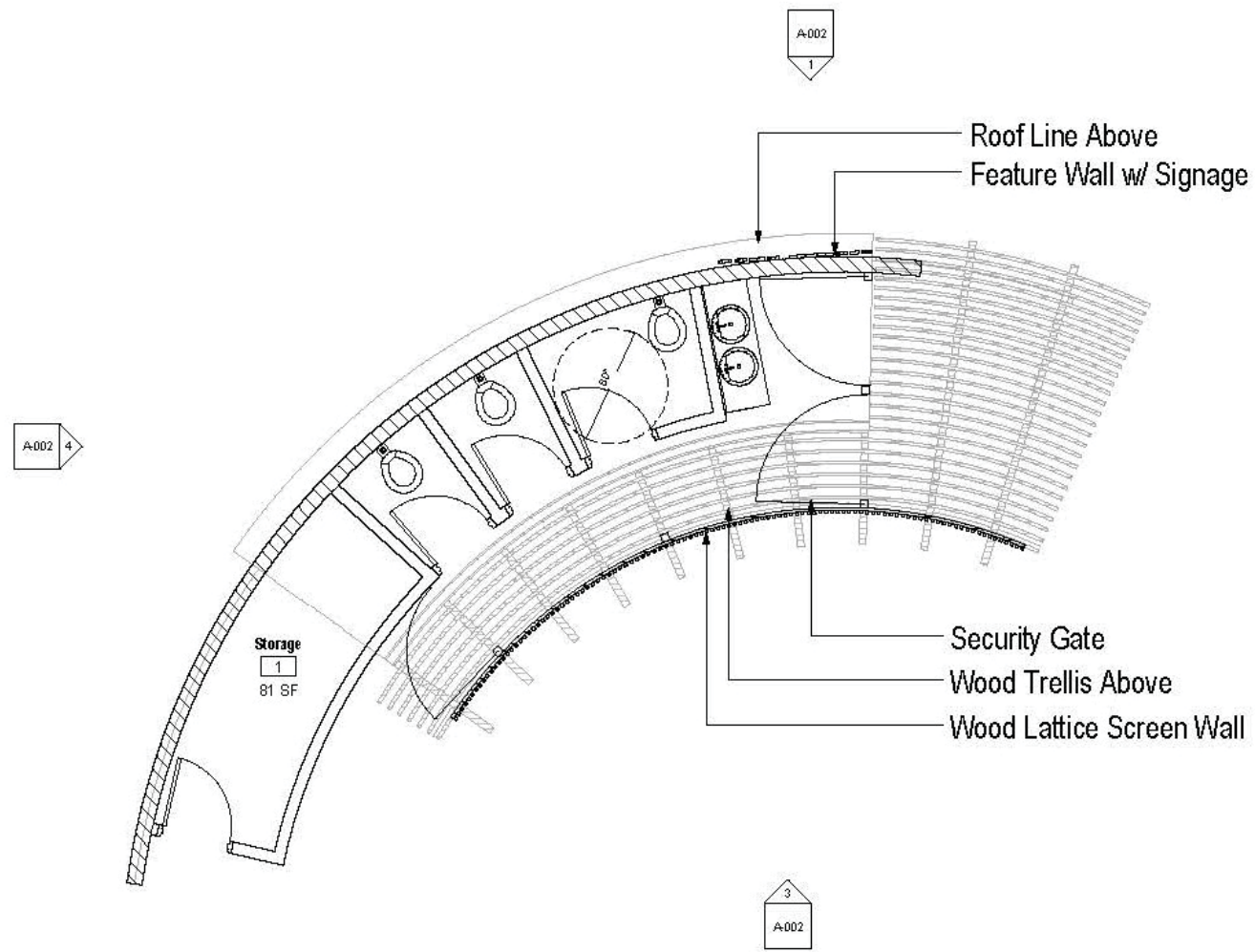


Winter

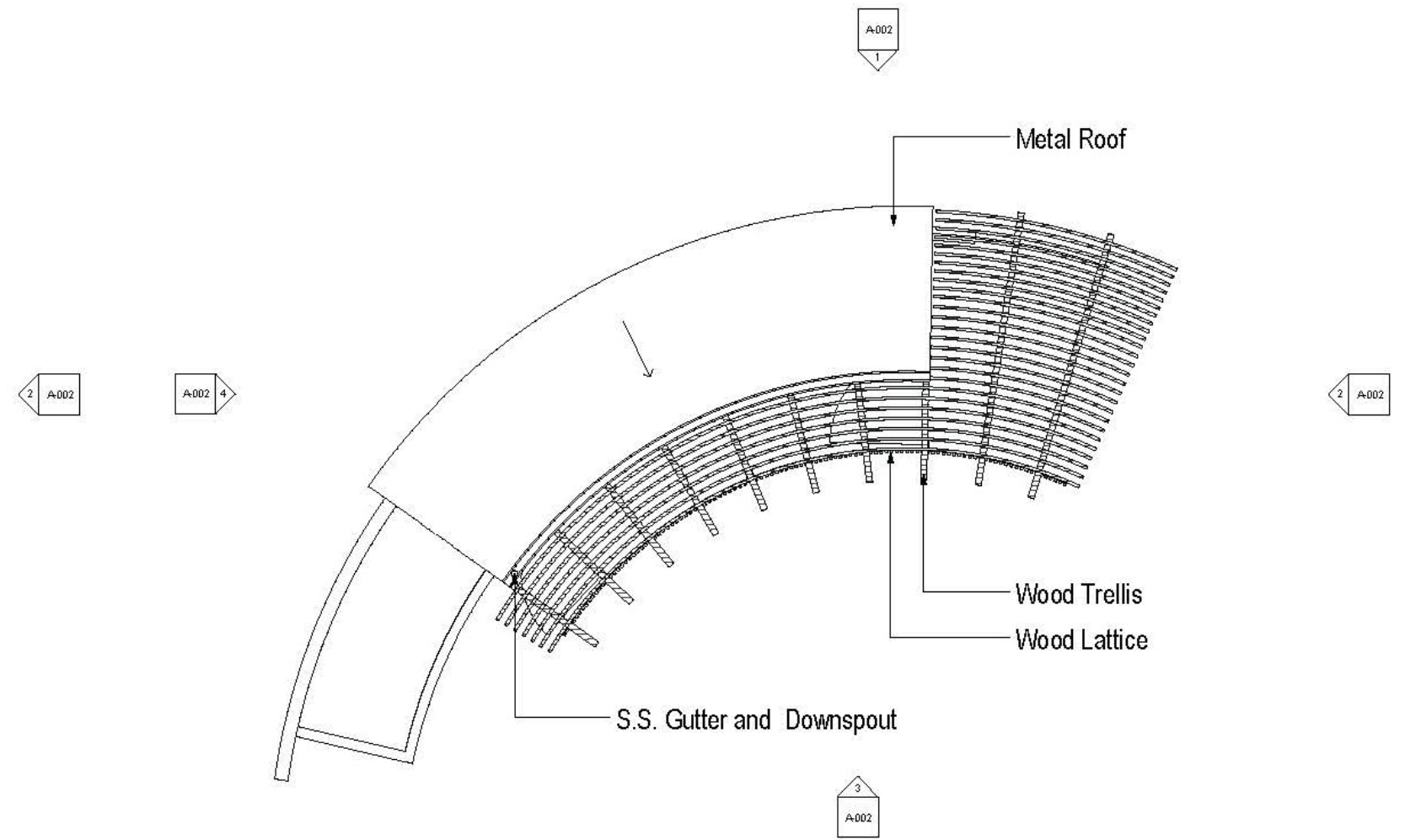








① Floor Plan
1/4" = 1'-0"



② Roof
1/4" = 1'-0"



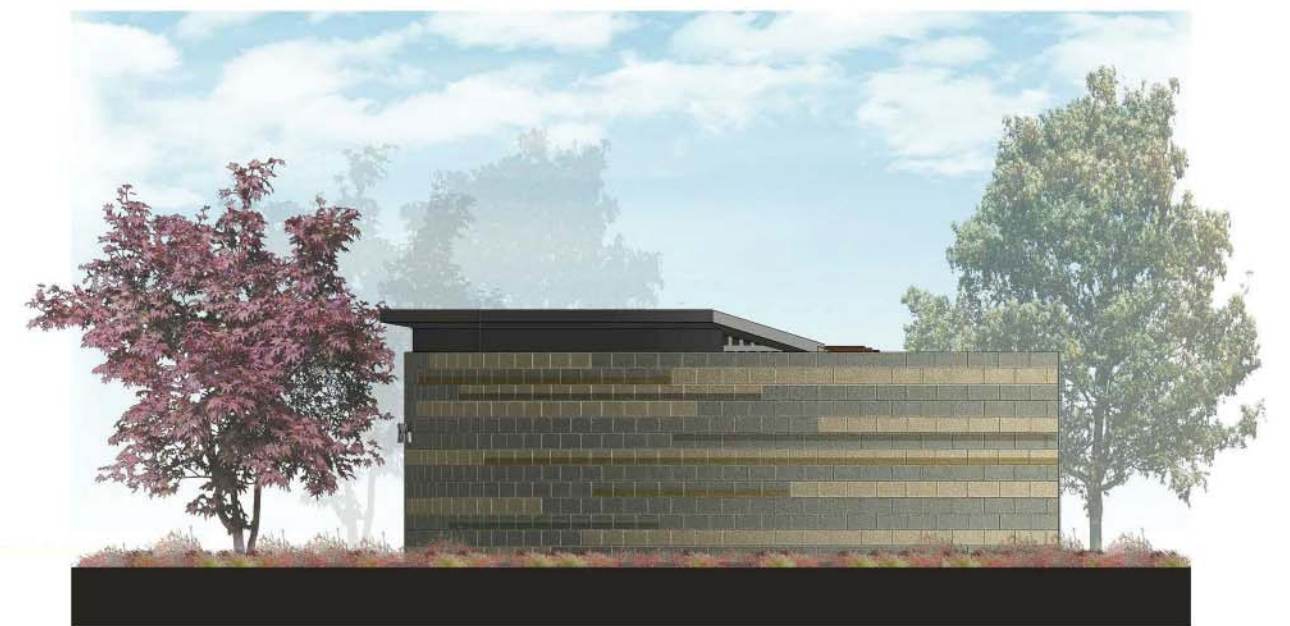
① North Elevation
1/4" = 1'-0"



② East Elevation
1/4" = 1'-0"

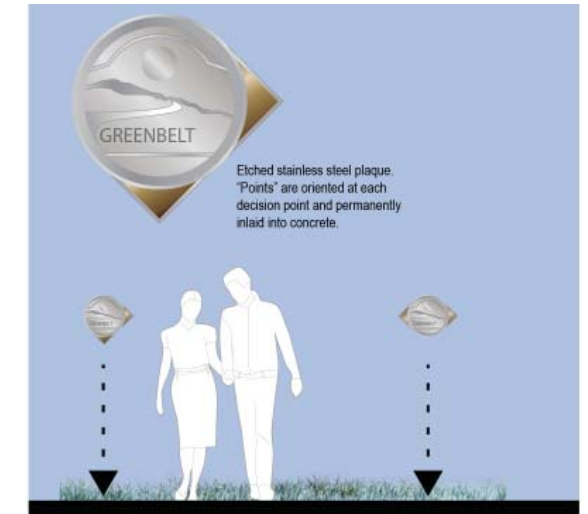


③ South Elevation
1/4" = 1'-0"

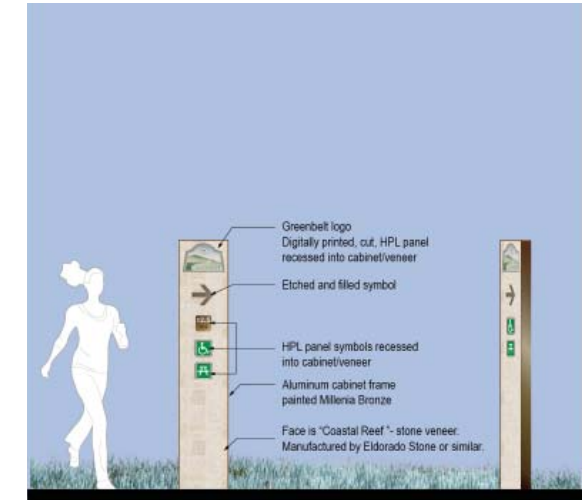
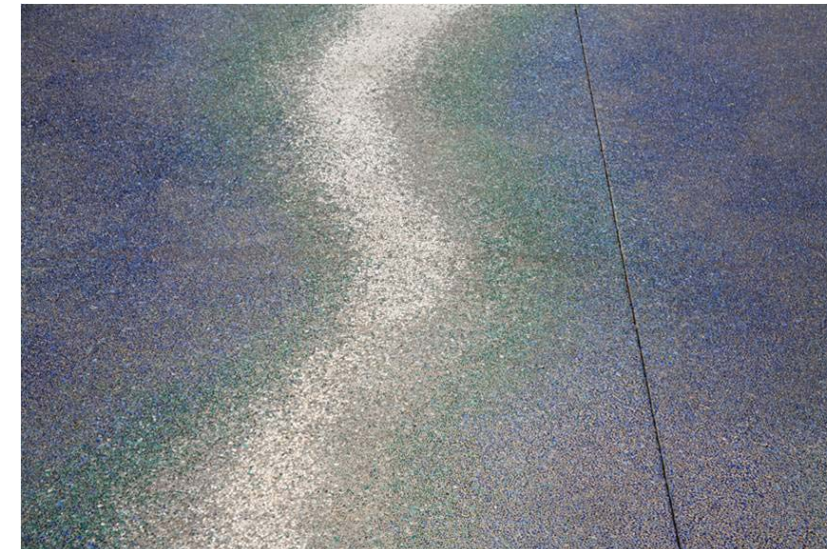


④ West Elevation
1/4" = 1'-0"

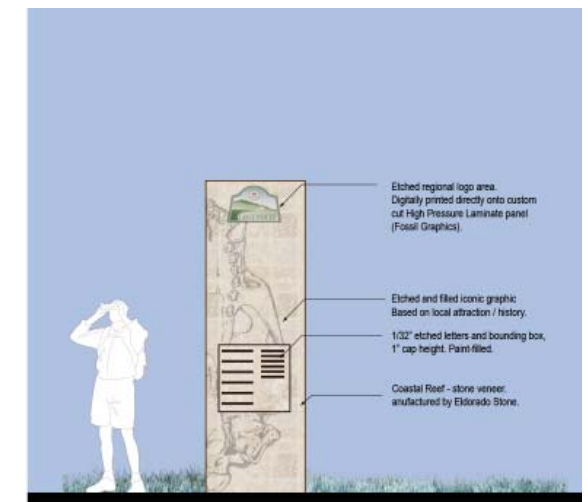




Regional Trail Marker



Regional Trail Directional Signage



Trail Interpretive