

LOVINA

OTAY RANCH VILLAGE 2

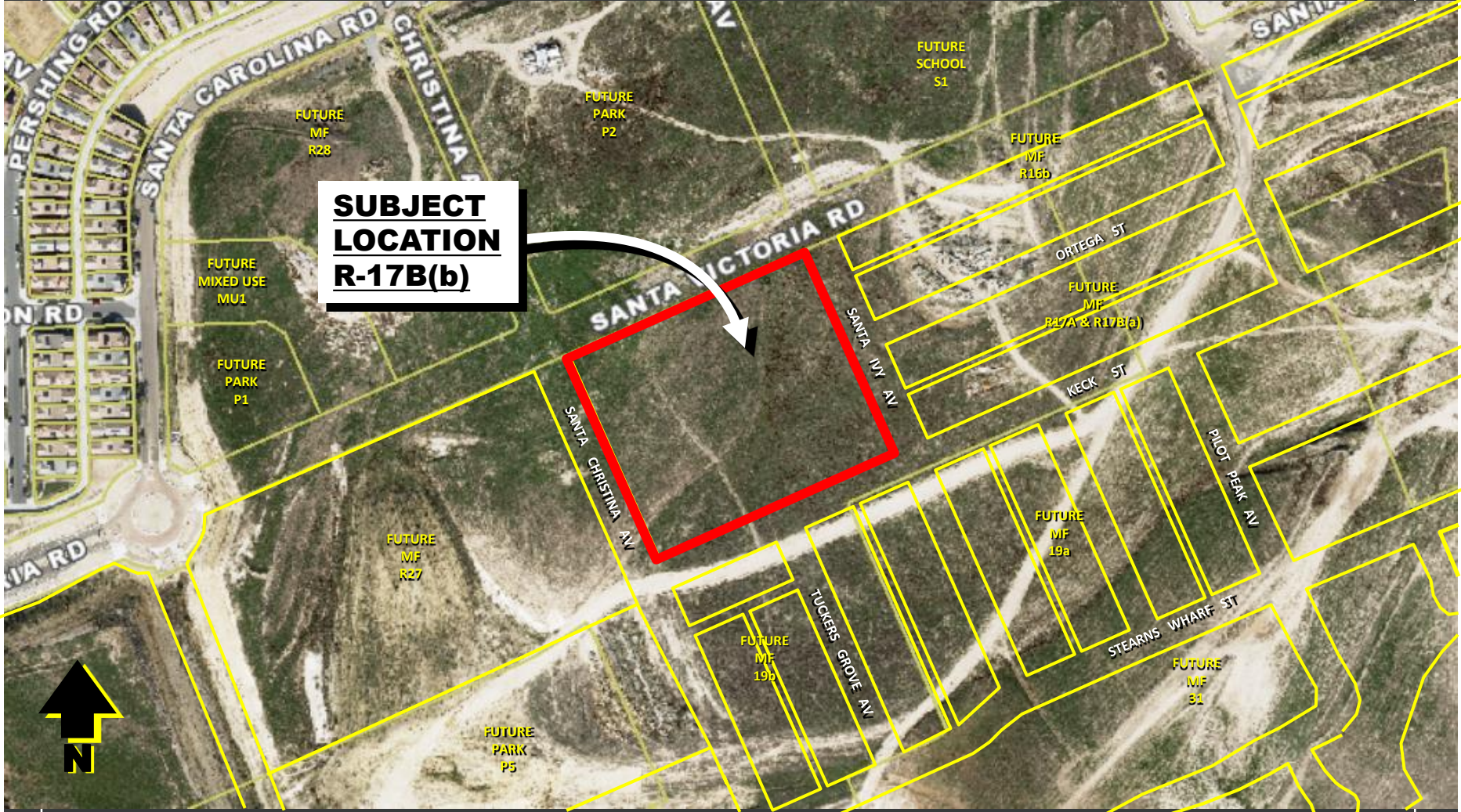
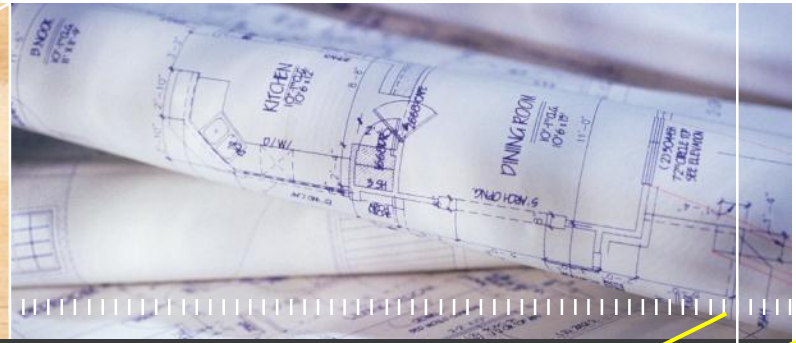
R17B(B): DR15-0024

AUGUST 9, 2016

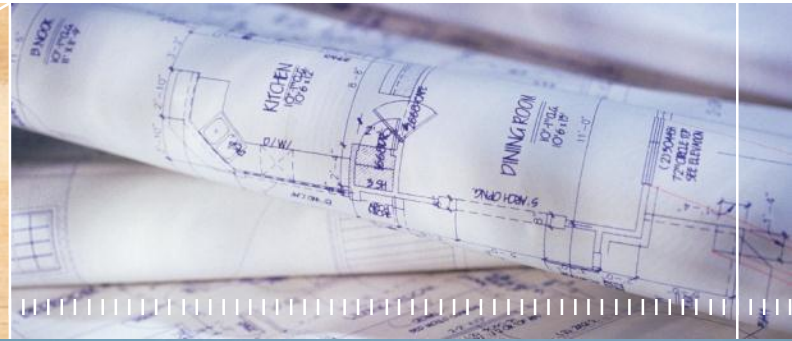


DEVELOPMENT SERVICES DEPARTMENT



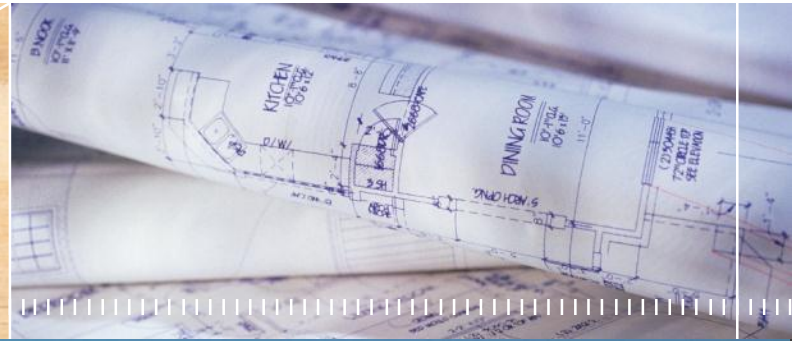


**SUBJECT
LOCATION
R-17B(b)**



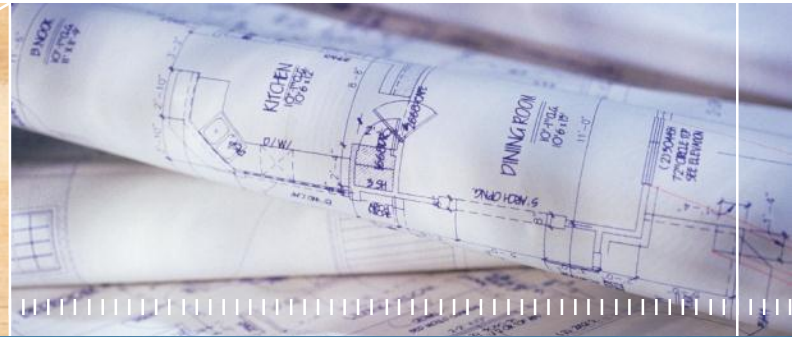
Looking East From Site





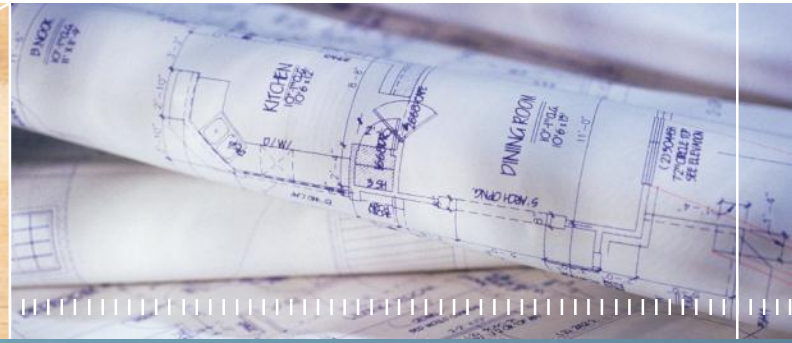
Looking West From Site





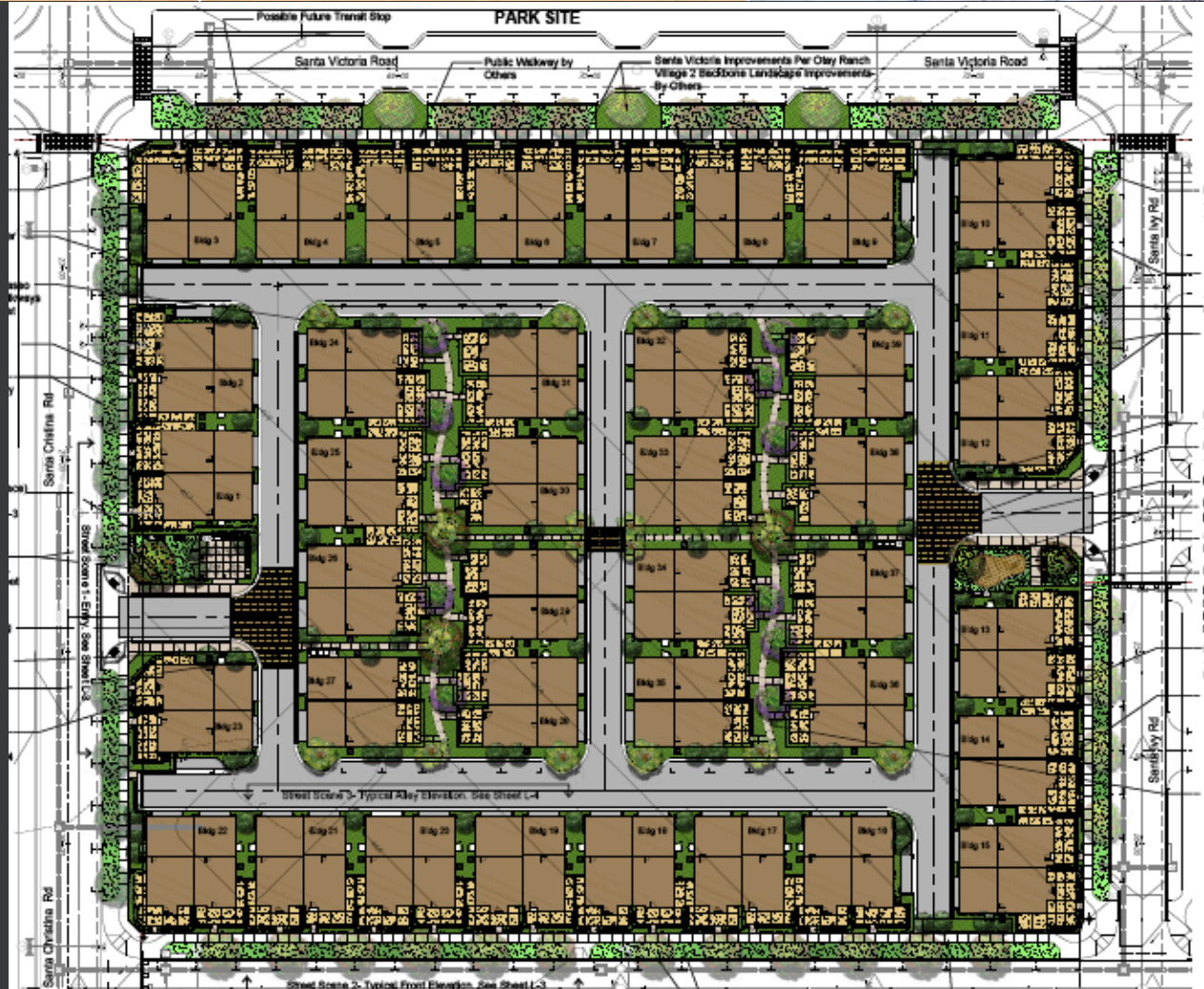
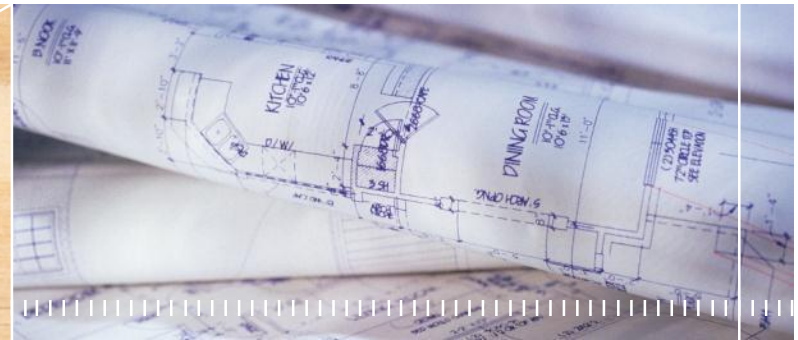
Looking North From Site

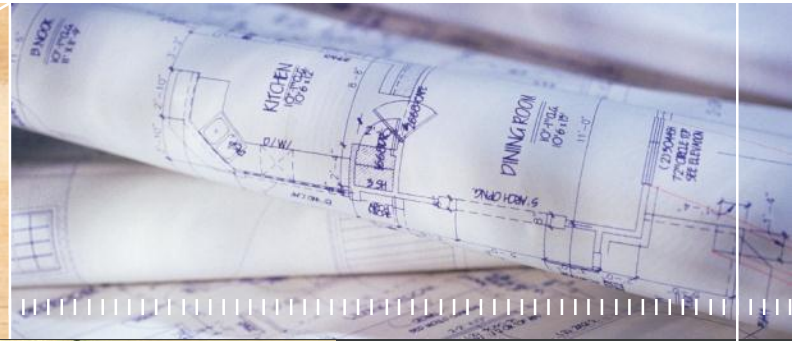




Looking South From Site







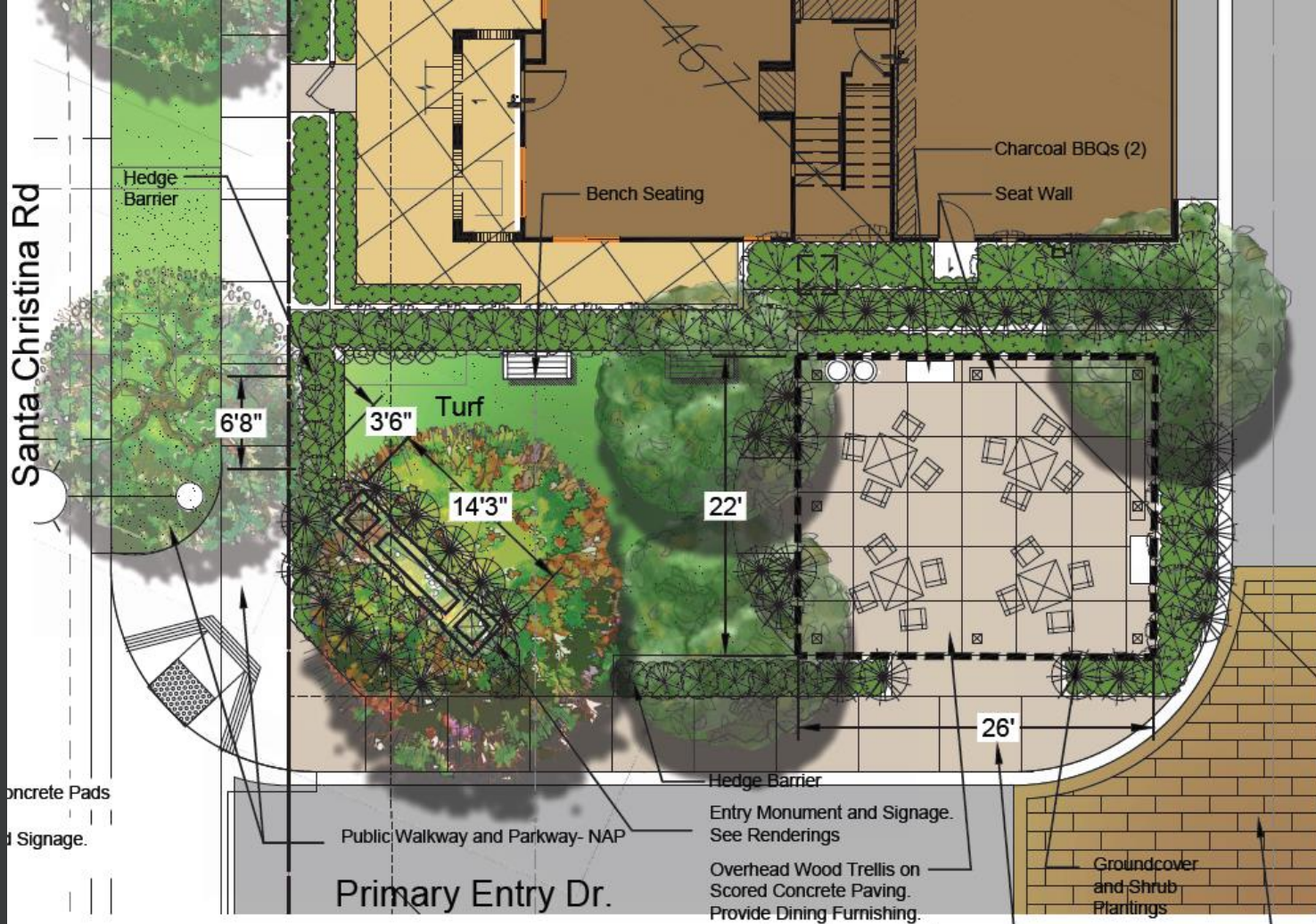
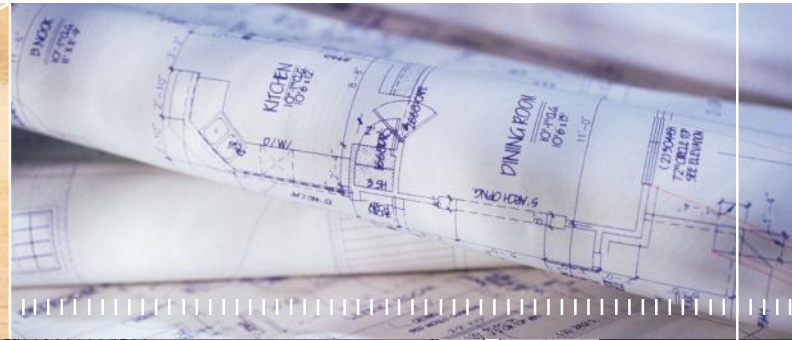
Lovina Primary Entry Monument and Park (Off Santa Chrisitna Rd.)

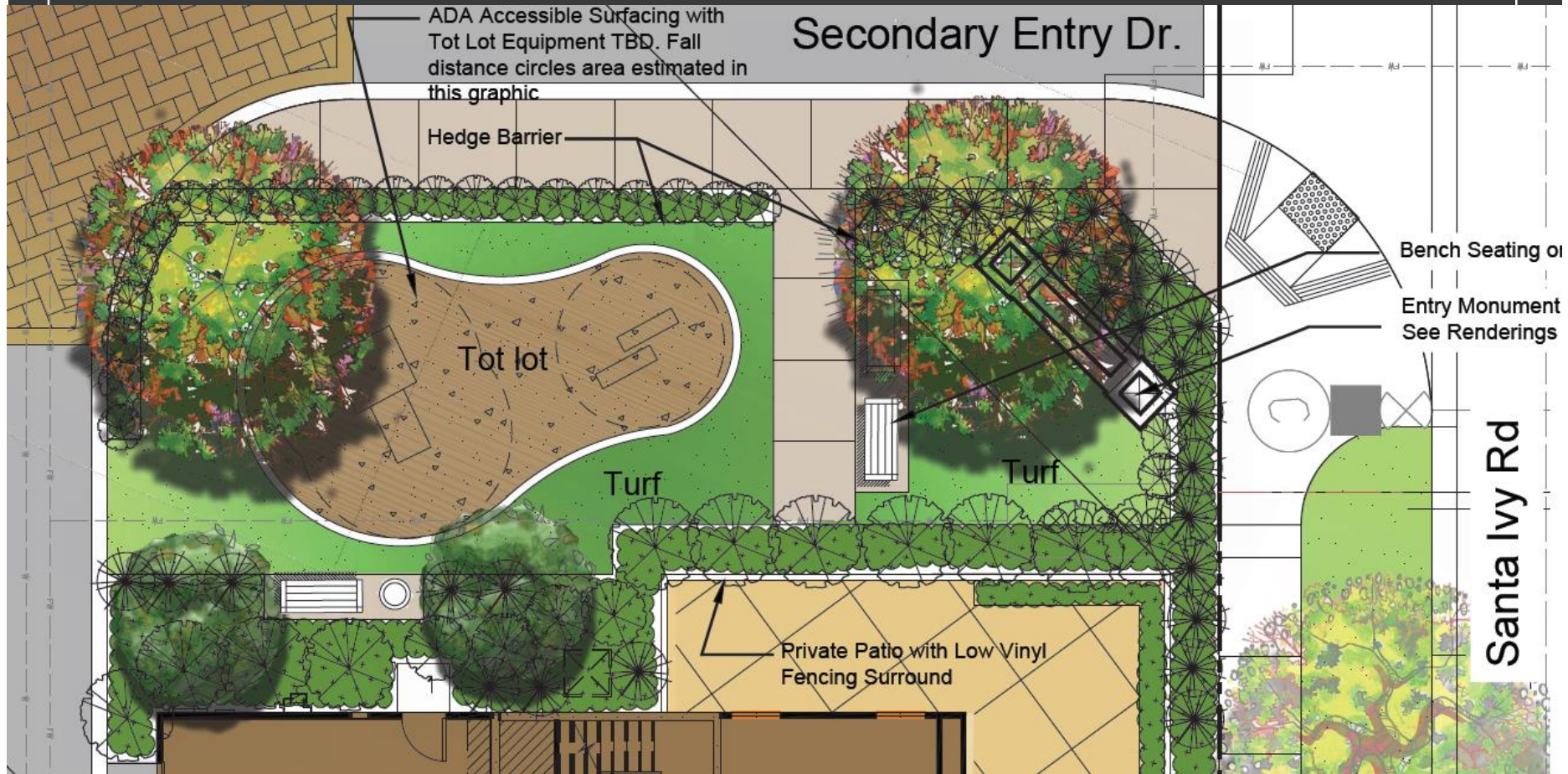
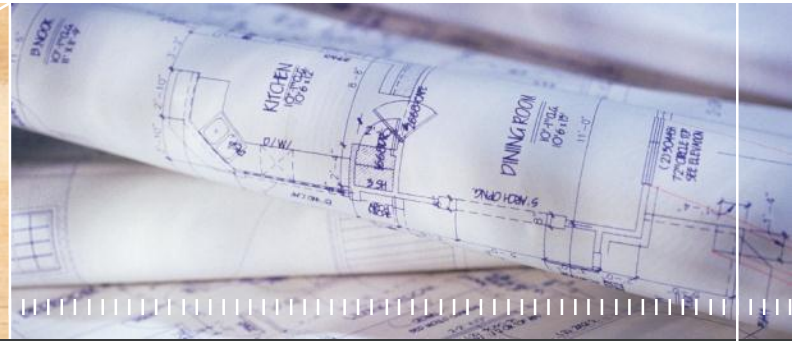


Lovina Primary Entry Monument and Park (Off Santa Chrisitna Rd.)



Lovina Primary Entry Monument and Park (Off Santa Chrisitna Rd.)



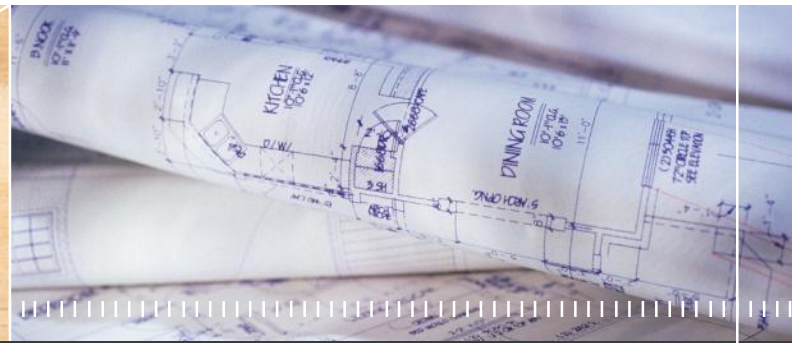


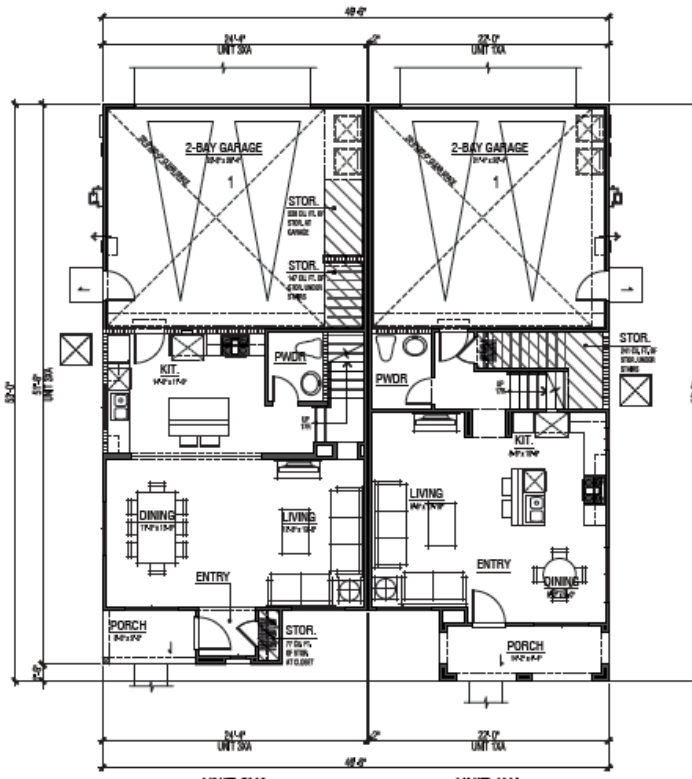
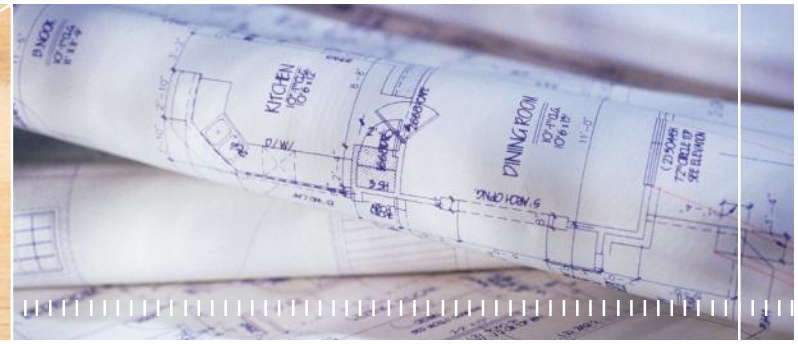


SPANISH ECLECTIC

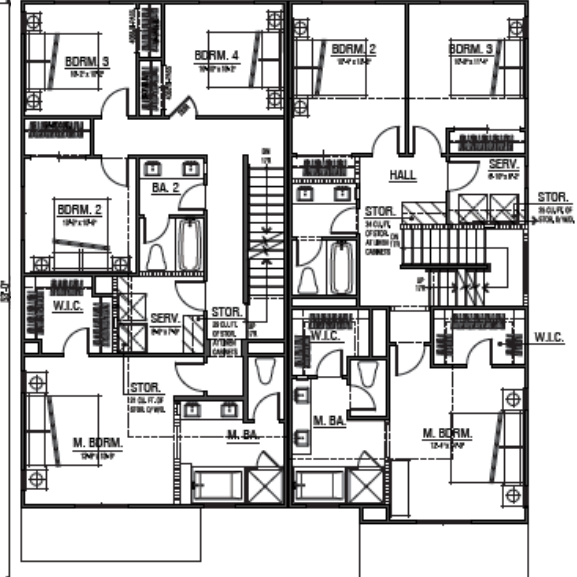


TUSCAN

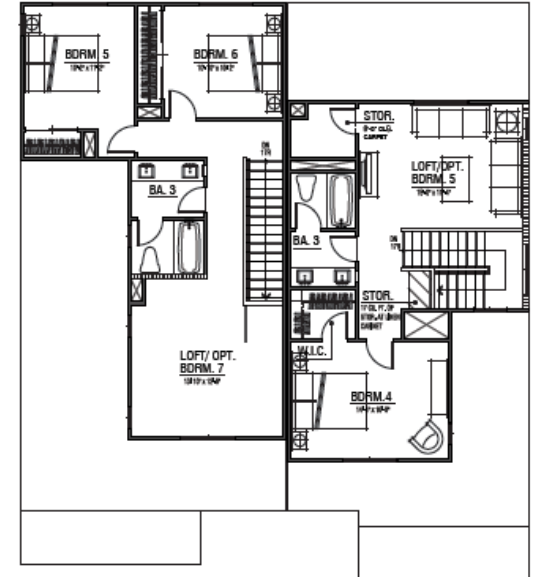




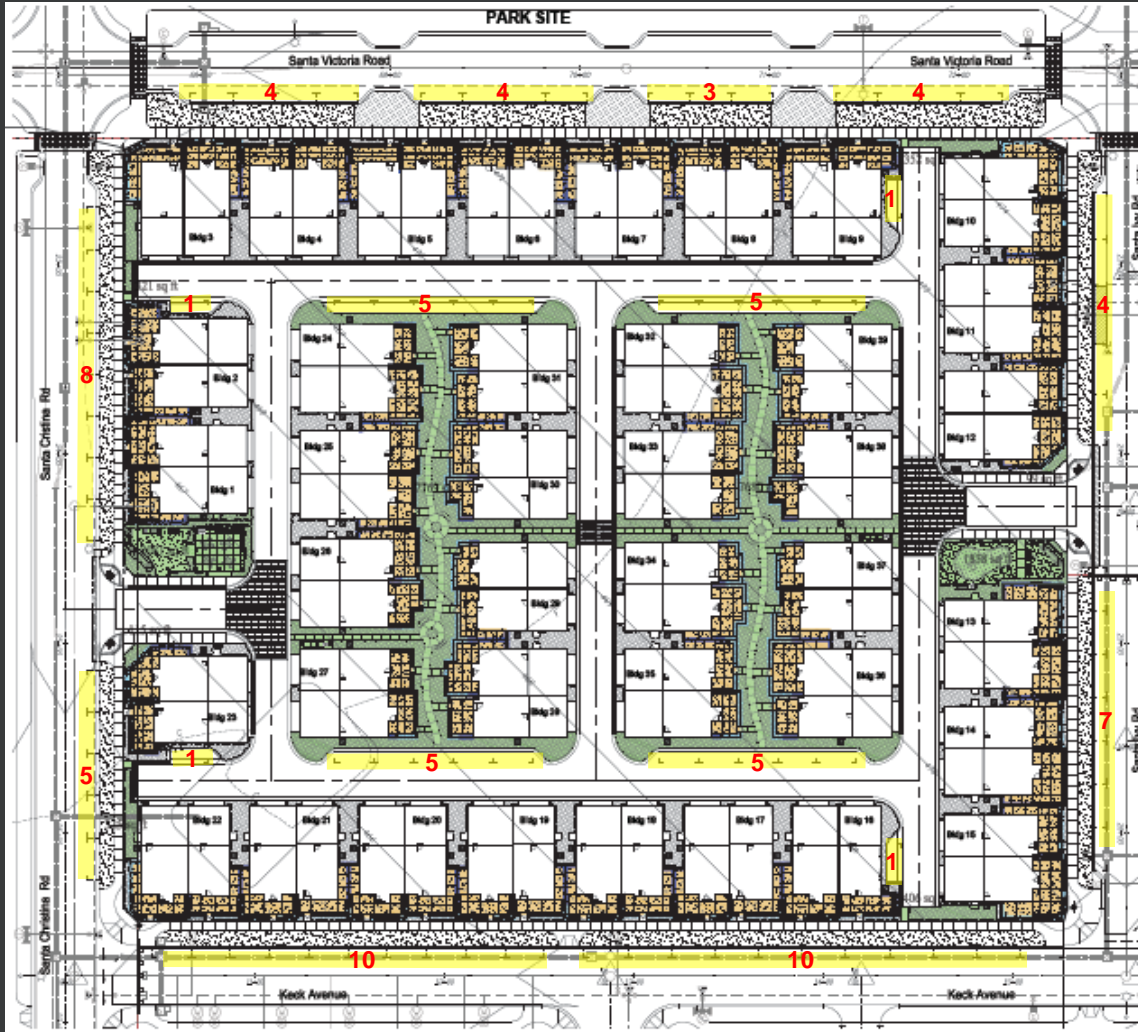
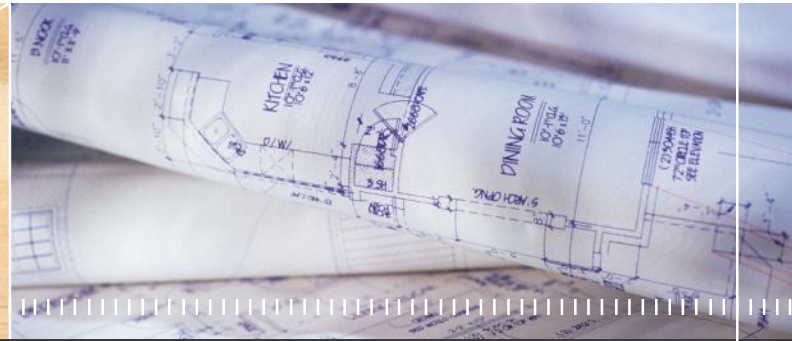
UNIT 3XA UNIT 1XA
FIRST LEVEL COMPOSITE FLOOR PLAN

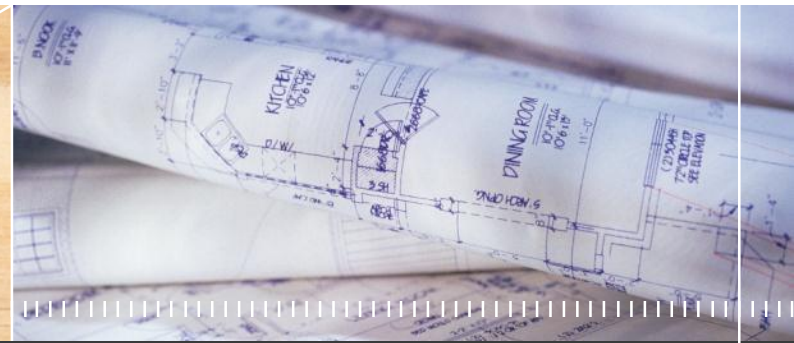


UNIT 3XA UNIT 1XA
SECOND LEVEL COMPOSITE FLOOR PLAN



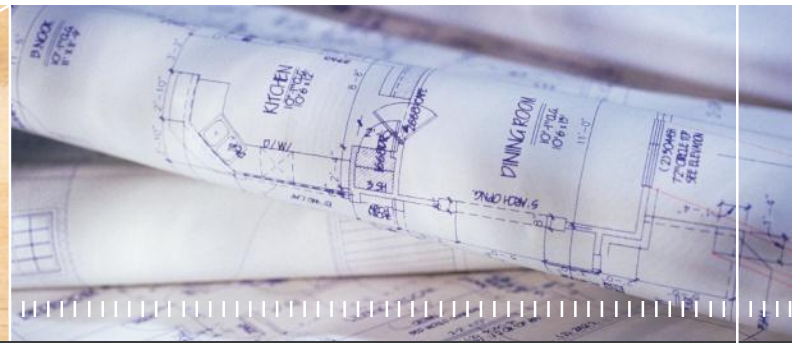
UNIT 3XA UNIT 1XA
THIRD LEVEL COMPOSITE FLOOR PLAN

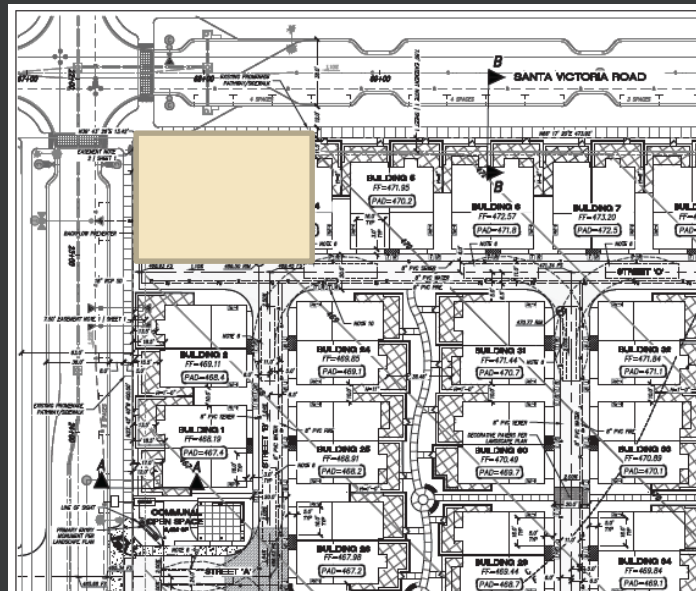
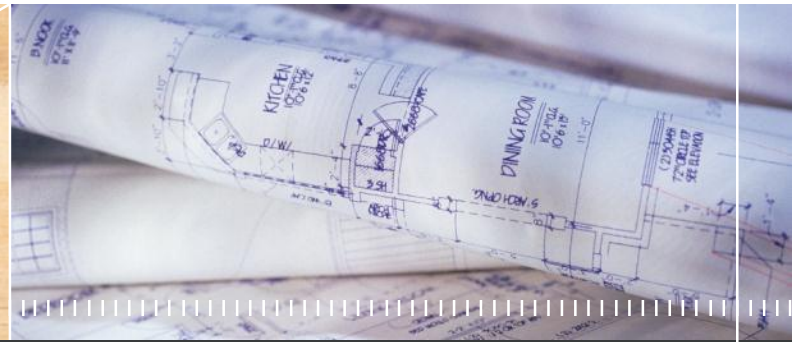


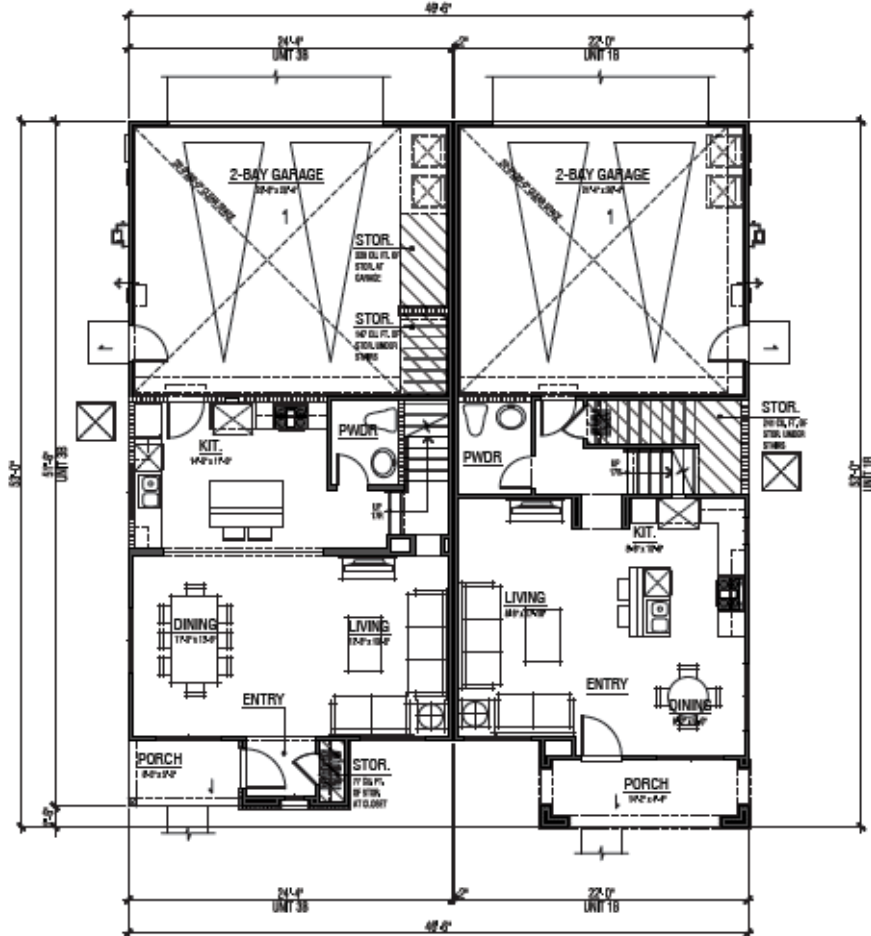
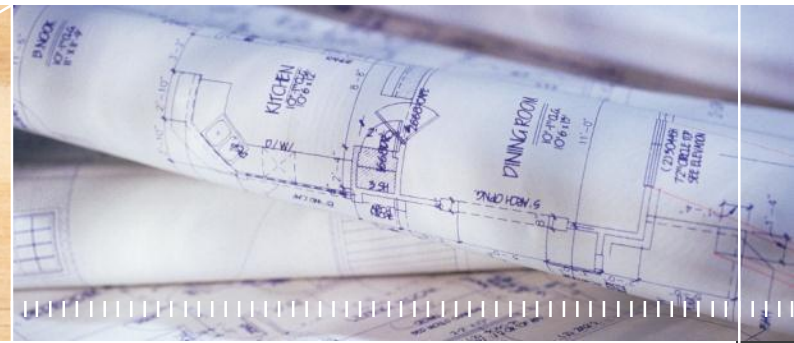


CONCLUSION

Staff recommends that the City Council adopt the resolution approving Design Review Permit, DR15-0024 subject to the conditions in the resolution.

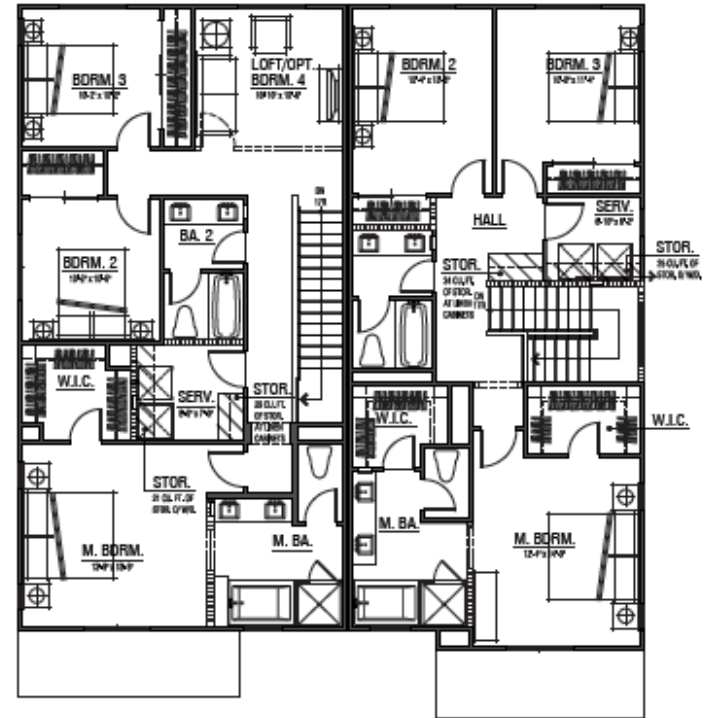






UNIT 3B UNIT 1B

FIRST LEVEL COMPOSITE FLOOR PLAN



UNIT 3B UNIT 1B

SECOND LEVEL COMPOSITE FLOOR PLAN

