



Performing Arts Center (PAC)





Elevation Views

- LARGE SYMBOL ON THE BUILDING EXTERIOR IS A MODERN INTERPRETATION OF THE MAYAN SUN... A SYMBOL OF ASCENSION, CLARITY AND AWARENESS
- THIS VIEW IS FACING EAST



From Otay Lakes Road



From The Wellness And Aquatics Complex





Elevations



View From The Adjacent Parking Lot



View From The Campus Ring Road





Ground Level Floor Plan

MAIN THEATRE CAPACITY: 500 SEATS

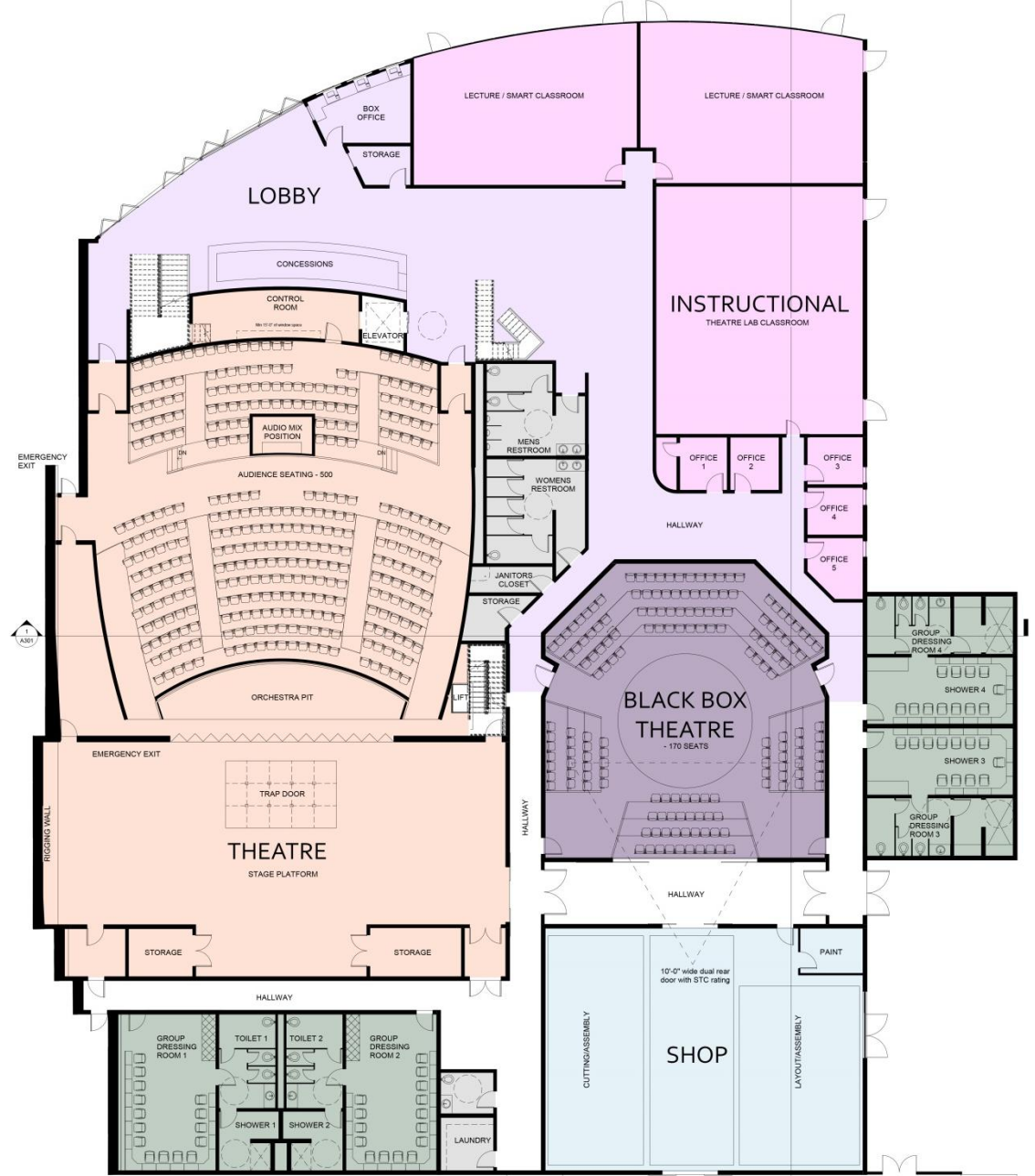
BLACK BOX CAPACITY: 151 SEATS

CLASSROOMS

- 1 THEATRE LABORATORY
- 2 "SMART" CLASSROOMS

SCENE SHOP AREA: 2,285 SF

SCENE/PROP STORAGE: 3,072 SF

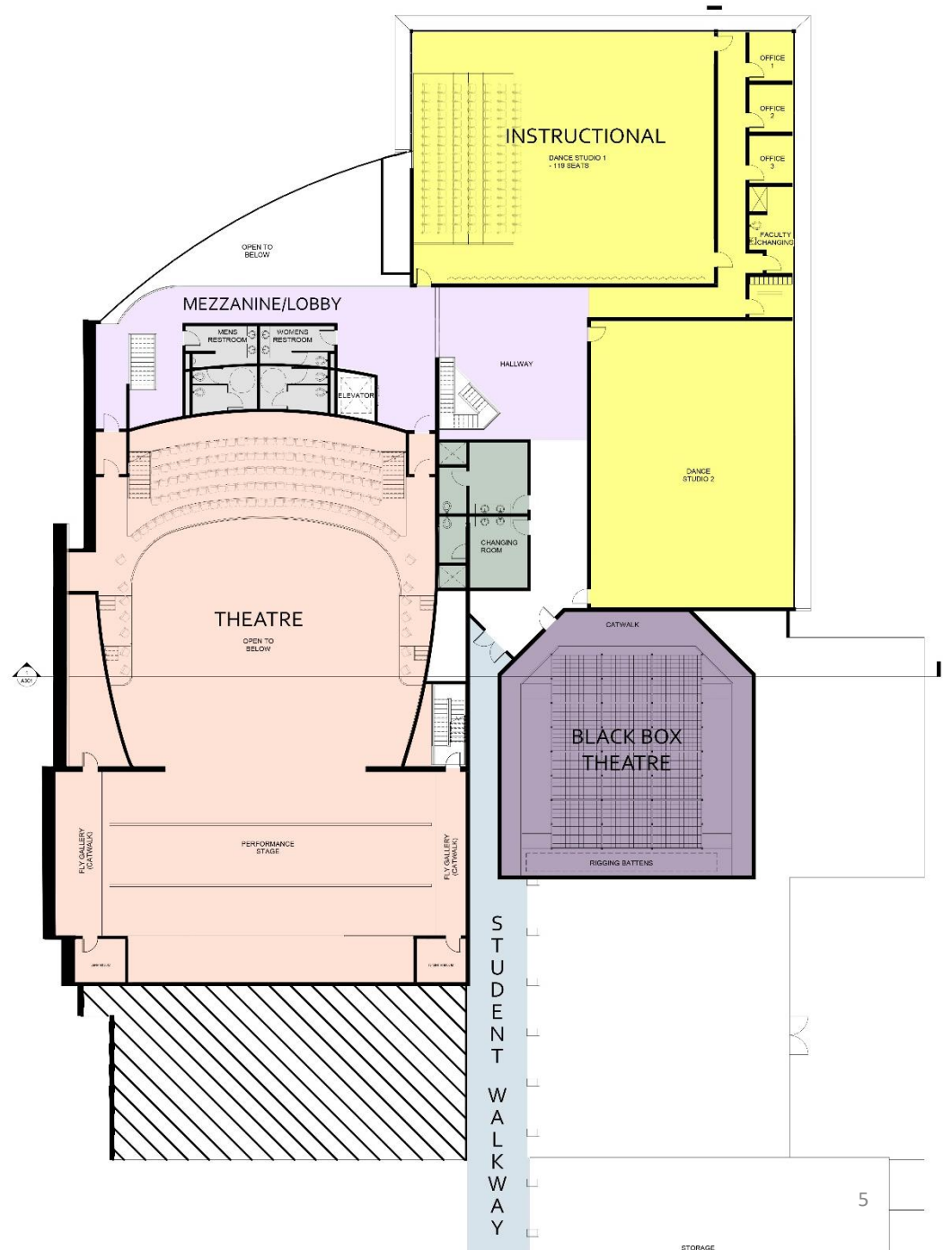




Level Two Floor Plan

TWO DANCE STUDIOS

- DANCE STUDIO 1
AUDIENCE SEATING: 105
STUDENTS: 40
- DANCE STUDIO 2
STUDENTS: 40





Projected Budget and Schedule

"Brick and Mortar" Construction	\$44M
Construction Management	\$3.5M
Contingencies	\$2.2M
Testing, Inspection, Other	\$2.2M
Furniture and Equipment	<u>\$0.8M</u>
	\$52.7M

	2018			2019				2020	
	Q2	Q3	Q4	Q1	Q2	Q3	Q4	Q1	Q2
Construction	■								
Commissioning								■	
Furnish and Occupy									■



Corner Lot Site Plan

- THIS 48,576 SF FACILITY COMPLETES THE CORNER LOT DEVELOPMENT
- THE BUILDING ENTRANCE FACING OTAY LAKES ROAD SHARES AN EVENT PLAZA WITH THE WELLNESS AND AQUATICS COMPLEX
- PARKING IS ADJACENT TO THE FACILITY

Electronic Monument Sign



Outdoor Amphitheatre





Electronic Monument Sign

Corner of H Street
and Otay Lakes Road



Progress to Date

