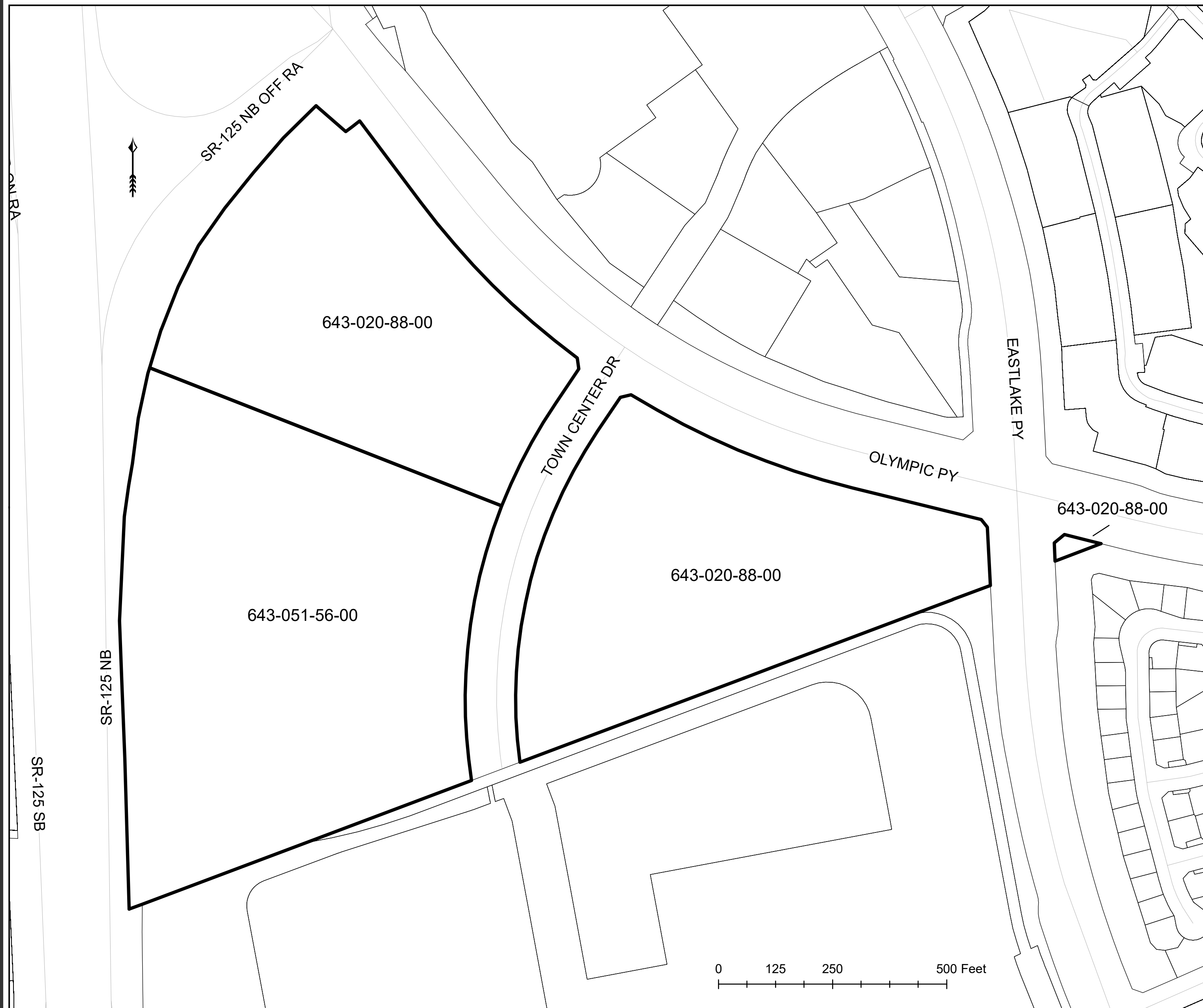


PROPOSED BOUNDARIES OF COMMUNITY FACILITIES DISTRICT NO. 19M (FREEWAY COMMERCIAL 2)

CITY OF CHULA VISTA
COUNTY OF SAN DIEGO
STATE OF CALIFORNIA



FILED IN THE OFFICE OF THE CITY CLERK OF THE CITY OF CHULA VISTA THIS ____ DAY OF _____, 201__.

CITY CLERK
CITY OF CHULA VISTA
SAN DIEGO COUNTY, CALIFORNIA

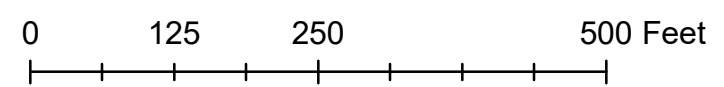
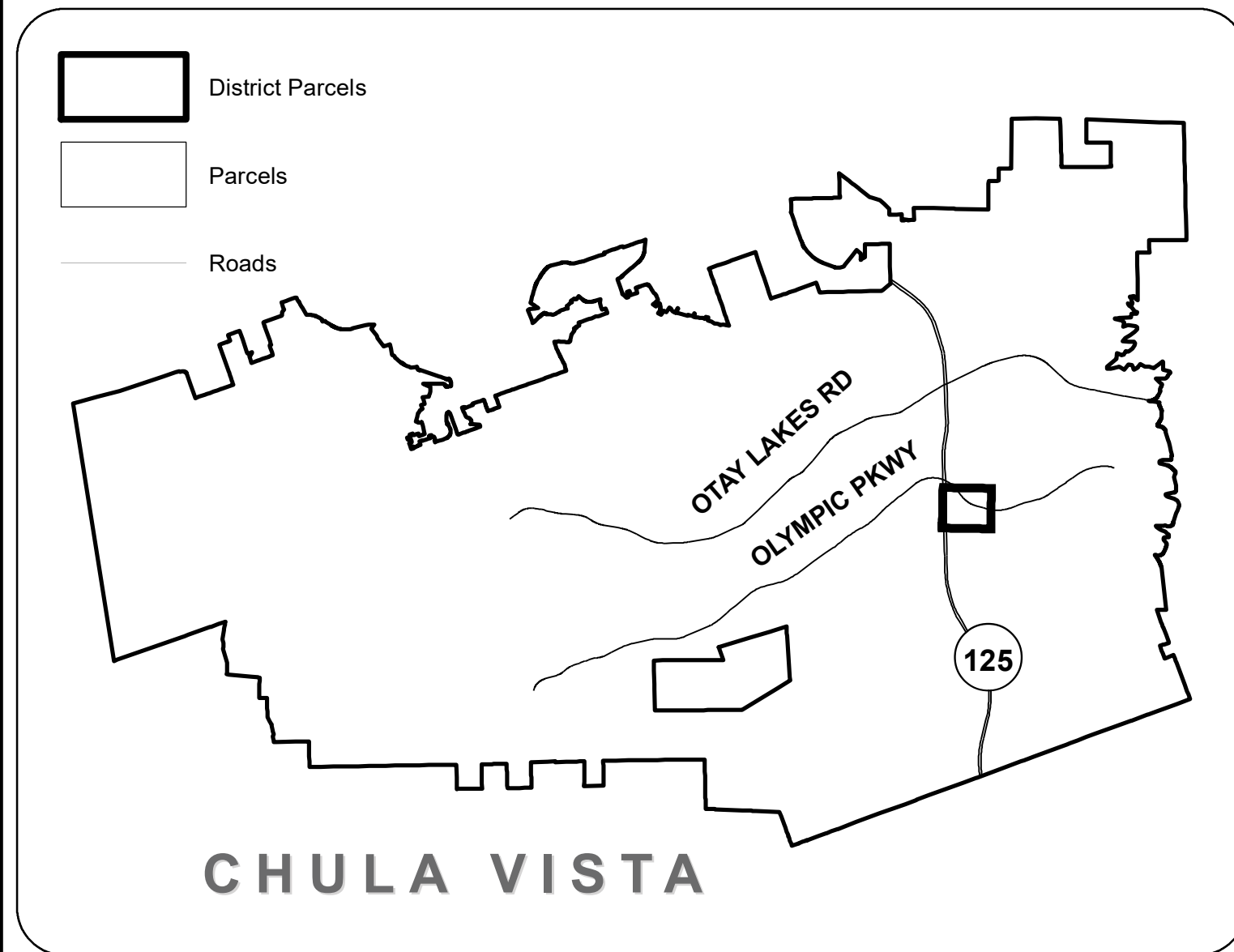
I HEREBY CERTIFY THAT THE WITHIN MAP SHOWING PROPOSED BOUNDARIES OF COMMUNITY FACILITIES DISTRICT NO. 19M (FREEWAY COMMERCIAL 2), CITY OF CHULA VISTA, COUNTY OF SAN DIEGO, STATE OF CALIFORNIA, WAS APPROVED BY THE CITY COUNCIL OF THE CITY OF CHULA VISTA, AT A REGULAR MEETING THEREOF, HELD ON THE ____ DAY OF _____, 201__, BY ITS RESOLUTION NO. _____.

CITY CLERK
CITY OF CHULA VISTA
SAN DIEGO COUNTY, CALIFORNIA

FILED THIS ____ DAY OF _____, 201__, AT THE HOUR OF ____ O'CLOCK ____ M. IN BOOK ____ OF MAPS OF ASSESSMENT AND COMMUNITY FACILITIES DISTRICTS AT PAGE _____, IN THE OFFICE OF THE COUNTY RECORDER IN THE COUNTY OF SAN DIEGO, STATE OF CALIFORNIA.

ERNEST J. DRONENBURG, JR.
COUNTY RECORDER
SAN DIEGO COUNTY, CALIFORNIA

FOR PARTICULARS OF THE LINES AND DIMENSIONS OF ASSESSOR PARCELS, REFERENCE IS MADE TO THE MAPS OF THE ASSESSOR, COUNTY OF SAN DIEGO, STATE OF CALIFORNIA.



Source: San Diego County GIS
Geographic Coordinate Reference: GCS North American 1983
Projection: NAD 1983 StatePlane California VI FIPS 0406 Feet