

D-7



OS Maintenance Review Map



200ft

-117.035 32.615 Degrees

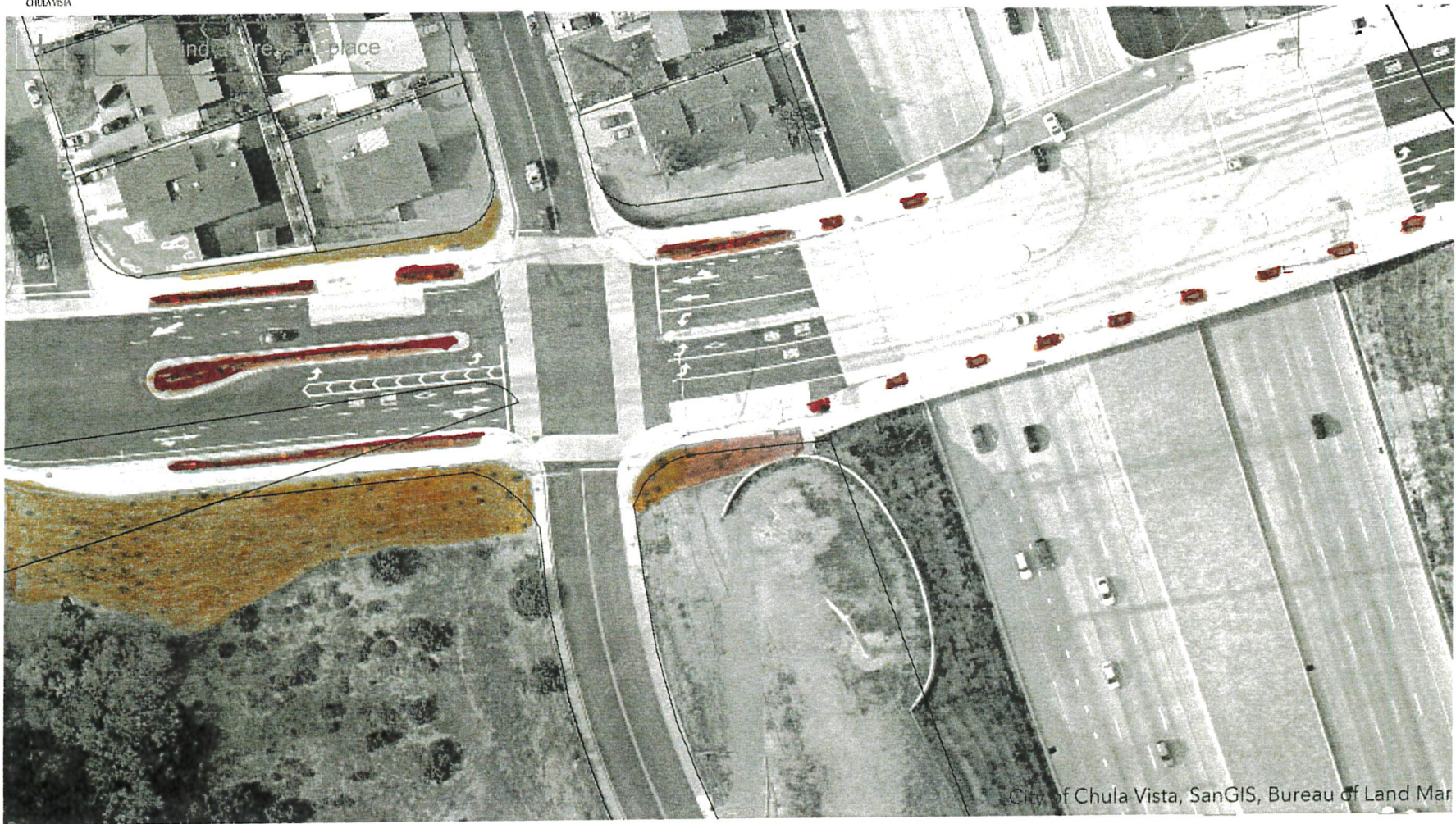
 code 1 0.20 ac.

 code 3 0.53 ac.

# DAR WEST



## OS Maintenance Review Map



100ft

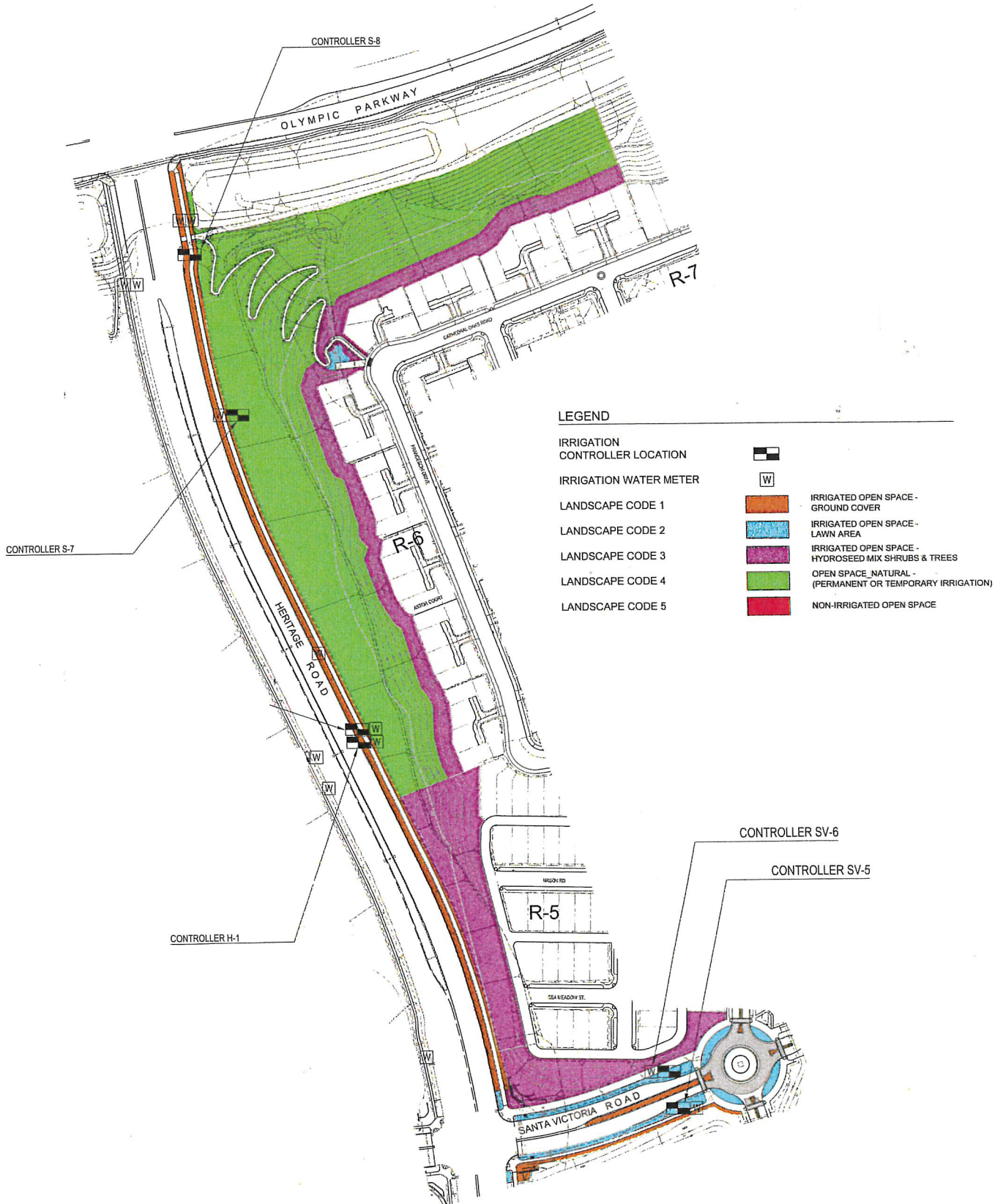
-117.038 32.615 Degrees

 CODE 1 0.08 AC

 CODE 4 0.53 AC

# Otay Ranch, Village 2

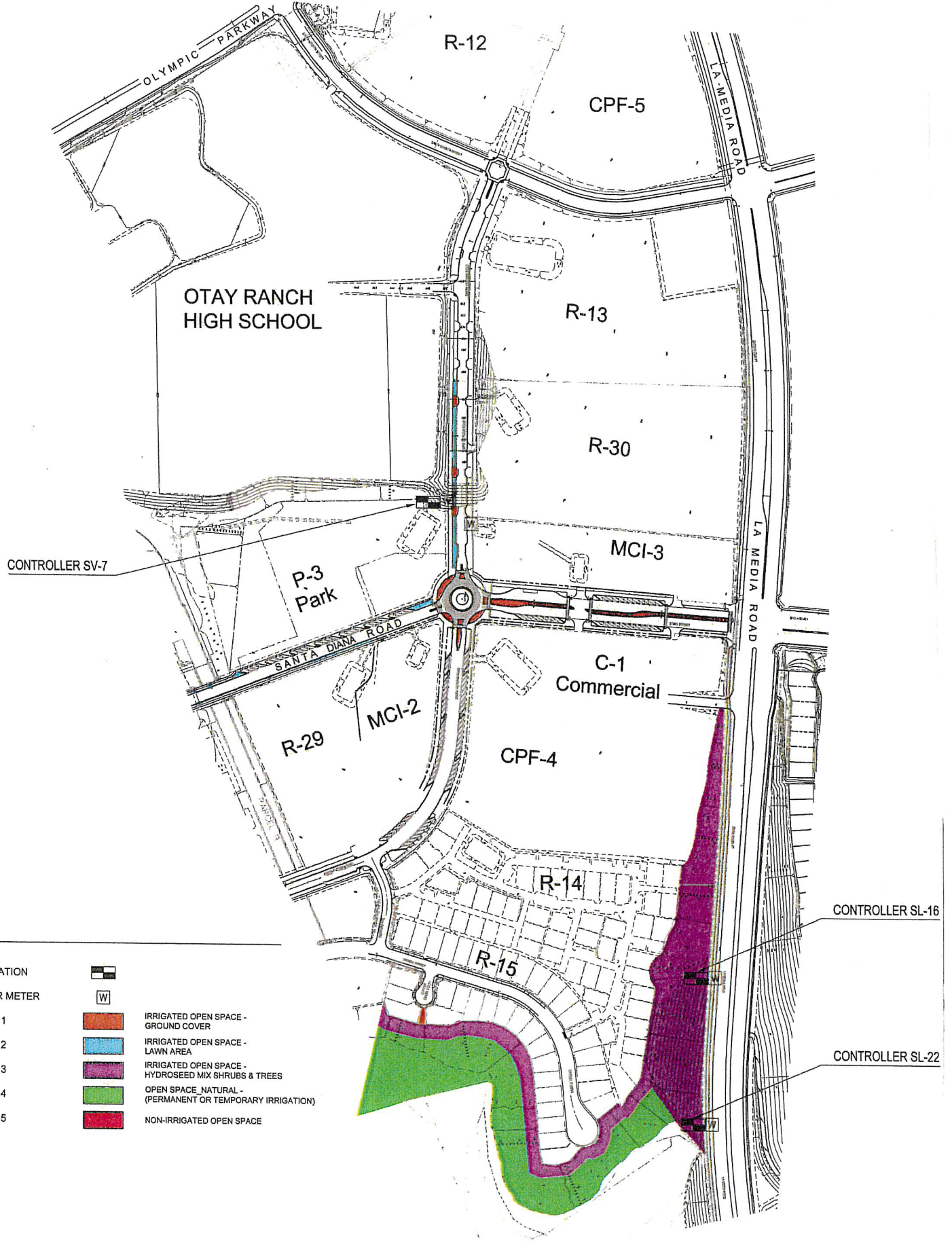
Heritage Road Slopes North - KB Home Slopes and Parkway - North Slopes Ph 1  
 Landscape Maintenance Map

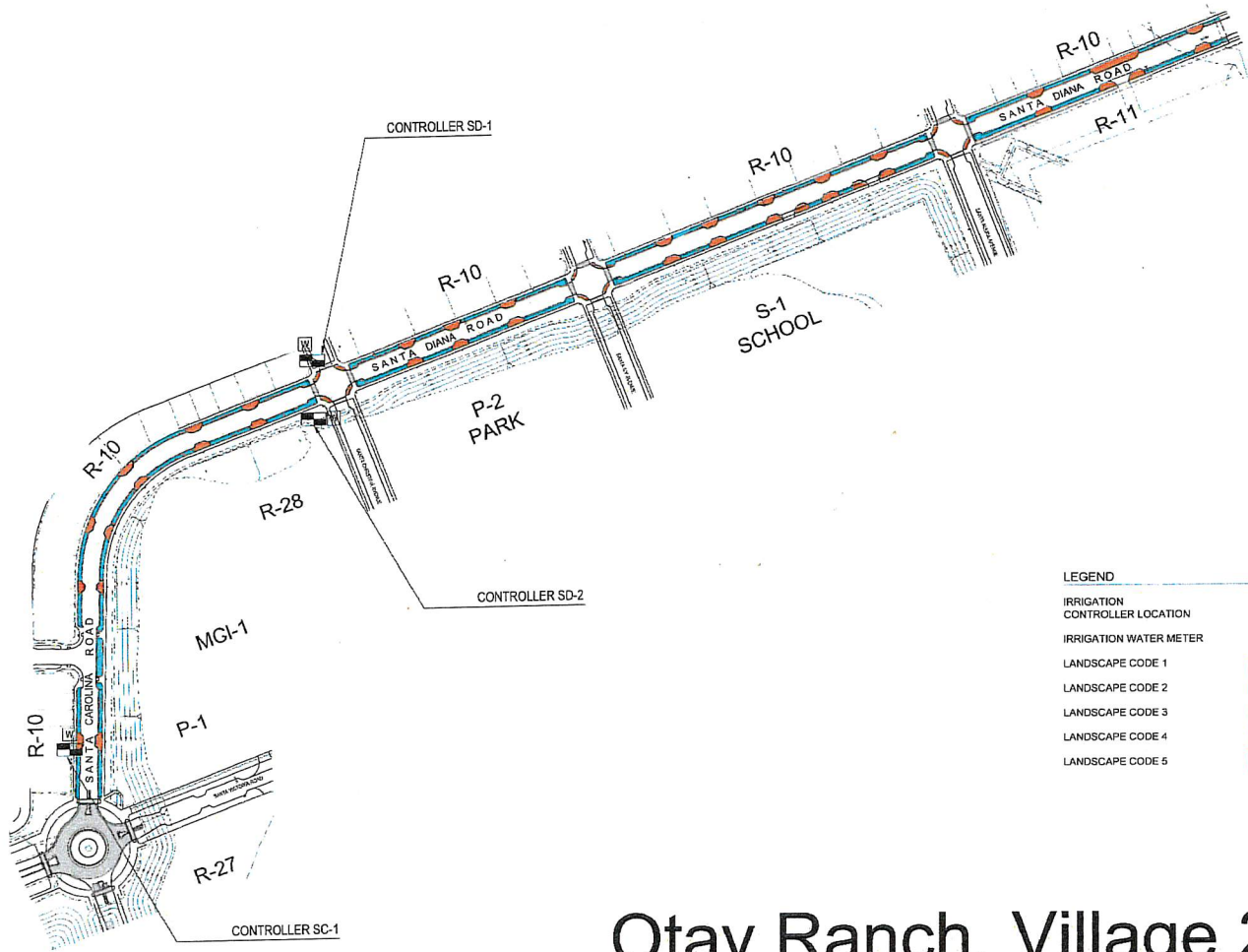


# Otay Ranch, Village 2 East

Community Facilities District, Medians, Parkways & Easements Areas

## Landscape Maintenance Map





**LEGEND**

IRRIGATION CONTROLLER LOCATION		
IRRIGATION WATER METER		
LANDSCAPE CODE 1		IRRIGATED OPEN SPACE - GROUND COVER
LANDSCAPE CODE 2		IRRIGATED OPEN SPACE - LAWN AREA
LANDSCAPE CODE 3		IRRIGATED OPEN SPACE - HYDROSEED MIX SHRUBS & TREES
LANDSCAPE CODE 4		OPEN SPACE, NATURAL - (PERMANENT OR TEMPORARY IRRIGATION)
LANDSCAPE CODE 5		NON-IRRIGATED OPEN SPACE

# Otay Ranch, Village 2 North

## Backbone Medians and Parkways

---

### Landscape Maintenance Map

LEGEND

IRRIGATION  
CONTROLLER LOCATION



IRRIGATION WATER METER



LANDSCAPE CODE 1



IRRIGATED OPEN SPACE -  
GROUND COVER

LANDSCAPE CODE 2



IRRIGATED OPEN SPACE -  
LAWN AREA

LANDSCAPE CODE 3



IRRIGATED OPEN SPACE -  
HYDROSEED MIX SHRUBS & TREES

LANDSCAPE CODE 4

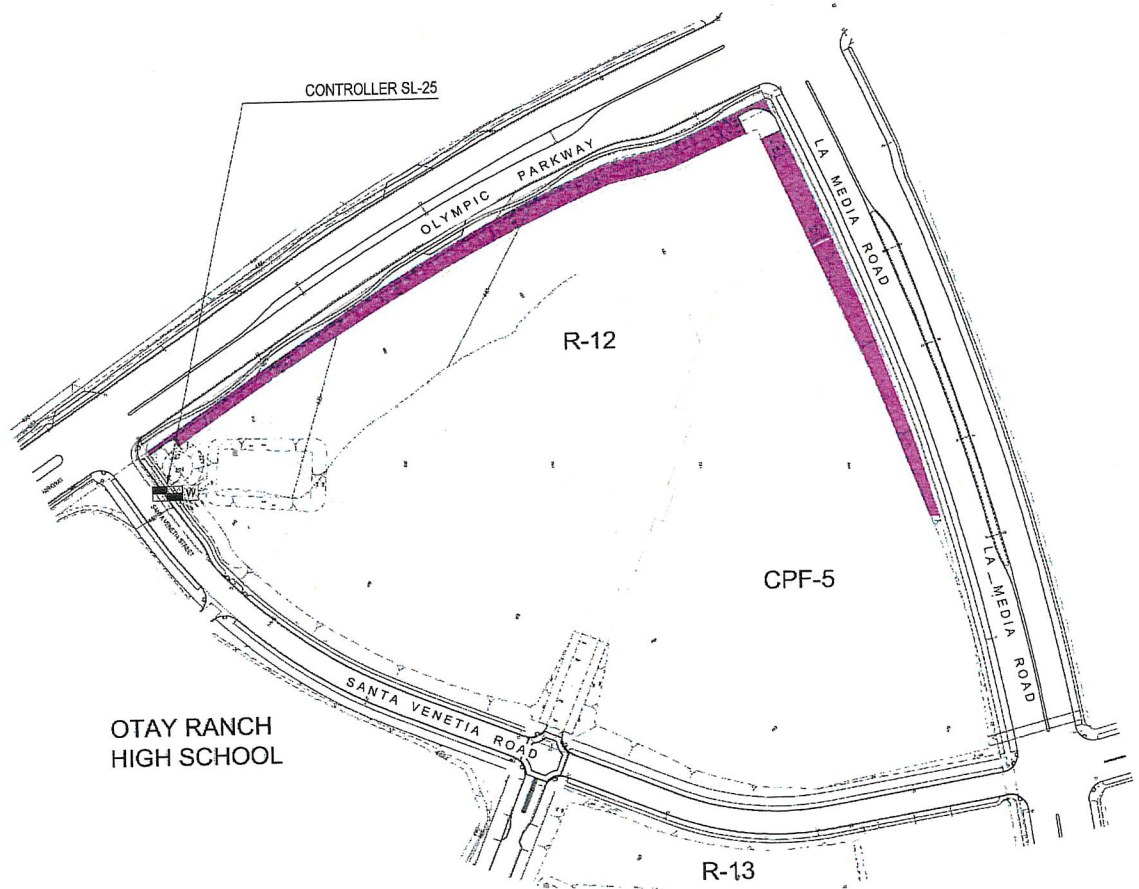


OPEN SPACE\_NATURAL -  
(PERMANENT OR TEMPORARY IRRIGATION)

LANDSCAPE CODE 5



NON-IRRIGATED OPEN SPACE



# Otay Ranch, Village 2 East

R-12 Slope

Landscape Maintenance Map

## Landscape Zone Data

### Zone 'A' (Medians, Parkways & Associated Easements)

Referenced Landscape Improvement Plans	Landscape Architect**	Landscape Code 1 (shrubs)	Landscape Code 2 (lawn)	Pedestrian Lights	Trees													Paving Materials															
					CO	G	H	J	K	L	P	PC	Q	R	RP	S	T	Type 1	Type 2	Type 3	Type 4	Type 5	Type 6	Type 7									
North Backbone Streets System SD-1:	TLA	7,137 SF	12,688 SF														43		16	13,515 SF													240 LF
System SD-2:		8,085 SF	15,812 SF	25													56		20	19,471 SF												285 LF	
System SV-5:		5,621 SF	10,528 SF	2				24									13			2,496 SF	6,674 SF					1,802 SF							
System SC-1:		1,200 SF	2,950 SF														10		3	2,454 SF											45 LF		
System SV-6, Parkway:		3,323 SF	7,461 SF	4				24													7,671 SF												
Heritage Rd Ph 1 System H-1:	TLA	35,217 SF	456 SF																50	974 SF		19,140 SF								306 LF	4,253 SF		
Heritage Rd North Slopes System S-7, Paseo:	TLA		1,271 SF																	2,643 SF											13 LF		
East Backbone Streets System SV-7:	TLA	14,653 SF	13,050 SF	12					17											49						1,380 SF	2,676 SF			146 LF			
East Slopes System SL-22, Paseo:	TLA	675 SF																															

### Zone 'B' (Perimeter Open-Space Slopes)

Referenced Landscape Improvement Plans	Landscape Architect**	Landscape Code 3	Landscape Code 4	Trees													Paving Materials													
				CO	C	CD	CA	CM	G	H	J	L	P	PP	PC	Q	R	T	Type 1	Type 2	Type 3	Type 4	Type 5	Type 6	Type 7					
East Slopes System SL-16:	TLA	196,511 SF							14		16						12	31		14										
System SL-22:		72,617 SF	174,953 SF							1					11			20		9										10 LF
System SL-25:		56,105 SF							21	24	24							28												
Heritage Rd Ph 1 System S-7:	TLA	25,641 SF	200,203 SF						35			8						37	31											
System SV-6:		77,875								17	2	4	7	5	5															
Heritage Rd Slopes Ph1 System S-8:	TLA	20,252 SF	132,112 SF	25															18	20										

### Perimeter Walls & Fencing

Referenced Landscape Improvement Plans	Landscape Architect**	Perimeter Walls & Fencing *							
		Type 1	Type 2	Type 3	Type 4	Type 5	Type 6	Type 7	Type 8
East Slopes/ System SL-25	TLA		1,973 LF	61					
Heritage Rd North Slopes/ S-7	TLA	16 LF	1,014 LF	29					
Heritage Rd North Slopes/ SV-6	TLA	607 LF	509 LF	15					
Heritage Rd Slopes Ph1/ S-8	TLA		696 LF	21					
East Slopes/ System SL-22	TLA	28 LF	1,052 LF	27	2		67 LF	196 LF	
East Slopes/ SL-16	TLA		409 LF						479 LF
									2

### Perimeter Walls & Fencing Descriptions

- Type 1: 6'-0" Community Theme Wall
- Type 2: 6'-0" Community Theme View Wall w/Tubular Steel
- Type 3: 6'-6" Pilaster
- Type 4: 2'-6" Pilaster
- Type 5: Low Theme Wall 2'
- Type 6: Tubular Steel Fence
- Type 7: Retaining Wall w/Tubular Steel Fence
- Type 8: 6'-18" Masonry Pilaster

### System Descriptions

- SD-1: North Backbone Medians and Parkways
- SD-2: North Backbone Medians and Parkways
- SL-26: East slopes - R12 Slopes
- H-1: Heritage Road Phase 1, East Parkways
- S-7: Heritage Road North Slopes
- SV-6: Heritage Road North Slopes and Parkway
- S-8: North Slopes Phase 1
- SV-7: Community Facilities District, Medians, Parkways and Easement Areas
- SL-22: Community Facilities District, Medians, Parkways and Easement Areas
- SL-16: Community Facilities District, Medians, Parkways and Easement Areas

### Paving Material Descriptions

- Paving Material Type 1: Public sidewalks & pedestrian ramps, natural gray colored concrete with a light broom finish
- Paving Material Type 2: Village pathway, integral colored concrete Scofield C-21 (Adobe tan) with a light broom finish
- Paving Material Type 3: Stabilized decomposed granite trails (Padre Gold)
- Paving Material Type 4: Vehicular access paving with planting cells for grass
- Paving Material Type 5: Median maintenance strip, natural gray colored concrete with broom finish
- Paving Material Type 6: 6" wide natural gray colored concrete header with trowel finish
- Paving Material Type 7: 6" DG Concrete Header

### Tree Descriptions

- Type CO: Cercis occidentalis, Western Redbud
- Type C: Calocedrus decurrens, Incense Cedar
- Type CD: Cedrus deodara, Deodar Cedar
- Type CA: Cupressus arizonica, Arizona Cypress
- Type CM: Cupressus macrocarpa, Monterey Cypress
- Type G: Geijera parviflora, Australian Willow
- Type H: Heteromeles arbutifolia, Toyon
- Type J: Jacaranda mimosifolia, Jacaranda
- Type K: Koeleruteria bipinnata, Chinese Flame Tree
- Type L: Lophostemon confertus, Brisbane Box
- Type P: Platanus racemosa, California Sycamore
- Type PP: Pinus pinea, Italian Stone Pine
- Type PC: Prosopis chilensis, Chilean Mesquite
- Type Q: Quercus agrifolia, Coast Live Oak
- Type R: Rhus lancea, African Sumac
- Type RP: Robinia pseudoacacia, Purple Robe, Black Locust
- Type S: Schinus molle, California Pepper Tree
- Type T: Tipuana tipu, Tipu Tree