

MAP OF PROPOSED BOUNDARIES OF THE BAYFRONT PROJECT SPECIAL TAX FINANCING DISTRICT

CITY OF CHULA VISTA
COUNTY OF SAN DIEGO
STATE OF CALIFORNIA



Legend

 COMMUNITY FACILITIES DISTRICT BOUNDARIES


FILED IN THE OFFICE OF THE CITY CLERK OF THE CITY COUNCIL OF THE CITY OF CHULA VISTA THIS 11th DAY OF September, 2019.

I HEREBY CERTIFY THAT THE WITHIN MAP SHOWING PROPOSED BOUNDARIES OF THE BAYFRONT PROJECT SPECIAL TAX FINANCING DISTRICT OF THE CITY OF CHULA VISTA, COUNTY OF SAN DIEGO, STATE OF CALIFORNIA, WAS APPROVED BY THE CITY COUNCIL OF THE CITY OF CHULA VISTA AT A REGULAR MEETING THEREOF, HELD ON THE 10th DAY OF September, 2019, BY ITS RESOLUTION NO. 2019-1167.


CITY CLERK
CITY OF CHULA VISTA



FILED THIS 12th DAY OF SEPTEMBER, 2019, AT THE HOUR OF 11:02 O'CLOCK A.M. IN THE BOOK 40 OF MAPS OF ASSESSMENT AND COMMUNITY FACILITIES DISTRICTS, PAGE(S) 20 AND AS INSTRUMENT NO. 2019-7000361 IN THE OFFICE OF THE COUNTY RECORDER IN THE COUNTY OF SAN DIEGO, STATE OF CALIFORNIA.


BY DEPUTY - Ernest J. Dronenburg, Jr.
COUNTY RECORDER
COUNTY OF SAN DIEGO
STATE OF CALIFORNIA

THE LINES AND DIMENSIONS OF EACH LOT OR PARCEL DIMENSIONS SHOWN ON THIS MAP SHALL BE THOSE LINES AND DIMENSIONS AS SHOWN ON THE SAN DIEGO COUNTY ASSESSOR'S MAPS FOR THOSE PARCELS LISTED.

THE SAN DIEGO COUNTY ASSESSOR'S MAPS SHALL GOVERN FOR ALL DETAILS CONCERNING THE LINES AND DIMENSIONS OF SUCH LOTS OR PARCELS.

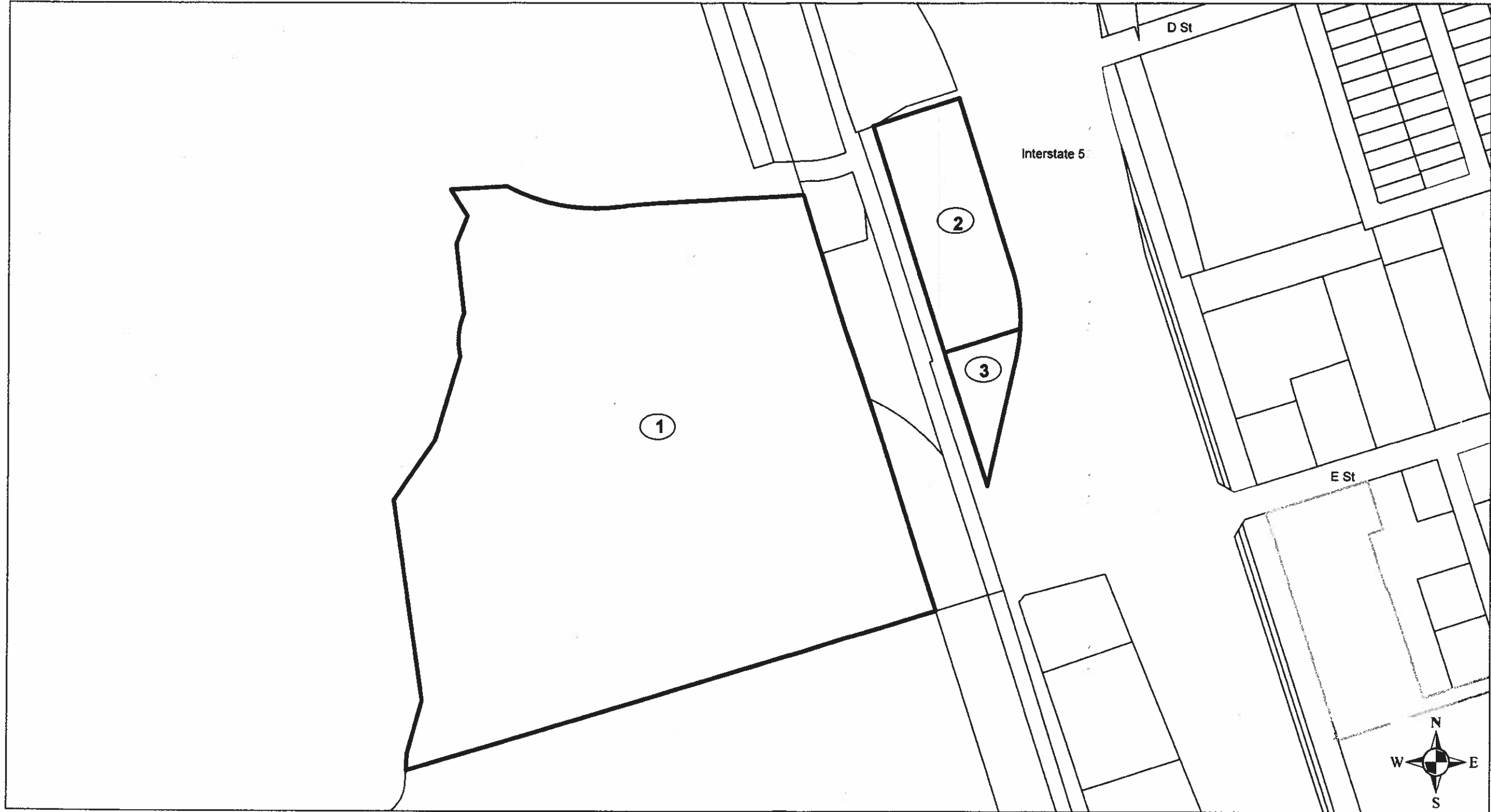
2019-7000361

BK-48 PG 38



MAP OF PROPOSED BOUNDARIES OF CITY OF CHULA VISTA BAYFRONT PROJECT SPECIAL TAX FINANCING DISTRICT

COUNTY OF SAN DIEGO
STATE OF CALIFORNIA



Legend

 COMMUNITY FACILITIES DISTRICT BOUNDARY



2019-7000361

BK 40 PG 39

BK 40 PG 39



2019-7000361

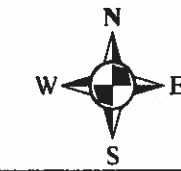
MAP OF PROPOSED BOUNDARIES OF CITY OF CHULA VISTA BAYFRONT PROJECT SPECIAL TAX FINANCING DISTRICT

COUNTY OF SAN DIEGO
STATE OF CALIFORNIA



Legend

-  PARCELS SOUTH selection
-  COMMUNITY FACILITIES DISTRICT BOUNDARY



2019-1000361

BK 48 PG 40

BK 48 PG 40

2019-1000361

MAP OF PROPOSED BOUNDARIES OF CITY OF CHULA VISTA BAYFRONT PROJECT SPECIAL TAX FINANCING DISTRICT

COUNTY OF SAN DIEGO
STATE OF CALIFORNIA



Legend

 COMMUNITY FACILITIES DISTRICT BOUNDARIES



2019-7000361

BK 48 PG 41

BK 48 PG 41

2019-7000361

MAP OF PROPOSED BOUNDARIES OF CITY OF CHULA VISTA BAYFRONT PROJECT SPECIAL TAX FINANCING DISTRICT

COUNTY OF SAN DIEGO
STATE OF CALIFORNIA



Legend

 COMMUNITY FACILITIES DISTRICT BOUNDARIES



2019-7000-361

BK 40 PG 42

BK 40 PG 42

2019-7000-361

**MAP OF PROPOSED BOUNDARIES OF CITY OF CHULA VISTA
BAYFRONT PROJECT SPECIAL TAX FINANCING DISTRICT**

COUNTY OF SAN DIEGO
STATE OF CALIFORNIA

| Map Reference Number | Assessor's Parcel Number | Sheet |
|----------------------|--------------------------|-------|
| 1 | 565-010-30-00 | 2 |
| 2 | 565-310-33-00 | 2 |
| 3 | 565-310-32-00 | 2 |
| 4 | 567-011-05-00 | 3 |
| 5 | 567-021-29-00 | 3 |
| 6 | 567-021-38-00 | 3 |
| 7 | 567-021-37-00 | 3 |
| 8 | 567-021-36-00 | 3 |
| 9 | 567-031-26-00 | 3 |
| 10 | 567-031-27-00 | 3 |
| 11 | 760-048-24-00 | 4 |
| 12 | 760-048-00-03 | 4 |
| 13 | 760-048-05-00 | 4 |
| 14 | 571-330-31-00 | 4 |
| 15 | 760-235-35-00 | 4 |
| 16 | 571-330-33-00 | 4 |
| 17 | 571-330-32-00 | 4 |
| 18 | 571-240-01-00 | 5 |

2019-7000361

BK 40 PG 43



BK 40 PG 43

2019-7000361