

**ADA CURB RAMPS FY2014/2015 (STL405)  
ADA CURB RAMPS FY2016/2017 (STL415)  
AND  
REPLACEMENT OF CURB & GUTTER PROGRAM  
CITYWIDE FY2015/16 (STL407)**

**THIS ADDENDUM MUST BE SIGNED AND SUBMITTED WITH THE BID**

**ADDENDUM #1**

**Bid Opening Date: April 19, 2017. (No Change)**

**Sealed proposals will be received at the Department of Public Works, Engineering located in the Public Services Building (PSB), Building B, 276 Fourth Avenue, Chula Vista, CA, until 2:00 p.m. on April 19, 2017 at which time they will be publicly opened and read. Bids will not be accepted after this time.**

This addendum is issued before the Bid Opening to inform the bidders of a date inconsistency, revised submittal requirements pertaining to Prevailing Wage Rates and to update the Bid Proposal. The following information is for Contractor use in developing bid packages:

**CLARIFICATIONS OF ADVERTISEMENT PACKAGE**

- 1. Page 2, Change Bid Opening Date from February 15, 2017 to April 19, 2017.**
- 2. Page 6, BID PROPOSAL REQUIREMENTS AND CONDITIONS – Section 7, WAGE RATES AND CLASSIFICATIONS FOR PREVAILING WAGE PROJECTS, First and Second Paragraphs:**

First Paragraph, third sentence is deleted and replaced with the following:

*The prevailing wage scales are those determined by the Director of Industrial Relations, State of California.*

First Paragraph, fourth sentence pertaining to obliged payment is deleted.

Second paragraph pertaining to Federal Prevailing Wage is deleted in its entirety.

- 3. New Item of Work – Replacement of one curb inlet at the SW Corner of Hilltop Drive and Vista Way, (Ramp Location No. 110) – See Attached Bid Proposal.**


Replace existing Bid Proposal (pages 14 thru 18) with the attached Bid Proposal to be submitted with your Bid Package.


Add attached Standard Drawings to Appendix D.

**Please acknowledge and submit this Addendum as part of your bid package. The bid package shall be declared as non-responsive without an authorized signature and submitting this addendum within your bid package prior to the bid opening.**

ACKNOWLEDGED BY:

\_\_\_\_\_  
Bidder's Signature

  
\_\_\_\_\_  
Jose Luis Gomez, P. E., P.L.S.  
Principal Civil Engineer  
Department of Public Works Engineering  
City of Chula Vista

  
\_\_\_\_\_  
Mario Ingrassi, P. E.  
Associate Civil Engineer  
Department of Public Works Engineering  
City of Chula Vista

**THIS ADDENDUM MUST BE SIGNED AND SUBMITTED WITH THE BID**

Attachments:

New Bid Proposal Sheets

San Diego Regional Standard Drawings for "Type C-2" Curb Inlet

# BID PROPOSAL

To the Honorable Mayor and City Council of the City of Chula Vista.

The undersigned acknowledges that he/she has carefully examined the plans and specifications for:

- ADA CURB RAMPS FY2014/2015 (STL405)
- ADA CURB RAMPS FY2016/2017 (STL415)

AND

## REPLACEMENT OF CURB & GUTTER PROGRAM CITYWIDE FY2015/16 (STL407)

and that he/she has examined the location of the proposed work and has read the accompanying instructions to bidders, and hereby proposes to furnish all materials, and do all the work required to complete the said work in accordance with said plans, specifications, and Special Provisions for the unit price or lump sum set forth in the following schedule. Any Request for Information (RFI) regarding the advertised project must be submitted in writing to the office of Engineering, 276 Fourth Avenue Chula Vista, CA 91910 no later than five (5) consecutive working days prior to the bid opening. Any RFI request after the deadline will not be entertained.

The Contractor has NINETY (90) consecutive working days to complete the project.

### 1 – ADA RAMP INSTALLATION AND CURB, GUTTER AND SIDEWALK REPLACEMENT BID PROPOSAL “A”

Item	Description	Qty	Unit	Unit Price in Words	Unit Cost in Figures	Total
1	Removal and Replacement of 6-inch PCC Monolithic Curb, Gutter and Sidewalk (SDRSD G-3)	550	LF			
2	Removal and Replacement of 6-inch PCC Curb and Gutter (SDRSD G-2)	1000	LF			
3	Removal and Replacement of 6-inch Monolithic PCC Driveway with Approach & Sidewalk (CVCS-1A)	850	SF			

Item	Description	Qty	Unit	Unit Price in Words	Unit Cost in Figures	Total
4	Removal and Replacement of 4-inch PCC Sidewalk (SDRSD G-7)	19,000	SF			
5	Removal and Replacement of 6" PCC Slab Work (Spandrel / Cross Gutter) – (CVCS-2)	500	SF			
6	Installation of P.C.C. Pedestrian Ramps (CVCS-25)	11	EA			
7	Installation of P.C.C. Pedestrian Ramps (CVCS-27)	53	EA			
8	Installation of P.C.C. Pedestrian Ramps (CVCS-28)	21	EA			
9	Remove Existing and Install New Type C-2 Curb Inlet (SDRSD D-03A & D-03B)	1	EA			
10	6" Stem Wall	60	LF			
11	AC Grind & Overlay	1000	SF			
12	Remove and Replace AC Pavement (Full Section)	250	SF			
13	Thermoplastic Striping & Pavement Legends	800	SF			
14	Tree and Stump Removal (Diameter Inches)	320	IN			
15	Root Pruning and Tree Trimming (see list, Appendix B)	1	LS			

Item	Description	Qty	Unit	Unit Price in Words	Unit Cost in Figures	Total
16	Supply and Install Root Barrier (19.5" Deep)	600	LF			
17	Clearing and Grubbing, Removal and Disposal of Existing Improvements	1	LS			
18	Instal Red Curb (Paint)	100	LF			
19	Furnish and Install TRANSNET Sign	2	EA			
20	Public Convenience and Safety (Traffic Control)	1	LS			

## 2 - INTERSECTION IMPROVEMENTS AT MAIN STREET AND THIRD AVENUE BID PROPOSAL "B"

Item	Description	Qty	Unit	Unit Price in Words	Unit Cost in Figures	Total
21	Installation of P.C.C. Pedestrian Ramps (CVCS-25) (3 <sup>rd</sup> & Main)	2	EA			
22	Installation of P.C.C. Pedestrian Ramps (CVCS-28)	1	EA			
23	Removal and Replacement of AC Pavement (Full Section)	2400	SF			
24	Removal and Replacement of 4-inch PCC Sidewalk (SDRSD G-7)	220	SF			
25	Furnish and Install Type 1A Standard	2	EA			
26	Furnish and Install Ped Push Button Post	2	EA			

Item	Description	Qty	Unit	Unit Price in Words	Unit Cost in Figures	Total
27	Furnish and Install #5 Pull Box	1	EA			
28	Furnish and Install #6 Pull Box	2	EA			
29	Furnish and Install Pedestrian Countdown Indication and Mounting Hardware	4	EA			
30	Relocate Existing Pedestrian Push Buttons	3	EA			
31	Furnish and Install Loop Detectors	18	EA			
32	Furnish and Install Conduit	95	LF			
33	Furnish and Install Conduit Stub-out	3	EA			
34	Furnish and Install Detector Lead-in Cable	1	LS			
35	Furnish and Install 3 Conductor Cable	1	LS			
36	Furnish and Install 12 Conductor Cable	1	LS			
37	Thermoplastic Striping & Pavement Legends	2000	SF			
38	Removal, Disposal and/or Salvage of Existing Improvements	1	LS			
39	Public Convenience and Safety (Traffic Control)	1	LS			

**SUBTOTAL  
(BASE BID "A" - ADA CURB RAMPS &  
REPLACEMENT OF CURB & GUTTER):**

\_\_\_\_\_ (Bid Items #1 thru #19)

**SUBTOTAL  
(BASE BID "B" - INTERSECTION  
IMPROVEMENTS AT MAIN STREET  
AND THIRD AVENUE):**

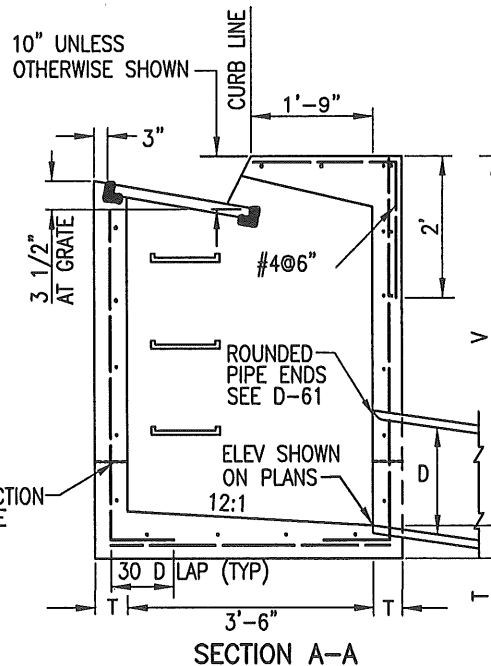
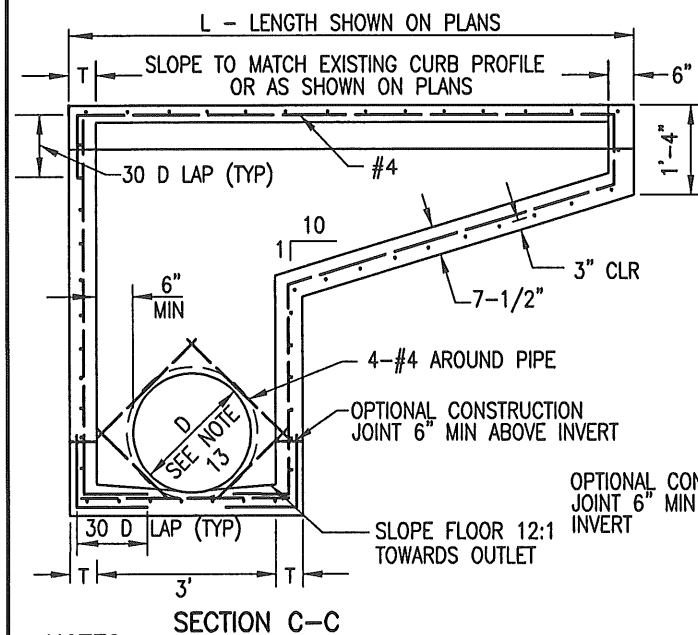
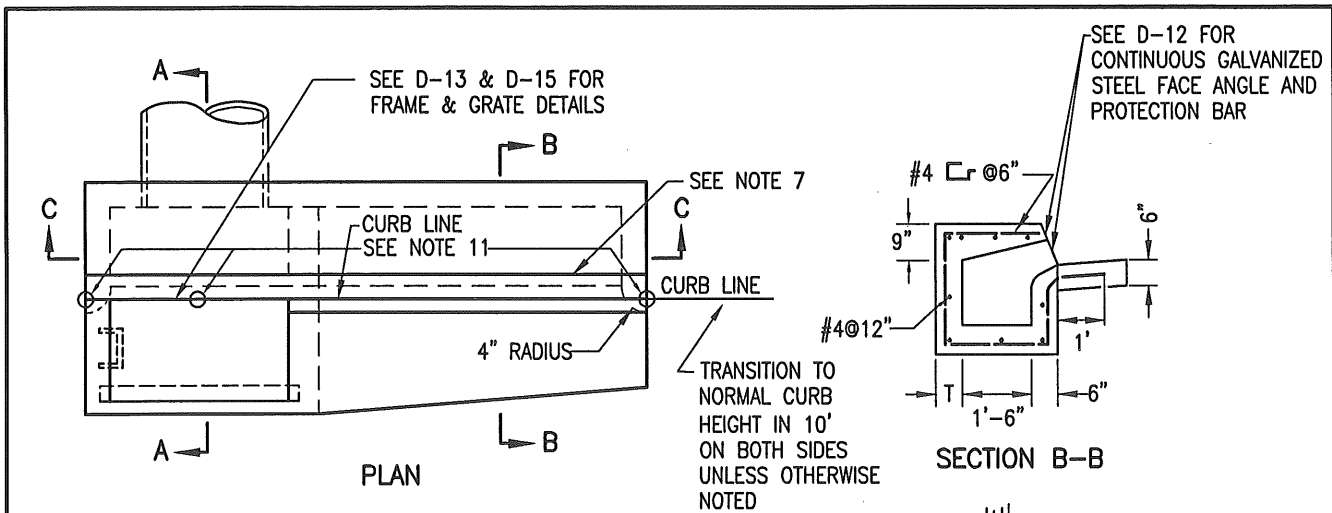
\_\_\_\_\_ (Bid Items #20 thru #38)

**GRAND TOTAL BASE BID (A + B)**

\_\_\_\_\_ (In Figures)

**GRAND TOTAL BASE BID (A + B)**

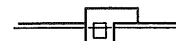
\_\_\_\_\_ (In Words)



**NOTES**

1. SEE D-11A THROUGH D-15 FOR ADDITIONAL NOTES AND DETAILS.
2. TYPES ARE DESIGNATED ON PLANS AS FOLLOWS: C (NO WING), C-1 (ONE WING) or C-2 (TWO WINGS).
3. EXPOSED EDGES OF CONCRETE SHALL BE ROUNDED WITH A RADIUS OF 1/2".
4. STEPS SHALL BE INSTALLED WHEN V EXCEEDS 4'. SEE D-11A FOR DETAILS.
5. CONCRETE GUTTER TO MATCH ADJACENT GUTTERS.
6. AN EXPANSION JOINT SHALL BE PLACED AT THE ENDS OF THE INLET WHERE THE CURB IS TO ADJOIN.
7. PROVIDE 1/4" TOOLED GROOVE IN TOP SLAB IN LINE WITH BACK OF ADJACENT CURB.
8. SURFACE OF TOP SLAB TO MATCH SIDEWALK FINISH AND SLOPE.
9. MAINTAIN 1-1/2" CLEAR SPACING BETWEEN REINFORCING AND CONCRETE SURFACE UNLESS OTHERWISE NOTED.
10. WHERE INLET IS TO BE CONSTRUCTED ON GRADE AND CONCRETE APRON PER D-03B IS REQUIRED, LIFT DOWN-GRADE END OF GRATE AS SHOWN ON D-03B.
11. IF REQUIRED BY LOCAL AGENCY, EXTEND TOP SLAB STEEL REINFORCEMENT 12" INTO ADJACENT SIDEWALK.
12. ELEVATIONS SHALL BE SHOWN ON PLANS WHERE INDICATED BY "O" SYMBOL.
13. DIAMETER "D" SHALL BE 24" MAXIMUM; FOR LARGER DIAMETER PIPES THIS DRAWING MUST BE MODIFIED.

**LEGEND ON PLANS**



Revision	By	Approved	Date
ORIGINAL		Kercheval	12/75
Reformatted		T. Stanton	04/06
Replaced D-3		T. Stanton	02/09
Edited	S.S.	T. Regello	03/11
Edited	T.R.	T. Regello	10/15

**SAN DIEGO REGIONAL STANDARD DRAWING**

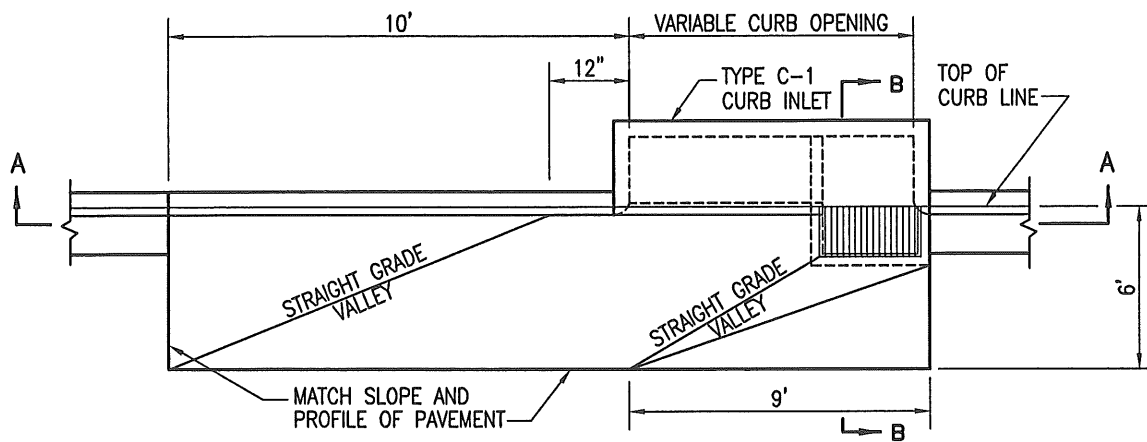
**CURB INLET - TYPE C**

RECOMMENDED BY THE SAN DIEGO REGIONAL STANDARDS COMMITTEE

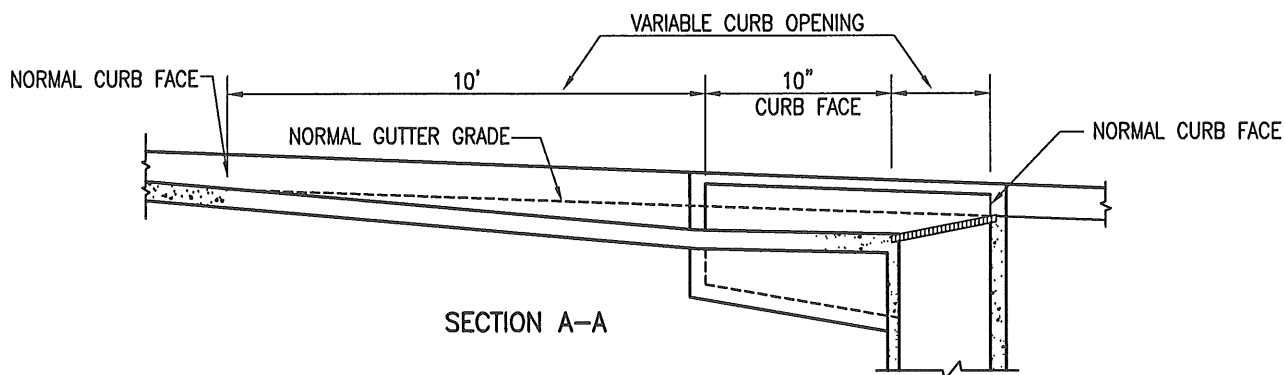
*M. Stanton* 12/17/2015  
Chairperson R.C.E. 19246 Date

**DRAWING NUMBER D-03A**

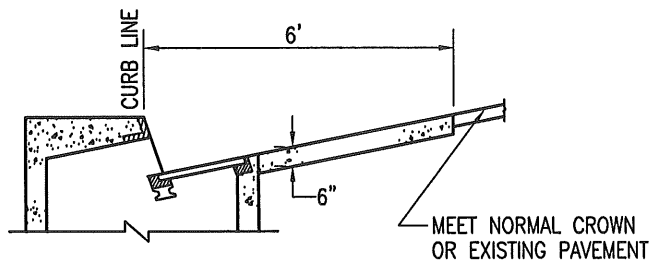




PLAN



SECTION A-A

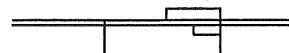


SECTION B-B

NOTES

1. CURB AND APRON TO BE MONOLITHIC POUR.
2. USE OF FALSE HEADER AT VALLEYS AND SLOPE BREAK LINE IS OPTIONAL.
3. EXTEND VERTICAL STEEL FROM INLET STRUCTURE INTO CONCRETE APRON AS SHOWN ON SECTION B-B OF D-03A.
4. CONCRETE SHALL BE 520-C-2500.

LEGEND ON PLANS



Revision	By	Approved	Date
ORIGINAL		Kercheval	12/75
Reformatted		T. Stanton	04/06
Replaced D-20		T. Stanton	02/09
Edited	S.S.	T. Regello	03/11
Edited	T.R.	T. Regello	10/15

SAN DIEGO REGIONAL STANDARD DRAWING

CONCRETE APRON FOR TYPE C CURB INLET

RECOMMENDED BY THE SAN DIEGO REGIONAL STANDARDS COMMITTEE

*T. Stanton* 12/17/2015  
 Chairperson R.C.E. 19246 Date

DRAWING NUMBER **D-03B**