

MILLENNIA NORTHEAST URBAN PARK
VICINITY MAP

 - Project Location

NTS



SCHMIDT DESIGN GROUP, INC.
ARCHITECTURAL, DESIGN & CONSTRUCTION SERVICES
1415 South Bascom, San Diego, CA 92108
Telephone (619) 441-1414 Telefax (619) 441-1415
www.schmidtgroup.com
LIC. 124158, 01/19, 02/2019

CONVERGENCE

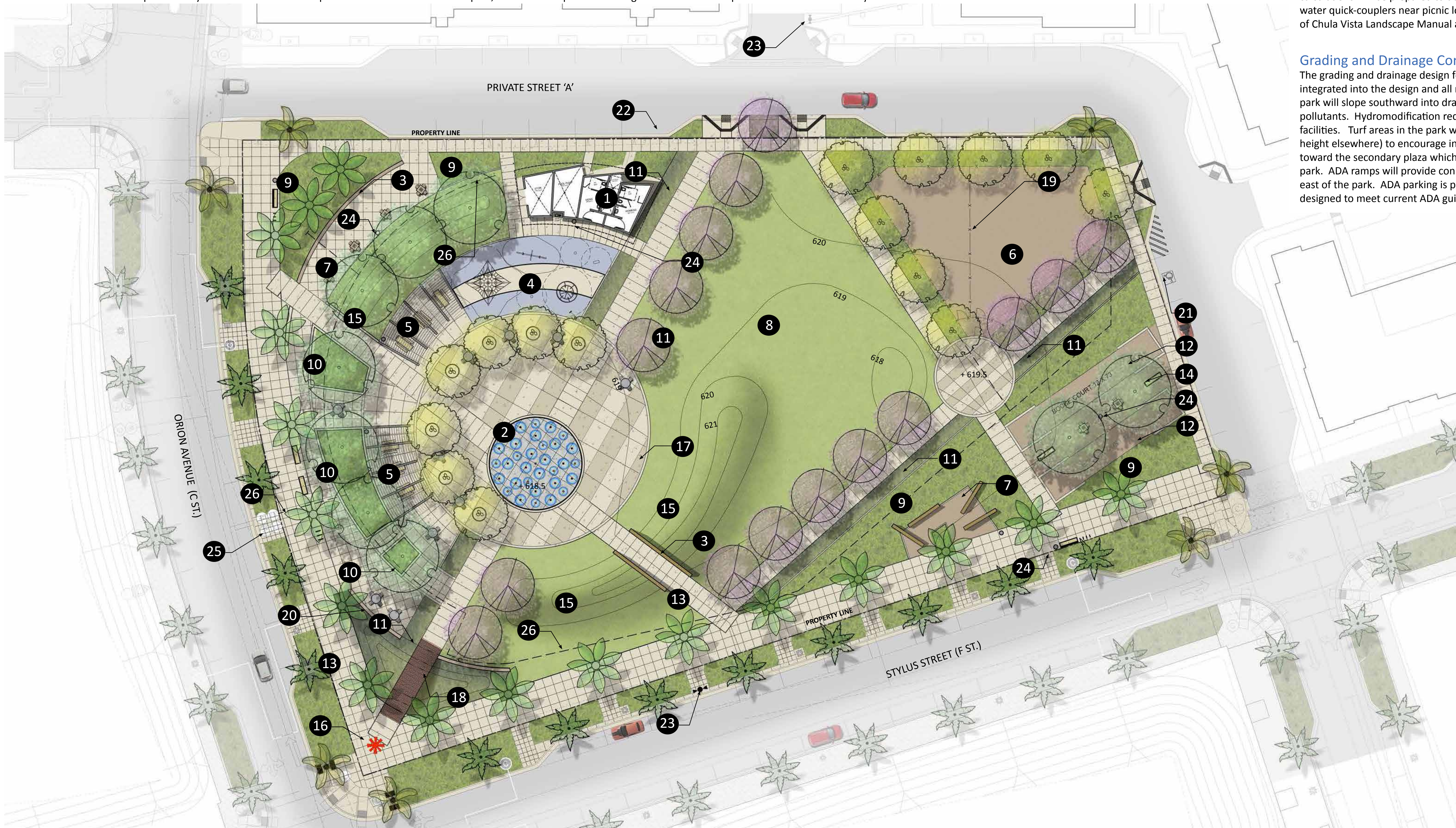
This concept is inspired by the work of artist Henry Manning titled "Social Interaction Explained" which uses a series of forms and colors to express the variety of possibilities resulting from social interactions. A hierarchy of interactions within this concept occur by the weaving of walkways, gathering spaces, and program elements to create a series of unique spaces tailored to encourage socialization. The park's central plaza is highlighted by an interactive water feature. This plaza is surrounded by a series of shade structures, informal gathering spaces, children's play area, comfort station, and large turf space. This turf space is anchored to the east by a secondary plaza that could also serve as a small stage for events. A dog park and pair of bocce ball courts with seating radiate from the secondary plaza. A small seating node has also been provided to further activate the interface between the park and Stylus Street. An interactive public art will be included at the park, with an iconic piece anchoring the entrance to the park at the intersection of Stylus Street and Orion Avenue.

Irrigation Concept

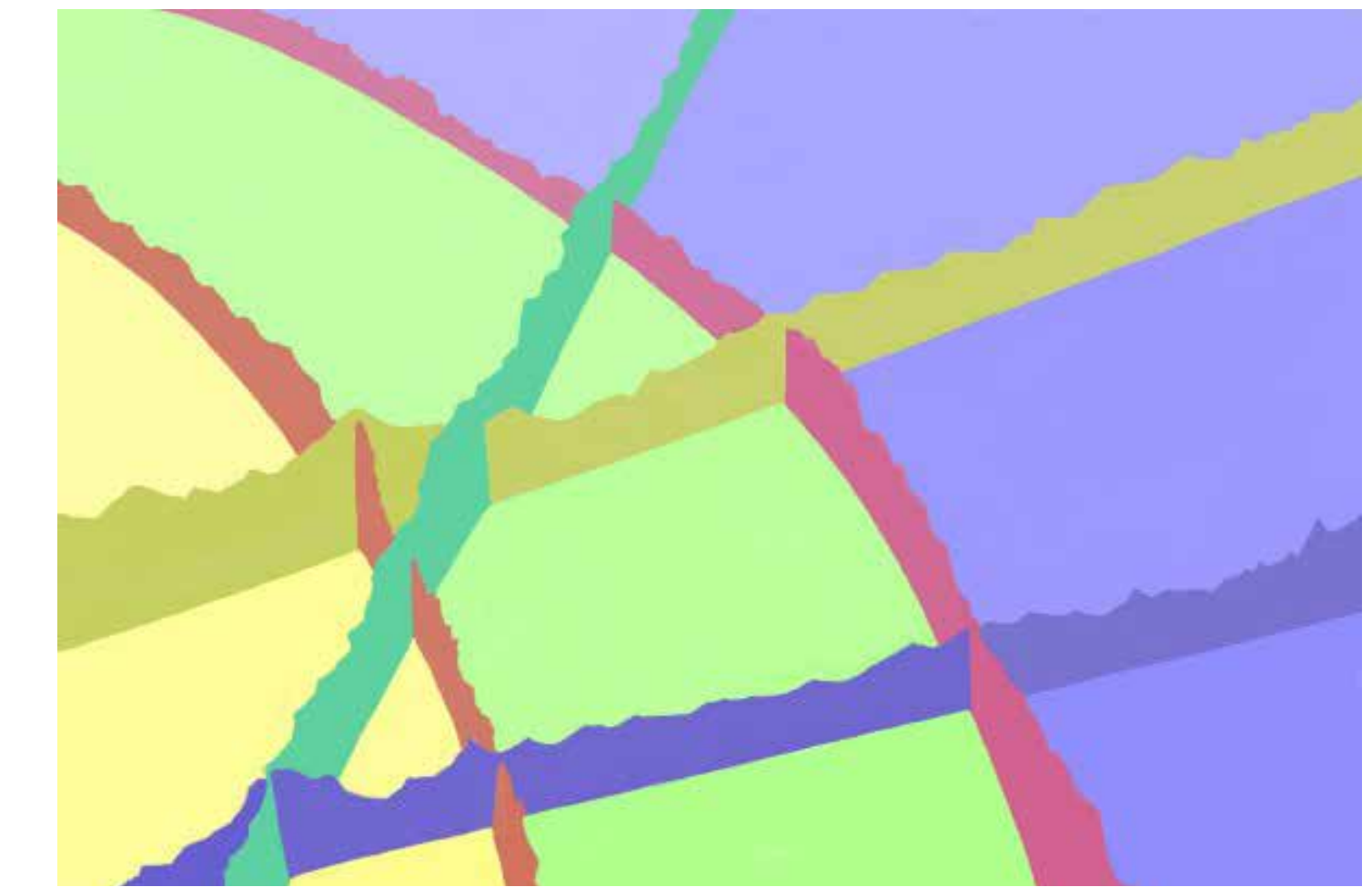
The irrigation for the park will utilize an automatically controlled irrigation system using low gallonage spray heads for most planting areas. Larger turf areas will include rotors. A "smart" controller will be utilized and the irrigation will comply with the City of Chula Vista Landscape Water Conservation Ordinance, Chapter 20.12 of the Municipal Code. Water use calculations will be prepared to demonstrate how the ETWA will not exceed the MAWA. The design will also include potable water quick-couplers near picnic locations to aid in the wash down of tables. The irrigation design will conform to the City of Chula Vista Landscape Manual and equipment will conform to City Park standards.

Grading and Drainage Concept

The grading and drainage design for Millenia Park will comply fully with the City Water Quality Manual. Bioswales are integrated into the design and all non-porous surfaces will be routed to Low Impact Develop treatment systems. The dog park will slope southward into drains that connect to the nearby bioswale to centralize, collect, and cleanse any generated pollutants. Hydromodification requirements for the park will be met with a system of above and below grade storage facilities. Turf areas in the park will be gently mounded (2' maximum height adjacent to the play area and 3' maximum height elsewhere) to encourage informal play, picnicking and people watching. The large lawn area is graded to gently slope toward the secondary plaza which also serves as a small stage or backdrop for summer movie nights and other events at the park. ADA ramps will provide connections at all intersections, as well as mid-block crossings to the development north and east of the park. ADA parking is provided at the east side of the park and all pathways and plazas within the park will be designed to meet current ADA guidelines.



INSPIRATION IMAGERY



SOCIAL INTERACTION INSPIRATION



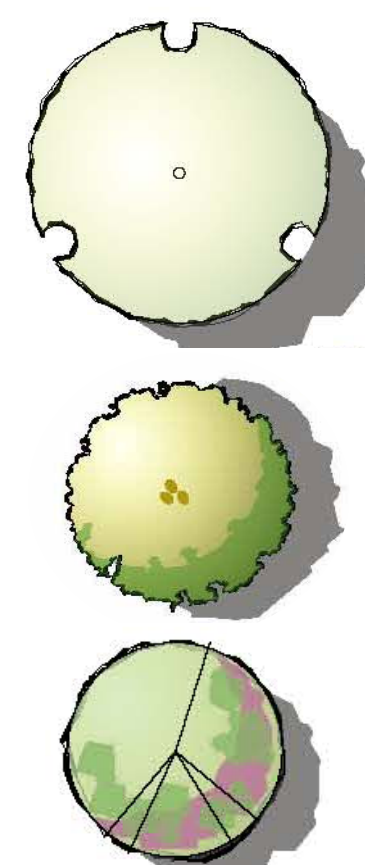
INTERACTIVE WATER FEATURE



OUTDOOR GAMES / SOCIAL SPACES

LEGEND

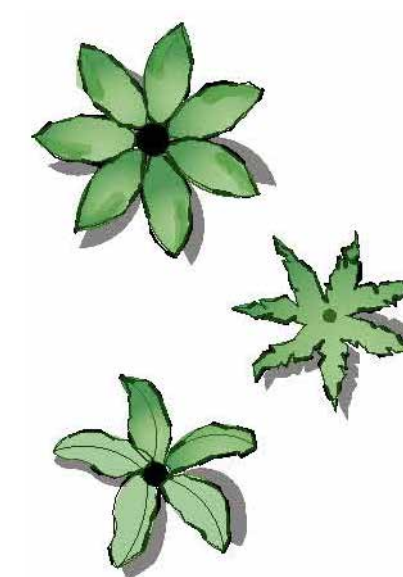
- 1 Comfort Station
- 2 Interactive Water Feature
- 3 Seat Wall with Integral Skate Deterrents
- 4 Children's Play Area (Resilient Play Surfacing)
- 5 Tubular Steel Shade Structure
- 6 D.G. Dog Run - 4,900 Sq. Ft.
- 7 Social Seating Nodes
- 8 Flexible Lawn Space
- 9 Planting Area
- 10 Raised Seat Wall Planters with Skate Deterrents
- 11 Linear Bioswale
- 12 D.G. Bocce Court
- 13 Concrete Paving
- 14 Decomposed Granite Paving
- 15 Raised Turf Mound (2'-0" Max Height at Play Area, 3'-0" Max Height at Large Turf)
- 16 Interactive Art Sculpture
- 17 Integral Color Concrete
- 18 Ipe Wood Bridge
- 19 4'-6" Tubular Steel Fence @ Dog Park
- 20 Park Entry Monument Wall
- 21 Accessible Parking Space
- 22 Service Vehicle Parking Space
- 23 Fire Hydrant
- 24 Trash Receptacle Typ.
- 25 Reclaimed Water Meter
- 26 Proposed Irrigation Mainline



LARGE SHADE TREES (36" Box) SUCH AS:
Cinnamom camphora - Camphor
Jacaranda mimosifolia - Jacaranda
Tipuana tipu - Tipu

SMALLER SHADE TREES (36" Box) SUCH AS:
Geijera parvifolia - Australian Willow
Magnolia 'Little Gem' - Magnolia
Pistacia chinensis - Chinese Pistache

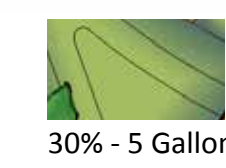
FLOWERING ACCENT TREES (24" Box) SUCH AS:
Cassia leptophylla - Gold Medallion Tree
Lagerstroemia indica - Crape Myrtle
Tabebuia impetiginosa - Pink Ipe



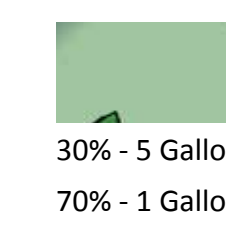
Palm Trees (10' BTH.):
Phoenix dactylifera - Date Palm

Brahea armata - Mexican Blue Palm

Archontophoenix cunninghamiana - King Palm



BIOSWALE SHRUBS SUCH AS:
Carex Spp.
Eleocharis macrostachya
Juncus patens
Leymus condensatus 'Canyon Prince'



SHRUBS SUCH AS:
 30% - 5 Gallon
 70% - 1 Gallon
Agave attenuata
Anigozanthos spp.
Arctostaphylos 'Sunset'
Cistus x Skanbergii
Diets 'Bicolor'
Echeveria 'Afterglow'
Festuca glauca
Lavandula spp.
Ligustrum japonicum
Kniphofia 'Christmas Cheer'
Phormium spp.
Pittosporum 'Silver Sheen'
Rhamnus californica 'Eve Case'
Rose 'Iceberg'
Rosmarinus spp.

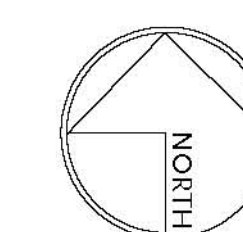
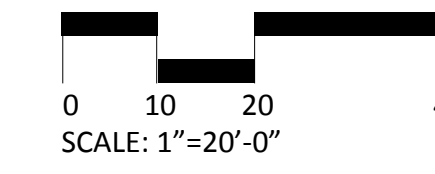


TURFGRASS
Paspalum Bermuda Sod with Rye Overseed



MILLENNIA NORTHEAST URBAN PARK

DRAFT MASTER PLAN



December 12, 2013
 Sheet 1 of 5

SCHMIDT DESIGN GROUP, INC.
 BALANCING ARTISTIC EXPRESSION IN DESIGN
 WITH ENVIRONMENTAL SENSITIVITY

2655 Fourth Avenue, San Diego, CA 92103
 telephone (619) 236-1452 facsimile (619) 236-8792
 www.schmidtsg.com
 Lic. CA 2138, NV 219, AZ 34139

SITE FURNISHINGS



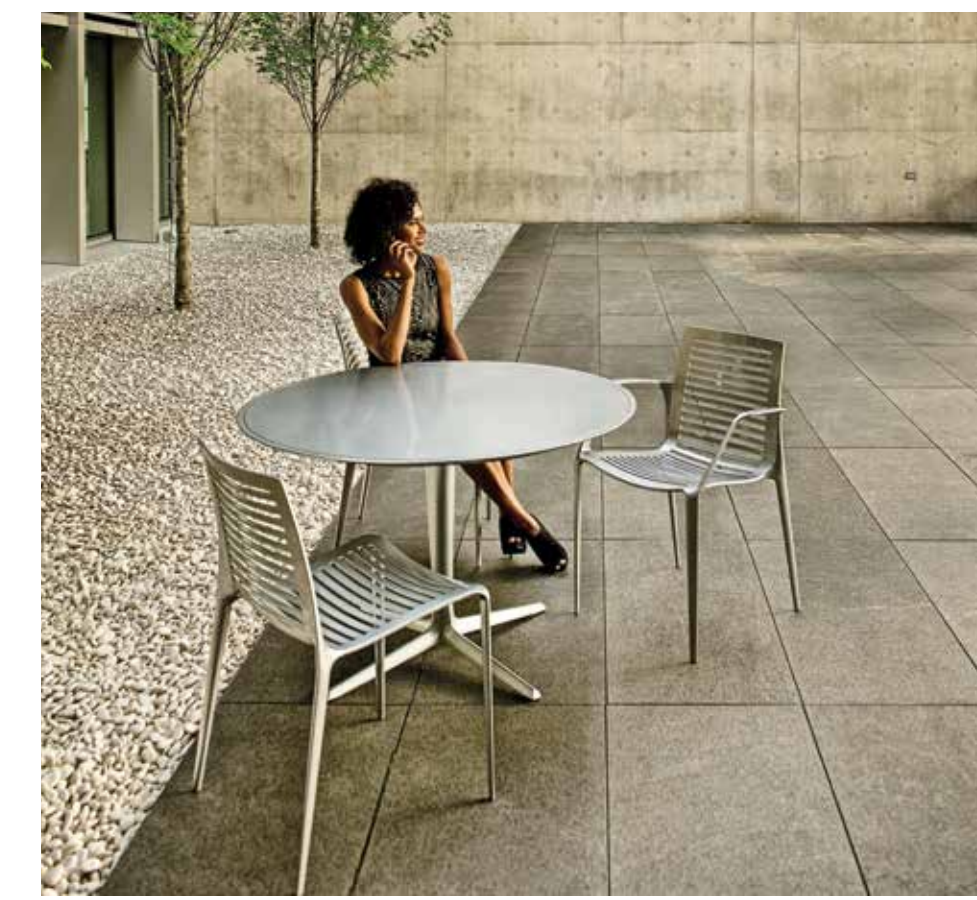
'Trio Bench' By Forms + Surfaces



'Trio Table' By Forms + Surfaces



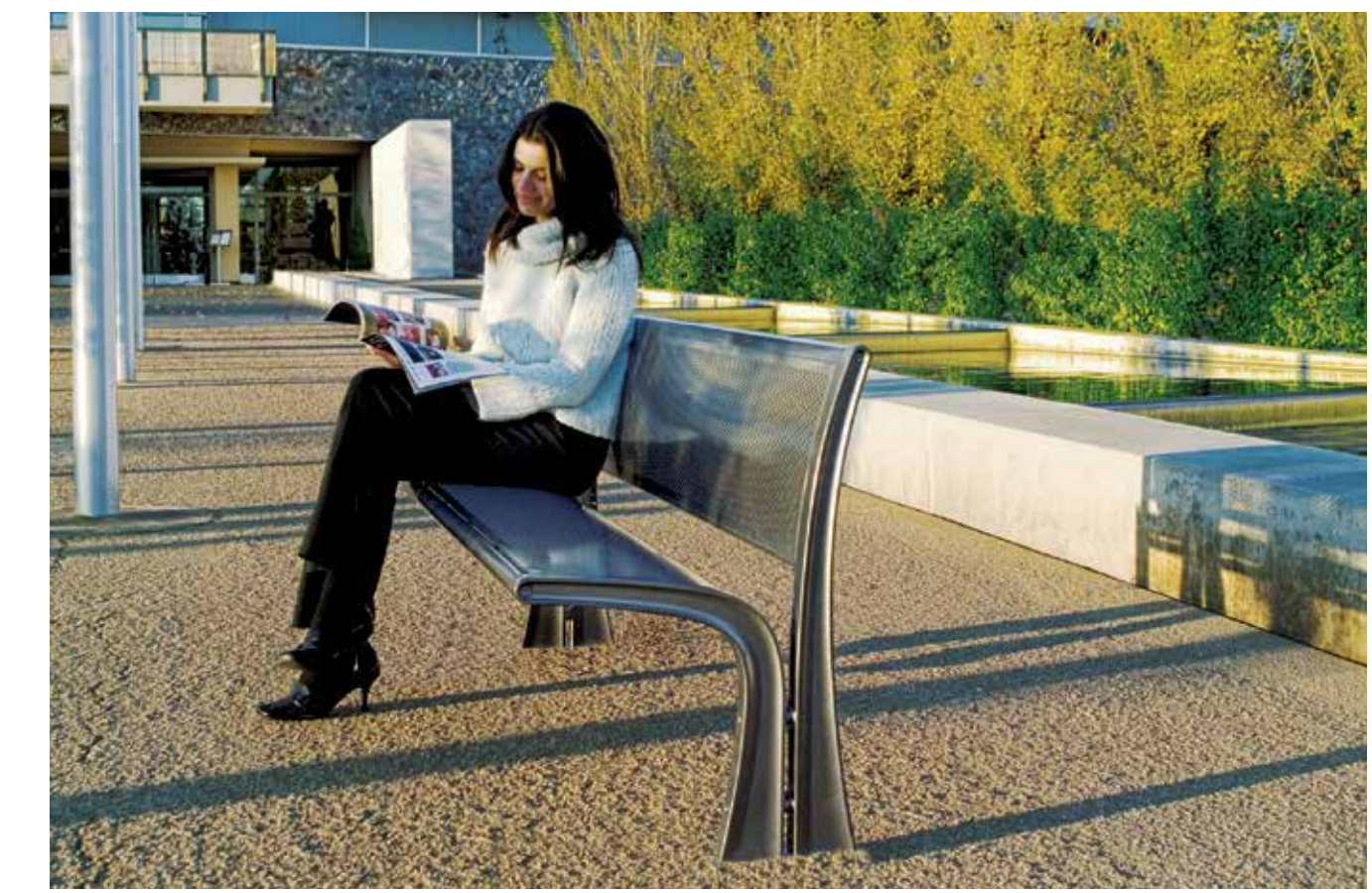
'Dispatch Receptacle' By Forms + Surfaces



'Chipman Table' By Landscape Forms



'Chipman Chairs' By Landscape Forms



'Stay Bench' By Landscape Forms



'Pitch Receptacle' By Landscape Forms

PLAY EQUIPMENT



'Bean Sprout' By Goric



'Rolling Bells' By Goric



'Turning Point' By Goric



'Rodeo' By Goric



'Rotating Dish' By Elephant play



'Eclipse Net Climber' By Landscapae Structures

PUBLIC ART



Interactive public art will be included at the park, with an iconic piece anchoring the entrance to the park at the intersection of Stylus Street and Orion Avenue. The art is envisioned to be dynamic and encourage social interaction. These images represent the type of art that might be included but unique site-specific art will be created for the park.



TREES



Fraxinus oxycarpa - Raywood Ash



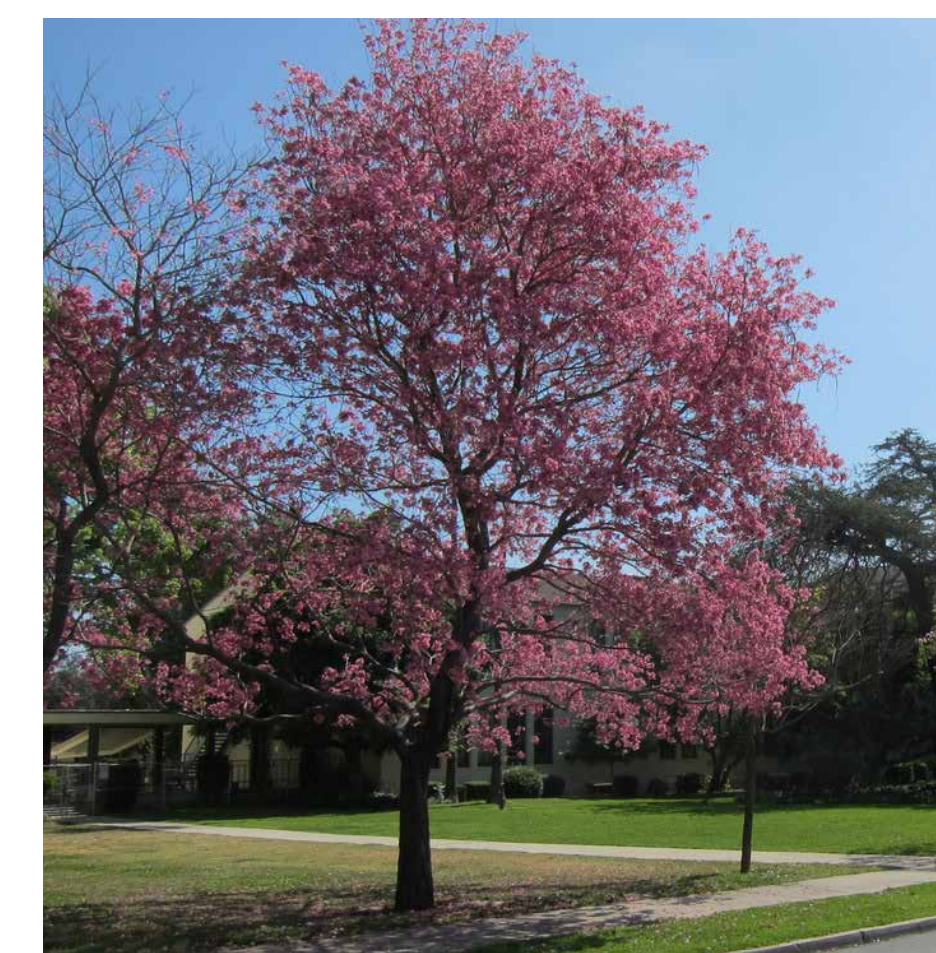
Jacaranda Mimosifolia - Jacaranda



Lagerstromia Indica - Crape Myrtle



Pistacia chinensis - Chinese Pistache



Tabebuia impetiginosa - Tabebuia



Brahea armata - Mexican Blue Palm



Phoenix dactylifera - Date Palm



MILLENNIA NORTHEAST URBAN PARK MATERIALS BOARD

December 12, 2013
Sheet 2 of 5

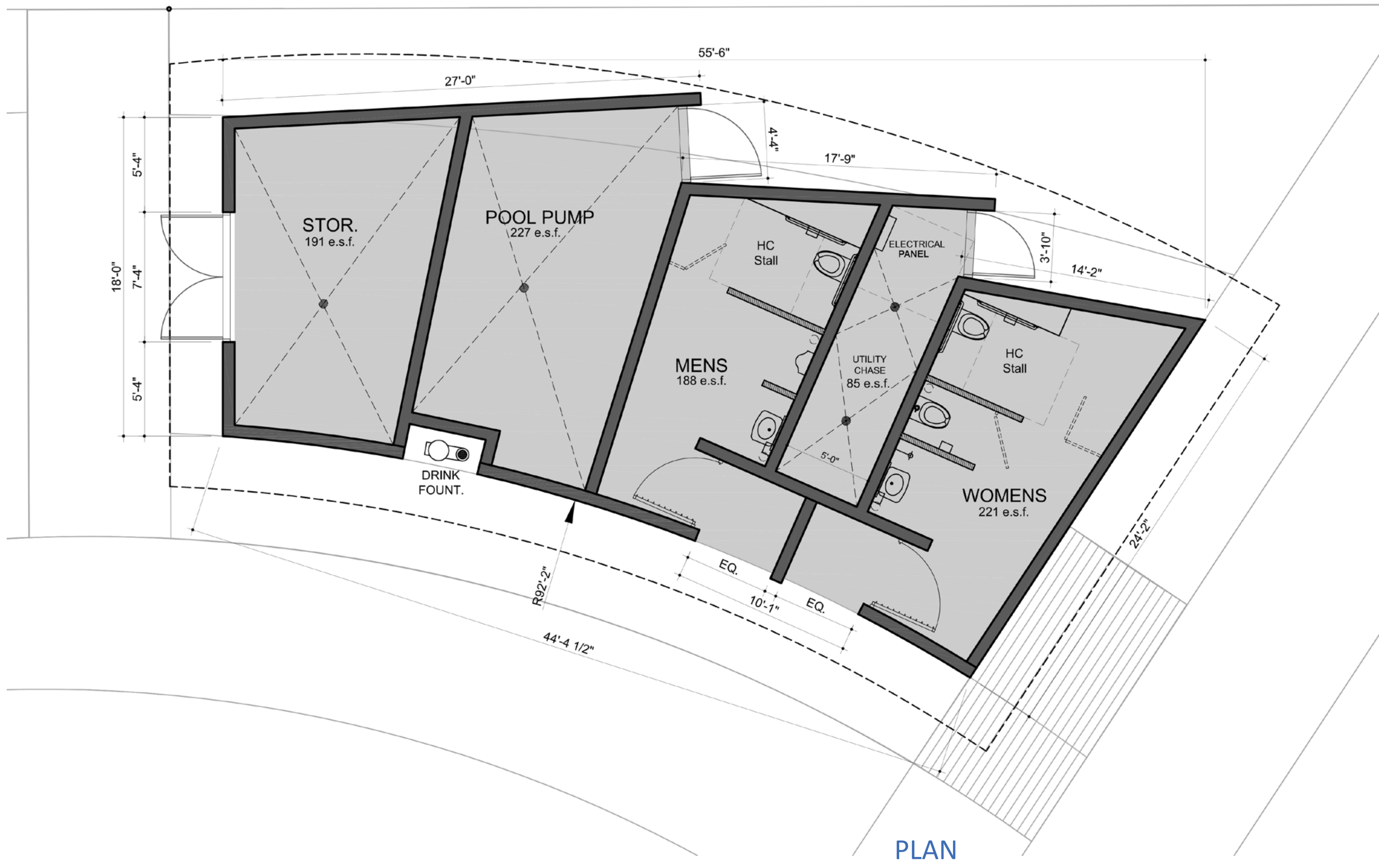
SCHMIDT DESIGN GROUP, INC.

BALANCING ARTISTIC EXPRESSION IN DESIGN
WITH ENVIRONMENTAL SENSITIVITY
2655 Fourth Avenue, San Diego, CA 92103
telephone (619) 236-1462 facsimile (619) 236-8792
www.schmidtgroup.com
Lic. CA 2138, NV 219, AZ 34139

COMFORT STATION CONCEPT

The comfort station at Millenia Northeast Urban Park is designed to be unique and modern, providing all the required uses for a park of this size, including an enclosed pool pump room for easier access. The floor plan hugs the radius of the central plaza reinforcing the "convergence" theme. The men's and women's restrooms front the plaza to visually enhance security. The dividing privacy wall at the entrance to the restrooms provides an opportunity to clearly differentiate between the men's and women's side by utilizing different colors up-lit during dusk and evening hours. Service doors accessing the plumbing chase and fountain equipment rooms on the street (north) side of the building are discreetly tucked behind faceted walls so as to not confuse first time users regarding the restroom entrances. The City storage room is conveniently accessible from the path along the west side of the building.

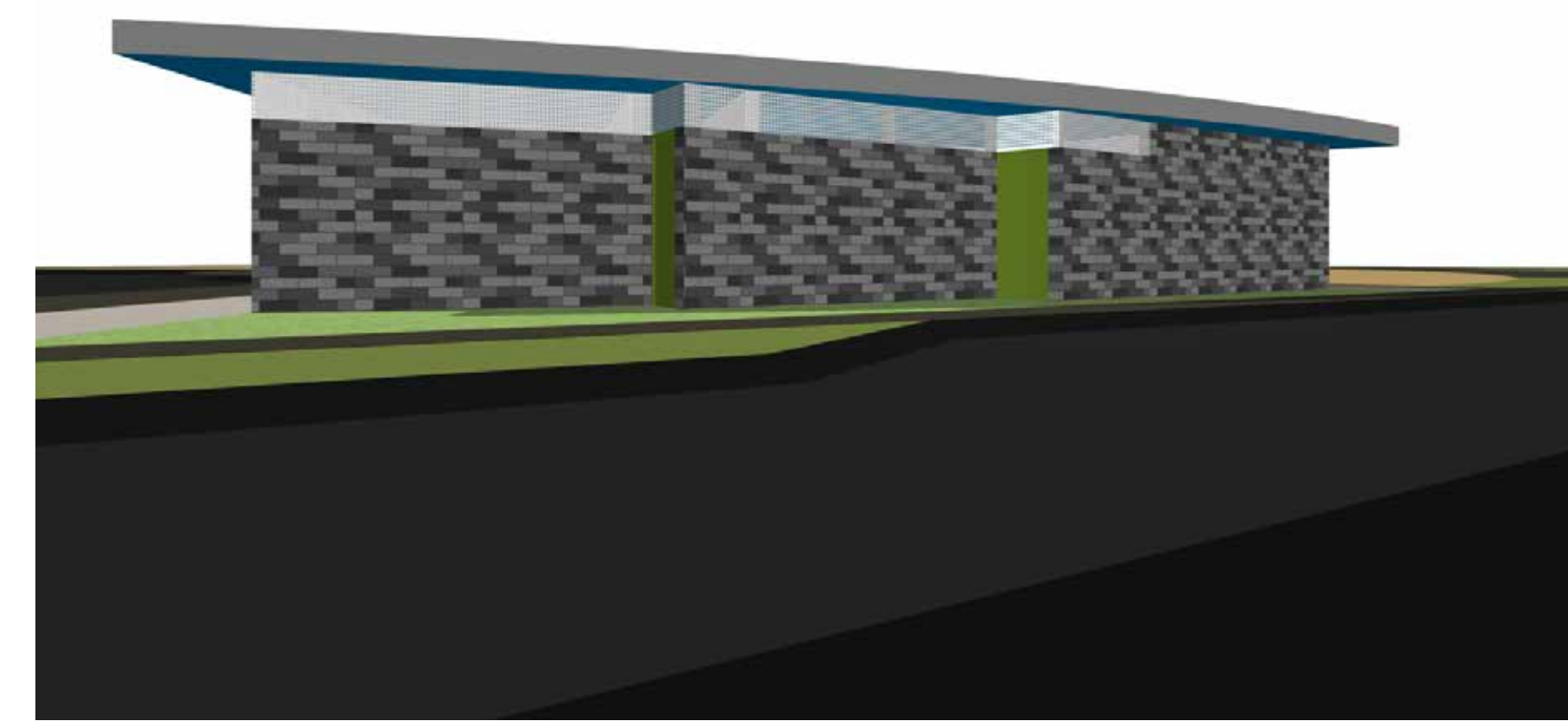
For durability and reduced maintenance purposes, CMU block is proposed for the majority of the building facades, employing a 3 color blend in a palette of dark neutral greys. A clerestory opening between the top of perimeter walls and the underside of the roof will allow for ample natural ventilation and day-lighting. A perforated metal screen in-fill can be included for additional privacy and security. A metal standing seam roof provides a clean and durable roof. The roof would have a slight slope with the high side on the interior radius and dropping 1/2" per foot toward the street, allowing drainage into the adjacent planter and bio-swale.



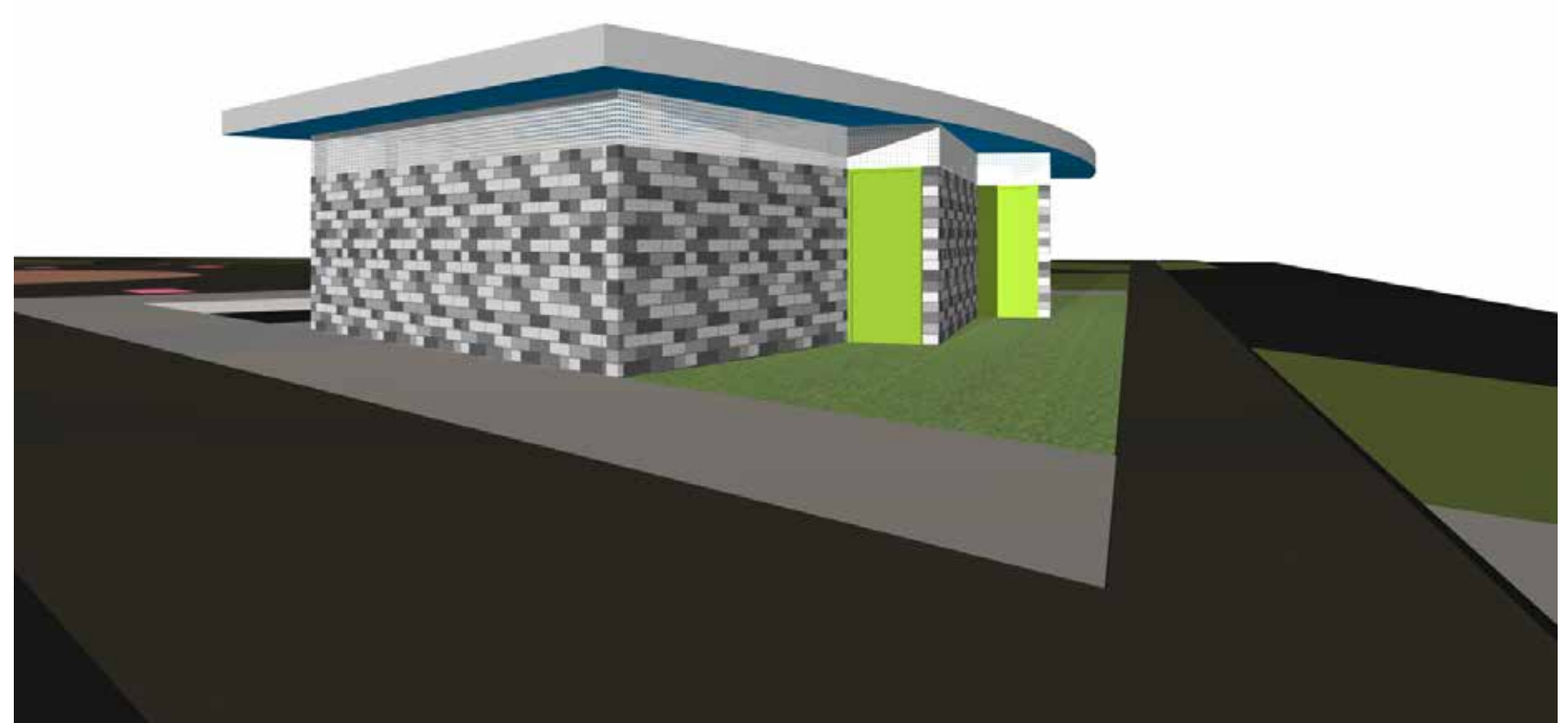
VIEW LOOKING NORTH



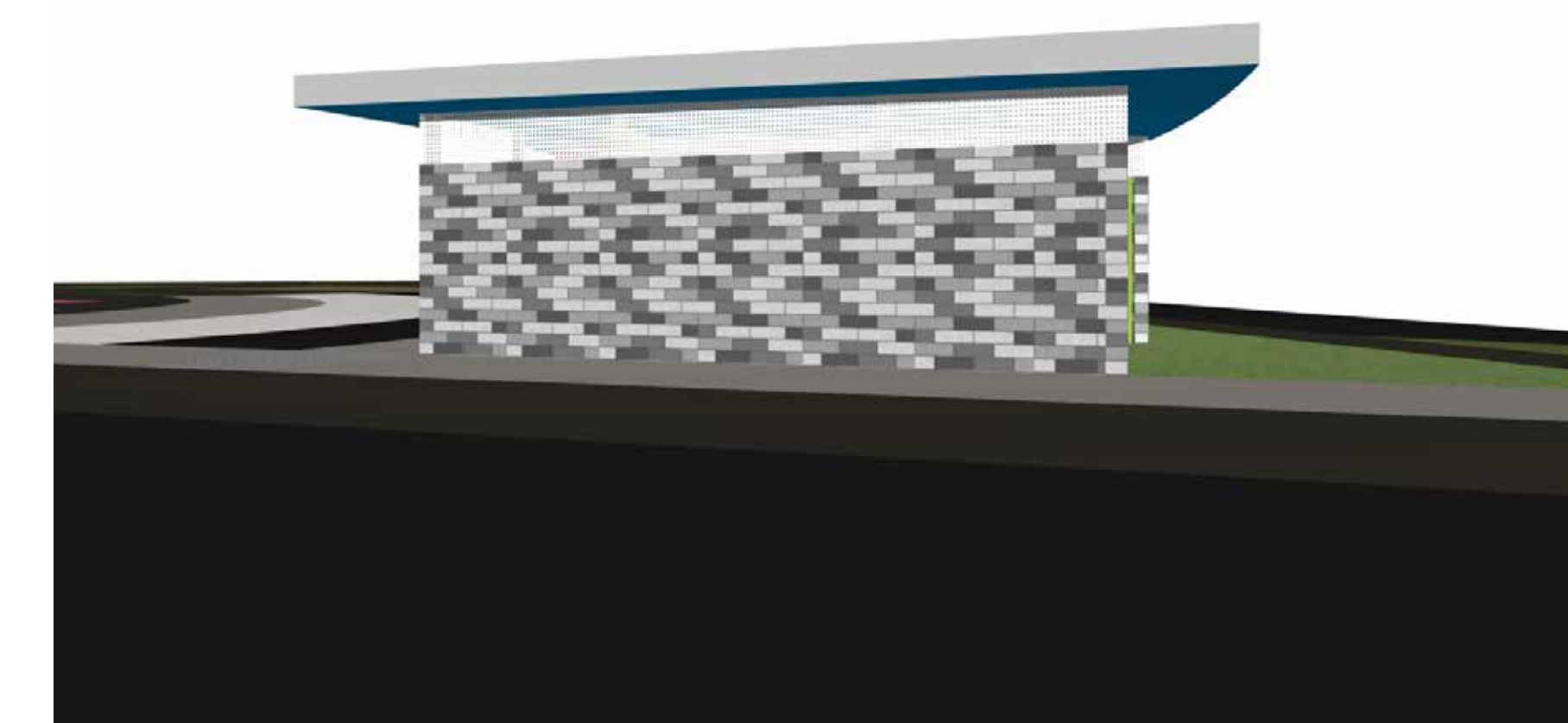
VIEW LOOKING EAST



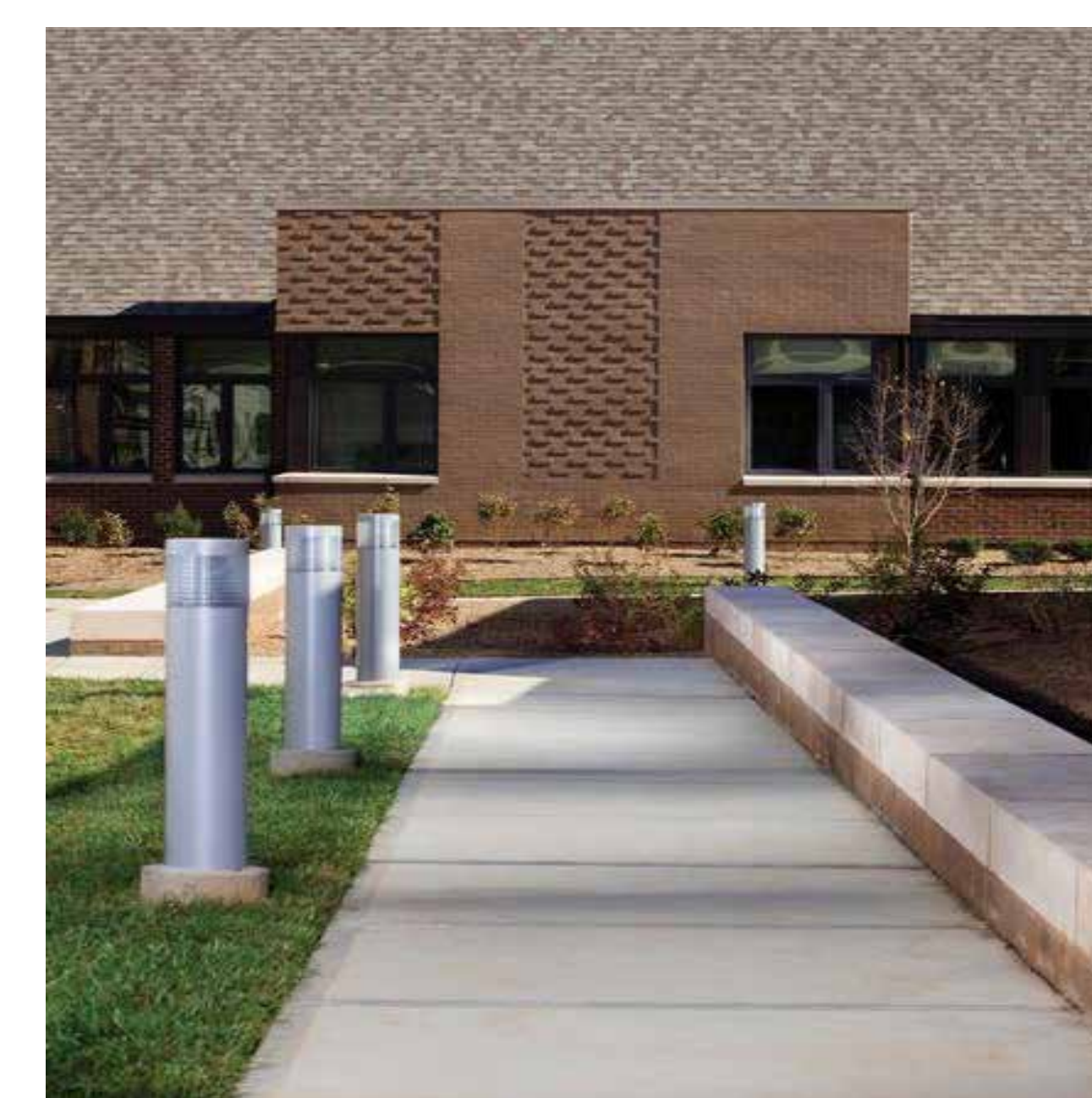
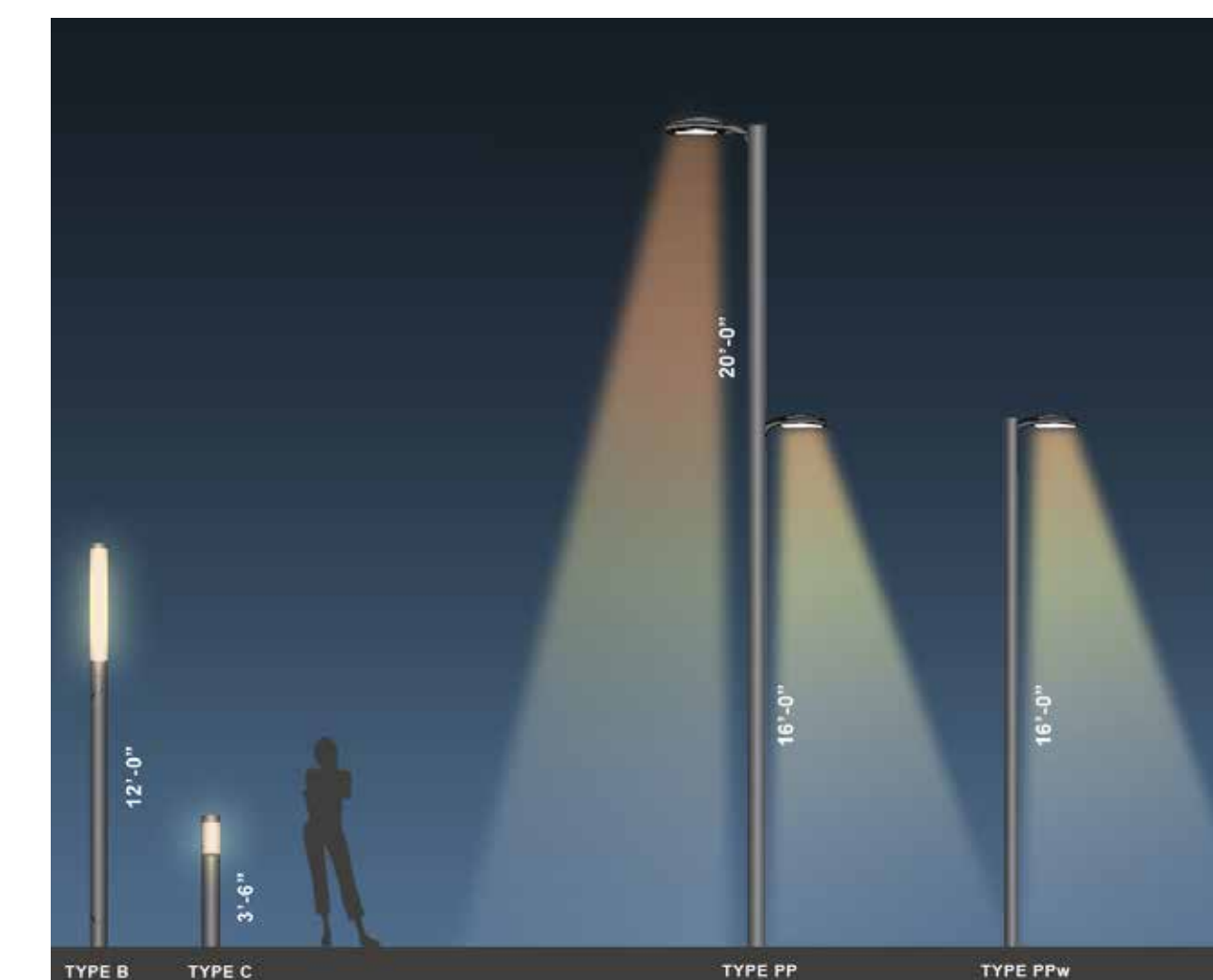
VIEW LOOKING SOUTH



VIEW LOOKING SOUTHWEST



VIEW LOOKING WEST



FIXTURE LEGEND

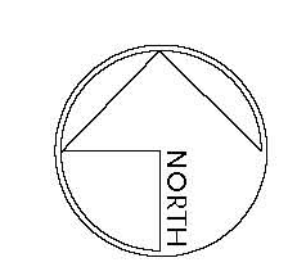
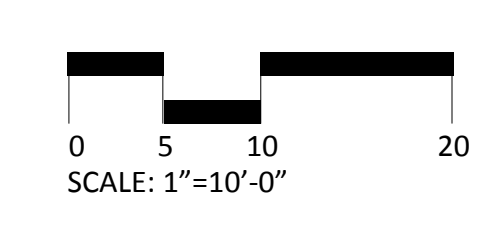
- B** 12'-0" Pedestrian Light Column
- C** 40" Lighted Bollard
- D** Linear LED Striplight at Walls
- E** Trellis Lighting
- F** Flush Mounted LED Uplights at Trees
- PP** Park Promenade Pole (per streetscape plans)
- PPw** Park Promenade Pole - Pedestrian Only

LIGHTING CONCEPT

The lighting design for Millenia Northeast Urban Park will feature modern, elegant fixtures to complement the Convergence design concept. Simple, straight pole and bollard fixtures are the same forms: simple and sleek, creating a rhythm of lighting along main pathways. At the central plaza, the water feature will have integrated lighting, and an array of pedestrian poles around the plaza creates a beautiful gathering spot for evening guests in the park. Small accent lights in the trellises allow for nighttime use of these spaces. Walls flanking the central plaza will have an integral glow to enhance the experience of entering the plaza at night. Perimeter sidewalks will have roadway and pedestrian pole fixtures to provide safe and welcoming spaces.

MILLENIA NORTHEAST URBAN PARK

SITE LIGHTING



LIGHTING DESIGN ALLIANCE

SCHMIDT DESIGN GROUP, INC.
 BALANCING ARTISTIC EXPRESSION IN DESIGN WITH ENVIRONMENTAL SENSITIVITY
 2655 Fourth Avenue, San Diego, CA 92103
 telephone (619) 236-1462 facsimile (619) 236-8792
 www.schmidtgroup.com
 Lic. CA 2138, NV 219, AZ 34139



VIEW LOOKING NORTHEAST



VIEW LOOKING NORTHEAST INTO PLAZA



VIEW LOOKING WEST



VIEW LOOKING NORTH



TUBULAR STEEL CANTILEVERED SHADE STRUCTURE



BIRD'S EYE VIEW

MILLENIA NORTHEAST URBAN PARK
ILLUSTRATIVE PARK RENDER IMAGES



December 12, 2013
 Sheet 5 of 5

SCHMIDT DESIGN GROUP, INC.
 BALANCING ARTISTIC EXPRESSION IN DESIGN
 WITH ENVIRONMENTAL SENSITIVITY
 2655 Fourth Avenue, San Diego, CA 92103
 telephone (619) 236-1462 facsimile (619) 236-8792
 www.schmidtsg.com
 Lic. CA 2138, NV 219, AZ 34139