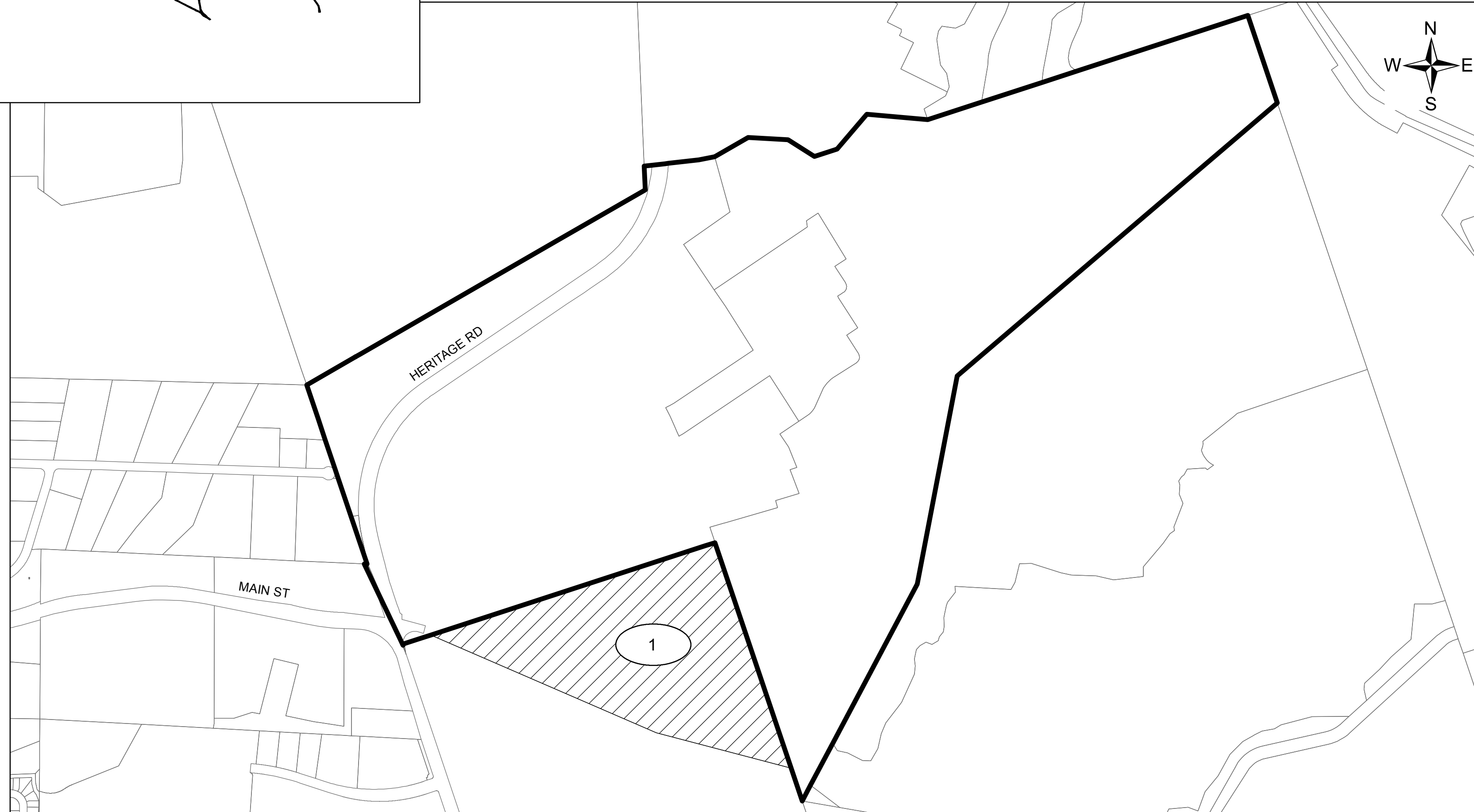
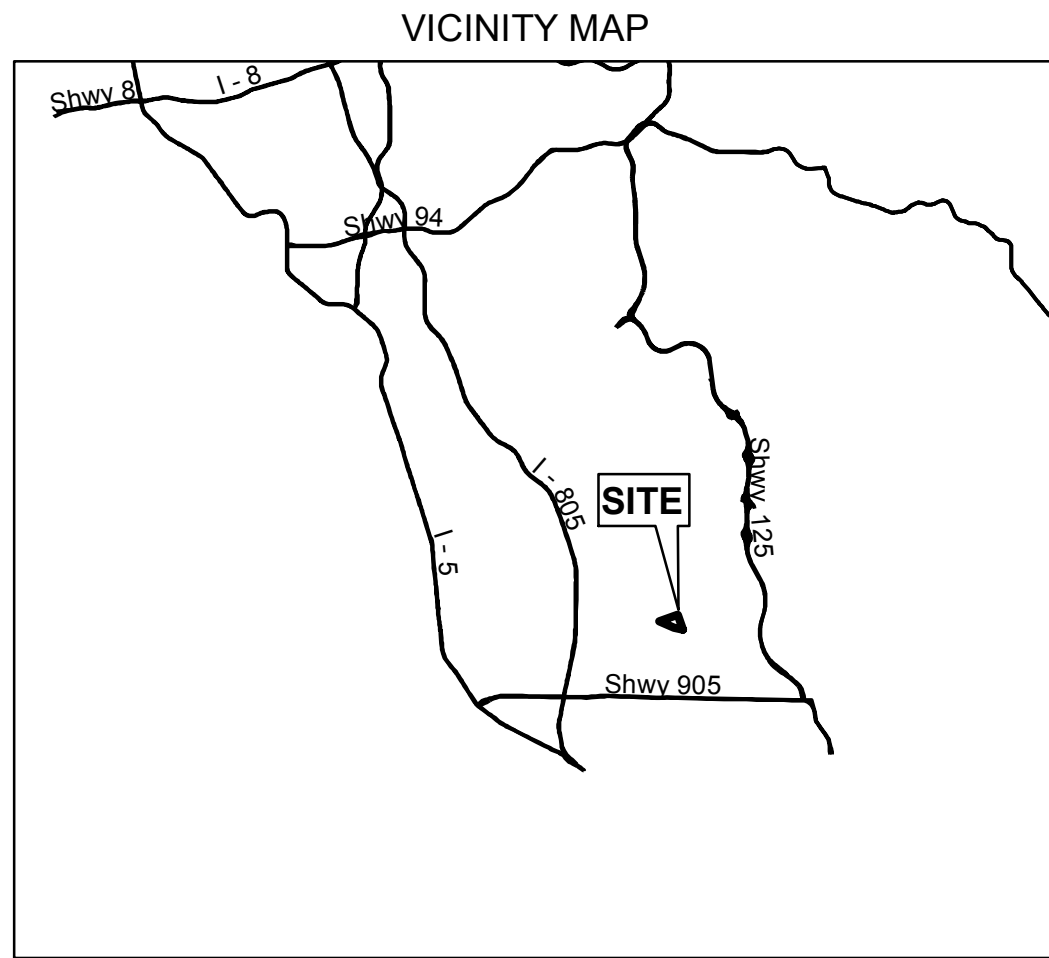


**FUTURE ANNEXATION AREA
COMMUNITY FACILITIES DISTRICT NO. 18M
(OTAY RANCH VILLAGE 3)
CITY OF CHULA VISTA
COUNTY OF SAN DIEGO, STATE OF CALIFORNIA**



FILED IN THE OFFICE OF THE CITY CLERK OF THE CITY OF CHULA VISTA THIS ____ DAY _____, 20__.

CITY CLERK
CITY OF CHULA VISTA
STATE OF CALIFORNIA

I HEREBY CERTIFY THAT THE WITHIN MAP SHOWING PROPOSED BOUNDARIES OF THE FUTURE ANNEXATION AREA COMMUNITY FACILITIES DISTRICT NO. 18M (OTAY RANCH VILLAGE 3) OF THE CITY OF CHULA VISTA, COUNTY OF SAN DIEGO, STATE OF CALIFORNIA, WAS APPROVED BY THE CITY COUNCIL OF THE CITY OF CHULA VISTA AT A REGULAR MEETING THEREOF, HELD ON THE ____ DAY OF _____, 20__, BY ITS RESOLUTION NO. _____.

CITY CLERK
CITY OF CHULA VISTA
STATE OF CALIFORNIA


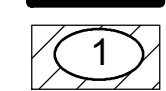
FILED THIS ____ DAY OF _____, 20__ AT THE HOUR OF ____ O'CLOCK __M. IN BOOK _____ PAGE ____ OF MAPS OF ASSESSMENT AND COMMUNITY FACILITIES DISTRICTS IN THE OFFICE OF THE COUNTY RECORDER IN THE COUNTY OF SAN DIEGO, CALIFORNIA.

COUNTY RECORDER
COUNTY OF SAN DIEGO
STATE OF CALIFORNIA

THE LINES AND DIMENSIONS OF EACH LOT OR PARCEL ENCOMPASSED BY THIS MAP SHALL BE THOSE LINES AND DIMENSIONS AS SHOWN ON THE SAN DIEGO COUNTY ASSESSOR'S MAPS.

THE SAN DIEGO COUNTY ASSESSOR'S MAPS SHALL GOVERN FOR ALL DETAILS CONCERNING THE LINES AND DIMENSIONS OF SUCH LOTS OR PARCELS.

Legend

-  DISTRICT BOUNDARY
-  FUTURE ANNEXATION AREA

MAP REFERENCE NUMBER	ASSESSOR'S PARCEL NUMBER
1	644-060-13-00

