



HEALTHY CHULA VISTA
ADVISORY COMMISSION

OUR FIRST YEAR

Chair Ana Melgoza
Commissioner Diana Milburn

VISIT CITY'S YOUTUBE CHANNEL



Healthy Choices

*Where We Live,
Learn, Work & Play*

Episode 2:

**Chula Vista Health
Advisory
Commission**

WHERE WE'VE BEEN

- High Tech High School
- Lauderbach Park
- Norman Park Senior Center
- CV Promise Parent Resource Center
- South Branch CV Library



WHO WE HAVE MET

- Sustainability Commission
- Housing Advisory Commission
- CVPD Homeless Outreach Team
- Norman Park Senior Center Walking Group
- Centers for Disease Control Racial and Ethnic Approaches to Community Health (CDC REACH)
- Promise Neighborhood Resident Leaders



WHAT WE HAVE LEARNED



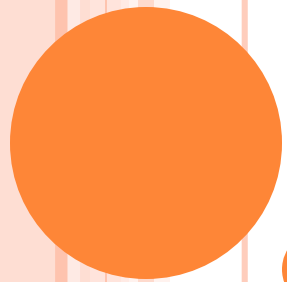
- Chula Vista Elementary School District BMI Study
- Regional Homeless Count
- County HHSA Health Data
- Hospital Community Health Needs Assessment
- Measure P
- Glenner Center Town Square
- We Are CV Campaign
- Community Health Messaging



POLICY ADVISING

- Kids Choice CV
- Vending Machine Policy
- Age-Friendly Communities & Livability
- Water Stewardship Plan





ISSUES OF CONCERN

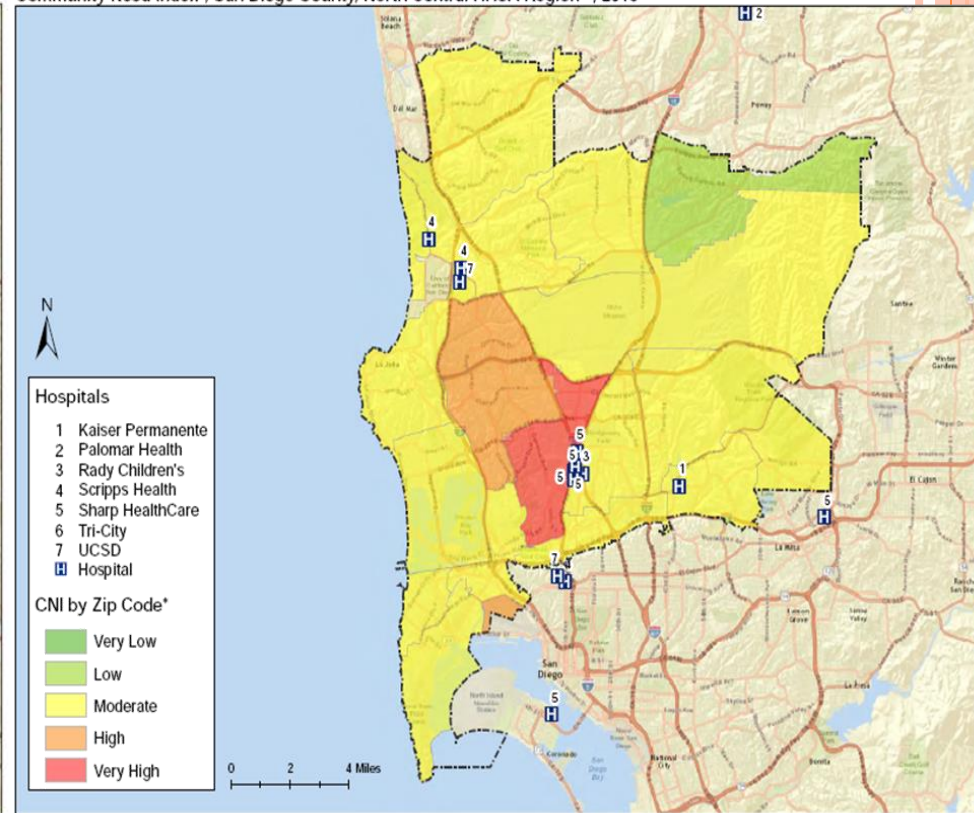
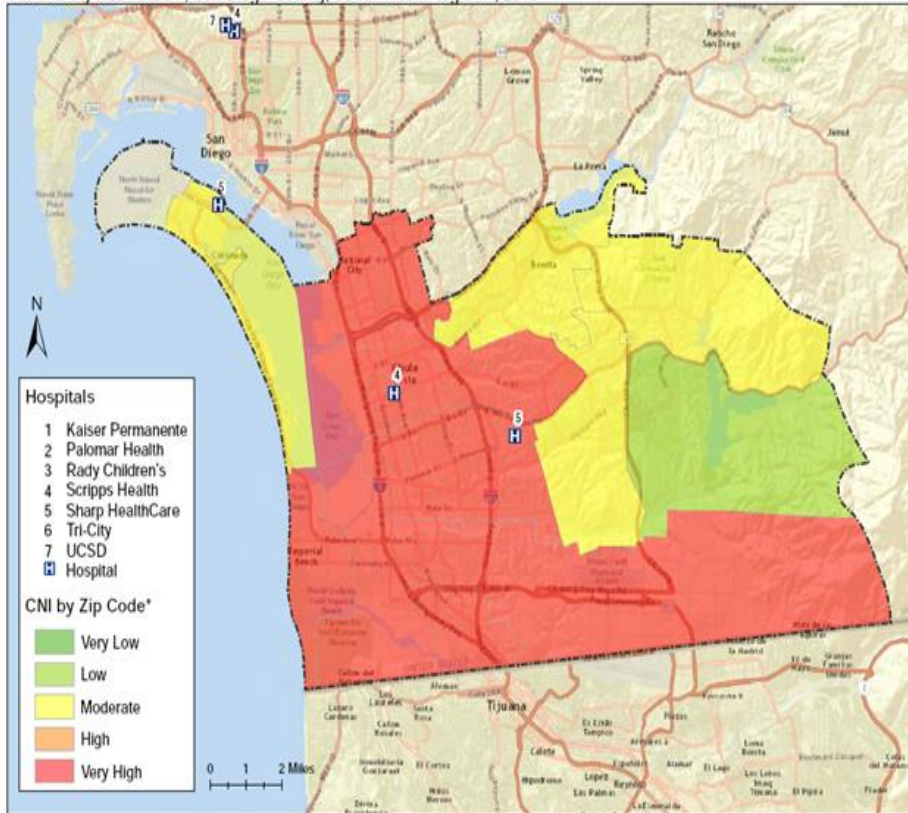
IMPACTED EMERGENCY ROOMS

Southwest San Diego

North Central San Diego

Community Need Index*, San Diego County, South HHS Region**, 2013

Community Need Index*, San Diego County, North Central HHS Region**, 2013



Data Source: *Dignity Health; **SanGIS;
 Basemap: © 2015 OpenStreetMap contributors, and the GIS User Community.

Data Source: *Dignity Health; **SanGIS;
 Basemap: © 2015 OpenStreetMap contributors, and the GIS User Community.

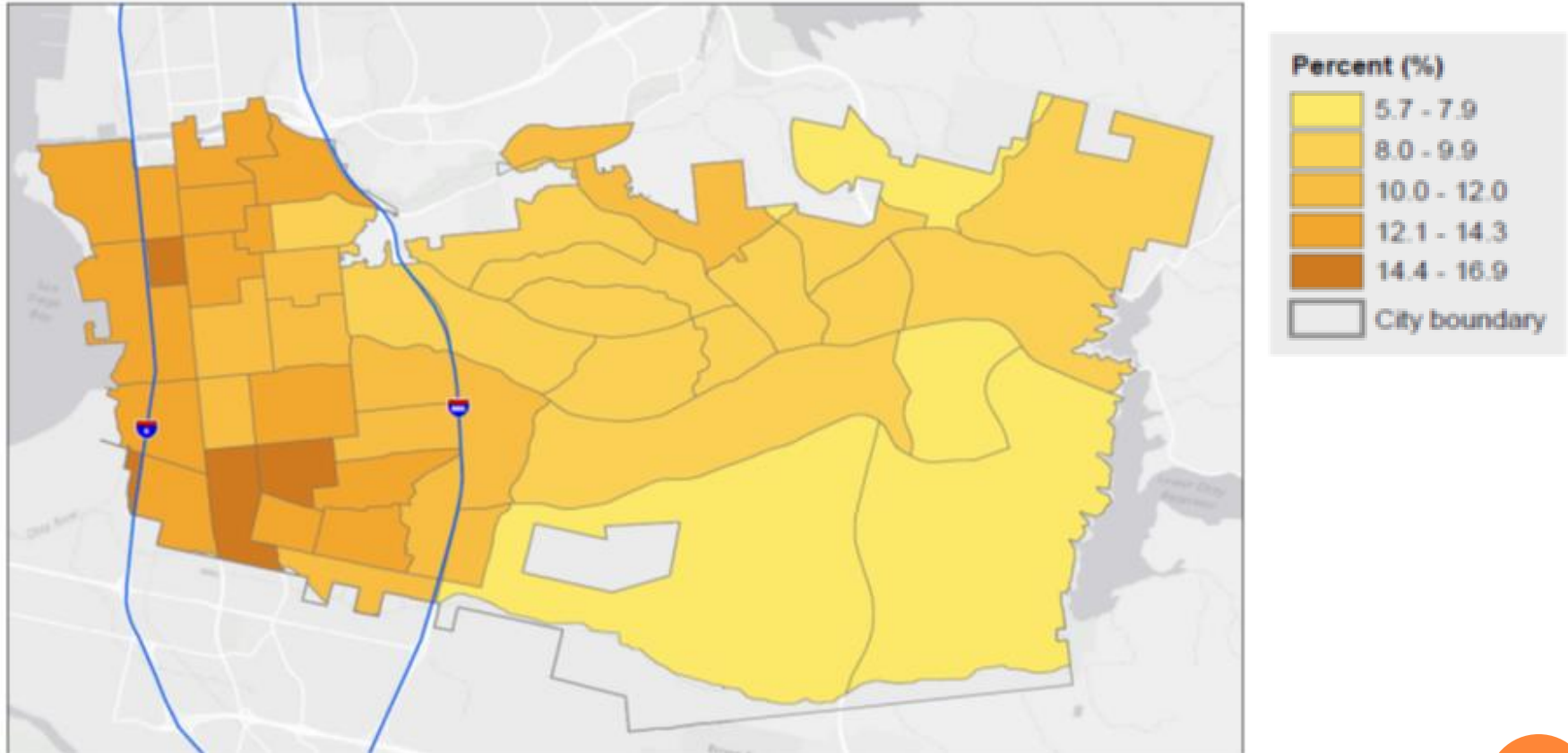


3 hospitals

8 hospitals

DIABETES

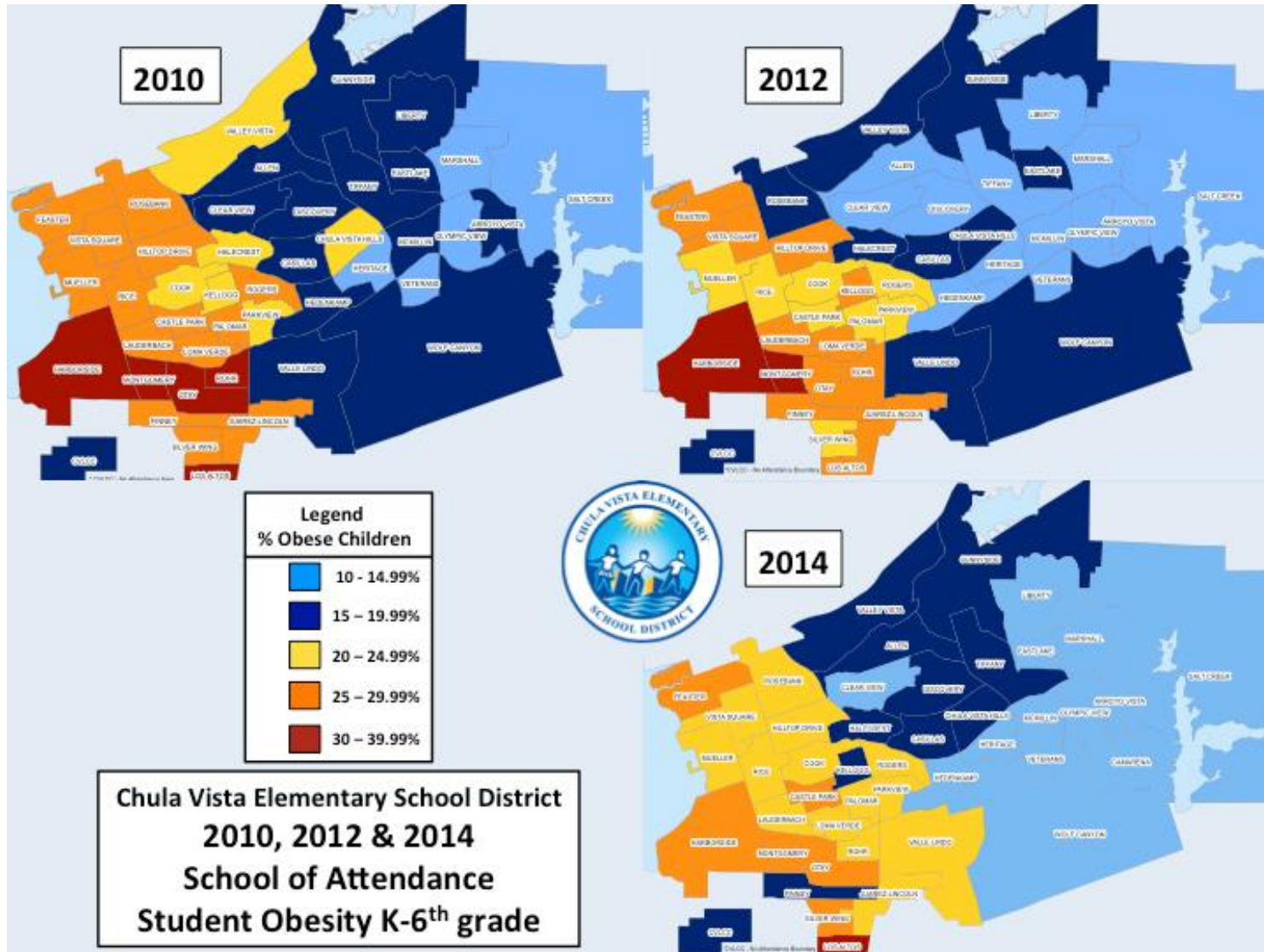
Diagnosed diabetes among adults aged ≥ 18 years
by census tract, Chula Vista, CA, 2014



Most census tracts in western CV $>10\%$



OBESITY IN YOUTH



FUTURE FOCUS AREAS

POLICY & PROGRAMS

- **Age-Friendly/Livability**
- **Healthy Food Access**

EDUCATION & AWARENESS

- **Mental Health**
- **Diabetes**

COLLABORATION & PARTNERSHIPS

- **School District - Nutrition**
- **Services - Vulnerable Populations**

DATA ANALYSIS & ADVOCACY

- **Impacted Emergency Rooms/Hospital Beds**

