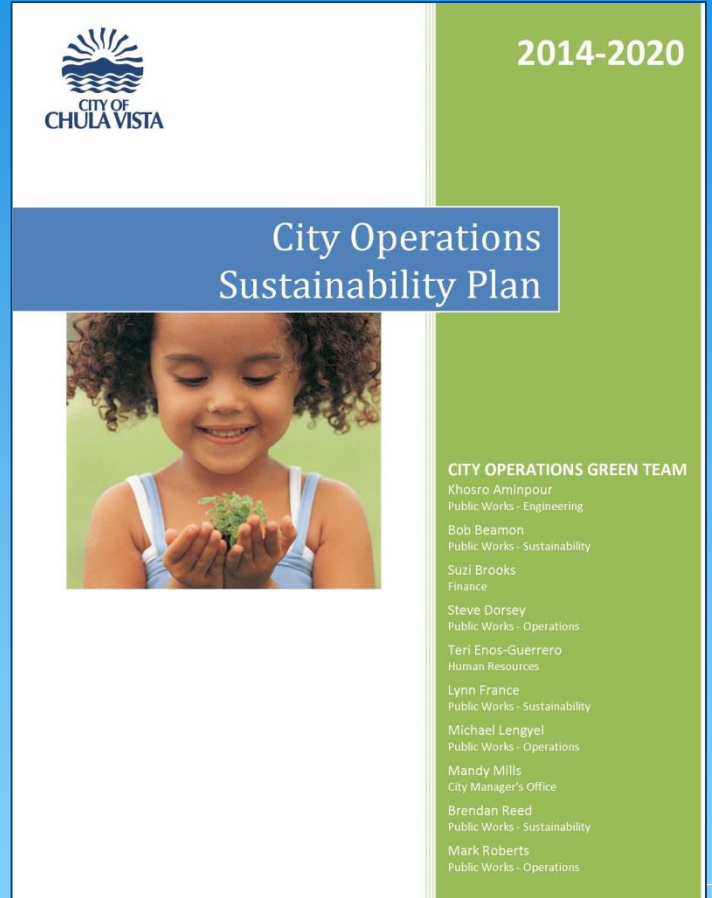


# CITY OPERATIONS SUSTAINABILITY PLAN UPDATE 2016



**Clean Air, Clean Water, & Clean Land**

# City Operations Green Team



Team Member	Department	Role
Lynn France	Economic Development – Office of Sustainability	Team Lead
Barbara Locci	Economic Development – Office of Sustainability	Team Lead
Alejandro Ruiz- Velasco	Economic Development – Office of Sustainability city energy and water	Member
Boushra Salem	PW – Storm Water	Member
Suzi Brooks	Finance – Purchasing	Member
Steve Dorsey	PW – Fleet Manager	Member
Steve Knapp	PW – Ops. Administration	Member

# Sustainability Definition



At an organizational level, “Sustainability” is defined as the City’s ability to **provide high quality infrastructure, services, and programs** in a manner, which **balances the social, economic, and environmental needs** of current and future generations.

# Sustainability Vision & Mission



Through a continuous improvement framework, the City of Chula Vista strives to “lead by example” in **integrating innovative sustainable practices throughout its operations** helping to ensure clean air, water, and land in the community.

# The Business Case



- \* Lower utility costs
- \* Lower fuel costs
- \* Lower maintenance costs
- \* Healthier, more comfortable workspaces
- \* Happier, more productive employees
- \* Lower GHG emissions
- \* And...

**CLEAN AIR, CLEAN WATER, & CLEAN LAND!**



# City Operations Sustainability Plan



\* Creates goals & strategies in 7 focus areas...

Energy Use

Water Use


Green Purchasing

Waste Management

Pollution Prevention

Transportation

Green Buildings & Infrastructure

 DRAFT Chula Vista – City Operations Sustainability Plan (DRAFT – 3/28/14) 7

**EXISTING POLICIES & DOCUMENTS**

*100% Clean Fleet Policy (2008 - Climate Action Plan)*

- All replacement vehicles purchased for the municipal fleet should be hybrid or alternative fuel.
- Factors such as the appropriateness for the vehicle task, fueling infrastructure, petroleum displacement, and the overall cost and environmental benefit must be considered prior to purchasing each replacement vehicle.

*City-Contracted Clean Fleet Policy (2008 - Climate Action Plan)*

- Work with fleets under City authority to influence their expanded use of hybrid and/or alternative fuels.

**6. TRANSPORTATION**

Alternative transportation helps improve local air quality, reduce traffic congestion, and is typically a more cost-effective way to commute. In addition, these transportation options help reduce employee stress and improve their well-being.

**Goal 1:**  
Transition 40% of fleet to hybrid or other alternative fuel technology by 2020.

**Goal 2:**  
Increase the percentage of employees who are regularly using sustainable commute options to 30% by 2020.

Baseline Year: 2013  
Partnerships: iCommute San Diego  
San Diego Regional Clean Cities  
San Diego County Bicycle Coalition

**Strategies:**

1. Install electric vehicle chargers for fleet use.
2. Designate preferred parking spaces for carpool/alternative fuel vehicles at all major municipal facilities.
3. Install outdoor bike lockers for employee use.
4. Initiate a pre-tax transit reimbursement program.
5. Expand the use of alternative work schedules and teleworking through supervisor and employee outreach.

**Performance Metrics:**

- % of alternative fuel/hybrid vehicles in fleet
- % of employees alternatively commuting (per pay period)

**FUNDING OPPORTUNITIES**

- CA Energy Commission grants
- CA Clean Vehicle Rebate Program
- CalTrans Bike Locker Program



**EXISTING POLICIES & DOCUMENTS**

*Municipal Building Energy Efficiency Policy (2005)*

**Energy Efficiency**

- New buildings should maximize passive cooling and heating.
- New and renovated buildings (>4,500 sf) should be at least 20% more efficient than State code.
- Existing buildings should be retrofitted with more efficient technologies (as available).
- Only purchase EPA ENERGY STAR qualified appliances and products.

**Renewable Energy**

- New and renovated buildings should incorporate onsite renewable energy.
- Overall goal is to meet at least 20% of energy demand with onsite renewable energy.
- Up to 100% of purchased electricity should be renewable (if costs are equal or less than conventional electricity).

**FUNDING OPPORTUNITIES**

- Local Government Partnership with SDG&E and CA Public Utilities Commission
- CA Energy Commission loans
- CSCDA Sustainable Energy Bond program
- Municipal Utility Reinvestment Fund (proposed)

**1. ENERGY USE**

The City of Chula Vista spends approximately \$3 million annually on electricity and natural gas use at municipal facilities. Energy management efforts help to reduce these long-term utility costs and associated greenhouse gas emissions, while typically improving building performance and occupants’ health and comfort.

**Goal:**

Reduce municipal energy use by 20% by 2020 through energy efficiency and renewable energy initiatives.

Baseline Year: 2010

Partnerships: DOE Better Buildings Challenge  
EPA Green Power Partnership  
SDG&E Local Government Partnership

**Strategies:**

1. Implement all cost-effective energy efficiency upgrades, such as the Multi-Site Lighting Upgrade project.
2. Retro-commission all municipal buildings that are greater than 20,000 square feet and more than 10 years old to improve energy performance.
3. Establish a Municipal Utility Reinvestment Fund (using previous utility cost savings) to create a revolving mechanism for funding energy improvements.
4. Purchase 100% renewable energy for the City’s facilities under Direct Access contracts.
5. Transition to “Zero Net Energy” design for all new municipal facilities.

**Performance Metrics:**

- Annual kWh and Therm usage
- Energy use intensity (MMBTU/square foot)
- % onsite renewable energy

\* Summarizes existing policies & programs

\* Outlines potential funding sources

\* List performance metrics



# Financial Funding Examples



- \* Plan outlines a variety of internal and external potential funding sources per focus area...

## **ENERGY FUNDING OPPORTUNITIES**

- Local Government Partnership with SDG&E and CA Public Utilities Commission
- CA Energy Commission loans
- CSCDA Sustainable Energy Bond program
- Municipal Utility Reinvestment Fund (Proposed)

## **WASTE MGMT FUNDING OPPORTUNITIES**

- AB 939 fee on solid waste services
- Free service provided by Republic Services to City facilities
- CalRecycle grants



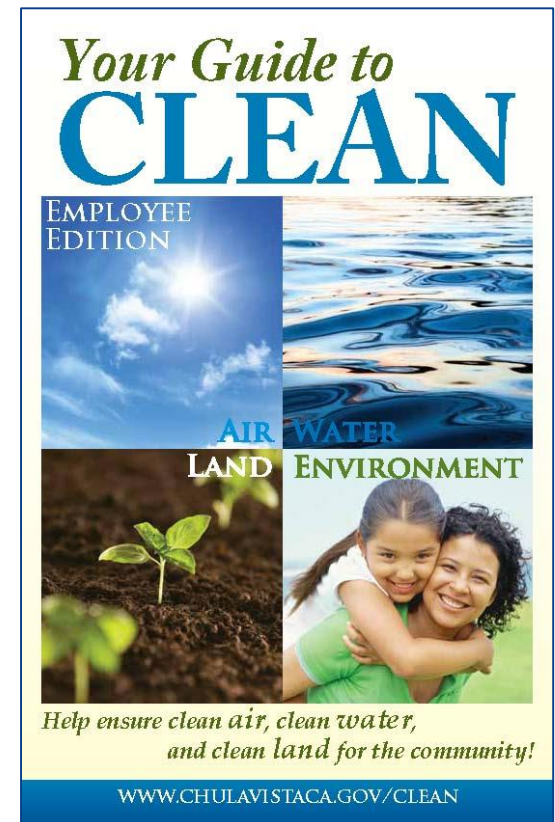
# Employee Engagement & Monitoring



## EMPLOYEE ENGAGEMENT

City leaders and employees will be frequently engaged through:

- Employee Lunch & Learns (Quarterly)
- New Hire Orientation (Ongoing)
- Green Teams (Ongoing)
- Employee Surveys (Annual)
- CLEAN Employee Award (Annual)
- Plan Progress Reports (Annual)



# Our Big Goals



## 2016 Status

- |  |  |
|--|--|
| • Reduce <b>energy</b> use by 20% by 2020                              | 29.6% ✓  |
| • Reduce <b>potable water</b> use by 10% by 2020                       | 30.1% ✓  |
| • 80% of all office and custodial <b>purchases</b> are “green” by 2020 | 70% Office Depot purchases 35% custodial purchases ✓ |
| • 75% <b>recycling rate</b> by 2020                                    | 67%  |

# Our Big Goals



## 2016 Status

- Prevent all **non-storm water discharges** from city facilities by June 15
- Comply with **BMP requirements** and **pass inspections with a score of 80%** by 2020
- **40% of city fleet** transitioned to hybrid or alternative fuel technology
- Increase the % of employees using **sustainable commute options to 30%** by 2020



**36%**

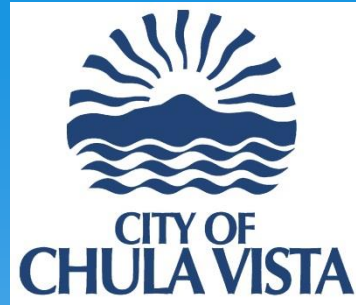
**10%**

# Our Big Goals



## 2016 Status

- |   |   |
|---|---|
| <ul style="list-style-type: none"><li>• At least <b>2 existing buildings</b> will be operated to meet <b>enhanced green building standards</b> by 2020</li></ul>            | LEED –<br>EBOM City<br>Hall 2017          |
| <ul style="list-style-type: none"><li>• Integrate sustainable design concepts and products in infrastructure projects by 2020 using <b>Envision</b> tool.</li></ul>         | Beginning<br>employee<br>training<br>2016 |
| <ul style="list-style-type: none"><li>• All <b>new buildings</b> over 10,000 sf will be designed and constructed to meet enhanced <b>green building standards</b></li></ul> | None<br>built yet                         |



# Questions?



**Clean Air, Clean Water, & Clean Land**

## Our Big Goals – Status Update

## 2016 Status

- Reduce energy use by 20% by 2020 29.6% ✓
- Reduce potable water use by 10% by 2020 30.1% ✓
- 80% of all office and custodial purchases are “green” by 2020 70% Office Depot purchases
- 75% recycling rate by 2020 67%
- Prevent all non-storm water discharges from city facilities by June 15 Done ✓
- Comply with BMP requirements and pass inspections with a score of 80% by 2020 Done ✓
- 40% of city fleet transitioned to hybrid or alternative fuel technology 36%
- Increase the % of employees using sustainable commute options to 30% by 2020 10%
- At least 2 existing buildings will be operated to meet enhanced green building standards by 2020 LEED – EBOM City Hall 2017
- Integrate sustainable design concepts and products in infrastructure projects by 2020 using Envision tool. Beginning employee training
- All new buildings over 10,000 sf will be designed and constructed to meet enhanced green building standards None built yet