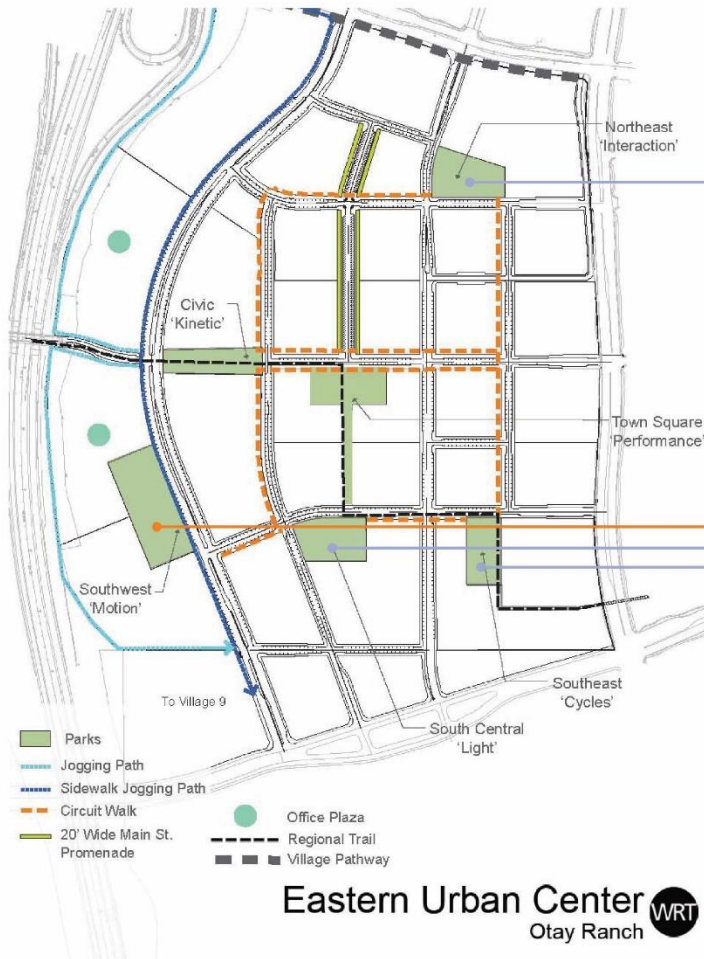




Development Services Department



MILLENIA PARK MILLENIA P6 MASTER PLAN CHULA VISTA, CA



MILLENNIA PARK

- COMFORT STATION with STORAGE
- COMMUNITY PLAZAS
- BICYCLE PARKING
- SHADED PICNIC & BBQ AREA
- DESIGNATED ADA PARKING
- JOGGING TRAIL
- PLAY AREAS:
 - TOT LOT
 - NATURE PLAY
- MULTIPURPOSE HARD COURTS:
 - TENNIS with ADAPTIVE STRIPING
 - BASKETBALL with ADAPTIVE STRIPING
- MULTIPURPOSE FIELD with BERMED SEAT WALL
- FIXED BENCHES and MOVABLE TABLES & CHAIRS

STYLUS PARK

- COMFORT STATION
- COMMUNITY PLAZA
- SHADE STRUCTURE/TRELLIS
- PICNIC AREA
- SPLASH PAD
- DOG RUN
- PLAY AREA/TOT LOT
- BOCCIE COURTS
- MOVABLE TABLES & CHAIRS
- FLEXIBLE LAWN

ORION PARK

- COMFORT STATION
- COMMUNITY PLAZA
- SHADE STRUCTURE/TRELLIS
- PICNIC AREA
- WATER FEATURE
- DOG RUN
- PLAY AREA/TOT LOT
- TERRACED SEATING

STRATA PARK

- COMFORT STATION
- COMMUNITY PLAZA
- SHADE STRUCTURE/TRELLIS
- PICNIC AREA
- PORCH SWINGS
- FLEXIBLE FITNESS AREA
- FLEXIBLE LAWN
- GAME/ACTIVITY AREAS
- COMMUNITY GARDEN
- MOVABLE TABLES & CHAIRS



Tennis Court
Adaptive Striping



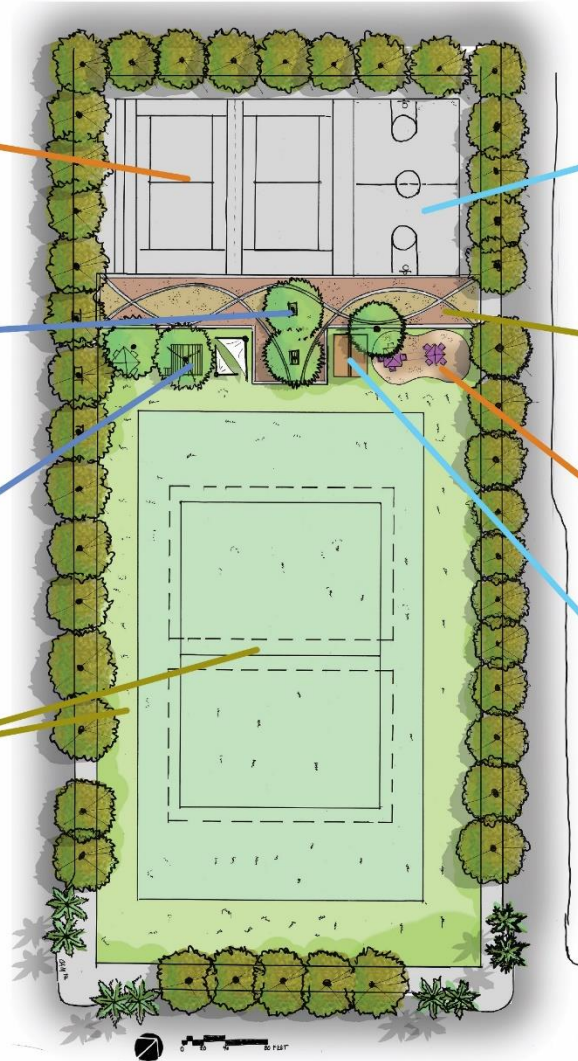
Specimen
Shade Trees



Natural Play



Open Lawn &
Soccer Field



Basketball Court
Adaptive Striping



Enhanced Paving



Playground



Restroom/Storage/Art



Site Furnishings



Trio Bench by Forms + Surfaces



Trio Table by Forms + Surfaces



Chipman Chairs by Landscape Forms



Chipman Table by Landscape Forms



Pitch Receptacles by Landscape Forms

Play Equipment



Nature Play - Grassy Berms



Nature Play - Boardwalk



Nature Play - Large Climbing Boulders



Nature Play - Nature's Instrument



Tot Lot - Landscape Structures



Tot Lot - Landscape Structures

Public Art (Alt.)



Legacy Art Feature - Mosaic



Legacy Art Feature - Mosaic



Shade Sculpture

Activity



Enlivened Community Park



Adaptive Striping



Groundcovers



Pt. Sal Spreader Sage



Fortnight Lily



Carmel Creeper Ceanothus



California Gray Rush



Yarrow



Canyon Prince Wild Rye

Shrubs



Indian Mallow



Evergreen Currant



Centennial Coyote Brush



Tornleaf Goldeneye



Red Yucca



Lindheimer's Muhly Grass

Trees



King Palm (Off-site)



Desert Willow



Jacaranda



Southern Magnolia



Medjool Date Palm (Off-site)



Coast Live Oak



Holly Oak



Cork Oak











Concept Narrative:

Millenia Park's concept is inspired by peris+toral.arquitectes' vibrant neighborhood park in Badalona, Spain. Badalona Park is full of life, energy and motion at all times of day and night. This is due to the broad spectrum of users the park serves. Surrounded by a variety of diverse land uses, Millenia Park will become a hub of activity for neighborhood students, Millenia residents, tourists, young professionals, retirees and regional park lovers from all around San Diego. Scale, connectivity, community engagement, active and passive recreation, and sustainable practices are paramount here. Adaptively striped sport courts and a generous multipurpose field provide ample flexible space for the occasional pick-up game or tournament, while two plazas serve as gathering spaces for meet-up groups and young professionals on break.





Two play areas, one Tot Lot and one Nature Play area for ages 5–12, strategically flank the main plaza space. Parents can relax in the plaza while their children enjoy both clearly visible play areas. At the Nature Play area, curious visitors can learn about water conservation by walking along the wetland. Water conservation is key, so the park will use an automatically controlled, low-flow, reclaimed water irrigation system. The park's primary circulation and orientation are designed to provide clear visibility through the park and pedestrian connectivity at designated crossing areas. Large shade trees will grow into a dappled canopy in the main plaza. On the groundplane, the legacy mosaic can give each new Millenia generation a hand in the creation and ownership of the Park.



Legend:

- | | |
|--|--|
|  <i>Archontophoenix cunninghamiana</i> / King Palm (Off-site only)
14" BTH |  <i>Platanus x acerifolia</i> 'Columbia' / Columbia Plane Tree
24" BOX |
|  <i>Chilopsis linearis</i> / Desert Willow
24" BOX |  <i>Quercus ilex</i> / Holly Oak
24" BOX |
|  <i>Jacaranda mimosifolia</i> / Jacaranda
24" BOX |  <i>Quercus suber</i> / Cork Oak
24" BOX |
|  <i>Phoenix dactylifera</i> / Medjool Date Palm (Off-site Only)
14" BTH |  <i>Magnolia grandiflora</i> / Southern Magnolia
24" BOX
(36" BOX Specimen for Plaza) |

LOT 19

-  Low shrubs and groundcover, such as: *Agave attenuata*, *Arctostaphylos* spp., *Dietes* spp., *Festuca* spp., *Juncus* spp., *Phormium* spp., *Rhamnus* spp., *Ribes* spp., *Salvia* spp.
-  Grassy berms and play areas: Turf shall be hybrid Bermuda variety 'Sahara' or 'Bull's Eye' and installed by seeding, sodding, or another acceptable method.
-  Multipurpose Field: Turf shall be a hybrid Bermuda variety or Paspalum and installed by sodding, or another acceptable method.
-  Bioswale shrubs, such as: *Carex* spp., *Iris* spp., *Juncus* spp., *Leymus* spp., *Salix* spp.

LOT 18

- 1 Comfort Station—See Exhibit B for Options
- 2 Trash Enclosure
- 3 Low Grassy Berms for Spectating and Rest
- 4 Main Entry Plaza with Flexible Seating Area
- 5 Point of Connection at Designated Crossing
- 6 Passive Seating Area with Grassy Berms
- 7 Main Plaza with Open Versatile Space
- 8 Tennis Courts with Adaptive Striping
- 9 Basketball Court with Adaptive Striping
- 10 Add Alternate—Legacy Public Art Mosaic
- 11 Tot Lot with Resilient Surfaces
- 12 Nature Play Area—Boulders and Play Structure
- 13 Rentable Shaded Picnic Area
- 14 Standard Gray Concrete with Custom Scoring
- 15 Jogging Trail — AC Paving with 6" Mow Curbs
- 16 Lawn Step/Seat Wall
- 17 Engineered Wetland
- 18 Maintenance Vehicle Parking Stall
- 19 Dense Hedge at Tot Lot for Separation from Pvt. Drive
- 20 Multipurpose Field
- 21 Regulation Height Fence at Tennis and Basketball Ct.
- 22 Flush Access Entry to Soccer Field
- 23 Accessible Parking Stall per Calltrans Standard
- 24 Bicycle Racks
- 25 Enhanced Plantings at Key Park Gateways
- 26 Flow-through Planters per Millenia Ph. 2 Onsite Plans
- 27 Reclaimed Water Point of Connection
- 28 Preliminary Irrigation Mainline Layout



BIRD'S-EYE LOOKING SOUTH



BIRD'S-EYE LOOKING EAST



MAIN PLAZA



SPORT COURTS + NATURE PLAY



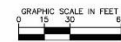
ENTRY PLAZA



Concept Narrative:

The lighting concept for Millenia Park strives to echo the park's theme of "motion". Simple, modern pole lights punctuate the long main promenade drawing visitors from the entry plaza at the northeast corner of the site to the main plaza at the heart of the park. Throughout the length of the secondary pedestrian path, the pole lights provide a clear visibility across the park from Millenia Avenue to the adjacent development. Along the outer ring of the park, overhead lights activate the jogging path and encourage residents and visitors of the park to enjoy an evening stroll.

Note: For reference only. This exhibit is not an official photometric study.



Path Lighting
Philips Lumec, or similar



Plaza Lighting
Rincon, or similar



Millenia Park

Chula Vista, CA

EQUIPMENT LAYOUT

INCLUDES:

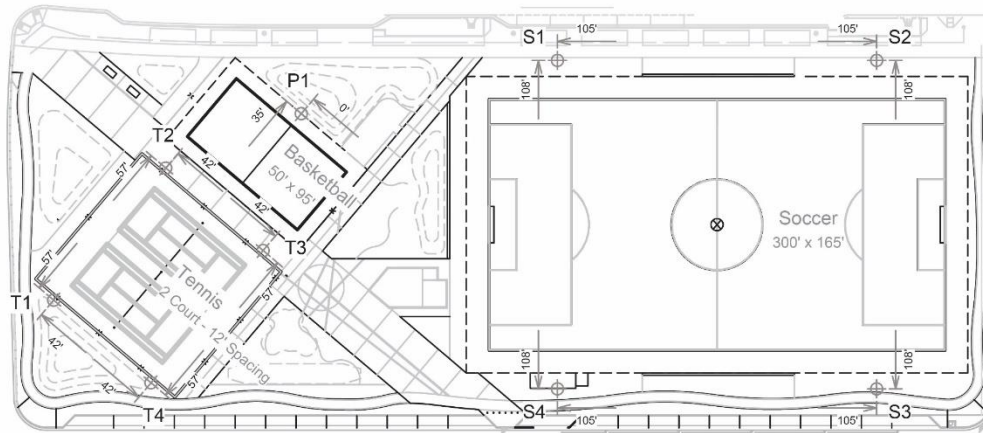
- Basketball
- Soccer
- Tennis

Electrical System Requirements: Refer to Amperage Draw Chart and/or the "Musco Control System Summary" for electrical sizing.

Installation Requirements: Results assume $\pm 3\%$ nominal voltage at line side of the driver and structures located within 3 feet (1m) of design locations.

SINGLE LUMINAIRE AMPERAGE DRAW CHART

Ballast Specifications (.90 min power factor)	Line Amperage Per Luminaire (max draw)						
	208 (60)	220 (60)	240 (60)	277 (60)	347 (60)	380 (60)	480 (60)
Single Phase Voltage	208 (60)	220 (60)	240 (60)	277 (60)	347 (60)	380 (60)	480 (60)
1500 watt MZ	8.6	8.3	7.5	6.5	5.1	4.7	3.7



Note: Sport lighting is not in the current budget, and is not proposed at this time. The proposed concept aims to include only conduits for future lighting installation during the initial construction of the park.

SCALE IN FEET 1 : 100



Pole location(s) + dimensions are relative to 0,0 reference point(s) ⊗

ENGINEERED DESIGN By: Daniel Lohman • File #187351A • 14-Dec-17



Not to be reproduced in whole or part without the written consent of Musco Sports Lighting, LLC. ©1981, 2017 Musco Sports Lighting, LLC.






KEY NOTES

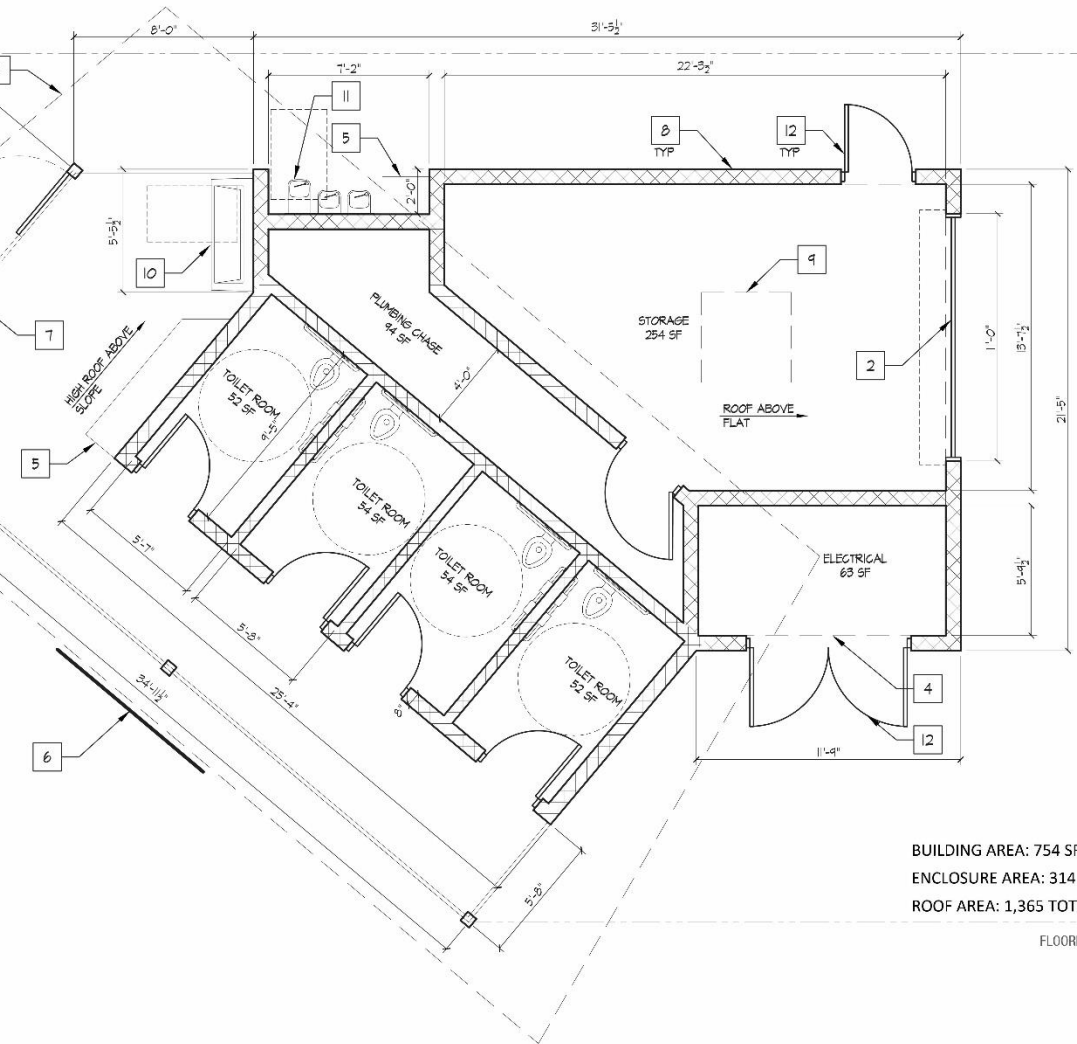
- 1 METAL ENCLOSURE
- 2 OVERHEAD COILING DOOR
- 3 3:12 SLOPE METAL STANDING SEAM ROOF
- 4 1/4:12 FLAT PVC ROOF
- 5 WOOD BENCH
- 6 METAL SIGN
- 7 SWINGING METAL GATE
- 8 CMU PARAPET ABOVE
- 9 48X48 UNIT SKYLIGHT
- 10 MULTI-STATION MONOLITHIC SINK
- 11 HI-LO DRINKING FOUNTAIN WITH PET FOUNTAIN
- 12 HOLLOW METAL DOOR

GENERAL NOTES

1. 1/2" DIA PERFORATED METAL PANELS FOR VENTILATION ABOVE WALLS OF TOILET ROOMS.
2. FLOORS SLOPED TO DRAIN AT TOILET ROOMS AND STORAGE.
3. 8" THICK CONCRETE BLOCK AT EXTERIOR WALLS AND LOAD BEARING WALLS. 6" THICK CONCRETE BLOCK AT NON-BEARING INTERIOR WALLS.

LEGEND

- CMU WALLS 
- ROOF PERIMETER ABOVE 
- HARDSCAPE PERIMETER 



BUILDING AREA: 754 SF
ENCLOSURE AREA: 314 SF
ROOF AREA: 1,365 TOTAL SF



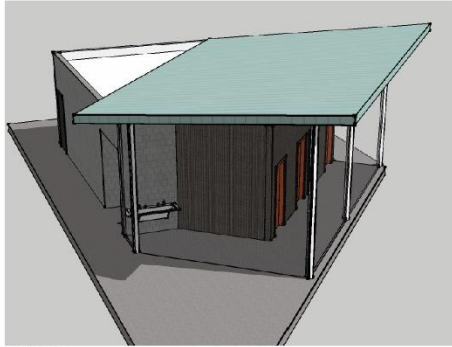
FLOORPLAN - NOT TO SCALE



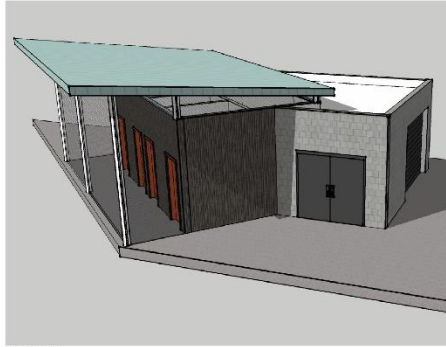
SOUTHWEST



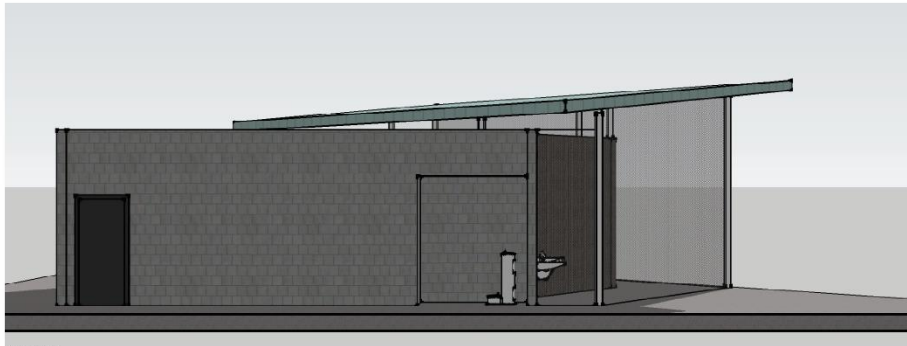
NORTHWEST



PERSPECTIVE



PERSPECTIVE



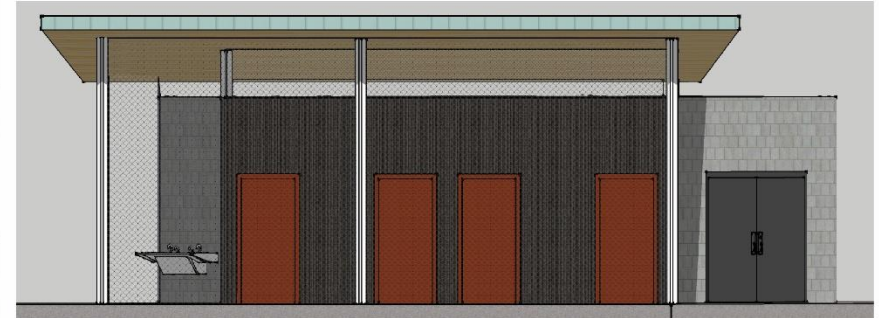
NORTHEAST

Concept Narrative:

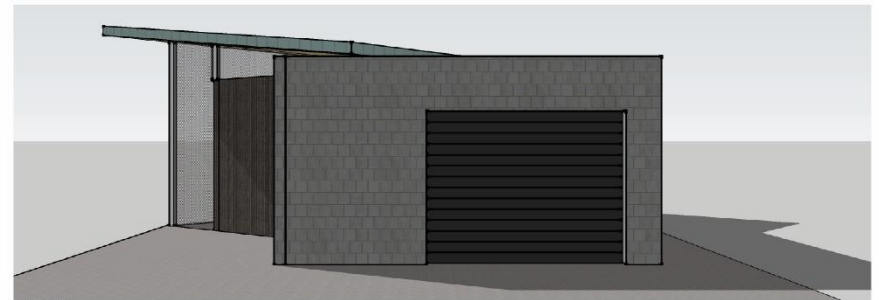
The comfort station building at Millenia Park serves as a focal point and landmark that anchors the dynamic activities throughout the park. The high standing seam roof structure and vibrant colors draw park user's attention, while the orientation of access is clearly defined along the wide public plaza. The building itself is composed of two opposing masses that provide two opposing functions. The simple and modern volumes clearly denote separate public and private facilities use areas, with the aid of contrasting concrete block textures, door colors, integrated signage, and the large, lockable open gate to the enclosed outdoor restroom area.

This restroom area utilizes the temperate climate of Chula Vista with a shared outdoor sink and benches, along with four unisex accessible toilet rooms. This area is enclosed with metal grid fence up to the roof canopy above, potentially becoming more dense toward the ground to provide some visual privacy. The large roof overhang and fencing is supported with exposed structural steel columns. The same metal fencing and columns are utilized to provide passive ventilation and daylight above the CMU walls of the toilet rooms. Exterior LED lights recessed into the underside of the planar roof provide lighting throughout the day and night when needed. Additionally, an aluminum letter sign is integrated along the top of the enclosure to beautifully identify the park and aid in wayfinding.

While the public facing front of the building is inviting and bright, the Storage and Electrical room are set back and generally face away from the main plaza area. The large colling service door and wide pair of hollow metal doors provide easy access to these facilities, along with providing more than adequate storage to serve this park's facilities and maintenance requirements. The hidden-from-view flat roof over these areas helps emphasize the clean lines of this volume. A large skylight illuminates the Storage room throughout the day. Overall, this building aims to be a functional keystone serving this metropolis park, while providing a vibrant identity and sculptural interest.



SOUTHEAST



SOUTHEAST



Development Services Department



MILLENIA PARK MILLENIA P6 MASTER PLAN CHULA VISTA, CA