

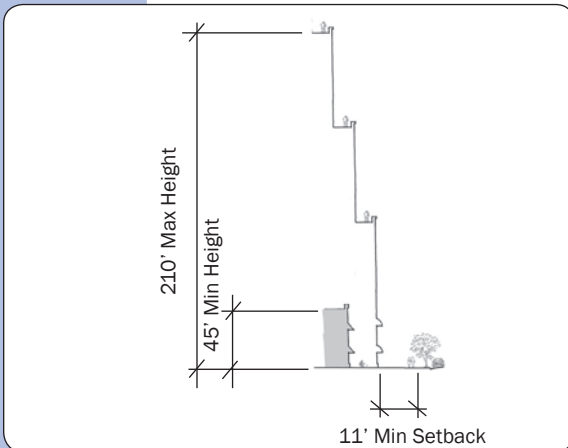
UC-15 E Street Trolley

(Transit Focus Area)

Primary land uses: Mixed-Use Residential; Residential; Retail; Office (not allowed on ground floor facade, except for access); Hospitality

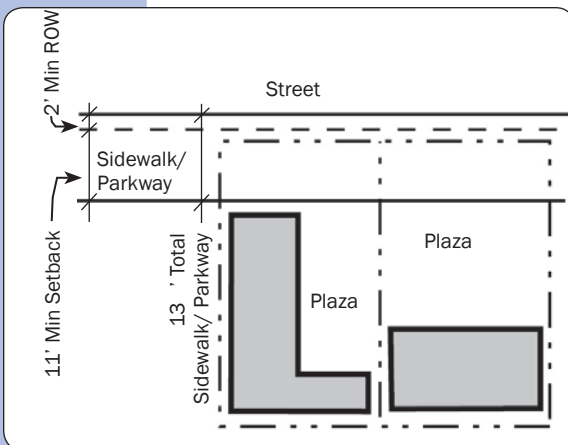
Urban Regulations

1. **Floor Area Ratio:**
Min: 4.0 Max: 6.0
2. **Building Height:**
Min: 45' Max: 210'
3. **Building Stepback:**
Not mandatory
4. **Street Wall Frontage:** N/A
5. **Setbacks:**
Street Min: 11'* Street Max: N/A
(*Applies only along E Street between I-5 and 300' east of I-5)
6. **Open Space Requirement:** 100 sf/du



Section View

Fig. 6.44



Plan View

Fig. 6.45

Parking Regulations

1. **Parking Locations:**
Any location on-site, except in front of buildings
2. **Residential Parking:**
Min: 1 space/du
Guest: 0 spaces
On-site Min: 100%
3. **Non-Residential Parking:**
Min: 1 space/1,000 sf
On-site Min: None

Summary sheet does not reflect all regulations that may apply to each property. Please consult the remainder of the chapter for all criteria.