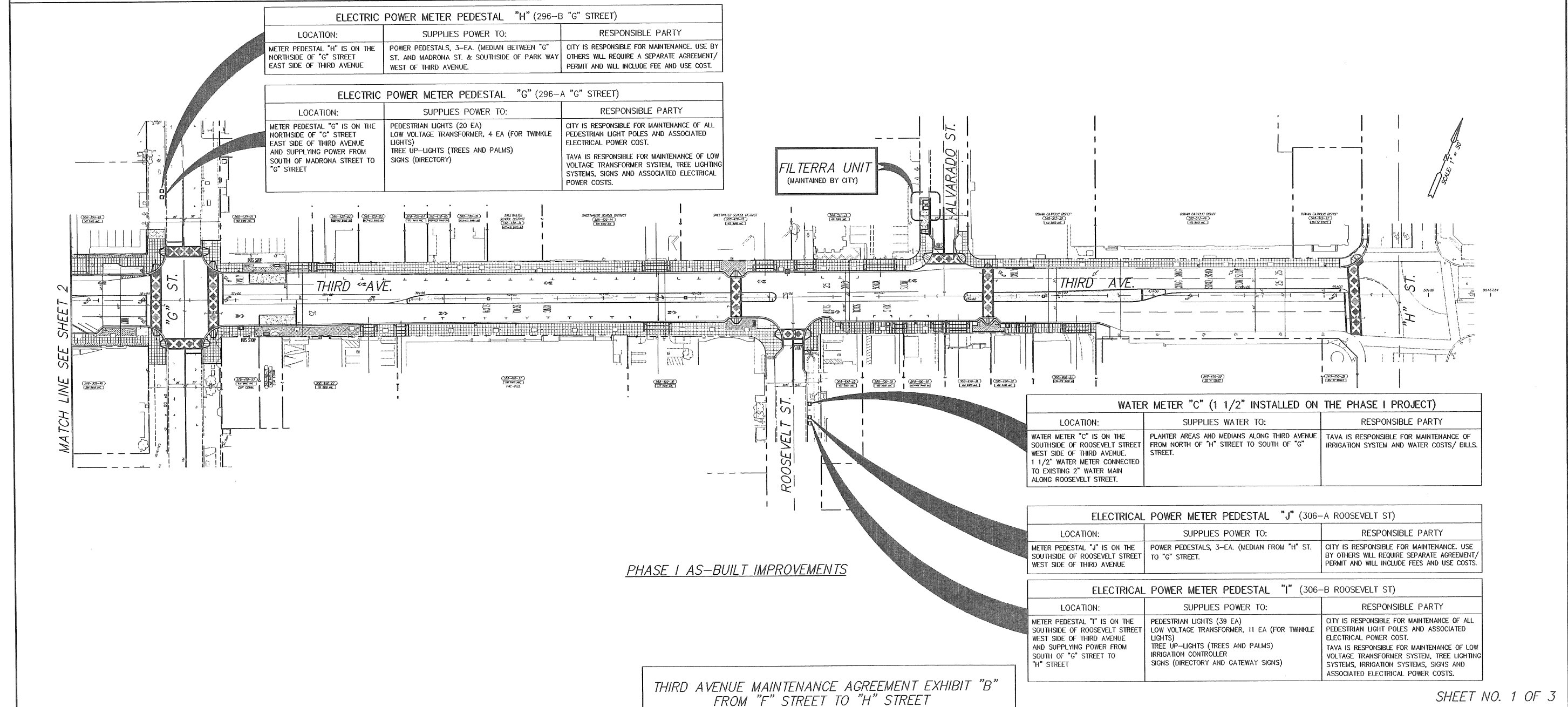


EXISTING IMPROVEMENTS PRIOR TO PHASE I PROJECT (STM-362)



ELECTRIC POWER METER PEDESTAL "H" (296-B "G" STREET)		
LOCATION:	SUPPLIES POWER TO:	RESPONSIBLE PARTY
METER PEDESTAL "H" IS ON THE NORTHSIDE OF "G" STREET EAST SIDE OF THIRD AVENUE	POWER PEDESTALS, 3-EA. (MEDIAN BETWEEN "G" ST. AND MADRONA ST. & SOUTHSIDE OF PARK WAY WEST OF THIRD AVENUE.	CITY IS RESPONSIBLE FOR MAINTENANCE. USE BY OTHERS WILL REQUIRE A SEPARATE AGREEMENT/ PERMIT AND WILL INCLUDE FEE AND USE COST.
ELECTRIC POWER METER PEDESTAL "G" (296-A "G" STREET)		
LOCATION:	SUPPLIES POWER TO:	RESPONSIBLE PARTY
METER PEDESTAL "G" IS ON THE NORTHSIDE OF "G" STREET EAST SIDE OF THIRD AVENUE AND SUPPLYING POWER FROM SOUTH OF MADRONA STREET TO "G" STREET	PEDESTRIAN LIGHTS (20 EA) LOW VOLTAGE TRANSFORMER, 4 EA (FOR TWINKLE LIGHTS) TREE UP-LIGHTS (TREES AND PALMS) SIGNS (DIRECTORY)	CITY IS RESPONSIBLE FOR MAINTENANCE OF ALL PEDESTRIAN LIGHT POLES AND ASSOCIATED ELECTRICAL POWER COST. TAVA IS RESPONSIBLE FOR MAINTENANCE OF LOW VOLTAGE TRANSFORMER SYSTEM, TREE LIGHTING SYSTEMS, SIGNS AND ASSOCIATED ELECTRICAL POWER COSTS.

FILTERRA UNIT
(MAINTAINED BY CITY)

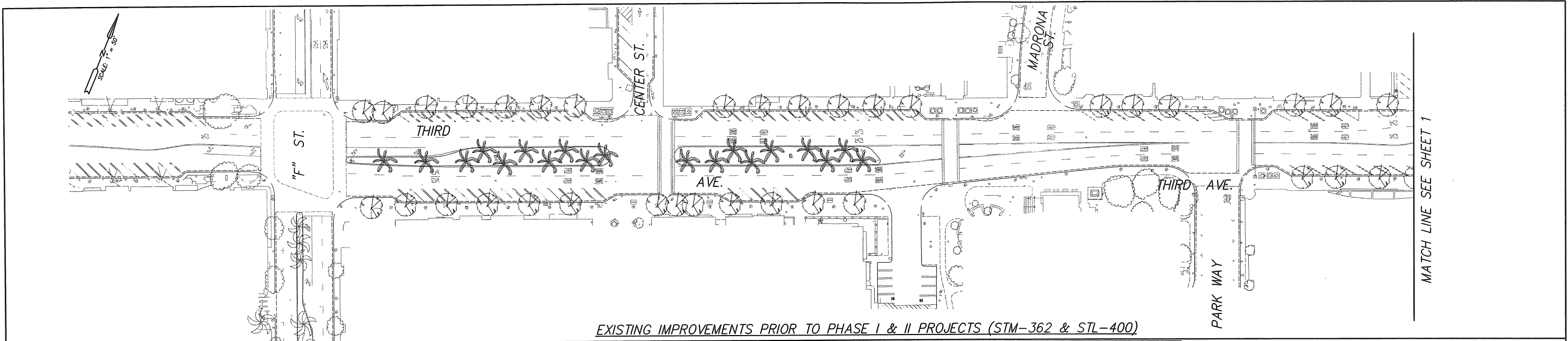
WATER METER "C" (1 1/2" INSTALLED ON THE PHASE I PROJECT)		
LOCATION:	SUPPLIES WATER TO:	RESPONSIBLE PARTY
WATER METER "C" IS ON THE SOUTHSIDE OF ROOSEVELT STREET WEST SIDE OF THIRD AVENUE. 1 1/2" WATER METER CONNECTED TO EXISTING 2" WATER MAIN ALONG ROOSEVELT STREET.	PLANTER AREAS AND MEDIANS ALONG THIRD AVENUE FROM NORTH OF "H" STREET TO SOUTH OF "G" STREET.	TAVA IS RESPONSIBLE FOR MAINTENANCE OF IRRIGATION SYSTEM AND WATER COSTS/ BILLS. STREET.

ELECTRICAL POWER METER PEDESTAL "J" (306-A ROOSEVELT ST)		
LOCATION:	SUPPLIES POWER TO:	RESPONSIBLE PARTY
METER PEDESTAL "J" IS ON THE SOUTHSIDE OF ROOSEVELT STREET WEST SIDE OF THIRD AVENUE	POWER PEDESTALS, 3-EA. (MEDIAN FROM "H" ST. TO "G" STREET.	CITY IS RESPONSIBLE FOR MAINTENANCE. USE BY OTHERS WILL REQUIRE SEPARATE AGREEMENT/ PERMIT AND WILL INCLUDE FEES AND USE COSTS.

ELECTRICAL POWER METER PEDESTAL "I" (306-B ROOSEVELT ST)		
LOCATION:	SUPPLIES POWER TO:	RESPONSIBLE PARTY
METER PEDESTAL "I" IS ON THE SOUTHSIDE OF ROOSEVELT STREET WEST SIDE OF THIRD AVENUE AND SUPPLYING POWER FROM SOUTH OF "G" STREET TO "H" STREET	PEDESTRIAN LIGHTS (39 EA) LOW VOLTAGE TRANSFORMER, 11 EA (FOR TWINKLE LIGHTS) TREE UP-LIGHTS (TREES AND PALMS) IRRIGATION CONTROLLER SIGNS (DIRECTORY AND GATEWAY SIGNS)	CITY IS RESPONSIBLE FOR MAINTENANCE OF ALL PEDESTRIAN LIGHT POLES AND ASSOCIATED ELECTRICAL POWER COST. TAVA IS RESPONSIBLE FOR MAINTENANCE OF LOW VOLTAGE TRANSFORMER SYSTEM, TREE LIGHTING SYSTEMS, IRRIGATION SYSTEMS, SIGNS AND ASSOCIATED ELECTRICAL POWER COSTS.

PHASE I AS-BUILT IMPROVEMENTS

THIRD AVENUE MAINTENANCE AGREEMENT EXHIBIT "B"
FROM "F" STREET TO "H" STREET



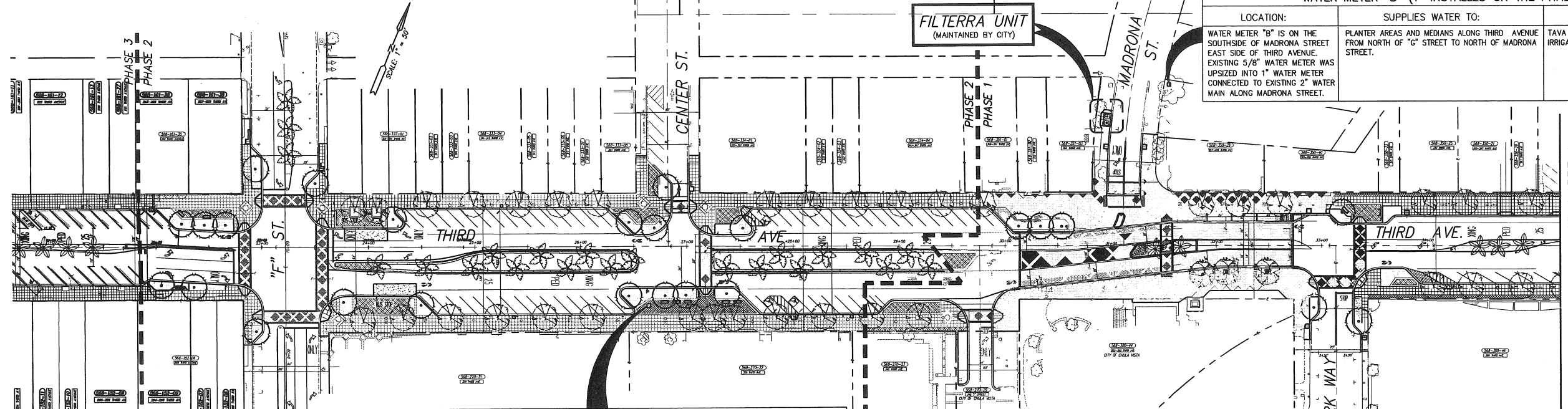
EXISTING IMPROVEMENTS PRIOR TO PHASE I & II PROJECTS (STM-362 & STL-400)

ELECTRIC POWER METER PEDESTAL "D" (284-C CENTER STREET)		
LOCATION:	SUPPLIES POWER TO:	RESPONSIBLE PARTY
METER PEDESTAL "D" IS ON THE SOUTHSIDE OF CENTER STREET EAST SIDE OF THIRD AVENUE AND SUPPLYING POWER TO POWER PEDESTALS BETWEEN CENTER STREET & "F" STREET.	POWER PEDESTALS PP1 & PP2 (ALONG THE SIDEWALK BETWEEN CENTER STREET & "F" STREET). POWER PEDESTAL PP2 SUPPLIES POWER TO IRRIGATION CONTROLLER(WEST SIDE OF THIRD AV. JUST NORTH OF CENTER STREET).	CITY IS RESPONSIBLE FOR MAINTENANCE. USE BY OTHERS WILL REQUIRE A SEPARATE AGREEMENT/ PERMIT AND WILL INCLUDE FEES AND USE COSTS. EXCEPT TAVA IS RESPONSIBLE FOR THE POWER COST ASSOCIATED WITH THE IRRIGATION SYSTEM.

ELECTRIC POWER METER PEDESTAL "E" (284-A CENTER STREET)		
LOCATION:	SUPPLIES POWER TO:	RESPONSIBLE PARTY
METER PEDESTAL "E" IS ON THE SOUTHSIDE OF CENTER STREET EAST SIDE OF THIRD AVENUE AND SUPPLYING POWER FROM NORTH OF MADRONA STREET TO "F" STREET	PEDESTRIAN LIGHTS (32 EA) LOW VOLTAGE TRANSFORMER, 7 EA (FOR TWINKLE LIGHTS) TREE UP-LIGHTS (TREES AND PALMS)	CITY IS RESPONSIBLE FOR MAINTENANCE OF ALL PEDESTRIAN LIGHT POLES AND ASSOCIATED ELECTRICAL POWER COST. TAVA IS RESPONSIBLE FOR MAINTENANCE OF LOW VOLTAGE TRANSFORMER SYSTEM, TREE LIGHTING SYSTEMS AND ASSOCIATED ELECTRICAL POWER COSTS.

ELECTRIC POWER METER PEDESTAL "F" (284-B CENTER STREET)		
LOCATION:	SUPPLIES POWER TO:	RESPONSIBLE PARTY
METER PEDESTAL "F" IS ON THE SOUTHSIDE OF CENTER STREET EAST SIDE OF THIRD AVENUE	POWER PEDESTALS PP3 & PP4 (ALONG THE SIDEWALK BETWEEN MADRONA STREET & CENTER STREET).	CITY IS RESPONSIBLE FOR MAINTENANCE. USE BY OTHERS WILL REQUIRE A SEPARATE AGREEMENT/ PERMIT AND WILL INCLUDE FEES AND USE COSTS.

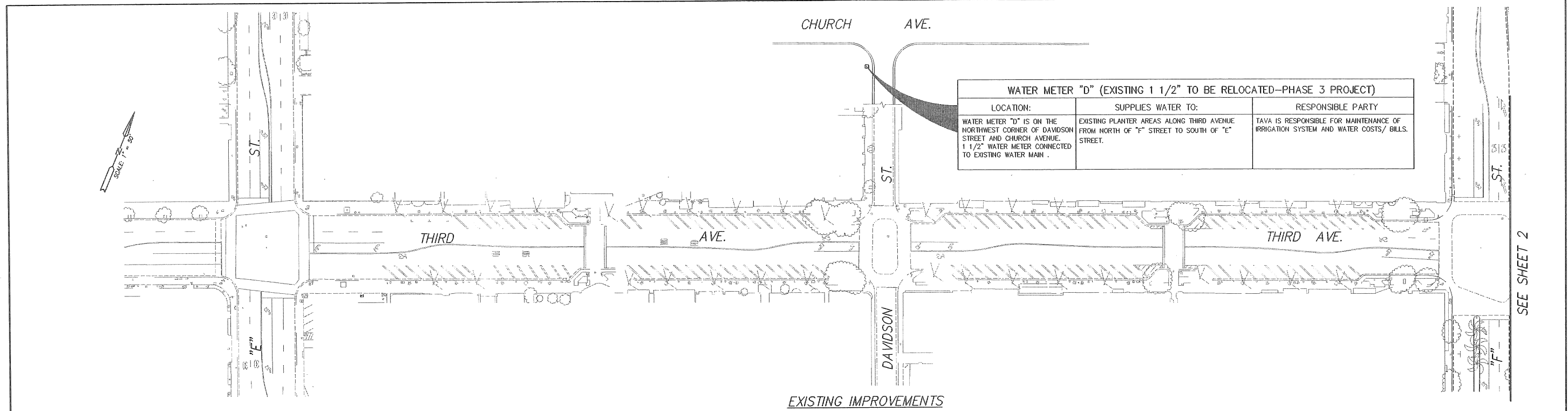
WATER METER "B" (1" INSTALLED ON THE PHASE I PROJECT)		
LOCATION:	SUPPLIES WATER TO:	RESPONSIBLE PARTY
WATER METER "B" IS ON THE SOUTHSIDE OF MADRONA STREET EAST SIDE OF THIRD AVENUE. EXISTING 5/8" WATER METER WAS UPSIZED INTO 1" WATER METER CONNECTED TO EXISTING 2" WATER MAIN ALONG MADRONA STREET.	PLANTER AREAS AND MEDIANS ALONG THIRD AVENUE FROM NORTH OF "G" STREET TO NORTH OF MADRONA STREET.	TAVA IS RESPONSIBLE FOR MAINTENANCE OF IRRIGATION SYSTEMS AND WATER COSTS/ BILLS.



WATER METER "A" (NEW 2" INSTALLED ON THE PHASE 2 PROJECT)		
LOCATION:	SUPPLIES WATER TO:	RESPONSIBLE PARTY
WATER METER "A" IS ON THE BULB OUT SIDEWALK AREA ON THE WEST SIDE OF THIRD AVENUE JUST NORTH OF CENTER STREET. 2" WATER METER CONNECTED TO EXISTING WATER MAIN.	PLANTER AREAS, MEDIANS AND TREE WELLS WITH NEW TREES ALONG THIRD AVENUE FROM NORTH OF FUDDRUCKERS DRIVEWAY TO NORTH OF "F" STREET.	TAVA IS RESPONSIBLE FOR MAINTENANCE OF IRRIGATION SYSTEMS AND WATER COSTS/ BILLS.

PHASE I & II AS-BUILT IMPROVEMENTS

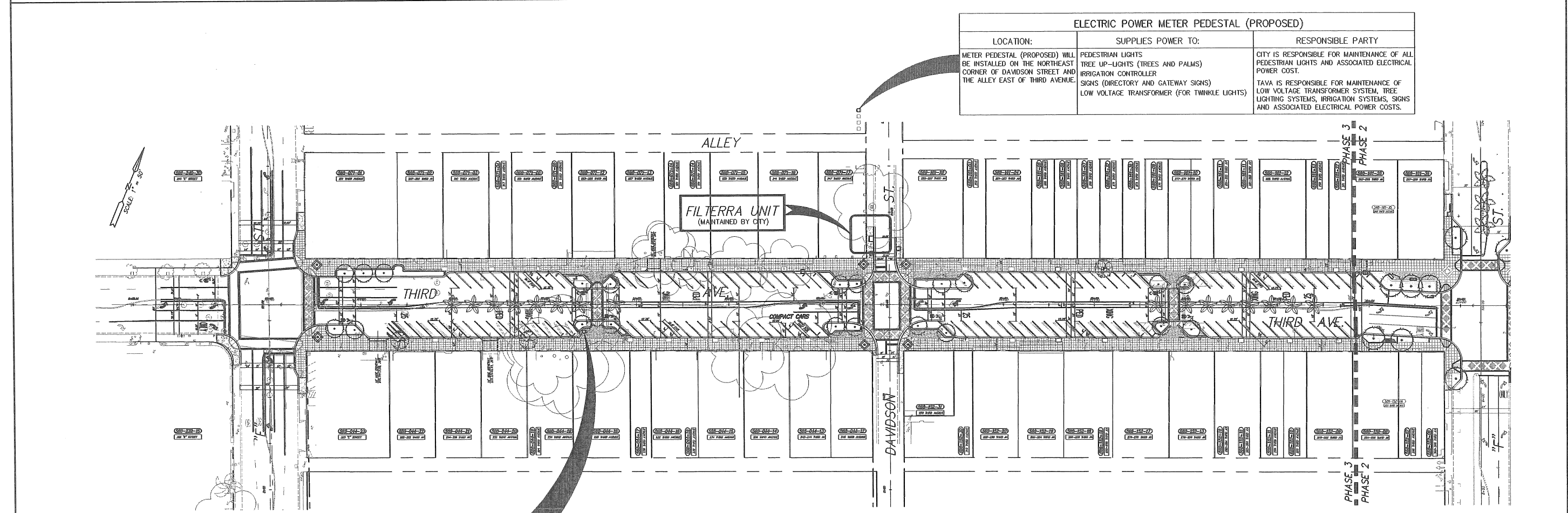
THIRD AVENUE MAINTENANCE AGREEMENT EXHIBIT "B" FROM "F" STREET TO "H" STREET



WATER METER "D" (EXISTING 1 1/2" TO BE RELOCATED--PHASE 3 PROJECT)		
LOCATION:	SUPPLIES WATER TO:	RESPONSIBLE PARTY
WATER METER "D" IS ON THE NORTHWEST CORNER OF DAVIDSON STREET AND CHURCH AVENUE. 1 1/2" WATER METER CONNECTED TO EXISTING WATER MAIN .	EXISTING PLANTER AREAS ALONG THIRD AVENUE FROM NORTH OF "F" STREET TO SOUTH OF "E" STREET.	TAVA IS RESPONSIBLE FOR MAINTENANCE OF IRRIGATION SYSTEM AND WATER COSTS/ BILLS.

EXISTING IMPROVEMENTS

SEE SHEET 2



ELECTRIC POWER METER PEDESTAL (PROPOSED)		
LOCATION:	SUPPLIES POWER TO:	RESPONSIBLE PARTY
METER PEDESTAL (PROPOSED) WILL BE INSTALLED ON THE NORTHEAST CORNER OF DAVIDSON STREET AND THE ALLEY EAST OF THIRD AVENUE.	PEDESTRIAN LIGHTS TREE UP-LIGHTS (TREES AND PALMS) IRRIGATION CONTROLLER SIGNS (DIRECTORY AND GATEWAY SIGNS) LOW VOLTAGE TRANSFORMER (FOR TWINKLE LIGHTS)	CITY IS RESPONSIBLE FOR MAINTENANCE OF ALL PEDESTRIAN LIGHTS AND ASSOCIATED ELECTRICAL POWER COST. TAVA IS RESPONSIBLE FOR MAINTENANCE OF LOW VOLTAGE TRANSFORMER SYSTEM, TREE LIGHTING SYSTEMS, IRRIGATION SYSTEMS, SIGNS AND ASSOCIATED ELECTRICAL POWER COSTS.

FUTURE IMPROVEMENTS PHASE III

WATER METER "D" (EXISTING 1 1/2" PROPOSED LOCATION--PHASE 3 PROJECT)		
LOCATION:	WILL SUPPLY WATER TO:	RESPONSIBLE PARTY
WATER METER "D" PROPOSED LOCATION WILL BE ON THE BULB OUT SIDEWALK AREA NORTH OF THE CROSSWALK ON THE WEST SIDE OF THIRD AVENUE.	PLANTER AREAS, MEDIANS AND TREE WELLS WITH NEW TREES ALONG THIRD AVENUE, BETWEEN "F" STREET AND "E" STREET.	TAVA IS RESPONSIBLE FOR MAINTENANCE OF IRRIGATION SYSTEM AND WATER COSTS/ BILLS.

THIRD AVENUE MAINTENANCE AGREEMENT EXHIBIT "B"
FROM "E" STREET TO "F" STREET