



# UTILITY UNDERGROUNDING PROGRAM UPDATE

ENGINEERING & CAPITAL PROJECTS  
NOVEMBER 19, 2019

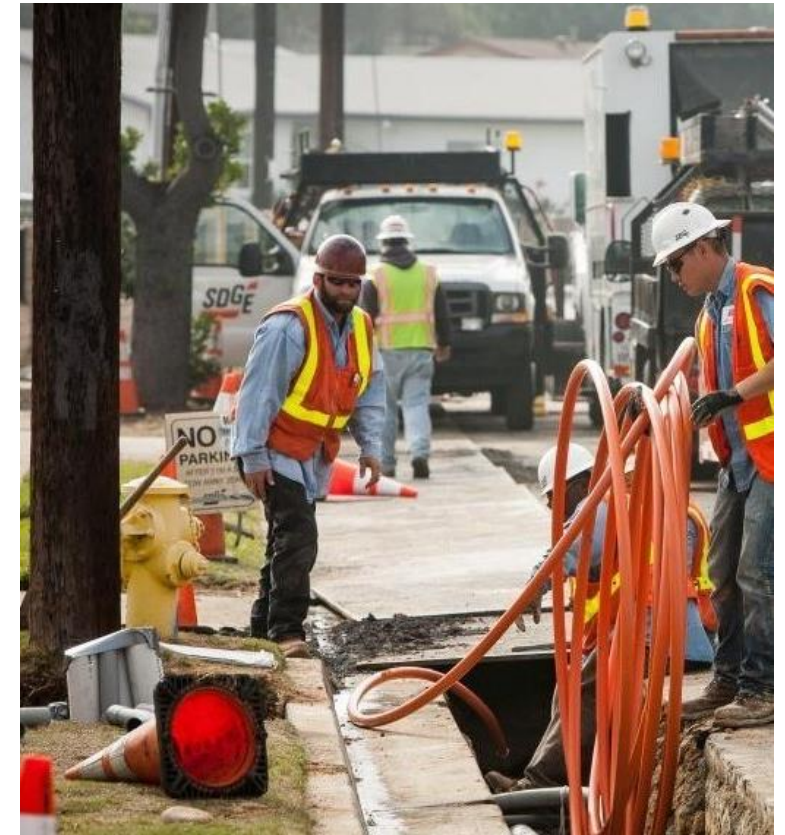


|            |                        |                                |                        |                      |                      |                                |            |
|------------|------------------------|--------------------------------|------------------------|----------------------|----------------------|--------------------------------|------------|
| 1          | 2                      | 3                              | 4                      | 5                    | 6                    | 7                              | 8          |
| Background | Undergrounding Rule 20 | Rating System for 20A Projects | Completed 20A Projects | Current 20A Projects | 20A Eligibility List | Utility Undergrounding Process | Questions? |

# UTILITY UNDERGROUNDING PROGRAM UPDATE

# BACKGROUND

- Public Utilities Commission (PUC) adopts Tariff Rule 20 (1967)
- Ordinance No. 1128 – Addition of Chapter 34, entitled “Utilities” (1968)
- Ordinance No. 1460 – Amendment of Chapter 34 establishing “Regulations and Procedures for the Removal and Undergrounding Facilities in Underground Utility Districts...” (1973)
- Under PUC Rule 20A
  - SDG&E Franchise allots \$2 million annually for Chula Vista 20A
  - Current account balance is approx. \$6.1 million
    - Design underway for F Street Promenade – Phase I (Bay Blvd to Broadway)  
Estimated cost of \$2.9 to \$3.2 million
  - Municipalities may program and advance up to 5 times the annual allocation



# UNDERGROUNDING RULE 20

## RULE 20A

- Arterial and Collector Roadways
- ~100% **Utility Contribution**

## RULE 20B

- Residential Roadways
- 80% **Customer Contribution**

## RULE 20C

- Small Scale Projects
- 100% **Customer Contribution**

## RULE 20D

- SDG&E Fire Threat Zones
- ~80% **Utility Contribution**

| Contribution Thresholds Per Rule | Ratepayer Contribution Through Utility Rates | Customers Contribution  | Criteria  |
|----------------------------------|--|---|---|
| 20A                              | 100%   | Max 20%: cost from street to meter<br>Min: zero if use mainline funds | Public Interest - Remove closely-packed lines, or be on a high traffic way, or be in a scenic area                            |
| 20B                              | 20%  | 80% <sup>1</sup>  | Don't meet Rule 20A criteria, but still involve undergrounding both sides of the street for at least 600 feet.                |
| 20C                              | De minimus                                   | 100% <sup>2</sup>   | Typically small projects, where a business or individual pays everything  |
| 20D <sup>3</sup>                 | ~80%   | Max 20%: cost from street to meter<br>Min: zero if use mainline funds | Facilities within SDG&E Fire Threat Zone and undergrounding is a preferred method to reduce fire risk and enhance reliability |

<sup>1</sup> Rule 20B customers pay a nonrefundable sum equal to the excess, if any, of the estimated costs, of completing the underground system and building a new equivalent overhead system.

<sup>2</sup> Rule 20C customers pay a nonrefundable sum equal to the estimated cost of the underground facilities less the estimated net salvage value and depreciation of the replaced overhead facilities.

<sup>3</sup> Rule 20D is a new program approved by D14-01-002 in January 2014 only for San Diego Gas & Electric Company.

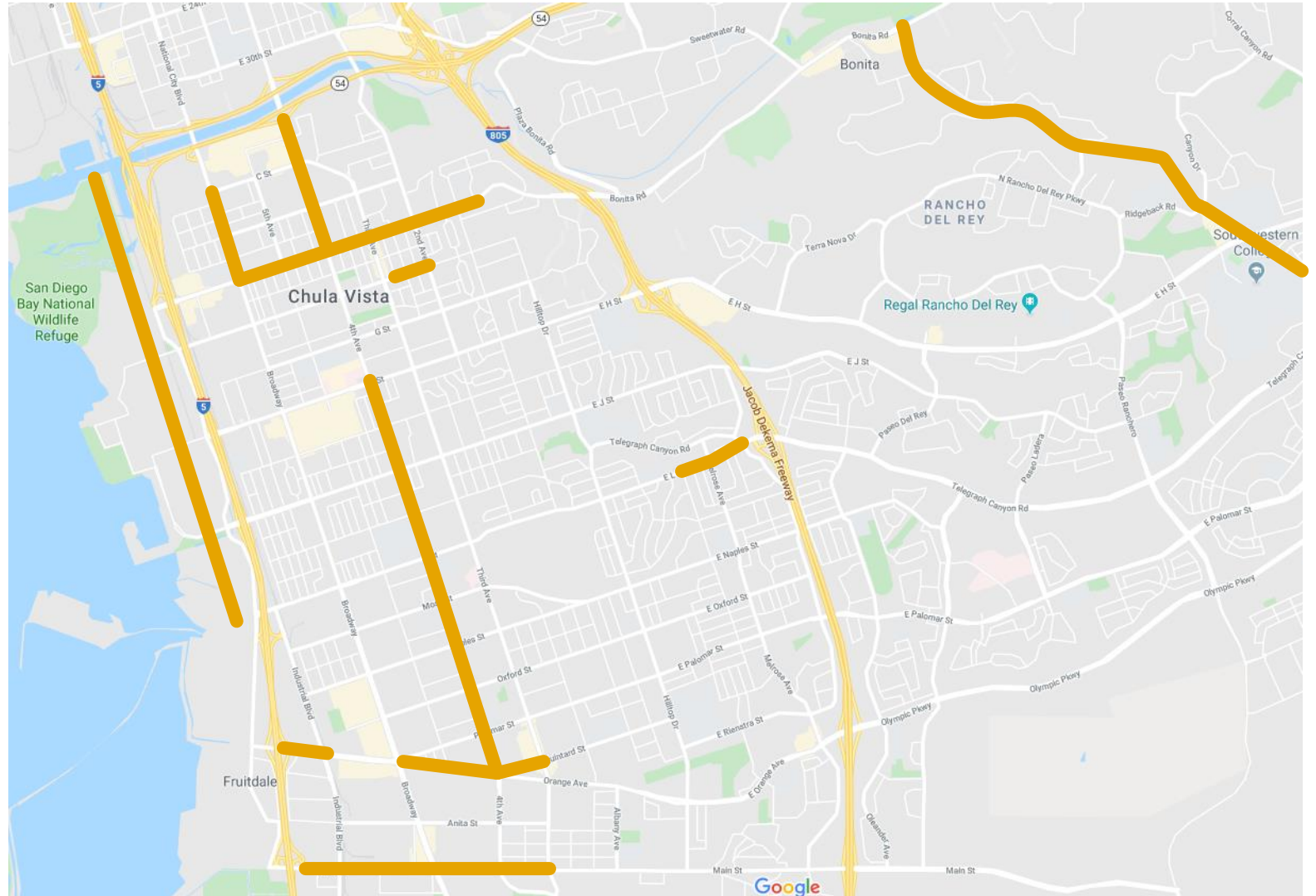
# RATING SYSTEM FOR 20A PROJECTS

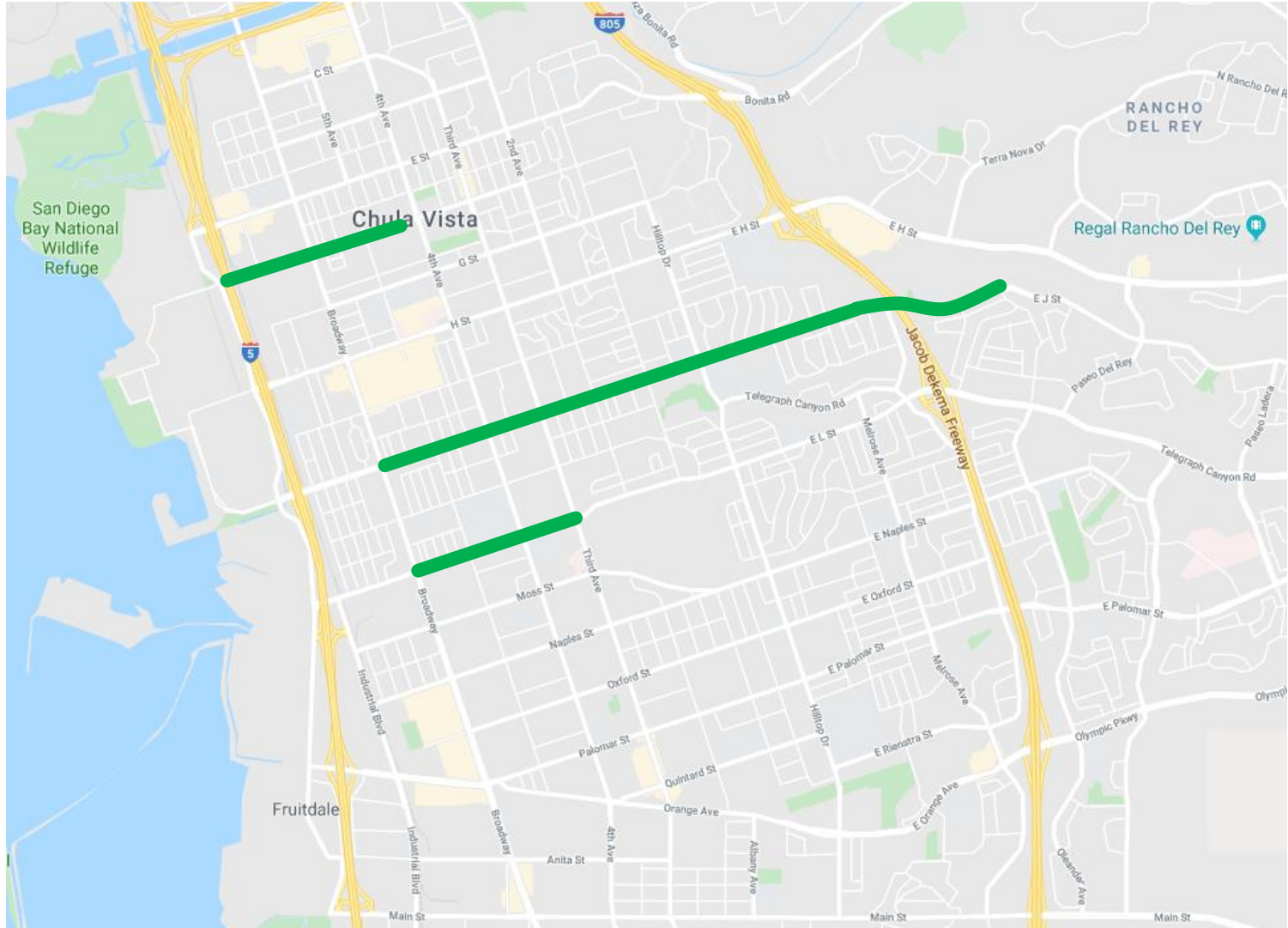
| <u>RATING CATEGORY</u>                                      | <u>Maximum Value</u> |
|---|----------------------|
| A. Average Daily Traffic (ADT) and Classification           | 25 points            |
| B. Location   | 10 points            |
| 1. Adjacent to Civic, Scenic, Recreational or Historic Area |                      |
| Or  |                      |
| 2. Entrance to City or near Freeway Interchange             |                      |
| C. Relationship to Approved/Completed UUD Districts         | 10 points            |
| D. Concentration of Overhead Lines                          | 15 points            |
| E. Associated Public Construction                           | 20 points            |
| F. R/W and Road Improvement Status                          | 20 points            |
|   | _____                |
|   | TOTAL 100 points     |

Per Council Resolution No: 2011-248

# COMPLETED 20A PROJECTS

- **Bayfront Phase I** (Sweetwater River to L St)
- **Broadway** (C St to E St)
- **E Street** (Broadway to Toyon Ln)
- **Fourth Avenue** (SR54 to E St)
- **Fourth Avenue** (H St to L St)
- **Fourth Avenue** (L St to Orange Av)
- **F Street** (Church Av to Second Av)
- **East L Street** (Monserate Av to Nacion Av)
- **Main Street** (Interstate 5 to Third Av)
- **Orange Avenue** (Fourth Av to Palomar St)
- **Otay Lakes Road Phase I** (Bonita Rd to Camino del Cerro Grande)
- **Otay Lakes Road Phase II** (Camino del Cerro Grande to Ridgeback Rd)
- **Otay Lakes Rd** (Ridgeback Rd to Apache Dr)
- **Palomar Street** (Interstate 5 to Industrial Bl)
- **Quintard Street** (Third Av to Orange Av)





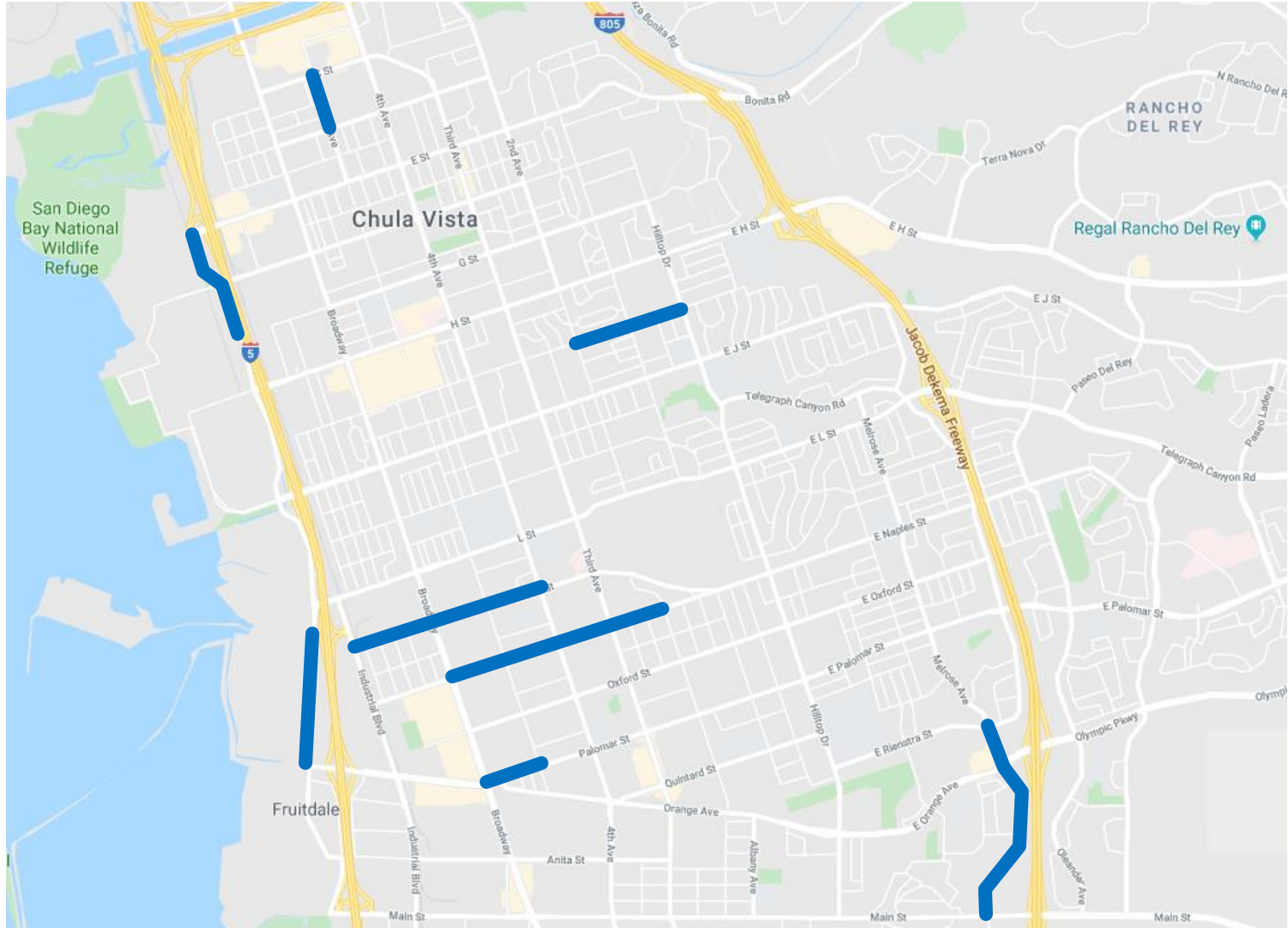
## CURRENT 20A PROJECTS

### IN DESIGN

- **F Street** (Bay Blvd to Broadway)

### DISTRICTS ESTABLISHED

- **F Street** (Broadway to Fourth Av)
- **L Street** (Broadway to Third Av)
- **J Street** (Broadway to Hilltop Dr)
- **J Street** (Hilltop Dr to w/o Lori Ln)



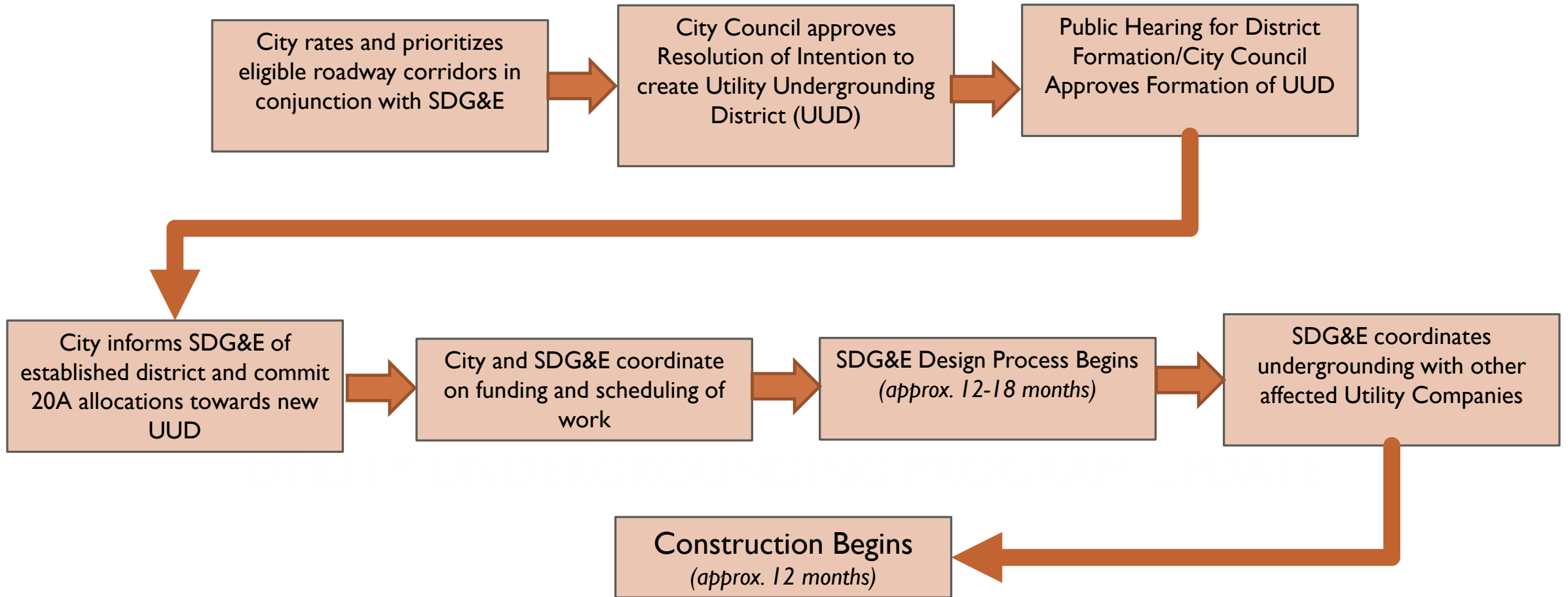
## 20A ELIGIBILITY LIST (HIGHEST RATINGS)

- **Bay Boulevard** (E St to F St)
- **Bay Boulevard** (F St to G St)
- **Bay Boulevard** (I-5 SB Ramps to Palomar St)
- **Fifth Avenue** (C St to D St)
- **I Street** (Second Av to Hilltop Dr)
- **Melrose Avenue** (E Rienstra St to Main St)
- **Moss Street** (Industrial Bl to Fourth Av)
- **Naples Street** (Broadway to Second Av)
- **Palomar Street** (Broadway to Fifth Av)

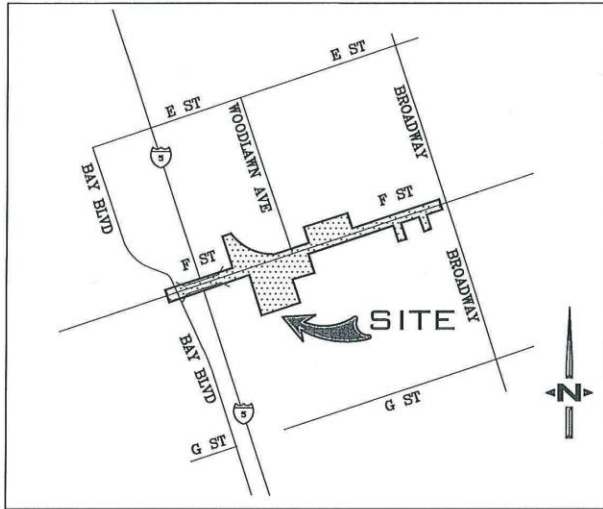
\* All rated at 50 points and higher.  
 \*\* 44 total segments rated (UUD not established).  
 \*\*\*Does not include alleys or residential streets.



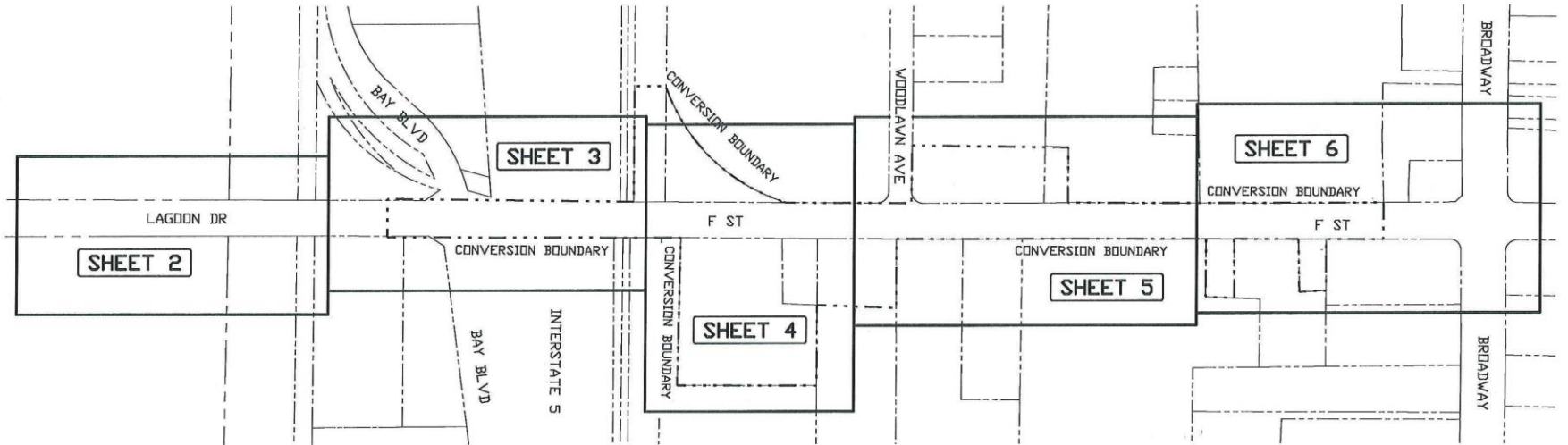
# Utility Undergrounding Process



# F STREET 20A CONVERSION - PHASE 1 TRENCH & CONDUIT JOB



VICINITY MAP  
NO SCALE 1309-J7,J6



# QUESTIONS?