

HEPATITIS A OUTBREAK SAN DIEGO COUNTY

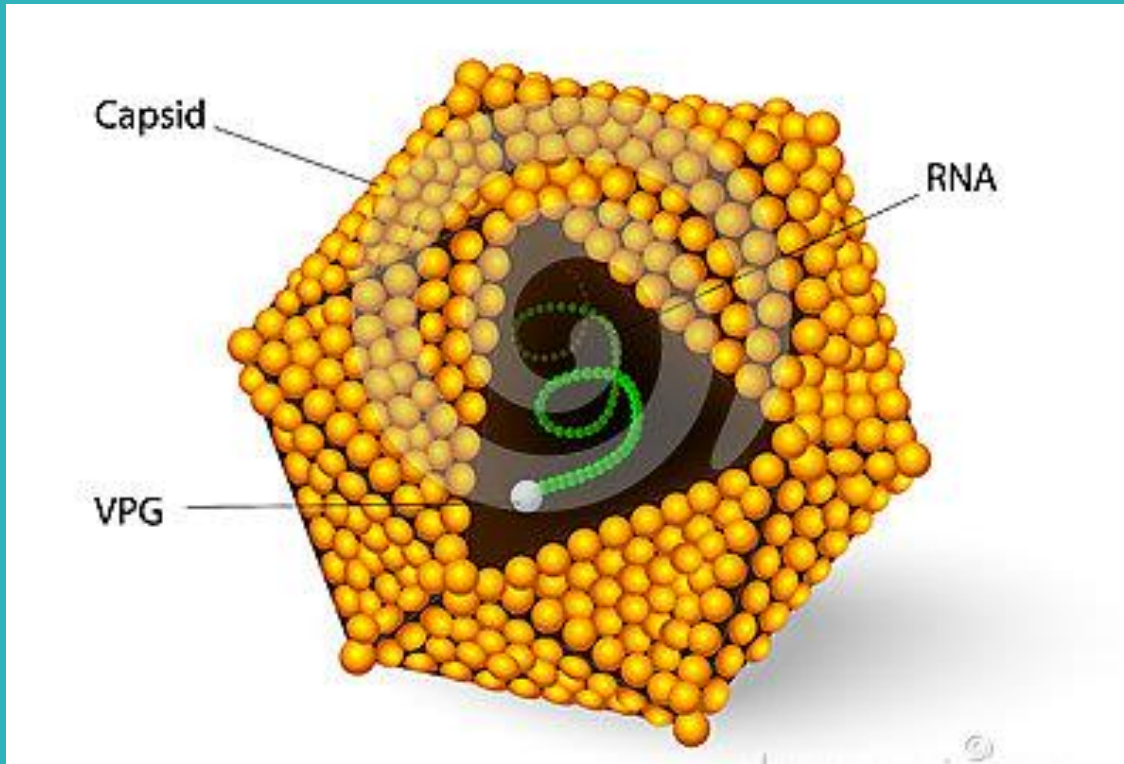
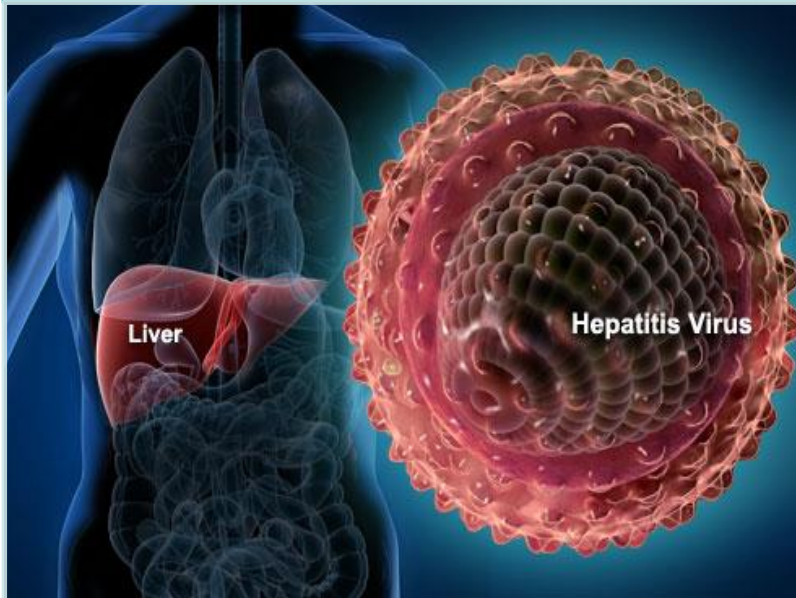


Image Credit: CDC

Chula Vista City Council Meeting
October 10, 2017 * 5PM



Caused by a virus



Hepatitis A can easily spread from person-to-person

Can cause liver disease lasting a few weeks to a serious illness lasting several months

Can cause death in some cases



The virus can live outside the body for months, depending on the environmental conditions

Average incubation period for Hepatitis A infection is 28 days (range: 15–50 days)

An individual can be contagious up to two weeks before developing symptoms or 1 weeks after onset of symptoms

Adequate chlorination of water kills the virus that enters the water supply

Vaccination with the full, two-dose series is the best way to prevent infection

HEPATITIS A - SYMPTOMS



LIVE WELL
SAN DIEGO



Fever



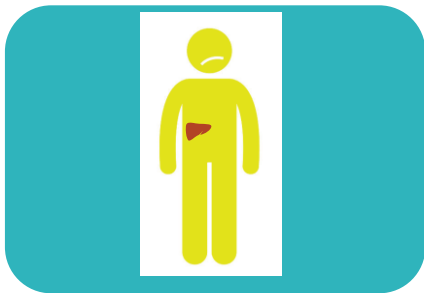
Fatigue



Nausea



Loss of Appetite



Jaundice



Stomach Pain



Vomiting



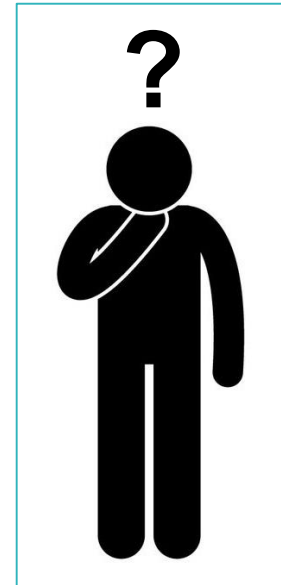
Dark Urine, Pale
Stools and
Diarrhea

HEPATITIS A – AT RISK

- Homeless*
- Intravenous and non-intravenous illicit drug users#*
- Travelers to countries with high or intermediate endemicity of HAV infection
- Men who have sex with men
- People with chronic liver disease
- Persons with clotting factor disorders
- Persons working with nonhuman primates or laboratory research



LIVE WELL
SAN DIEGO



* = Local Recommendation
= CDC Recommendation

VACCINATIONS ARE FURTHER RECOMMENDED FOR:

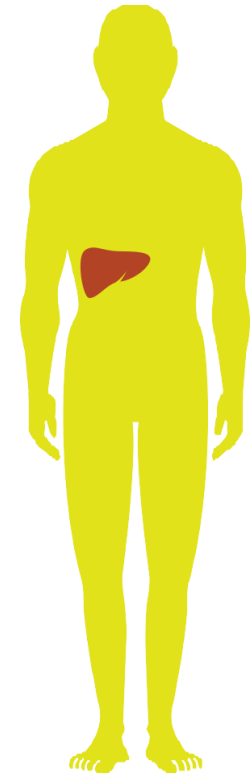


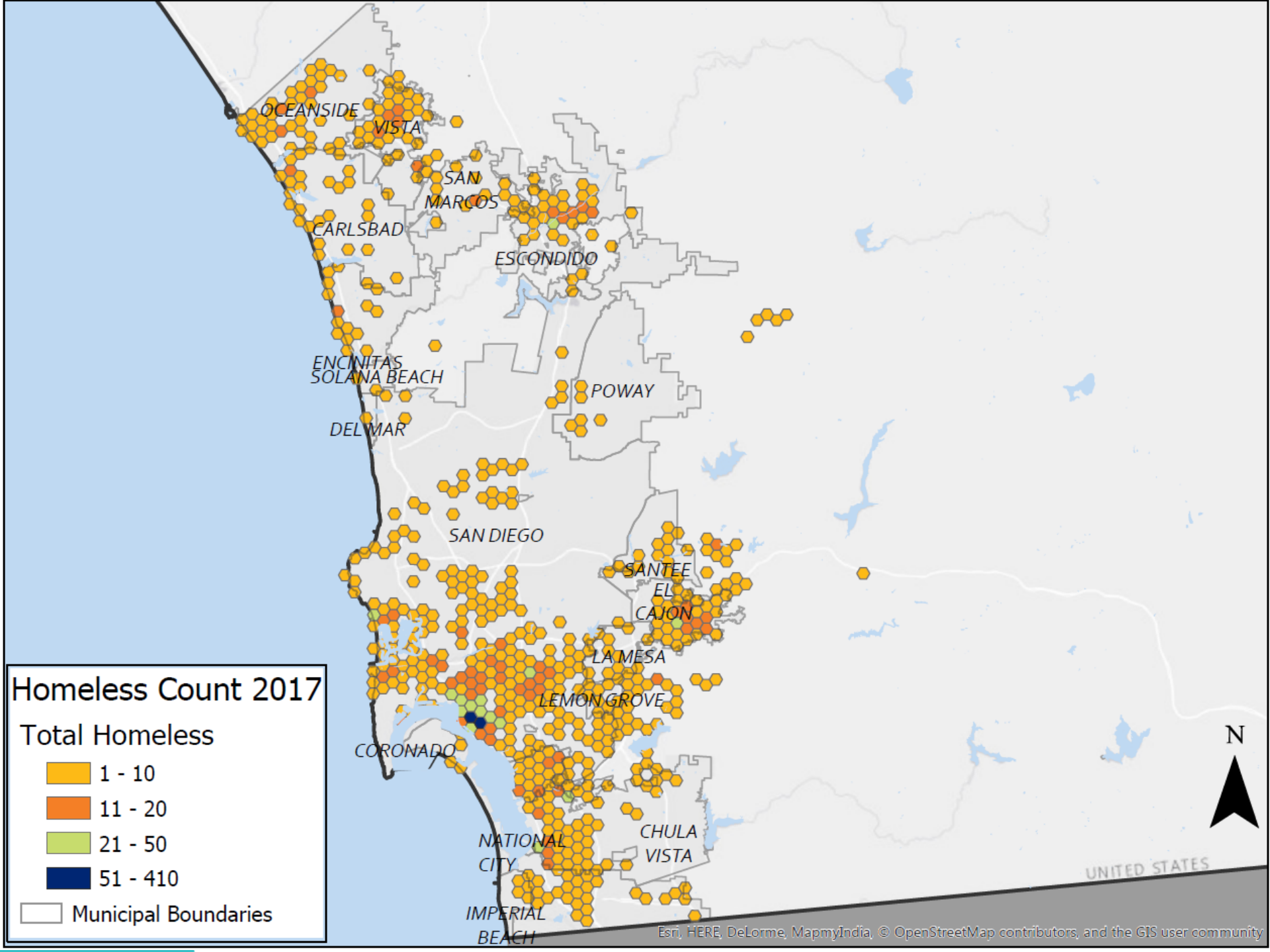
- Fire and Emergency Medical Services Agencies
- Food Handlers
- Healthcare Personnel
- Law Enforcement Agencies
- Local Businesses
- Service Providers
 - Homeless Providers
 - Substance Use Treatment Providers
- Notifications have been sent out in May, July, and August.
- Letter specifically to Food Facilities Operator on 9/15/17.
- Repeat letters going out next week of 9/25.

HEPATITIS A, SAN DIEGO



- **490 confirmed/probable outbreak cases**
 - Onset dates from 11/22/16 through 9/26/17
 - 342 (70%) hospitalizations, 18 (3.7%) deaths
 - 336 (69%) male (8 MSM), 154 (31%) female
 - Age range 5-87 (median 43)
- **Suspected exposure type**
 - 162 (33%) homeless and illicit drug use
 - 80 (16%) homeless only
 - 61 (12%) illicit drug use only
 - 128 (26%) neither
 - 59 (12%) unknown



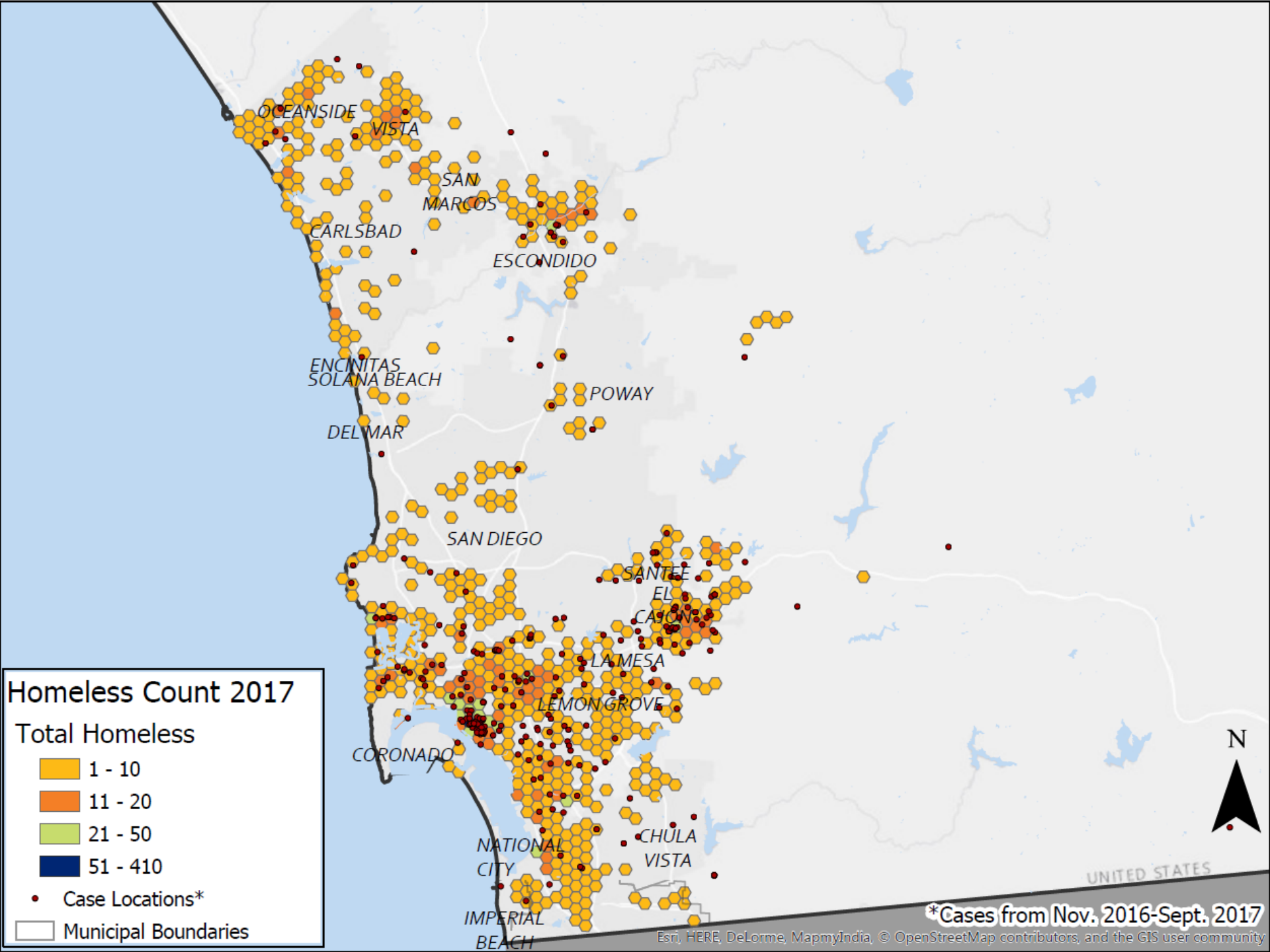


Homeless Count 2017

Total Homeless

- 1 - 10
- 11 - 20
- 21 - 50
- 51 - 410

Municipal Boundaries



Homeless Count 2017

Total Homeless

- 1 - 10
- 11 - 20
- 21 - 50
- 51 - 410

- Case Locations*
- Municipal Boundaries

*Cases from Nov. 2016-Sept. 2017

VACCINATION EFFORTS



LIVE WELL
SAN DIEGO

- **Vaccines are administered to at-risk by:**
 - **County staff at:**
 - County clinics (Public Health Centers, TB/STD clinics)
 - vaccination events, and
 - jails individuals; as well as
 - Field events that include mass vaccination clinics, “foot teams,” and mobile vans.
 - **Community partners at**
 - Health care systems (Hospital EDs)
 - Federally-qualified Health Centers
 - Pharmacies
 - **Industry partners**





- Over **68,445** total vaccines administered countywide, as of 10/07:
 - **21,588** given by County staff through field events (e.g., foot teams, mobile vans, and mass vaccination clinics), jails, Tuberculosis Clinic, the County Psychiatric Hospital, and Public Health Centers;
 - **36,142** provided by health care systems, federally qualified health centers, and pharmacists;
 - **751** vaccinations provided as post exposure prophylaxis; and
 - **10,812** vaccinations provided to food handlers and at-risk professionals.
 - Of the total vaccine administered, **53,869 (79%)** are the population at-risk
- Implemented comprehensive strategies such as offering vaccinations to all jail inmates and at Emergency Departments, substance use disorder treatment programs, homeless service providers, and partnering with Homeless Outreach Teams.



Foot Team Vaccination Efforts

SANITIZE (HYGIENE)



LIVE WELL
SAN DIEGO

- Department of Environmental Health (DEH)
 - Disinfection guidance for indoor areas
 - Food inspectors provided guidance information to operators during more than 8,265 inspections
- Public Health
 - 6,432 hygiene kits distributed as of 10/7
 - 99 handwashing stations placed as of 10/7



HAND WASHING STATIONS & HYGIENE KITS



**LIVE WELL
SAN DIEGO**



**Hygiene Kits: 6,432 as of 10/07/17
Contain water, non-alcohol hand sanitizer, cleaning wipes, clinic location information, plastic bags, and information card.**



**Hand Sanitizer Stations:
99 as of 10/07/17**



City contractor cleaning a street in downtown San Diego on 9/11 (Photo: San Diego Union Tribune)

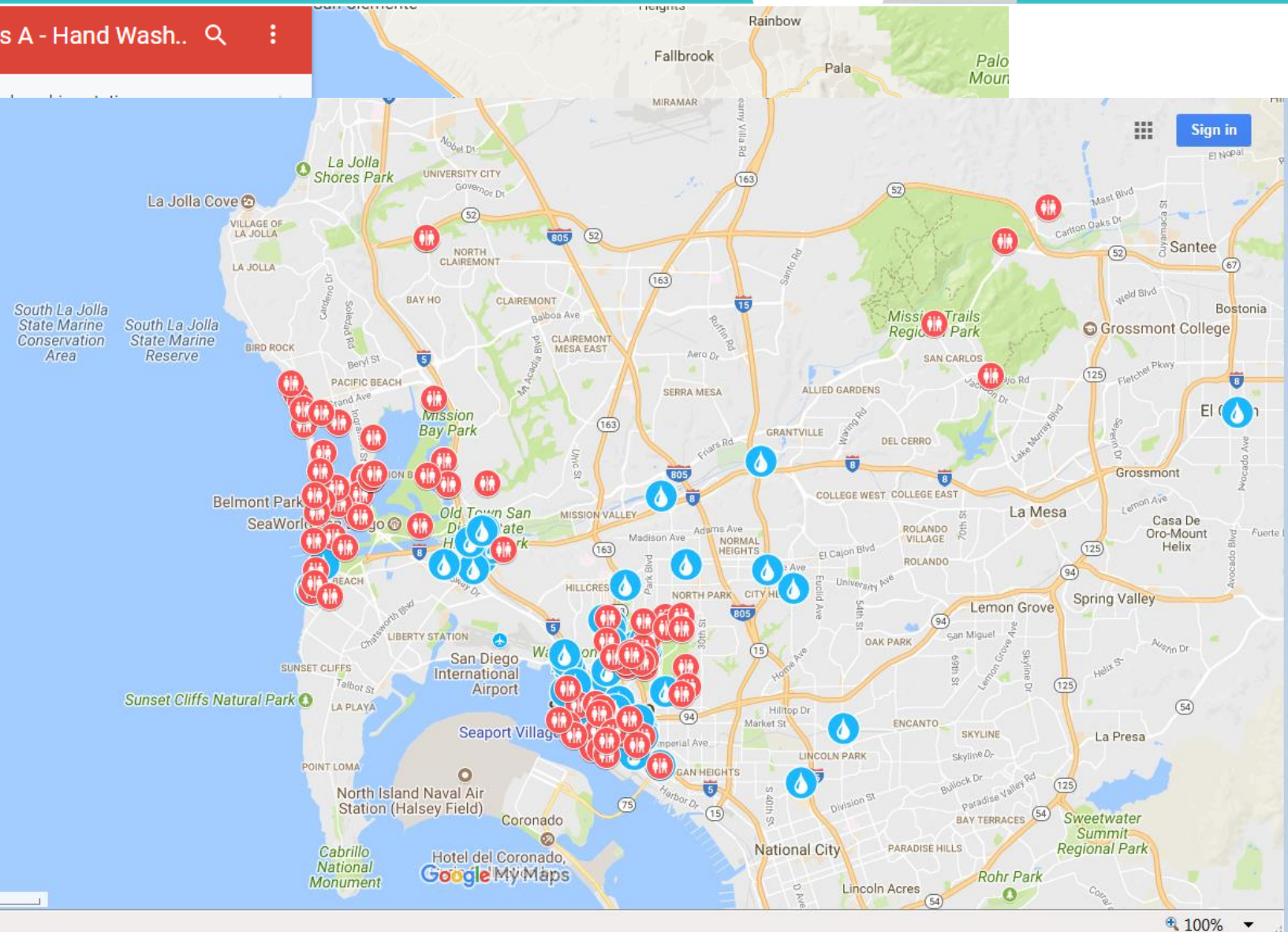
MAP OF HANDWASHING STATIONS AND PUBLIC BATHROOMS ON 211 PAGE



Hepatitis A - Hand Wash...

A list of
245 vie
SHARE

- Hand Wash...
- All items
- Public
- All items
- Public
- All items
- Public
- All items
- Public
- All items
- Public
- All items





- 11 news stories, 2 press conferences
- 9 CA Health Alert Network (CAHAN) notifications about the outbreak
- Conducted meetings with city leadership of local jurisdictions
- Convened health care provider meeting 9/19, HASDIC 9/20 & 10/5
- Provided 118 presentations, as of 10/7
- Distributed flyers, posters, FAQs, and more: available on [webpage](#)
- Public ad campaign began in early August; posters placed in trolleys and bus stations and made available to partners. Modified on 9/1/17.
- Established **2-1-1** as public information source.



STRATEGIC APPROACHES – CITY REQUESTS



VACCINATION



Support from law enforcement to have PH nurses to accompany on homeless outreach teams.

Vaccinate employees who have contact with at-risk populations.

SANITATION



Support indoor disinfection of bathrooms in municipality and business facilities.

Assist with identification of locations to place handwashing stations.

Increase access to public bathrooms & ensure proper sanitation.
Consider other options.

EDUCATION



Dissemination of letters to stakeholders.

Distribution to educational materials.

Request presentation to educate employees about Hepatitis A.

Provide connections to specific stakeholders in municipality.



WEEKLY TEMPLATES

- Can submit information via WebEOC
- **Template in briefing notebook**
- Submit by Friday, 12N weekly, as indicated

WEEKLY UPDATES

- Hepatitis A outbreak weekly update will be posted on WebEOC and the County Hepatitis A webpage



Public Health Services Administration
Health and Human Services Agency
County of San Diego

Wilma J. Wooten, MD, MPH
3851 Rosecrans Street (MS-P578)
San Diego, CA 92110
wilma.wooten@sdcounty.ca.gov

General information: 2-1-1 San Diego

Presentations: Email

kimberly.pettiford@sdcounty.ca.gov