



BAYSHORE BIKEWAY

Chula Vista City Council

February 27, 2018





BAYSHORE BIKEWAY PLAN UPDATE



Adopted by SANDAG in 2006



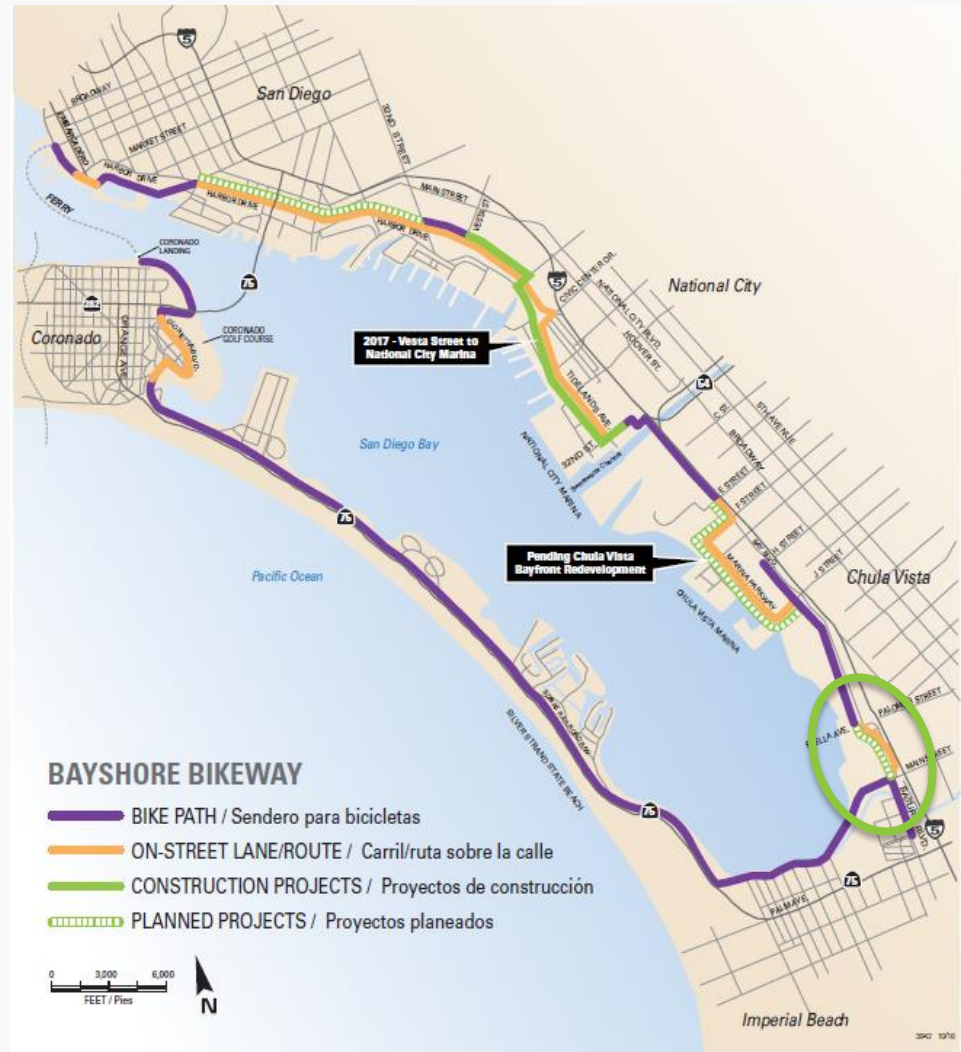
REGIONAL BIKE PLAN

EARLY ACTION PROGRAM





SEGMENT 8B – PALOMAR TO MAIN STREET





SEGMENT 8B

- 0.7 mile length
- \$3.4 million total budget
- 30% design complete
- CEQA clearance

Existing route	
Planned alignment	





CHULA VISTA BAYFRONT REDEVELOPMENT





SEGMENTS 4 AND 5

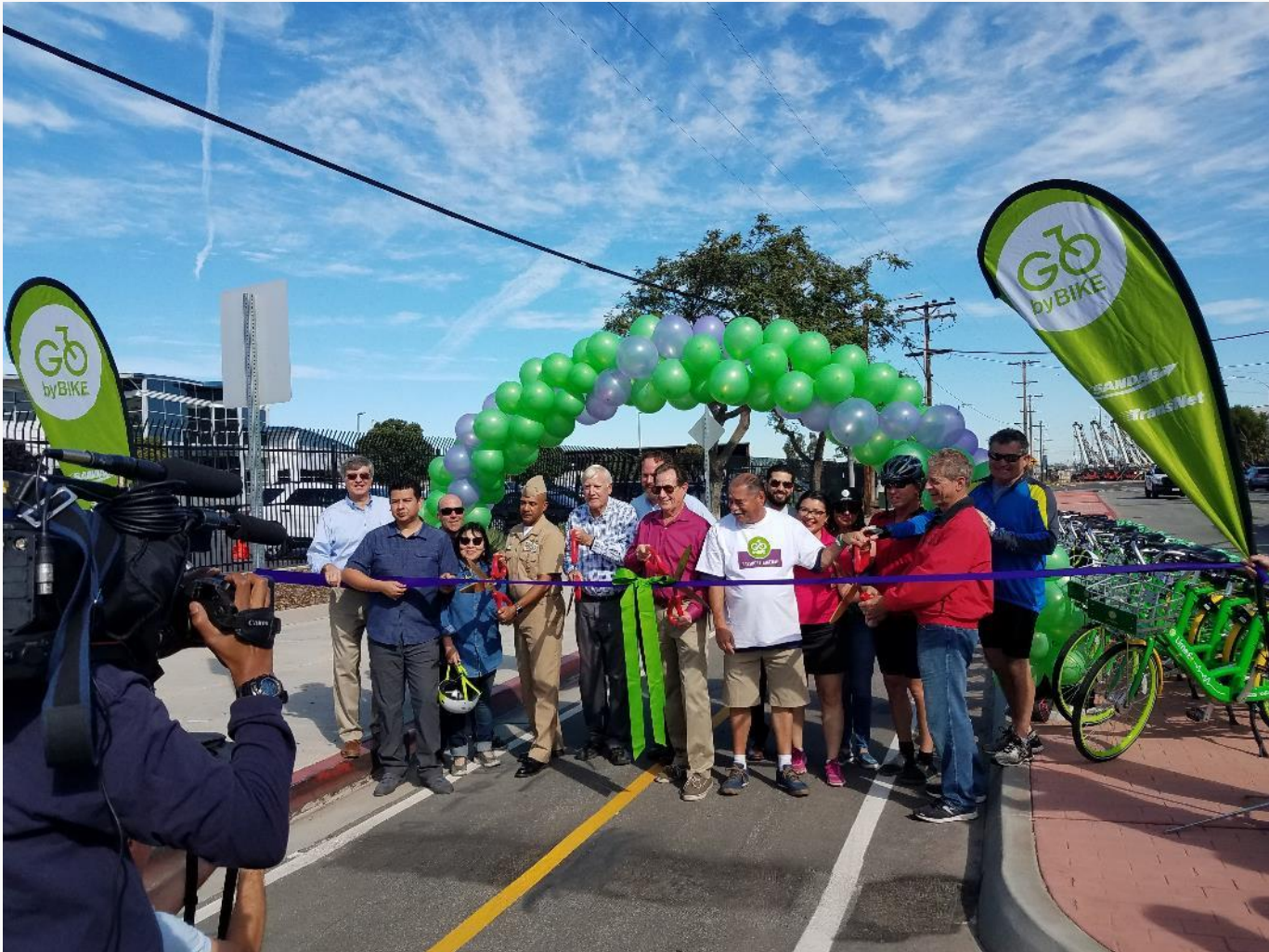




SEGMENT 4A COMPLETED IN 2015



SEGMENTS 4B AND 5A OPENED FEBRUARY 17, 2018



SEGMENTS 4B AND 5A OPENED FEBRUARY 17, 2018





BARRIO LOGAN SEGMENT



3842 13/16



BARRIO LOGAN – ALIGNMENT





NORTH OF 28TH STREET (EXISTING)





NORTH OF 28TH STREET (WITH PROJECT)





NORTH OF SAMPSON (EXISTING)



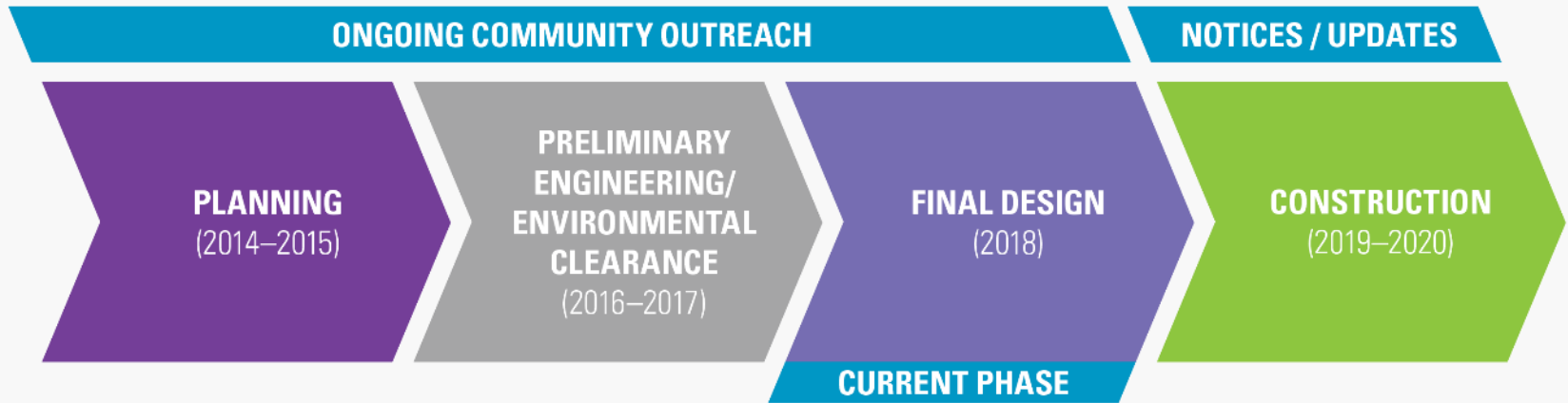


NORTH OF SAMPSON (WITH PROJECT)





BARRIO LOGAN PROJECT SCHEDULE



- Complete final design and obtain permits (2018)
- Construction (2019-2020)



BAYSHORE BIKEWAY

Stephan Vance

stephan.vance@sandag.org, (619) 699-1924

