



GSA Public Buildings Service

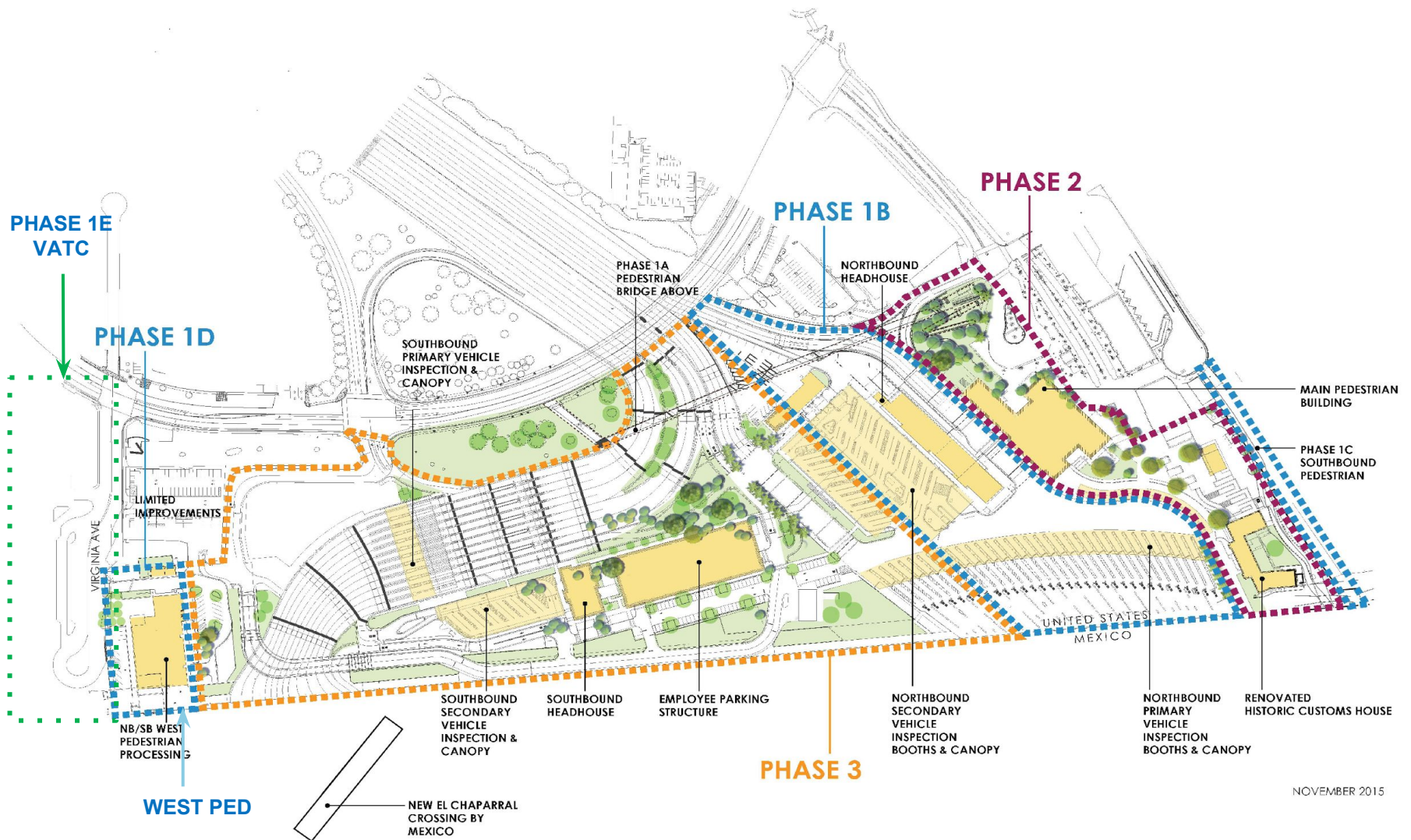
City of Chula Vista Briefing

San Ysidro Land Port of Entry





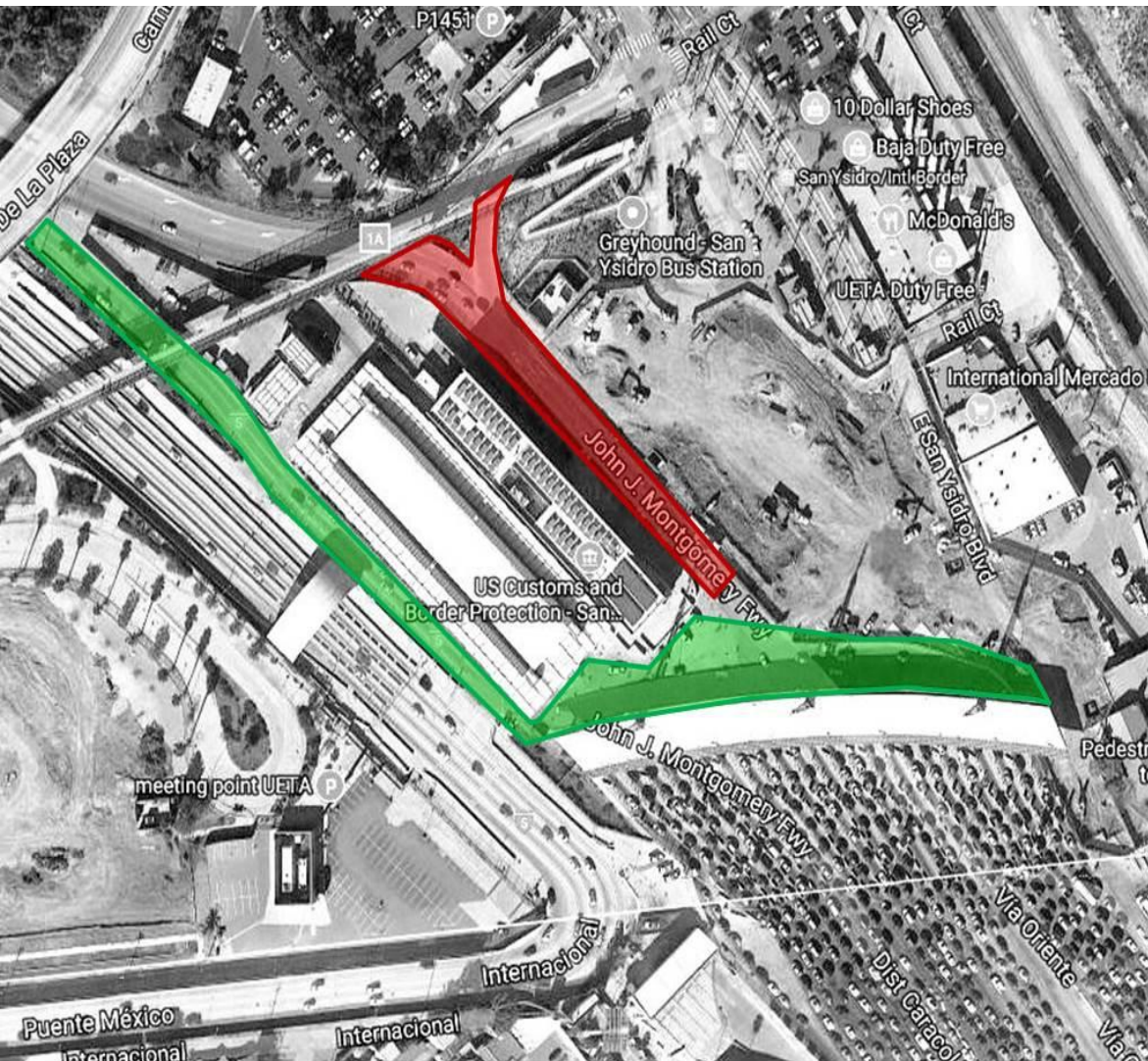
Project Overview



Phase 2 Project

- **Project includes:**
 - 22 lane Pedestrian and Administration Building
 - Renovation of the Historic Customs House
 - Pedestrian Plaza
- **Planned Impacts:**
 - Four consecutive night 12 hour closures of the easternmost access lanes beginning September 12th from 4:00 p.m. to 4:00 a.m. September 16th
 - Closures will start again on September 18th and continue nightly from 10 p.m. to 4 a.m. through December 30th

Skybridge Installation Lane Closures



Skybridge Installation Nightly Shutdown:

Start: Tuesday, Sept. 12 at
4 p.m.

Finish: Saturday, Sept. 16 at
4 a.m.

Skybridge Construction Nightly Shutdown:

Start: Monday, Sept. 18 at
10 p.m.

Finish: Saturday, Dec. 30 at
4 a.m.

I-5 South Realignment Project

- **Project includes:**
 - 7 construction stages
 - Lane tapering on southbound I-805 & I-5 freeways
 - One complete weekend lane closure (57 hours)
 - Reduction to 3 southbound I-5 lanes for 8 – 9 weeks
- **Duration:** September 2017 - June 2019

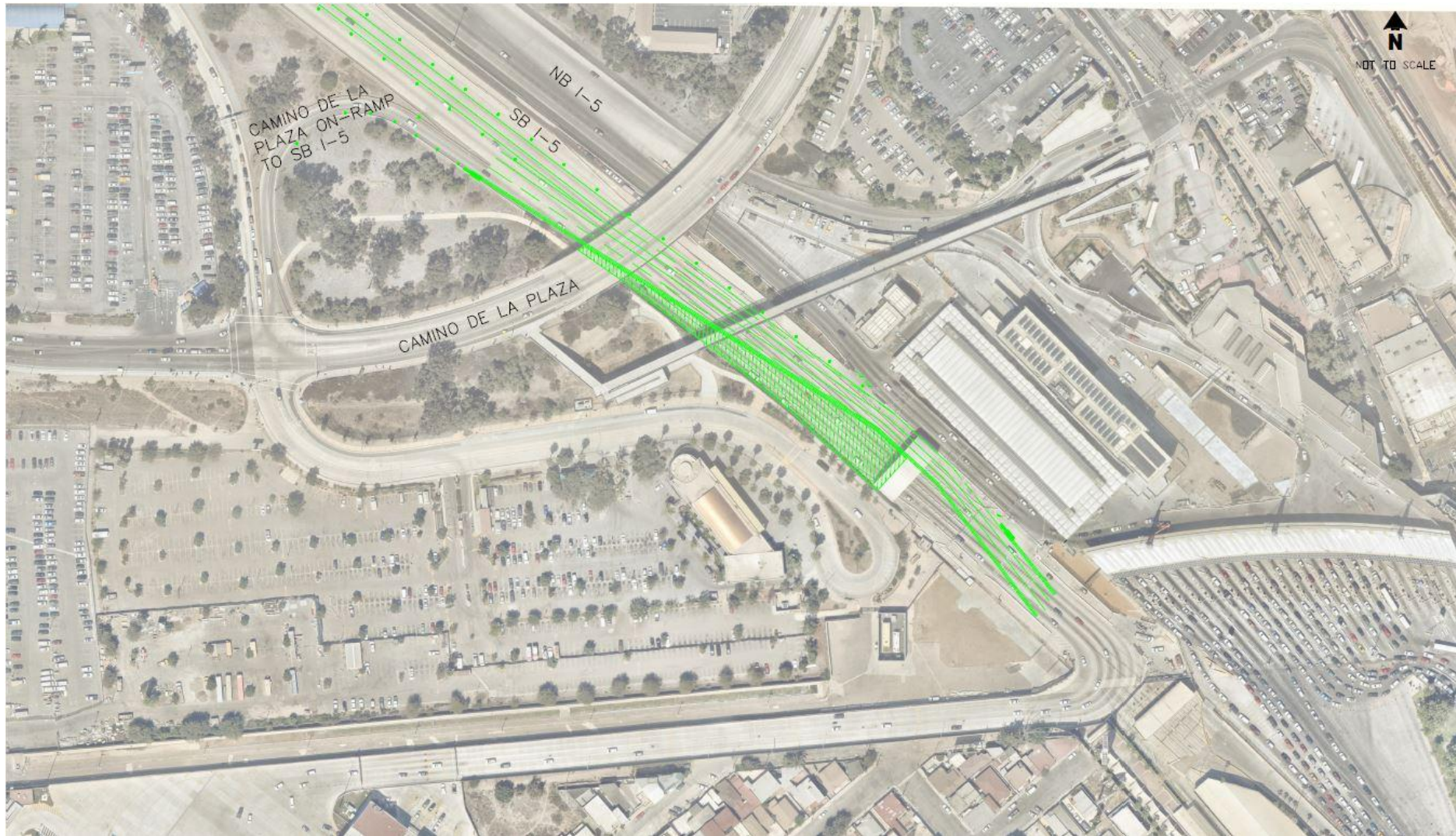
57 Hour Closure Map



Stages 1, 2, 3A, and 3B Overview



Stage 4 Overview



Stage 5 Overview



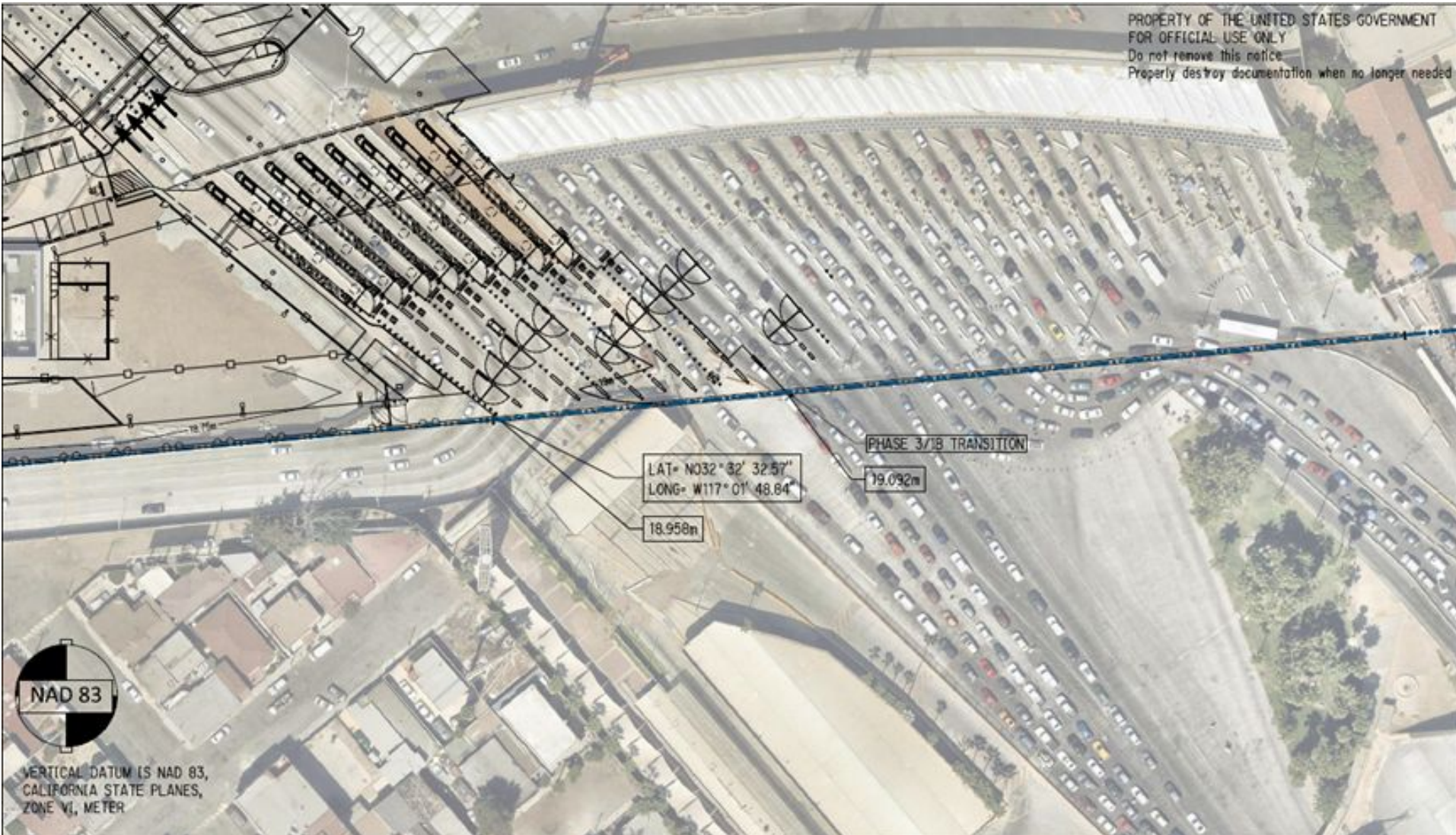
I-5 South Realignment Highlights

- **I-5 S closure at SYLPOE - 57 Hours**
 - Saturday (3 a.m) to Monday (12 p.m) complete southbound roadway closure; removal of southbound POV inspection canopy. SB POVs advised to use Otay Mesa LPOE
- **Stage 2**
 - Removal of cast in place lane barriers
- **Stage 3A & 3B**
 - Removal of cast in place lane barriers
- **Stage 4 – 8 to 9 Weeks**
 - SB POV lanes tapered down to 3 lanes

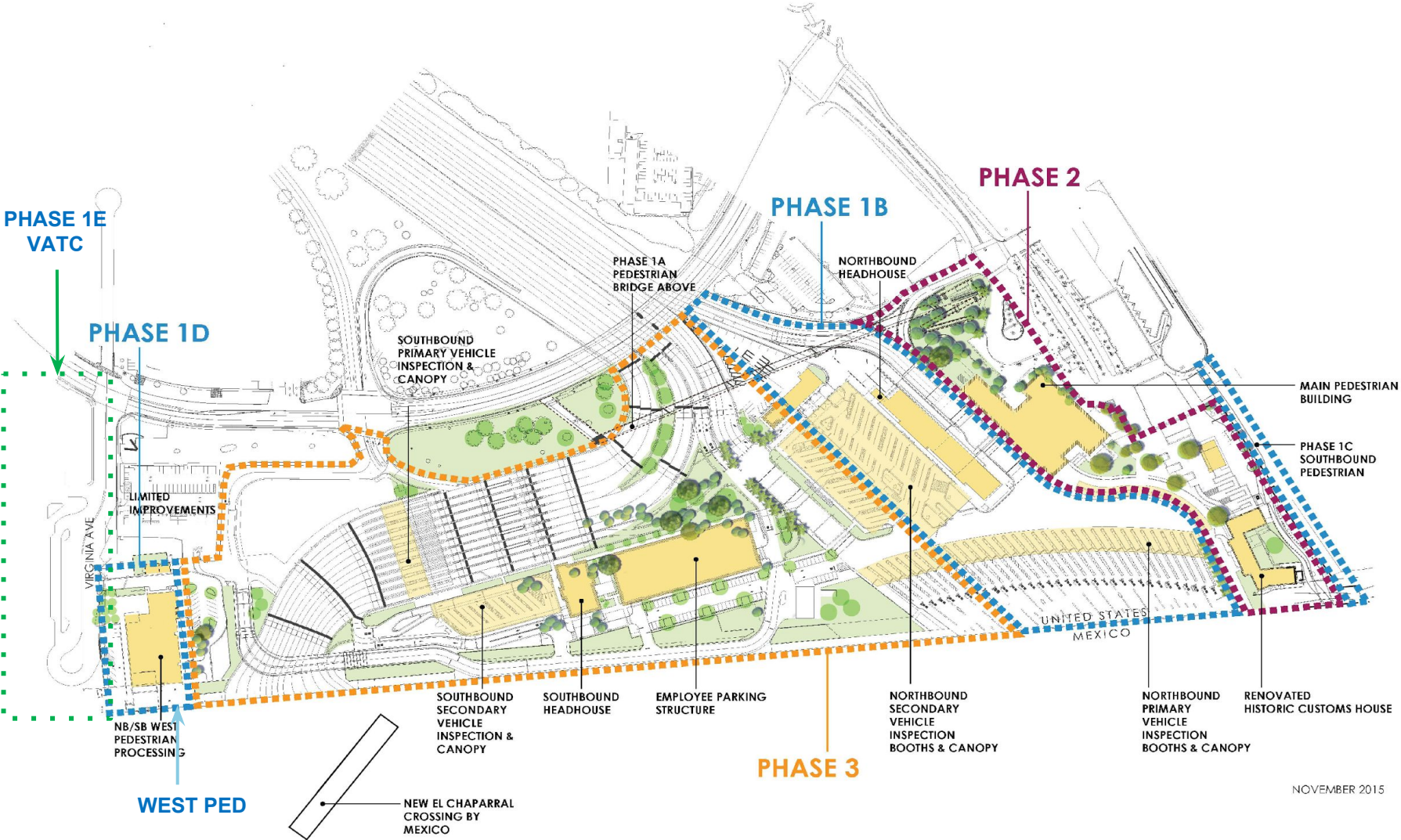
Stage 5 Overview



Project Overview - Additional POV Lanes



Stage 6 and 7 Overview



I-5 South Realignment Highlights

- **Stage 5 - 18 Months**
 - Temporary I-5 South realignment and curve are complete and open to the public
 - Number of SB POV lanes increases to four
- **Stage 6 - 1 Month**
 - Connection to permanent I-5 South realignment
- **Stage 7 - 1 Month**
 - New I-5 South connection to permanent infrastructure becomes operational

U.S. Communication Partners

- U.S. General Services Administration
- U.S. Customs & Border Protection
- California Department of Transportation (Caltrans)
- U.S. Department of State / U.S. Consulate in Tijuana
- County of San Diego
- City of San Diego
- City of Chula Vista
- City of National City
- City of Imperial Beach
- San Diego Association of Governments (SANDAG)
- San Diego Metropolitan Transit System (MTS)

Mexican Communication Partners

- Secretaria de Relaciones Exteriores (SRE)
- Consulado General de México en San Diego
- Secretaria de Comunicaciones y Transportes (SCT)
- Instituto de Administración y Avalúos de Bienes Nacionales (INDAABIN)
- Servicio de Administración Tributaria (SAT)
- Instituto Nacional de Migración (INAMI)
- State of Baja California
- City of Tijuana

GSA SOCIAL MEDIA POSTS



U.S. General Services Administration Pacific Rim Region is with Venecia Valencia at San Ysidro Port of Entry.

Published by Javier Fernandez [?] · August 30 at 11:31am · San Diego ·

¿Cuándo empieza y termina el cierre de 57 horas? ¿Por qué estará cerrado el cruce a El Chaparral? ¿Puedo cruzar a pie? ¿Cómo cruzo a México en carro?

Las respuestas a estas y otras preguntas se encuentran en nuestro documento de preguntas frecuentes en nuestro sitio de web, gsa.gov/5realign. También las puedes leer directamente aquí:

<https://go.usa.gov/xRAk5>



¿TIENES PREGUNTAS ACERCA DEL CIERRE DE 57 HORAS?

144,592 people reached

[View Results](#)

Consideration for Travelers

- Plan ahead - Leave Early
- Consider Transit
- “Stay local - Play local” during the 57 hour closure
- Northbound vehicle and bidirectional pedestrian crossing will not be affected

What Can You Do?

- Detour through the Otay Mesa Land Port of Entry
- Allot additional time
- Anticipate increased traffic due to planned road work
- Reduce speed through the construction zone and follow posted signage

Resources

- English & Spanish Media Availability
 - September 18 - 25, 2017
 - Onsite videography and photography by appointment only (GSA Escort Required)
- I-5 Realignment Project Website
 - www.gsa.gov/5realign
- Social Media
 - www.facebook.com/gsapacificrimregion
 - www.twitter.com/US_GSAR9
 - [#5Realign](https://twitter.com/5Realign)
- Andra Higgs, GSA Public Affairs Officer,
andra.higgs@gsa.gov, (415) 436-8778