



Strategies in Addressing Homelessness

Presented by:
DSD Housing Division
Police Department
Public Works Department

Homeless Population by Region

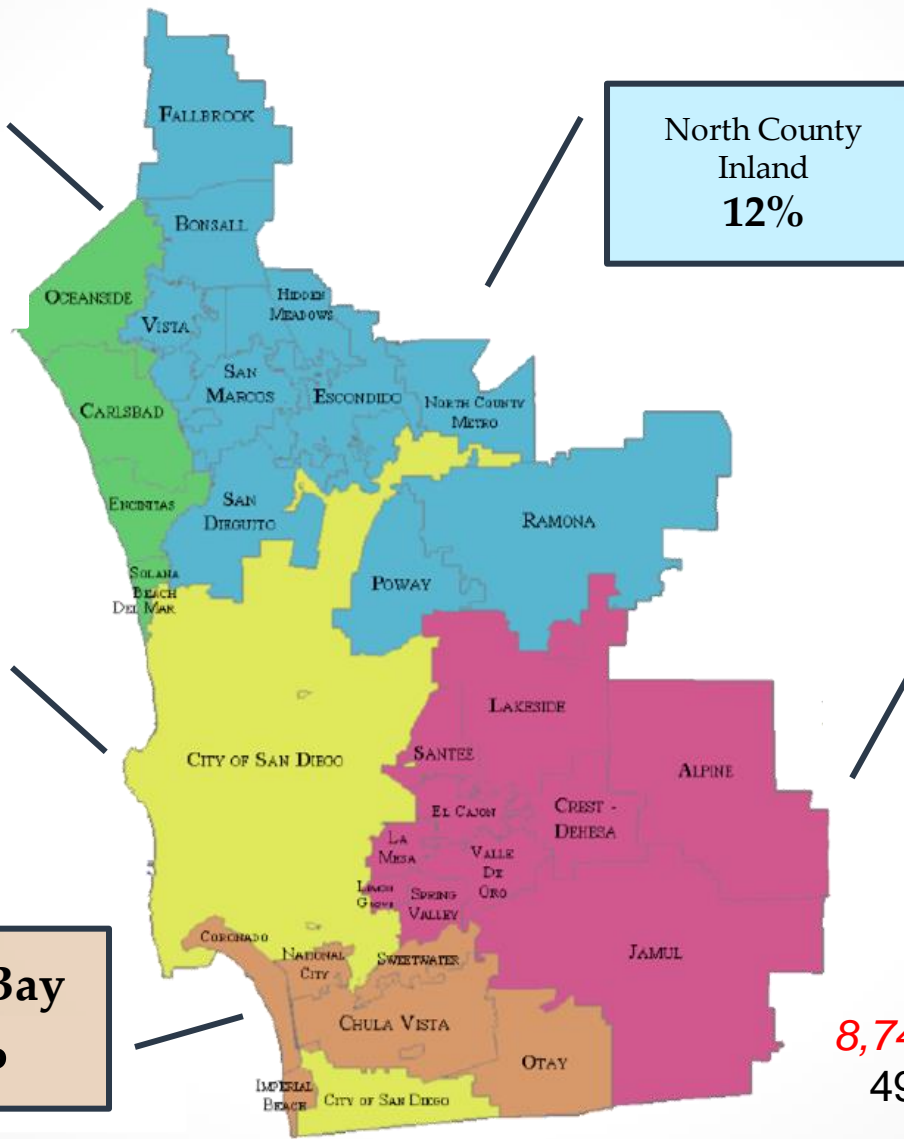
North County Coastal
7.5%

North County Inland
12%

City of San Diego
61.1%

East County
9.3%

South Bay
10%



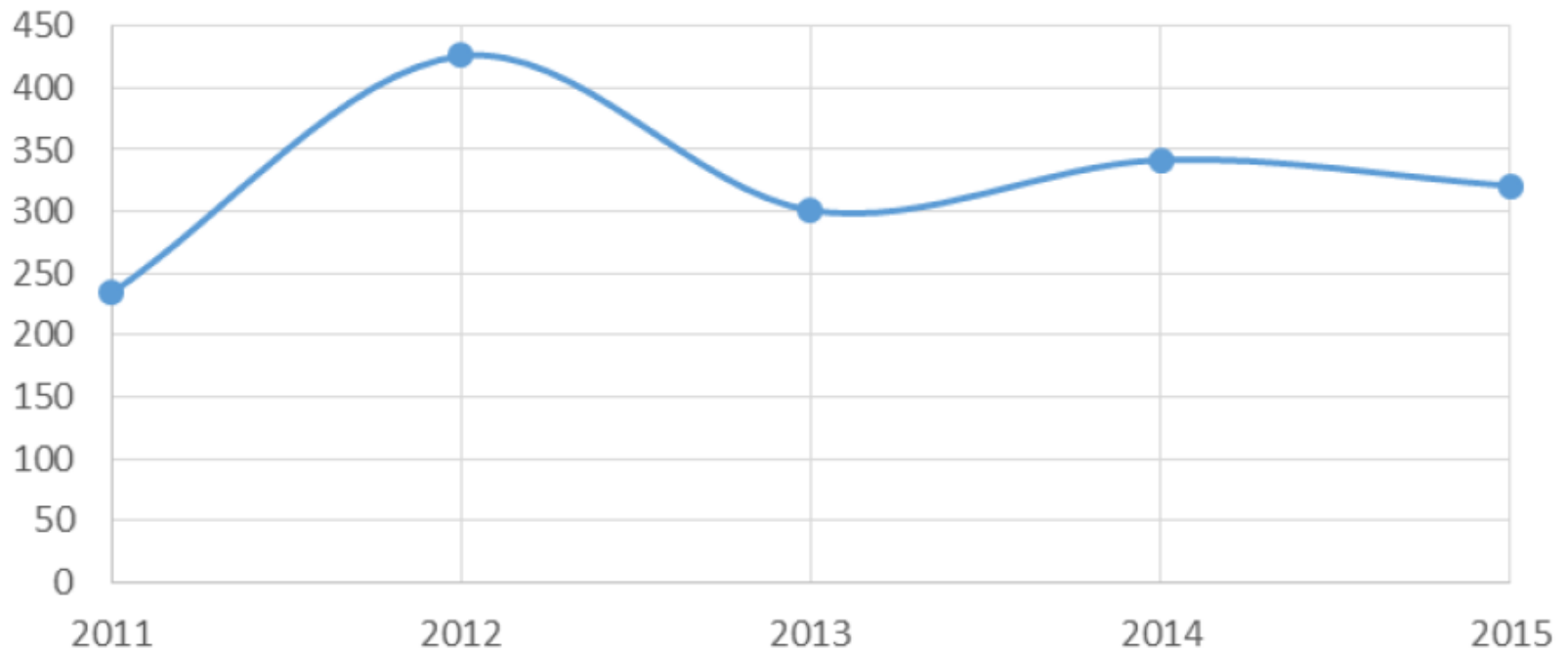
8,742 in San Diego County
498 in Chula Vista

Source: 2014 Point in Time Count Regional Breakdown of Homeless in San Diego County

Homeless within South Bay Region

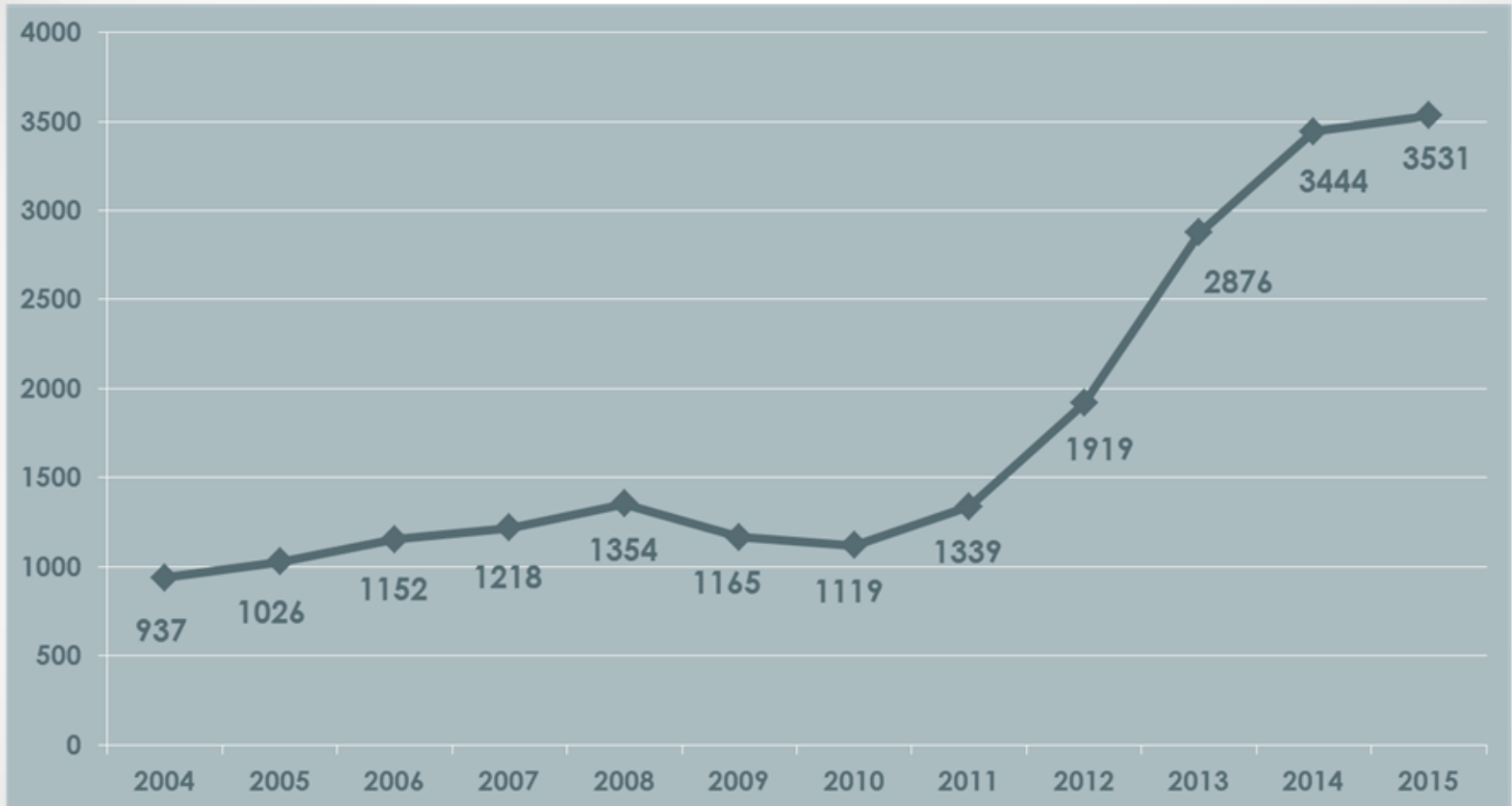
City	Sheltered	Un-sheltered	Total '15	Total '14
Chula Vista	177	321 103 Vehicle 35 Structure/Tent	498	505
Imperial Beach	0	46	46	48
National City	16	137	153	284
City of San Diego	2,733	2,765	5,538	5,199
San Diego Region	4,586	4,156	8,742	8,506

5 Year Trend of Unsheltered Homeless Chula Vista, 2011-2015



51.4% increase from 2010-2015
7% increase from 2013

Homeless Related CFS

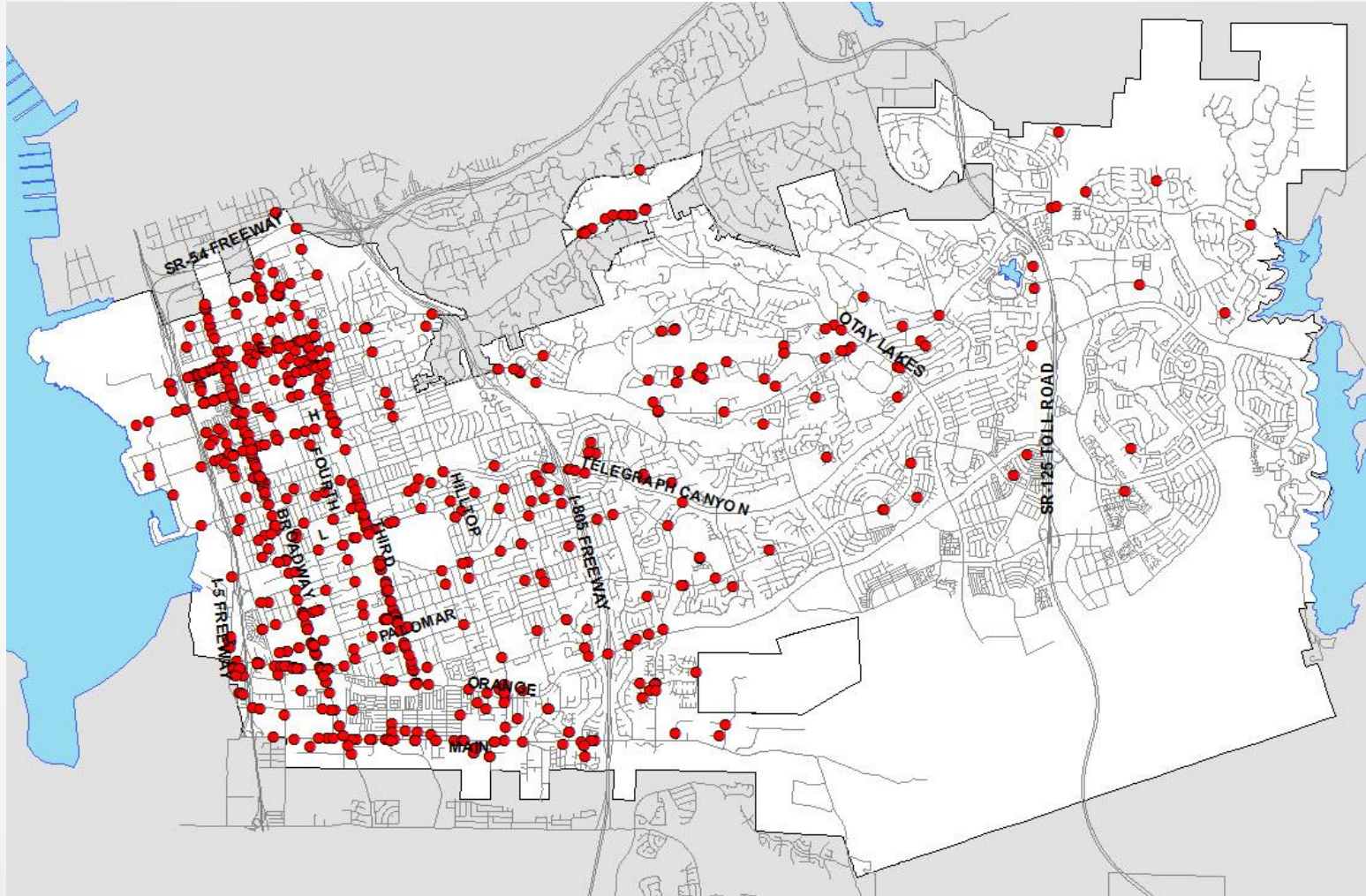


Transient related calls for service have increased 277% between 2004-2015

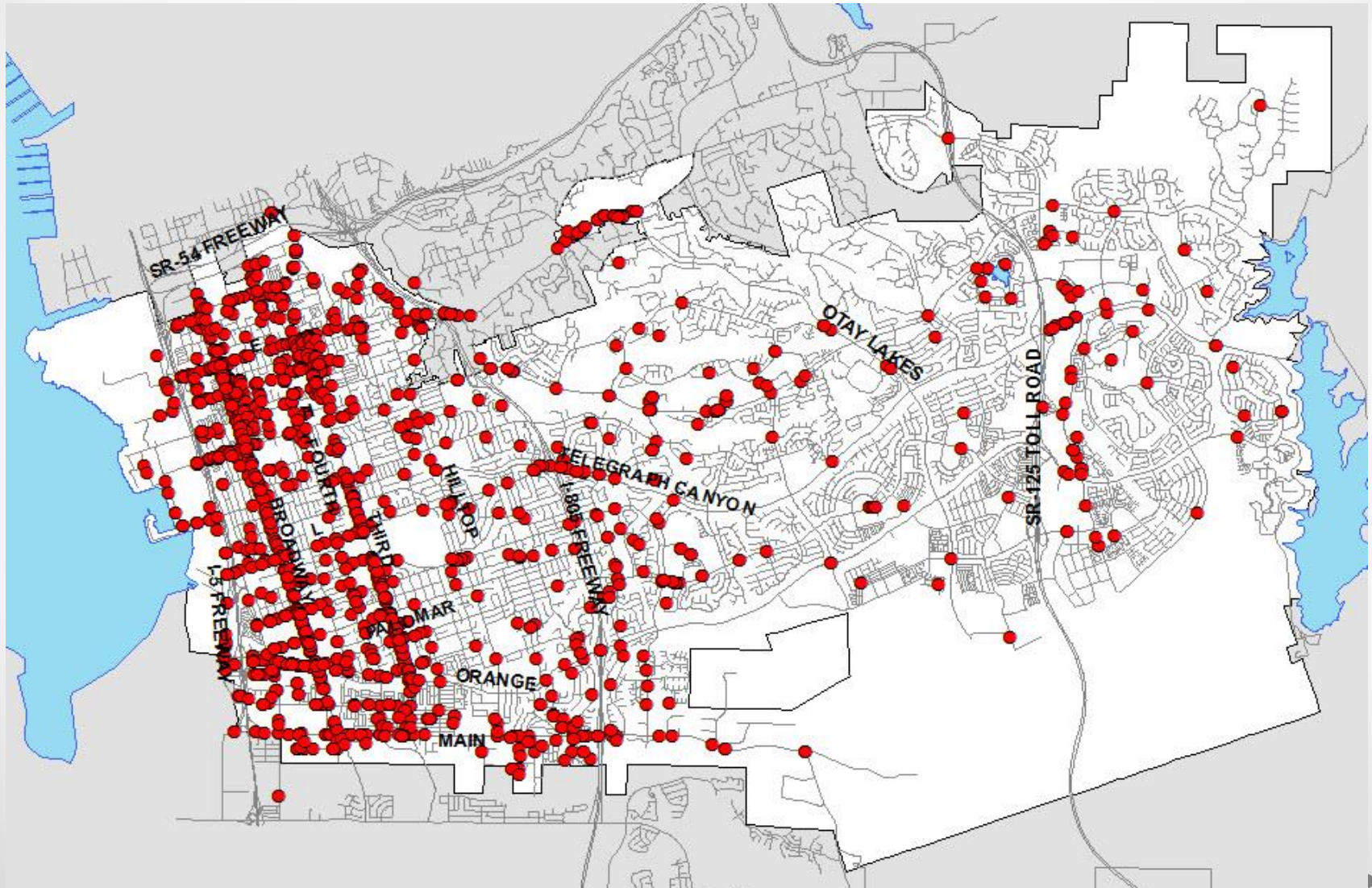
Calls for Service

- Primary Call for Service Types
 - Disturbance-Person
 - Check the Welfare
 - Person Down
 - Suspicious Person
 - Mental Health Evaluation

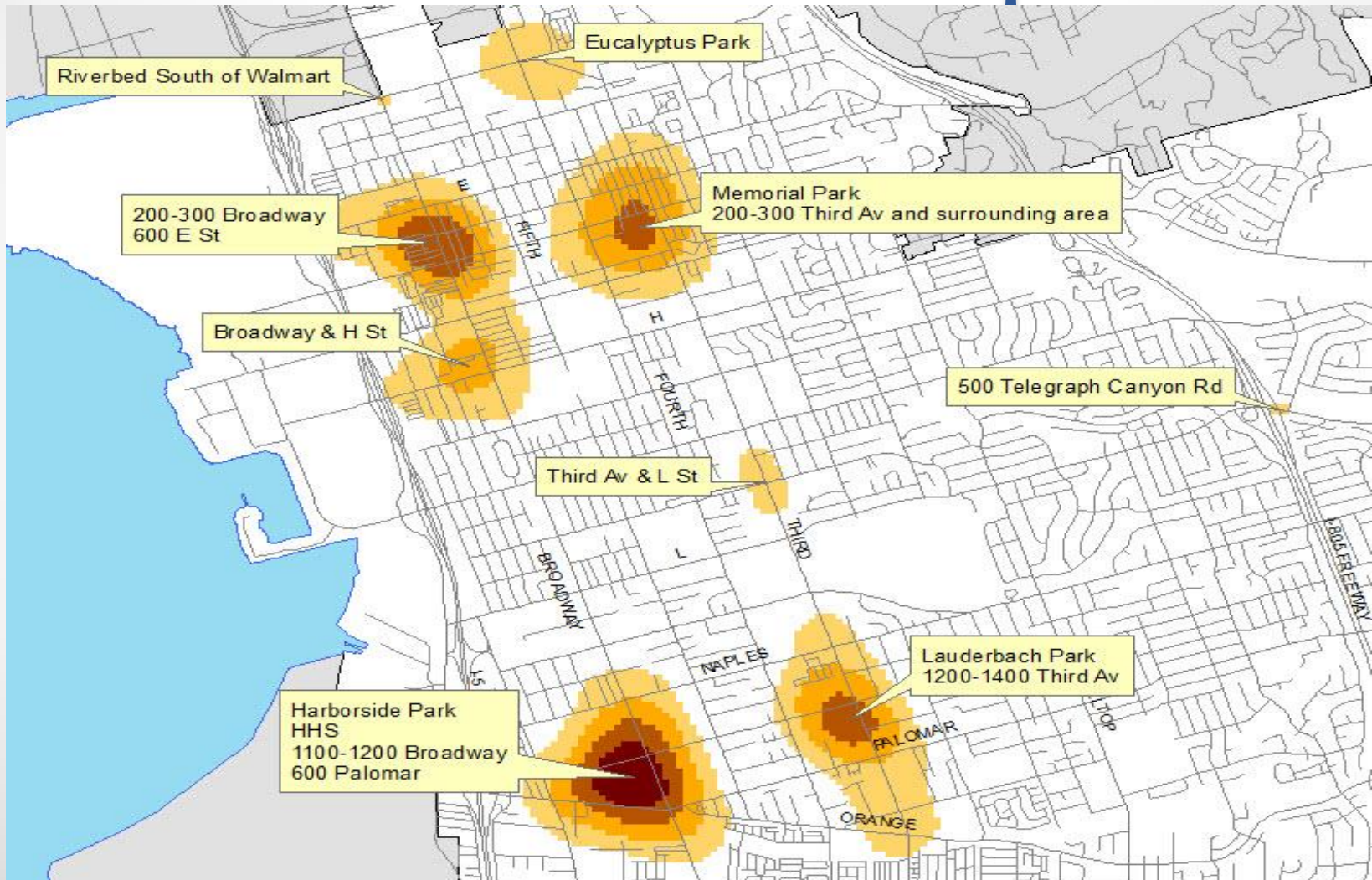
Transient Call for Service Locations – 2010



Transient Call for Service Locations – 2015



Transient Hotspots



2015 Crime Data

- Transients involved in 626 crimes
 - 297 narcotic related crimes
 - 111 warrant arrests or probation violations
 - 78 Violent Crimes including 3 attempted homicides (*19% of all violent crime*)
 - 72 burglaries or thefts

Note: Transient may be listed as suspect or victim

Community Issues Associated with Unsheltered Persons



Congregation and misuse of public facilities (e.g.. libraries and public parks)



Littering: shopping carts, trash bags of personal property, drug paraphernalia



Panhandling



Public Misconduct (e.g., public drunkenness, indecent exposure, urination in public, use of narcotics etc.)

Maintaining & Enhancing Chula Vista's Quality of Life

- Environment
- Safety and welfare of all citizens
- Preserving the civil rights of everyone
- More than just a temporary fix



City Efforts to Assist

Balance proactive outreach with enforcement of the law, while connecting members of the homeless population with resources that may help them transition from homelessness



Awareness

Increased awareness leads to understanding, which results in change.

In Place



- SBHAC Forums & Resource Guide
- Officer Resource Guide
- Training of Library and Public Works staff regarding criminal laws
- Communication with business owners, TAVA, Chamber of Commerce and other community members
- Crime Prevention through Environmental Design
 - Removing or altering street furniture
 - Appropriate landscaping that allows visibility

Recent Efforts



- Outreach and education to property/business owners and community as issues arise (e.g. responding to CSF, Coordinated Patrol & Outreach)

Proposed



- Proactive and comprehensive public awareness/Education campaign (e.g.. crime prevention tips, directed giving, community impacts)
- Train staff in CPTED principals for planning/design of future projects

SOUTH COUNTY DIRECTORY

Emergency Shelter,
Services & Food Assistance

Directorio de Albergues,
Servicios Sociales y
Asistencia de Comida de
Emergencia

For other assistance call
Para otro tipo de ayuda llame

2-1-1

 Developed by
South Bay Community Services 3/15



“Positive change, NOT spare change.”

Collaboration

Continue to build and enhance the Partnerships within and between City Departments, the County of San Diego, Service Providers and the Community

In Place



- Homeless Steering Committee
- South Bay Homeless Advocacy Coalition
- Annual Homeless Connect

Recent Efforts



- St. Rose of Lima's Day of Hope (give away of clothing, supplies each quarter) – Incorporating exchange of items
- Coordinated Patrol & Outreach lead by CVPD, and PW, with participation of the SD Dream Center and VA
- Coordinating shopping cart retrieval with contractor
- Downtown CV PBID – Safety & Hospitality Ambassadors

Proposed



- Hire Homeless Coordinator
- Employ the HOT Team model
- Expand City Homeless Steering Committee to include PD, Housing, Public Works, Code Enf and Fire
- St. Rose of Lima's Day of Hope – Proper disposal of items
- Continue to encourage participation of faith based, non-profit providers and other community stakeholders in the SBHAC
- Engage businesses & residents as part of the solution through public awareness/education campaign (e.g.. crime prevention tips, directed giving, community impacts)
- Encourage CV Charitable Foundation to focus resources on chronic homeless

“ Coming together is a beginning; keeping together is progress; working together is success.” Henry Ford

Collaborative Problem Solving

300 Church Avenue

- Problem: Transients camping in private parking lot and monopolizing use of public bench.
- Solution:
 - CVPD conducted extra patrol in the area for the weekend
 - Community Relations worked with the churches in the area to post no trespassing signs.
 - Education/Awareness Outreach to homeless and church of community impacts, best practices for dealing with trespassing and homelessness, services available



Enforcement

Proactively enforce city laws
to preserve the health and welfare of the community

In Place



- Posted signage for overnight camping/oversize vehicles at public facilities
- Issuing of citations related to overnight camping and municipal trespass
- Coordination and identification of encampments and high calls for service areas
- Patrol of problem areas as staff is available
- Promotion/ Outreach of Trespass Authorization Letter (Private Properties)
- Enforcement of trespassing laws on private properties with authorization
- Off-sale Alcohol Retailers Program

Recent Efforts



- Coordinated Patrol & Outreach lead by CVPD, Park Ranger, and PW on a weekly basis
- Extra Patrol and Enforcement in hot spot areas
- Continue to monitor aggressive panhandling activities throughout the City
- Return of shopping carts to owners



Proposed



- Employ HOT Team model
- Increased coordination with City Atty's Office and District Attorney related to penal code for misdemeanor offenses



We focus on the BEHAVIOR, not STATUS.

Coordinated Patrol & Outreach

Problem Areas

- Collaboration
 - Public Works
 - CVPD
 - Social Service Providers, as available
- Areas
 - Parks
 - Open spaces and public properties
- Process
 - Weekly basis
 - Notice of removal of accumulated property
 - 24-hours to remove property
 - Immediate removal if a public safety hazard or blocking public thoroughfare
 - Notice of Eviction
 - 72-hour to stop construction and/or habitation of illegal structures/encampments
 - Clearing of property, trash and debris



CHULA VISTA POLICE DEPARTMENT
315 Fourth Avenue
Chula Vista, CA 91910
Phone: 619-691-5151 non-emergency

24 HOUR SOLID WASTE REMOVAL NOTICE

Date of Notice:	Time:
Officer City Employee:	ID:
Location Address or Park:	

The City of Chula Vista will remove and detain solid waste that has accumulated at the location noted above.

Solid waste is being discarded or stored at this location in violation of **Chula Vista Municipal Code §§ 8.24.040, 8.24.210** and is a public nuisance. This notice provides you with a 24-hour advance warning of this action.

To avoid any confusion, please move any personal property you may have away from the waste piles in the area.

The solid waste piles shall be stored, without charge, for sixty (60) days. Individuals wishing to reclaim personal property collected by the City as part of the clean-up project, or to request an administrative hearing with regard to the detention or have questions regarding this action, may contact Lieutenant Mark Jones at 619-476-2406.

Thank you for your attention to this matter!



 CITY OF CHULA VISTA PUBLIC WORKS OPERATIONS OPEN SPACE DIVISION	
DATE: _____	
72 HOUR EVICTION NOTICE	
<ul style="list-style-type: none">• Notice to stop construction of illegal structure and/or encampment and habitation on City of Chula Vista property• Illegal structure and/or encampment will be torn down and items remaining will be removed and disposed of	
<p>This letter is to notify the individual(s) who participated in the above acts to stop and vacate the illegal structure and/or encampment. Also please inform others who may be considering these activities that it is unlawful as per the State of California Penal Code and the City of Chula Vista Municipal Code. Please see the following sections.</p>	
<p>California Penal Code - Title 14 Section 602 Trespassing prohibited</p>	
<p>Chula Vista Municipal Code - Section 2.66.080 Digging or defacing structures or monuments, or digging or removing vegetation prohibited</p>	
<p>Chula Vista Municipal Code - Section 2.66.090 Littering and/or dumping of any kind of debris prohibited</p>	
<p>Chula Vista Municipal Code - Section 2.66.140 Fines of all kind prohibited</p>	
<p>Chula Vista Municipal Code - Section 2.66.260 Camping and other overnight activities prohibited</p>	
<p>It is the position of the City of Chula Vista to encourage recreational use of parks and open space and to discourage unlawful activities. Ultimately, activities such as this translate into higher costs for the surrounding community, as cleanup and restoration must take place.</p>	
<small>City of Chula Vista Public Works Operations Open Space Division</small>	

Patrol & Outreach

Problem Areas – 2/9/16

- Areas

- Harborside Park (2)
- Across from 800 Palomar by the 5 freeway (1)
- Between 1259-1265 industrial (1)
- Orange Ave. (1)
- 3rd and Orange near bus stop (1)
- Lauderbach Park (9)
- 1364 Oleander
- Memorial Park (4)
- Friendship Park
- Eucalyptus Park (1)

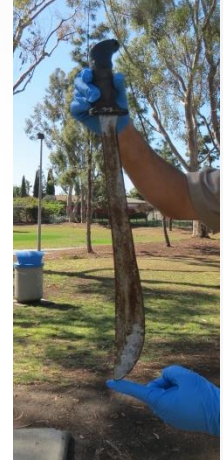
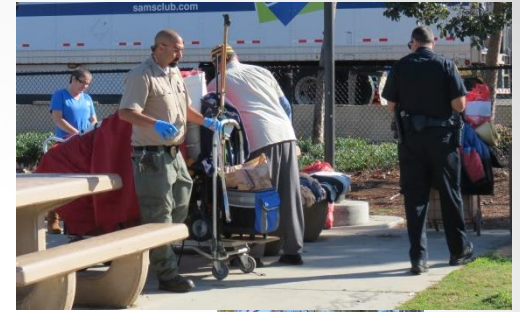


Patrol & Outreach

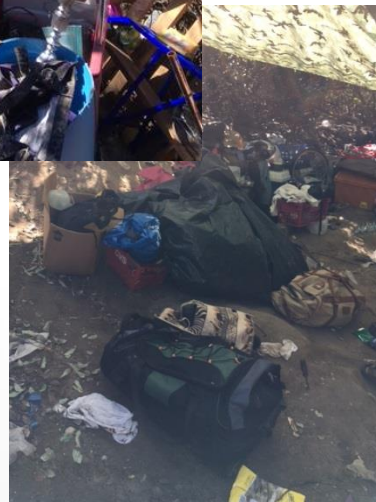
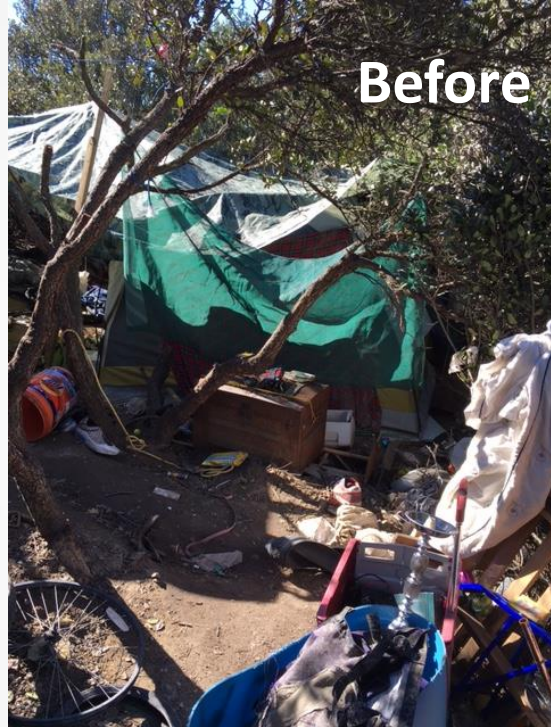
Problem Areas – 2/9/16

- Stats

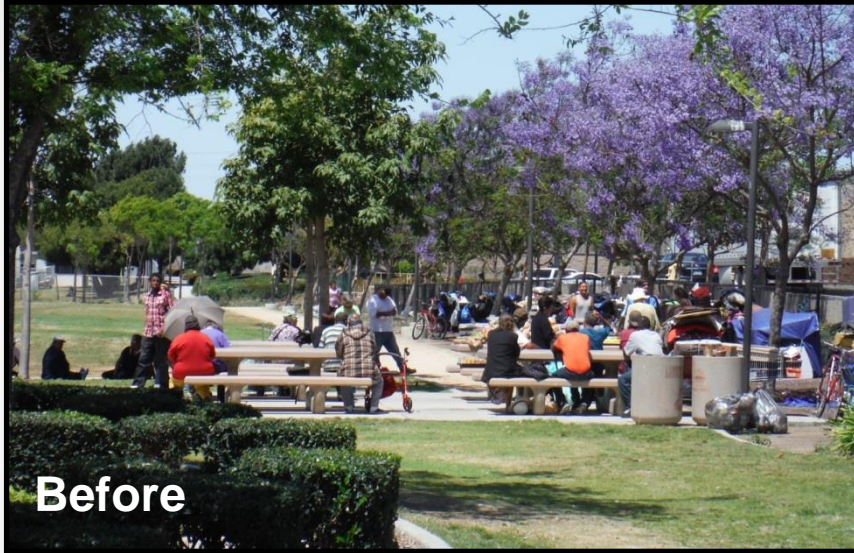
- **20 notices** (24-hr) posted on Monday, 2/8/2016 by Park Rangers
- **30 shopping carts** collected
- Disposal
 - **1 dumpster and 1 trailer**
 - **2 loads** of stake bed truck
 - 8 syringes found
- Storage
 - **2 trips of a truck and trailer** - Flair Banks area
- **Staffing – 15 CEO and 5 City employees** – PW Operations
- **5 people assisted** with services/housing
- **8 hour day**



Encampment



Harborside Park



Memorial Park



Before

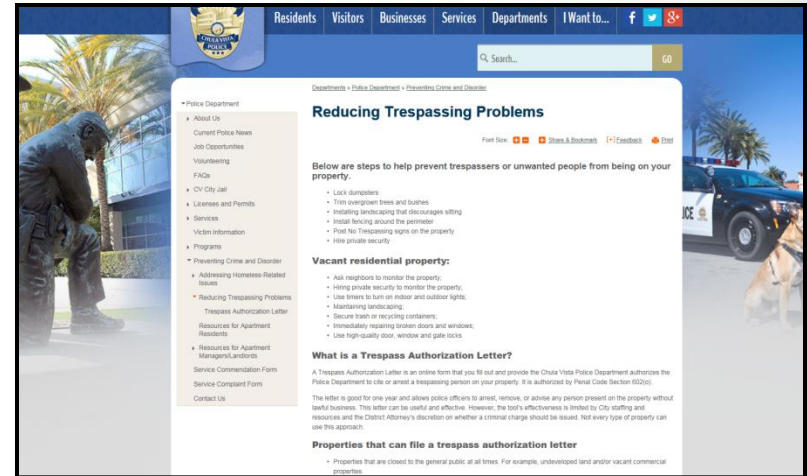


AFTER

Private Properties

Trespassing/Encampments

- Collaboration
 - City Attorney's Office
 - CVPD
 - DSD – Housing & Code Enforcement
 - District Attorney's Office
 - Social Service Provider
 - Private Property Owner
- Process
 - Promotion of Trespass Authorization
 - Education & Awareness
 - Community impacts
 - Best practices, CPTED analysis to secure property
 - Resources available
 - Enforcement of trespassing with owner authorization
 - Notification and abatement of violations



Housing

Increase supply/availability of affordable service enriched housing to rapidly connect homeless with appropriate housing

In Place



- Transitional Housing
- Rotational Winter Shelter
- Cold Weather Motel Vouchers
- Shelter Plus Care Units
- Homeless Prevention & Rapid Re-Housing (Rental Assistance)
- Safe Parking Lot

Recent Efforts



- Chula Vista 5 Initiative








Proposed



- Engage CoC in expanded Housing \$ in South Bay
- Work with County HCD on Section 8 housing vouchers for new SMI target
- Encourage VASH Vouchers
- Solicit Landlord participation
- Zoning updates to accommodate housing alternatives

*A **True** Home - A decent place that supports human dignity and development, provides stability and connects one to a larger community.*

Local Housing Resources

Program	Helps Chronic	Helps Episodic
Transitional Housing Beds		
Rotational Winter Shelter		
Cold Weather Motel/Hotel Vouchers		
Shelter Plus Care Units		
Homeless Prevention & Rapid Re-Housing		
Safe Parking Lot -Turning the Hearts		
Chula Vista 5 Initiative		

Local Housing Resources

Program	Target Population	Capacity
Transitional Housing Beds	DV Families Youth	117 beds
Rotational Winter Shelter	General	30 beds (8 weeks only)
Cold Weather Motel/Hotel Vouchers	General	(28 days max)
Shelter Plus Care Units	Chronic Seniors	11 units
Homeless Prevention & Rapid Re-Housing	General	15 households
Safe Parking Lot -Turning the Hearts	General	10-25 cars/night
Chula Vista 5 Initiative	Chronic/ Mental Health	5 persons

Road to Recovery: Roger's Story

- Veteran with Substance Abuse Issues
- Shelter Resistant
 - 20 year Lauderbach Park resident
 - "My park...only leaving dead or handcuffed"
- Success & Lessons Learned – Road to Recovery
 - PW and CVPD Outreach Team – building trust and working for over 6 months
 - Success – Feb 23 ready to seek assistance
 - No bed/program ready when he was ready
 - No single point of contact to coordinate
 - Many hands and hours spent to help
 - Placed at McAllister for detox



Services

Increase the coordination of services with housing and direct outreach to homeless

In Place



Resource Information

- Officer Resource Guide
- SBHAC Directory of Services

Homeless Connect

South Bay Homeless Connect



"Connecting homeless to the resources that make the difference"



Recent Efforts



St. Rose of Lima's Day of Hope (give away of clothing, supplies each quarter)

Participation of the SD Dream Center in Coordinated Patrol & Outreach

Proposed



Employ Hot Team model

County of San Diego – PERT Clinician

Increased coordination with the County in service delivery

Increased coordination with the VA in service delivery

Engage faith based community in SBHAC and best practices in addressing needs

Focus grants funds for services addressing chronic homeless

Evaluate programs to facilitate directed giving



Working Together

- County of SD Health and Human Services
- Non-profit Service Providers
- Faith Based Organizations
- Veteran's Affairs
- City
 - DSD Housing
 - Public Works
 - Chula Vista Police Department
- Local Businesses
- Citizens





Addressing the Issues

What's Missing?

- Local resources
- Strong collaborative partnerships
 - Leverage/Coordinate Resources
- Service providers experienced with chronic homeless
- Street Level Outreach
- Supportive Housing

Proposed Options

- Dedicated staff for focused and sustainable efforts
 - Coordination
 - Enforcement
 - Clean up/Abatement
- Pursue additional funding opportunities
- Comprehensive Community Outreach Campaign
- Explore supportive housing between County & City

Next Steps

- Continue to implement a comprehensive and balanced strategy
 - Proactive outreach and education
 - Enforcement of the law
 - Connecting homeless population with resources to transition from homelessness
- Requests through the budget process
 - Additional resources for sustainable efforts



Special Thanks!

- Lt. Mark Jones, CVPD
- Lt. Henry Martin, CVPD
- Sgt. Francis Giaime, CVPD
- David Savage, PW Supervisor
- Sam Alzubaidi, PW Supervisor Park Ranger
- Hugo Martinez, PW Parks
- Armando Ramirez, PW Parks

