

Chula Vista Elementary School District: Accelerating Innovation

*Report to the
Chula Vista City Council
January 14, 2014*





District Demographics

**45
Schools**

**29,263
Students**

**9,806 English
Learners**

**5 Charter
Schools**

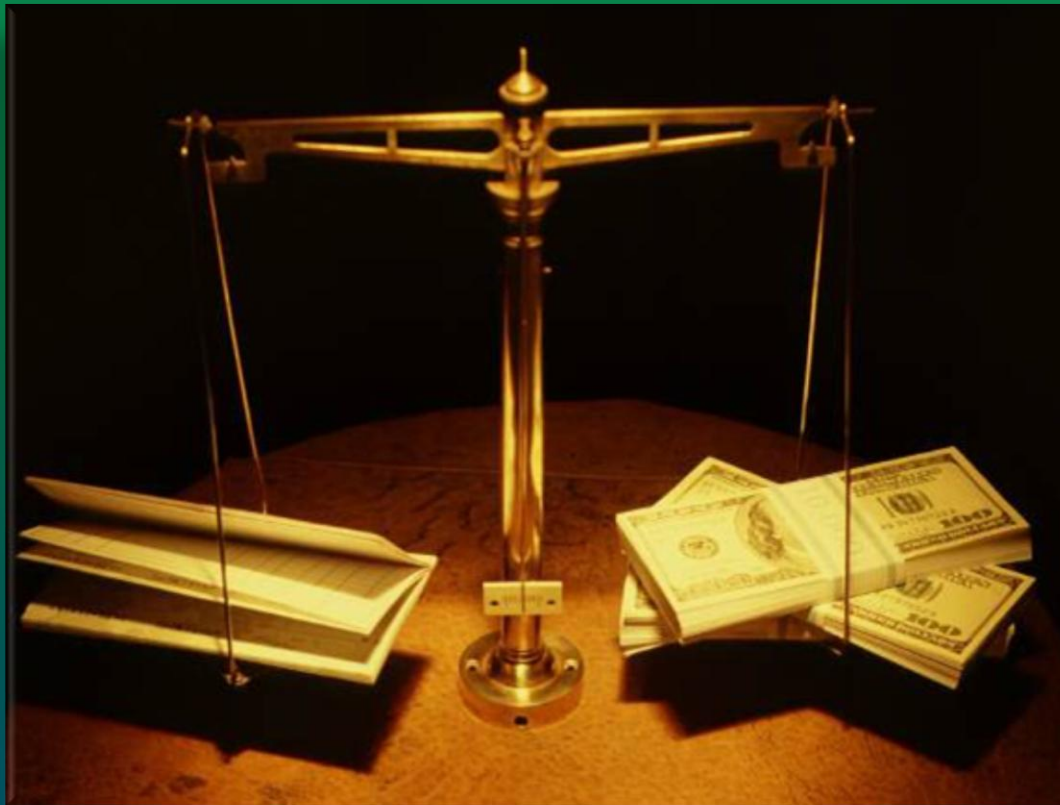
**35 Title I
Schools**

**52%
Free/Reduced
Price Lunch
Program**

Pivotal Time of Monumental Changes



Fiscal Changes



2013-14 State Budget Major New Items



- Local Control Funding Formula (LCFF)
- K-3 Class Size Reduction at 24:1
- Common Core State Standards (CCSS) Funding
- Local Control and Accountability Plan (LCAP)
- Proposition 39 Grant (Energy Efficiency)



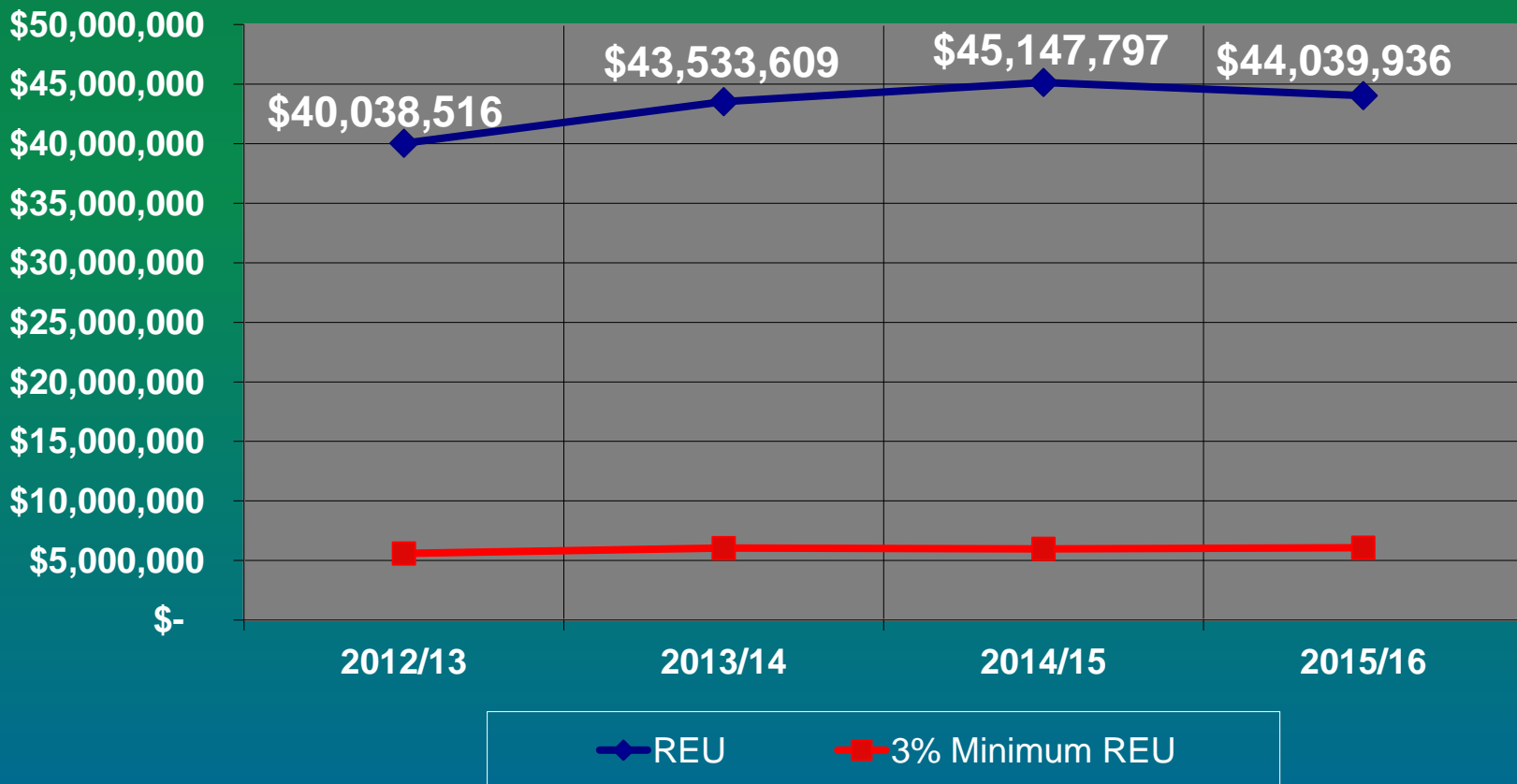
LCFF

- The LCFF replaces the revenue limit and most state categorical funds.
 - ✓ Goal is to restore to 2007-08 full funding by 2020-21, but annual LCFF funding will continue to depend on economic conditions.

Multiyear Projection 2012-13 Through 2015-16



Amount Reserved for Economic Uncertainties (REU)
vs. 3 Percent Minimum Reserve by Fiscal Year



Average Ending Reserve Balances



<i>Type of District</i>	<i>2011-12 State Certified Reserve for Economic Uncertainties</i>
Averages for:	
Unified School Districts	15.44%
High School Districts	19.79%
Elementary School Districts	23.75%
CVESD	21.99%
CVESD 2012-13 Unaudited Balance	21.52%
CVESD 2013-14 First Interim Balance	21.65%

Facility Changes





Proposition E

- \$90 million authorization.
- 69 percent voter approval.
- Three financings: 2013, 2015, and 2018.
- 30-year amortization.
- No Capital Appreciation Bonds (CABs).
- Approximately \$29 per \$100,000 of assessed valuation per year.
- No funds for salaries or pensions.

Ultimate Goals of Proposition E



- Fund improvement at the 31 school sites located within the School Facilities Improvement District.
- Enhance educational facilities to create a safe and sustainable environment supportive of 21st century teaching and learning.
 - ✓ Install infrastructure to sustain schools for next 30 years.
 - ✓ Enhance energy efficiency of facilities.
 - ✓ Provide wireless technology to sites.

Facilities By Year Constructed, Year Modernized, and Estimated Costs



	School	Year Constructed	Year Modernized	Estimated Improvement Cost
2014	RICE ELEMENTARY SCHOOL	1938	1996	\$ 5,903,031
	CASTLE PARK ELEMENTARY SCHOOL	1952	1996	\$ 5,052,767
	ROSEBANK ELEMENTARY SCHOOL	1952	1996	\$ 4,241,000
2015	VISTA SQUARE ELEMENTARY SCHOOL	1953	1996	\$ 3,892,330
	HILLTOP DRIVE ELEMENTARY SCHOOL	1943	1997	\$ 4,167,007
	ALLEN ELEMENTARY SCHOOL	1947	1997	\$ 4,140,208
2016	FEASTER CHARTER SCHOOL	1950	1997	\$ 5,377,678
	MONTGOMERY ELEMENTARY SCHOOL	1950	1997	\$ 3,034,323
	HARBORSIDE ELEMENTARY SCHOOL	1953	1997	\$ 4,633,558
	KELLOGG ELEMENTARY SCHOOL	1958	1997	\$ 4,301,308
	SUNNYSIDE ELEMENTARY SCHOOL	1959	1997	\$ 3,392,582
	COOK ELEMENTARY SCHOOL	1954	1999	\$ 2,388,962
	PALOMAR ELEMENTARY SCHOOL	1959	1999	\$ 1,063,663
	HALECREST ELEMENTARY SCHOOL	1961	1999	\$ 1,295,723
	MUELLER CHARTER SCHOOL	1955	2000	\$ 3,359,170
LAUDERBACH ELEMENTARY SCHOOL	1956	2000	\$ 3,541,449	

Modernization in 1996 and 1997 was minimal in scope and excluded the following major items: Underground Utilities, Window Replacements, Asphalt Resurfacing, HVAC Replacements, Irrigation Upgrades, Interior Finishes, and Cafeteria/Food Services. Estimates are subject to change.

Facilities By Year Constructed, Year Modernized, and Estimated Costs



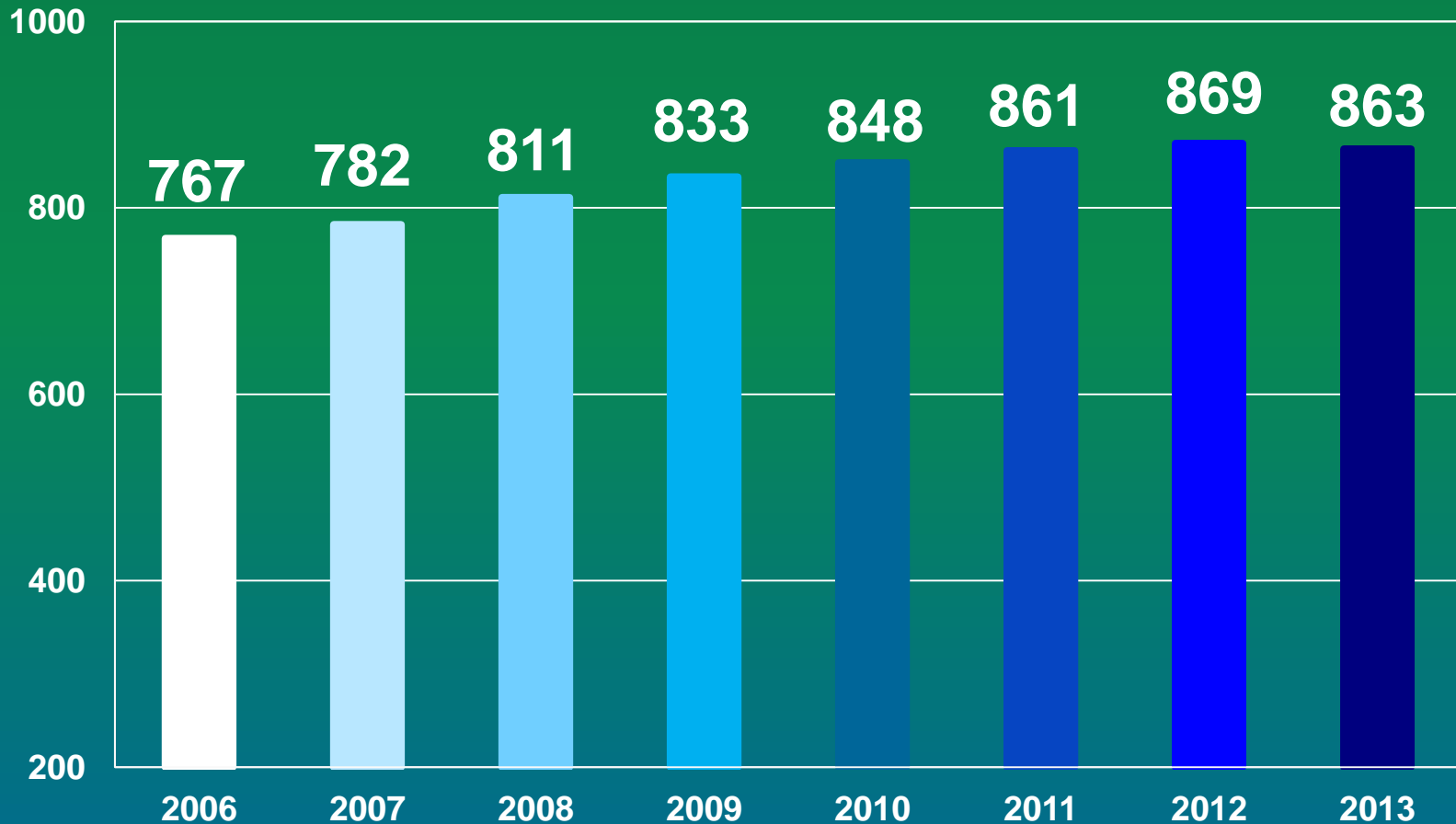
	School	Year Constructed	Year Modernized	Estimated Improvement Cost
2018	JUAREZ-LINCOLN ELEMENTARY SCHOOL	1970	2000	\$ 2,102,422
	FINNEY ELEMENTARY SCHOOL	1961	2001	\$ 3,043,887
	VALLE LINDO ELEMENTARY SCHOOL	1967	2002	\$ 1,229,493
	SILVER WING ELEMENTARY SCHOOL	1968	2002	\$ 2,059,944
	VALLEY VISTA ELEMENTARY SCHOOL	1969	2002	\$ 1,152,128
	PARKVIEW ELEMENTARY SCHOOL	1970	2002	\$ 1,405,804
	LOS ALTOS ELEMENTARY SCHOOL	1971	2002	\$ 2,489,021
	ROGERS ELEMENTARY SCHOOL	1962	2003	\$ 1,532,474
	LOMA VERDE ELEMENTARY SCHOOL	1964	2004	\$ 2,829,665
	ROHR ELEMENTARY SCHOOL	1965	2004	\$ 3,089,122
	OTAY ELEMENTARY SCHOOL	1975	2005	\$ 1,246,342
	TIFFANY ELEMENTARY SCHOOL	1975	2005	\$ 1,029,693
	CHULA VISTA HILLS ELEMENTARY SCHOOL	1989	--	\$ 1,580,768
	CHULA VISTA LEARNING COMMUNITY CHARTER SCHOOL	2001	--	\$ 3,111,466
	CLEAR VIEW ELEMENTARY SCHOOL	1991	--	\$ 1,526,053
	TOTAL (All 31 Sites)			\$89,213,041

Modernization from 1999 through 2005 was from 1998 Proposition JJ funds but excluded the following major items: Asphalt, Concrete, Partial Window Replacements, HVAC Replacements, and Cafeteria/Food Services. Estimates are subject to change.

Academic Changes

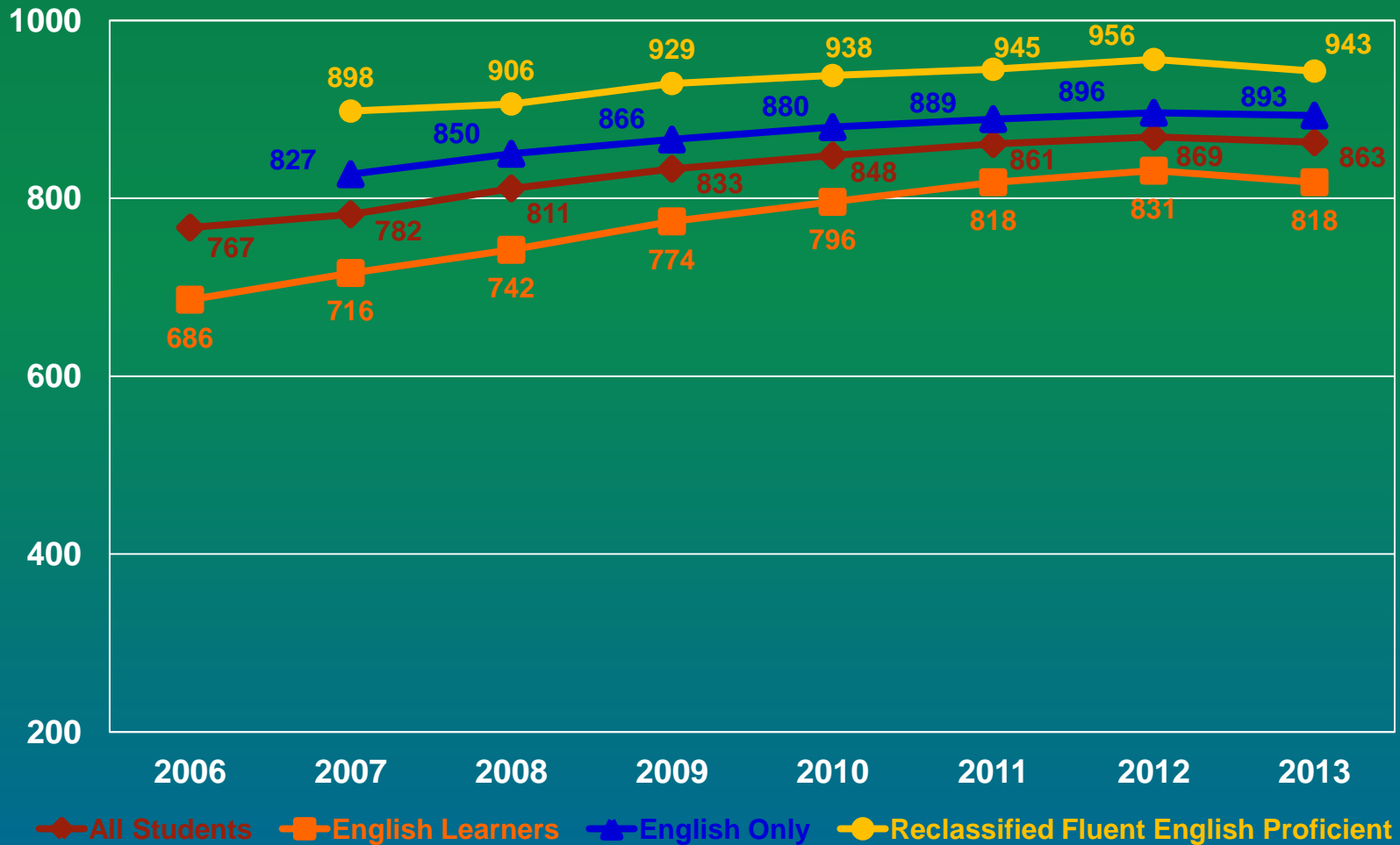


Academic Performance Index (API)





API



CVESD vs. County and State Grades 2-6



	2013 API
CVESD	863
San Diego*	844
State of California	810

*San Diego County Median API



Today's Learner





facebook

December 2010



Facebook

If Facebook were a country it would be the

world's 3rd largest country

(after China and India)

and 2x the size of the U.S. population

Facebook = +



75% of Brand 'Likes' come from advertisements

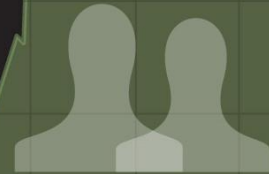
Fastest growing segment of users:



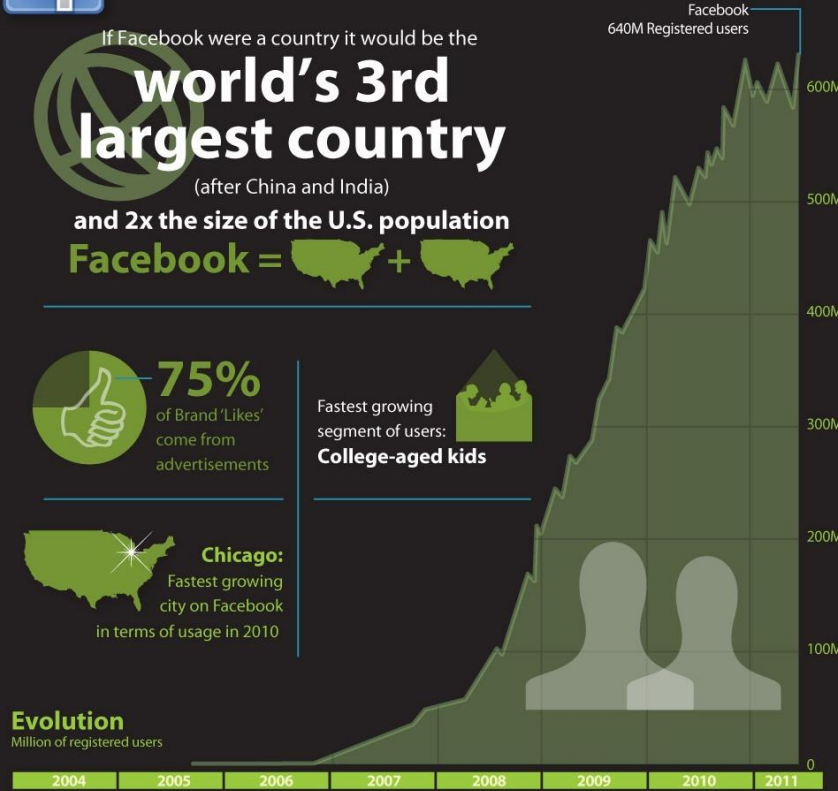
College-aged kids



Chicago: Fastest growing city on Facebook in terms of usage in 2010

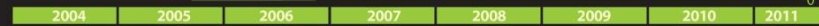


Facebook
640M Registered users



Evolution

Million of registered users

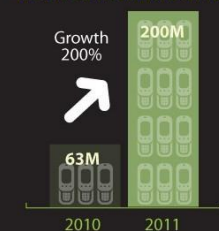


During the average 20-minute period in 2010, there were:

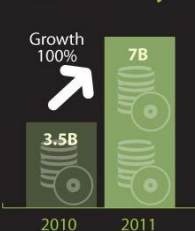
5870,000 wall posts | **2,716,000 photos uploaded** | **10,208,000 comments posted**

Facebook 2010 - 2011 Growth

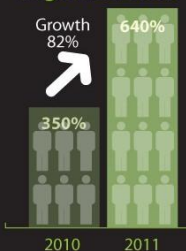
Users accessing via their Mobile Device



Pieces of Content Shared Weekly



Registered Users





The Secret Sauce

Moving from having to learn to
wanting to learn!



Relevant
Engaging
Adaptive
Accountable

Transform



CCSS Overarching Goals

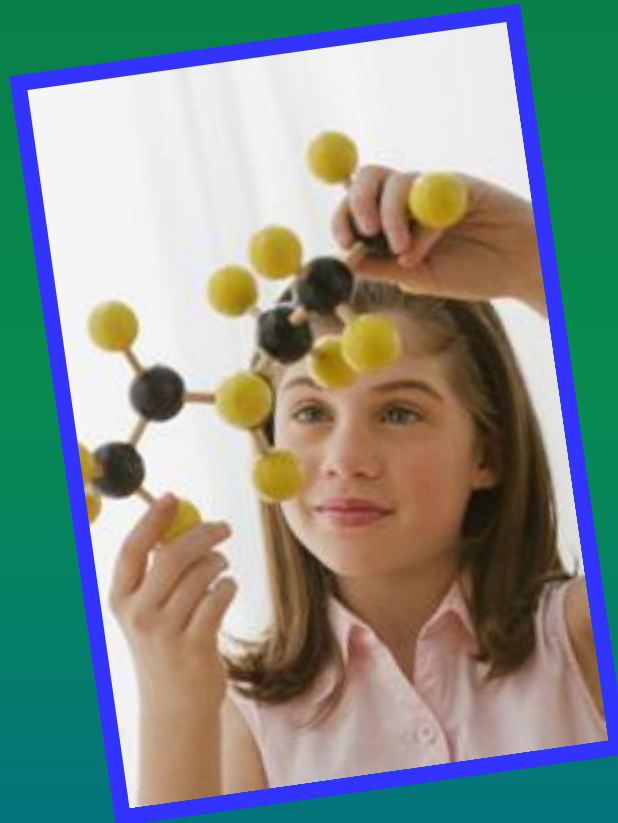
Ensure that our students are ...



Prepared to succeed in a global economy and society.

CCSS Overarching Goals

Ensure that our students are ...



Provided with rigorous content and applications of higher knowledge through higher-order thinking skills.

CCSS Overarching Goals

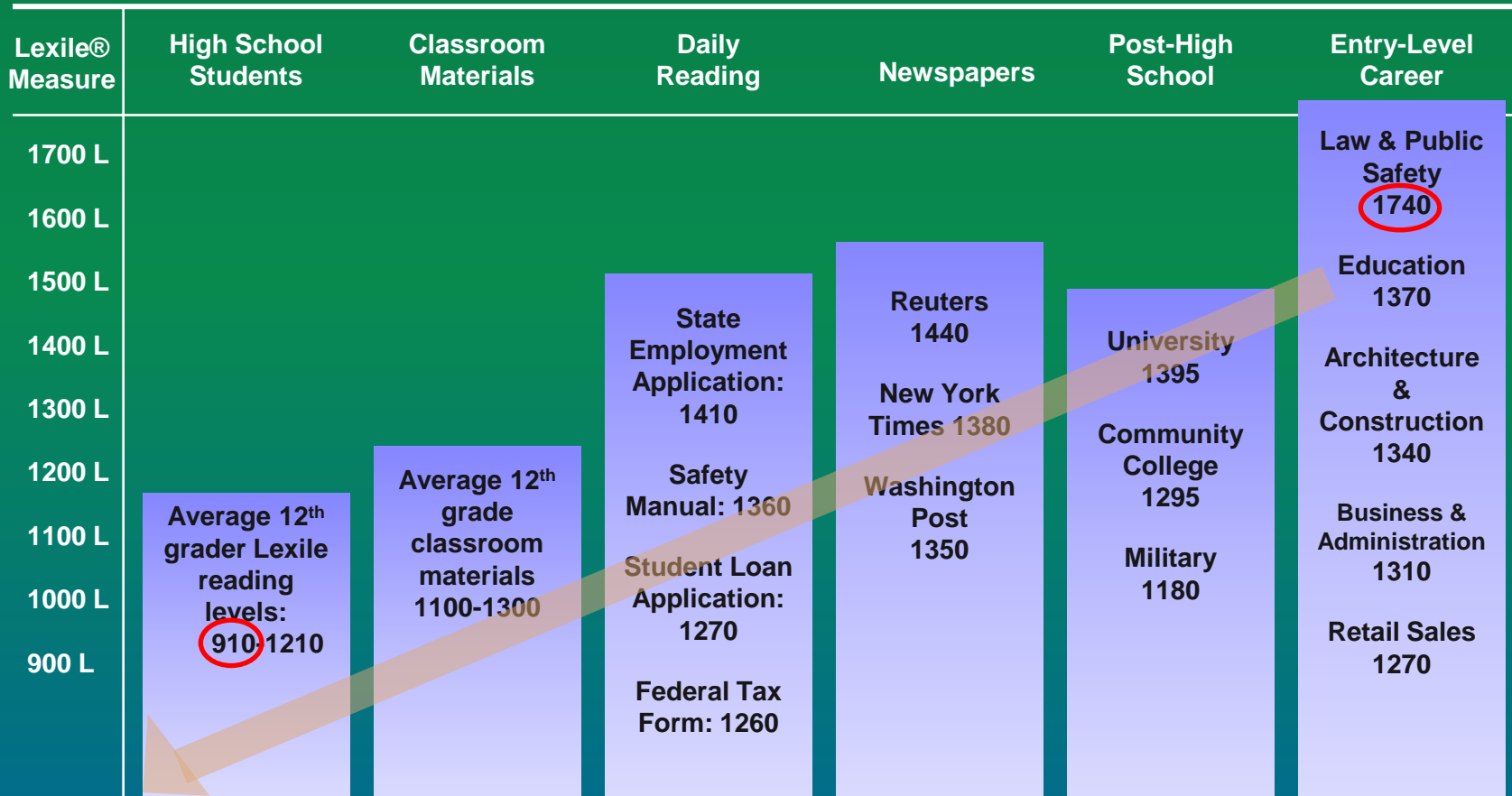
Ensure that our students are ...



Meeting college and career expectations.



Lexile Levels



CCSS Overarching Goals

Ensure that our students are ...



Provided a vision of what it means to be a literate person in the 21st century.



Today's Learner



Portrait of a Student Who Meets the CCSS



Demonstrates Independence

Builds Strong Content Knowledge

Responds to Demands of Audience, Task, Purpose, & Discipline

Comprehends as Well as Critiques

Values Evidence

Uses Technology and Digital Media Strategically

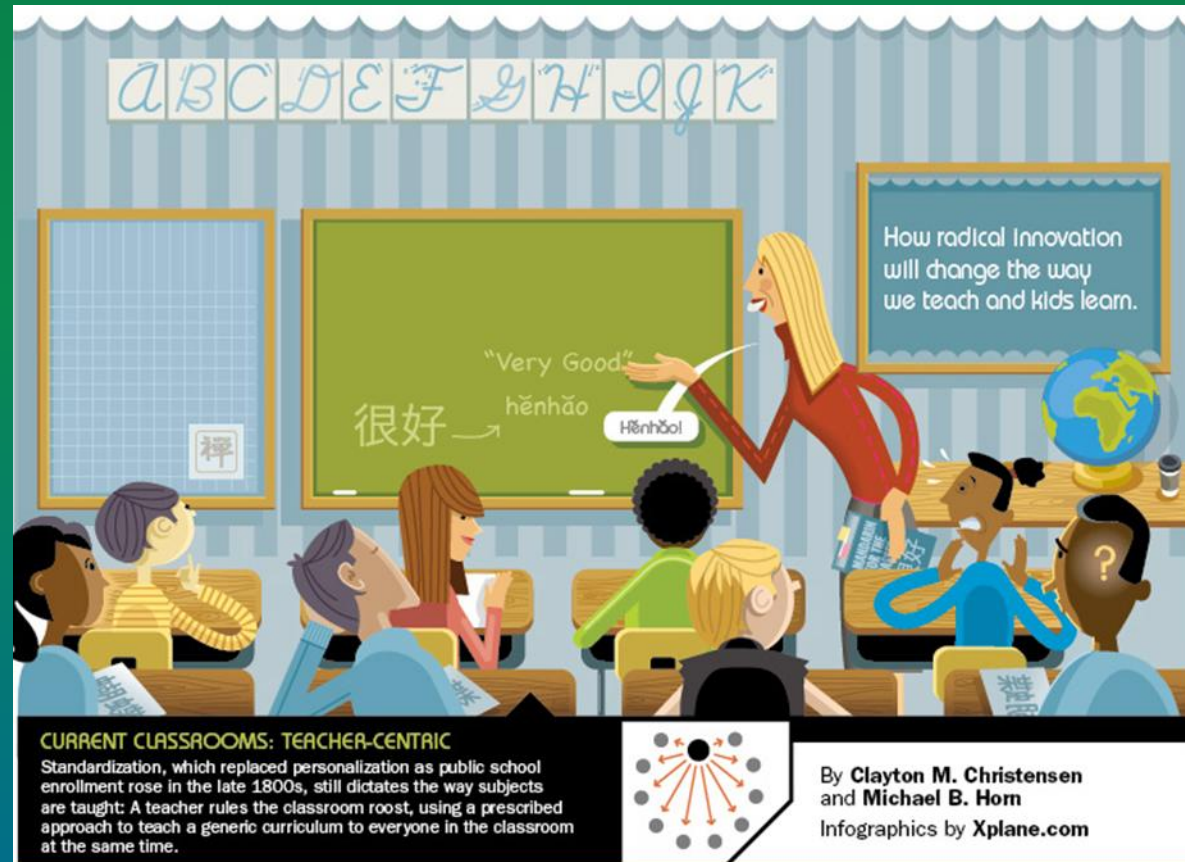
Understands Other Perspectives and Cultures

Problem Solves and Perseveres

Old Delivery “Teacher-Centric”

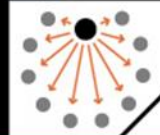


- Teacher delivers content – “sage on stage.”
- Students required to learn at same pace.
- 1 to 30 teacher/student ratio.



CURRENT CLASSROOMS: TEACHER-CENTRIC

Standardization, which replaced personalization as public school enrollment rose in the late 1800s, still dictates the way subjects are taught: A teacher rules the classroom roost, using a prescribed approach to teach a generic curriculum to everyone in the classroom at the same time.

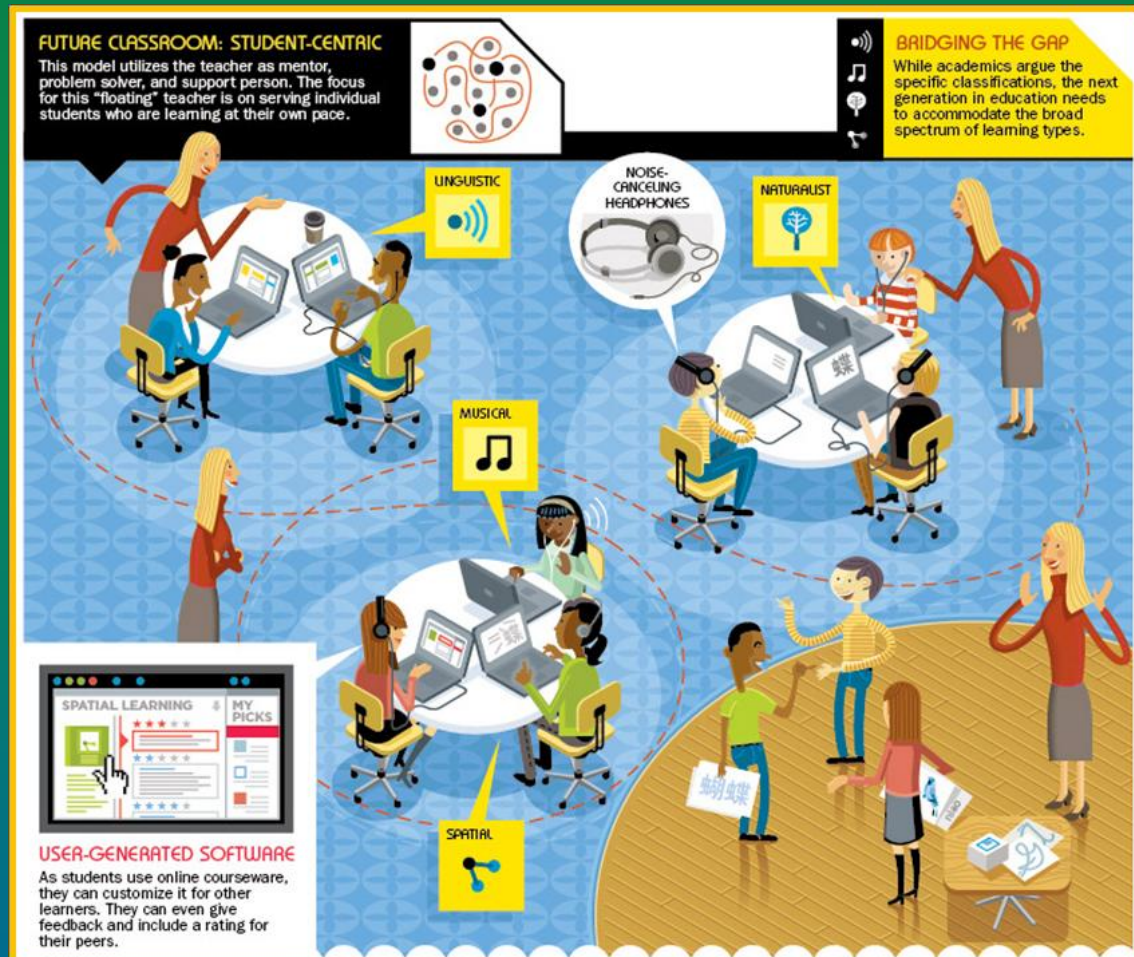


By Clayton M. Christensen
and Michael B. Horn
Infographics by Xplane.com

New Delivery “Student-Centric”



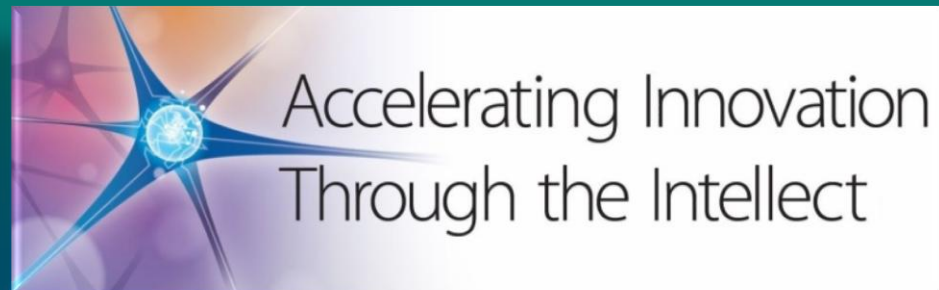
- Utilizes the teacher as mentor, problem solver, and support person.
- Personalized, student centric, real time, always on.
- New ratio – time per student, not teacher per student
- Online tutor 24/7



Enrique S. Camarena Elementary School



Opened July 2013



alright so we've been talking about our
problems



Community Support



Chula Vista Elementary School District: Accelerating Innovation

*Report to the
Chula Vista City Council
January 14, 2014*



Questions?