

Committed to progress

Leading the way in clean transportation



A  Sempra Energy utility®



City of Chula Vista – Sept. 12, 2017



3,500
charging stations

350
Business, condos,
apartments

POWER YOUR DRIVESM

10%

No cost to properties in disadvantaged communities.

✓ One-time low cost for others.



Installed, owned, operated, maintained and billed by SDG&E at no additional cost.

✓ Drivers or property billed on SDG&E bill.



Hourly rate encourages charging at cheapest off-peak times.



Integrates renewable energy with the grid. Reduces need for more power plants.



500+ properties have requested chargers.



City of Chula Vista EV Charging – 123



A collaborative process with City staff to site chargers in the most optimum locations.

- Chula Vista Civic Center – 34
 - Fleet – 18 chargers
 - Employees – 16 chargers
 - \$0 – disadvantaged community
- Chula Vista Public Works – 37
 - Fleet – 24 chargers
 - Employees – 13 chargers
 - \$23,310 (\$630 per charger)
- Chula Vista Police Department – 52
 - Fleet – 35 chargers
 - Employees – 17 chargers
 - \$32,760 (\$630 per charger)
- Total: \$56,030 (avg. \$456 per charger)

Questions



Lianna Rios

Customer Solutions Project Manager
Clean Transportation

SDG&E

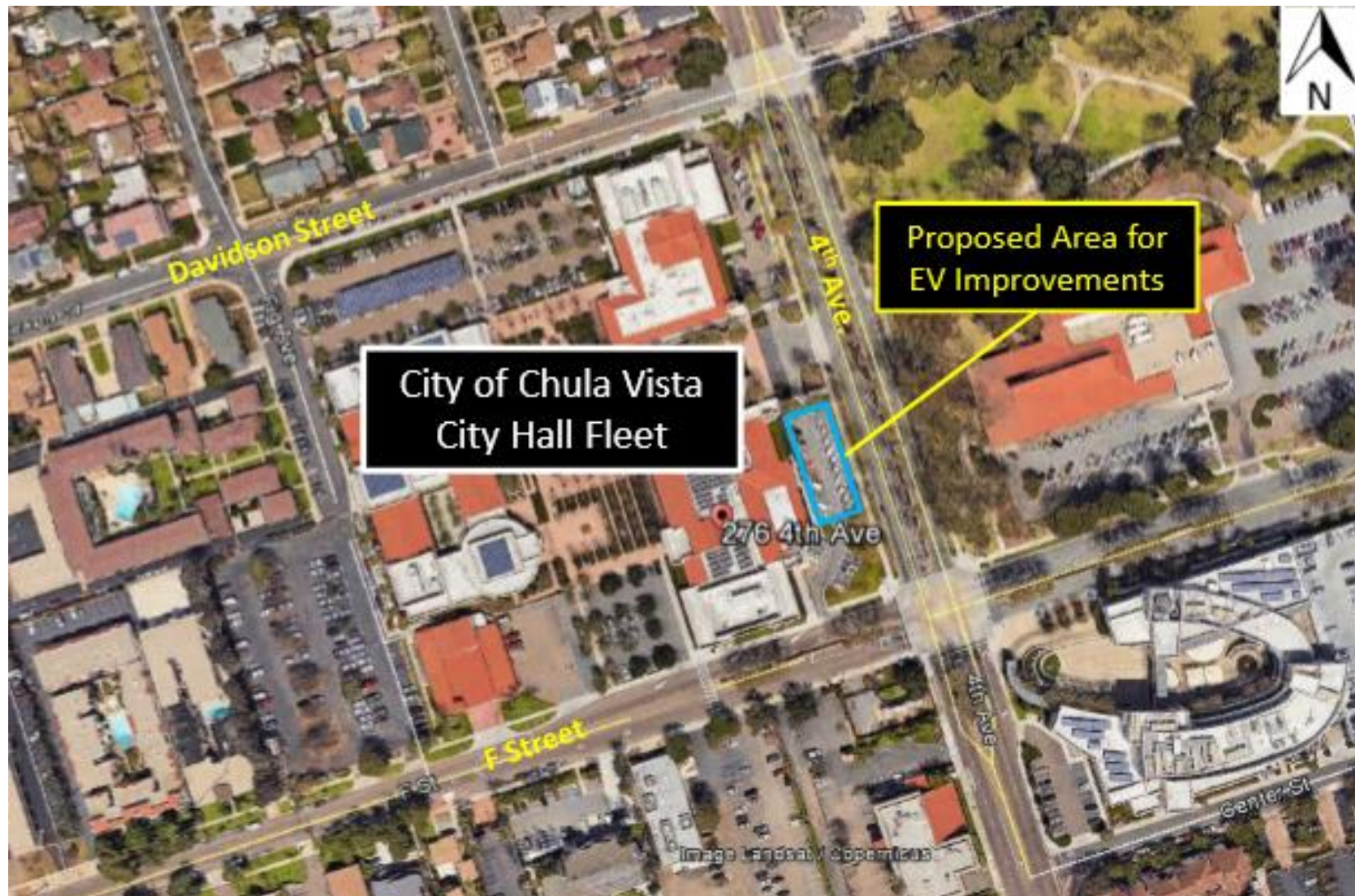
LHRios@semprautilities.com

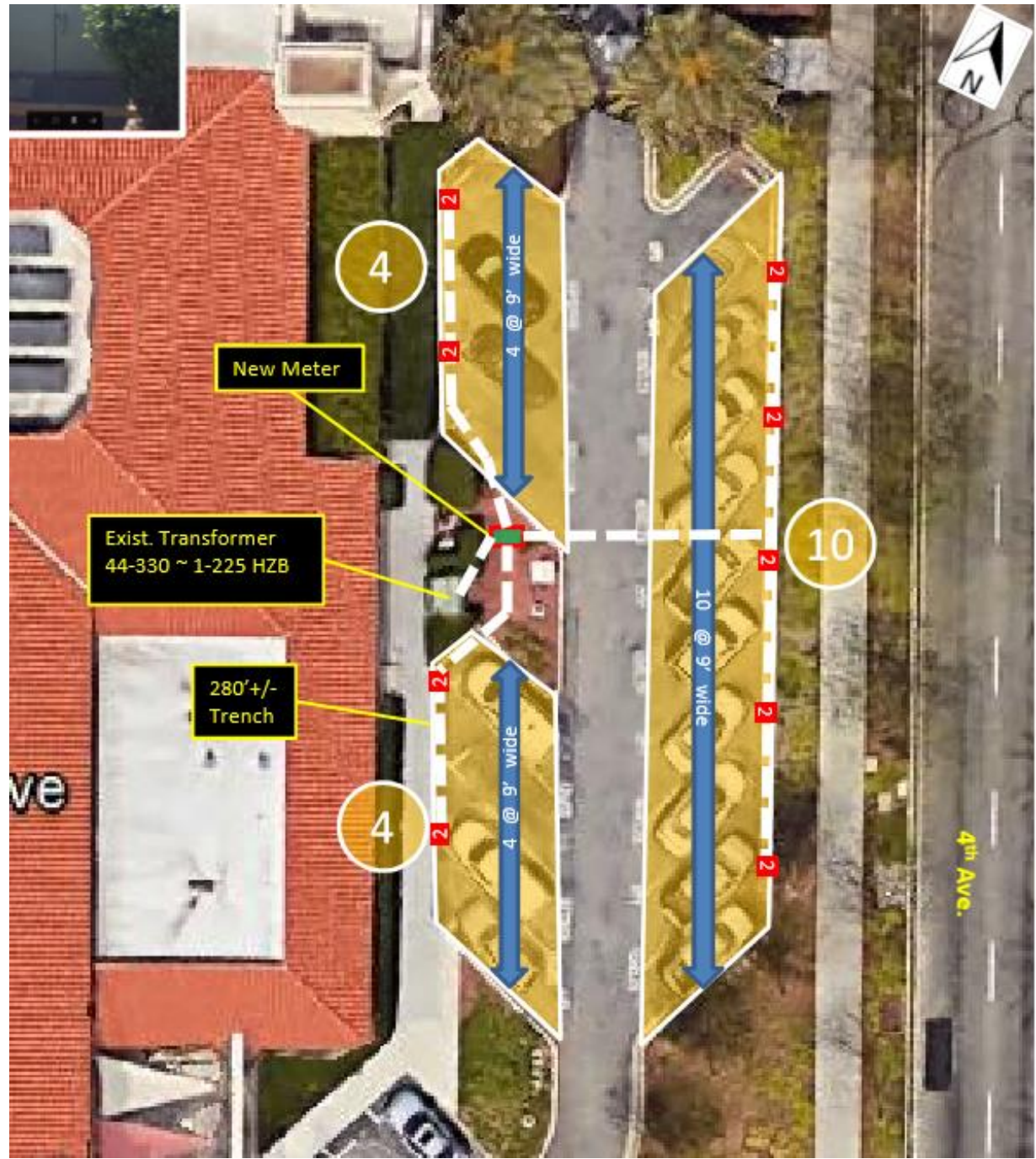
Appendix

Chula Vista Civic Center – 16 Employees



Chula Vista Civic Center – 18 Fleet

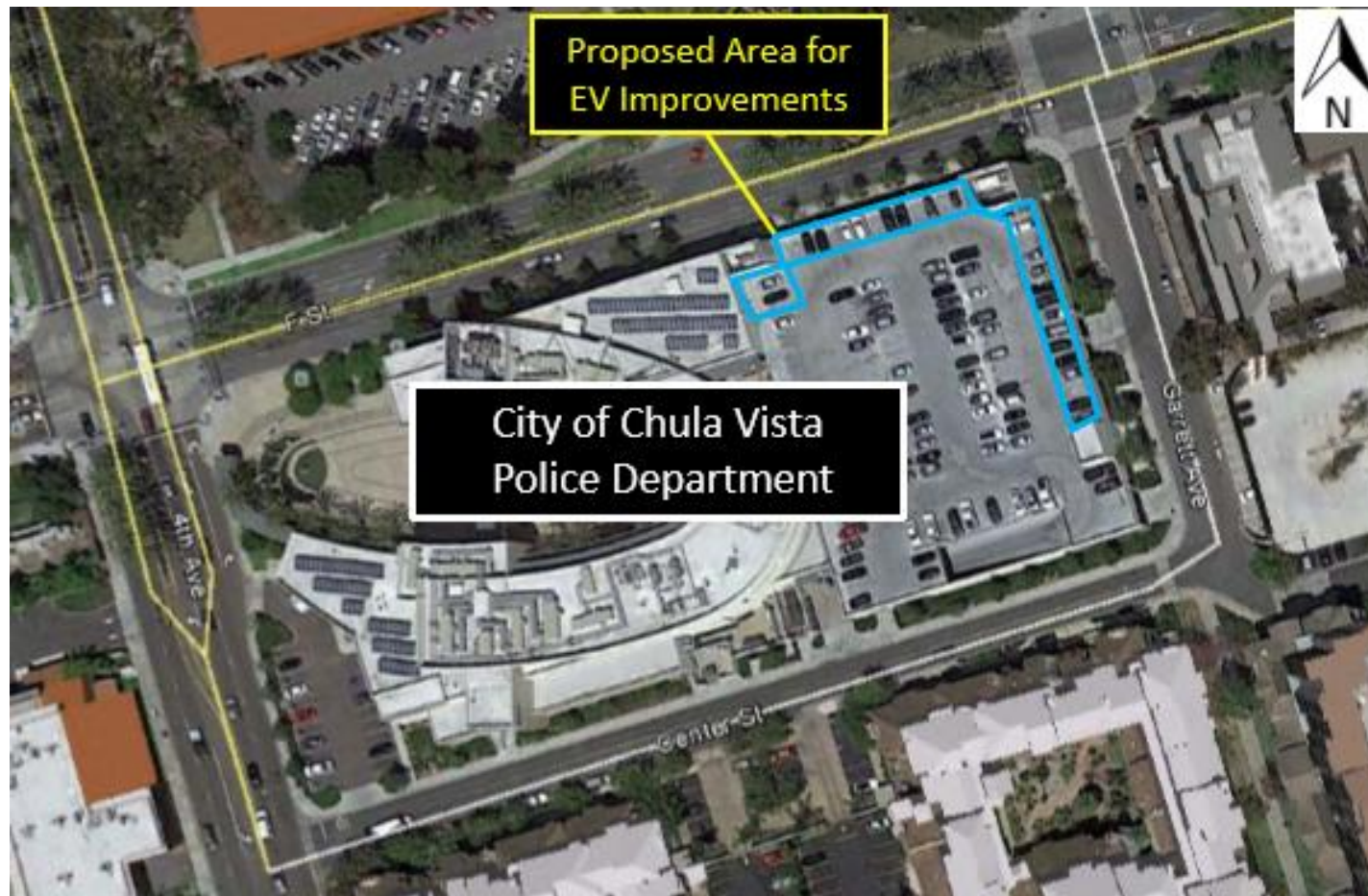




Chula Vista Public Works 24 Fleet, 13 Employee



Chula Vista Police Department 36 Fleet, 16 Employee



Police Department – 1st Floor Simulation 21 Fleet



Police Department – 2nd Floor 15 Fleet & 16 Employee

