



## CONCEPT

*A natural park with early California influences offering unique recreation opportunities within a passive setting -*

## SUMMARY

- 5.1 acre park site
- Off-site parking with one ADA space provided
- One restroom building
- 20' grade change over 285' x 775' +/- park (2% gradient)

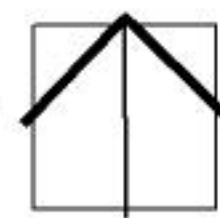
## PARK PROGRAM

- Santa Barbara inspired "public" architecture
- Strong visual and physical orientation to schools and multi-family sites
- Pedestrian connections to adjoining Village Promenade streetscape
- Architecture consistent with park focal point, with pedestrian links to Village Promenade along Santa Christina and Santa Carolina
- Village structure design elements consistent with Village Design Plan
- Children's play equipment
- Community gathering space
- Shade structure
- Direct access to school that is gated and controlled by school
- Multi-use field area
- Grass play / teaching space

**P5**  
PARK

LOCATION MAP

North



# DRAFT LANDSCAPE MASTER PLAN for VILLAGE 2, PARK P-5

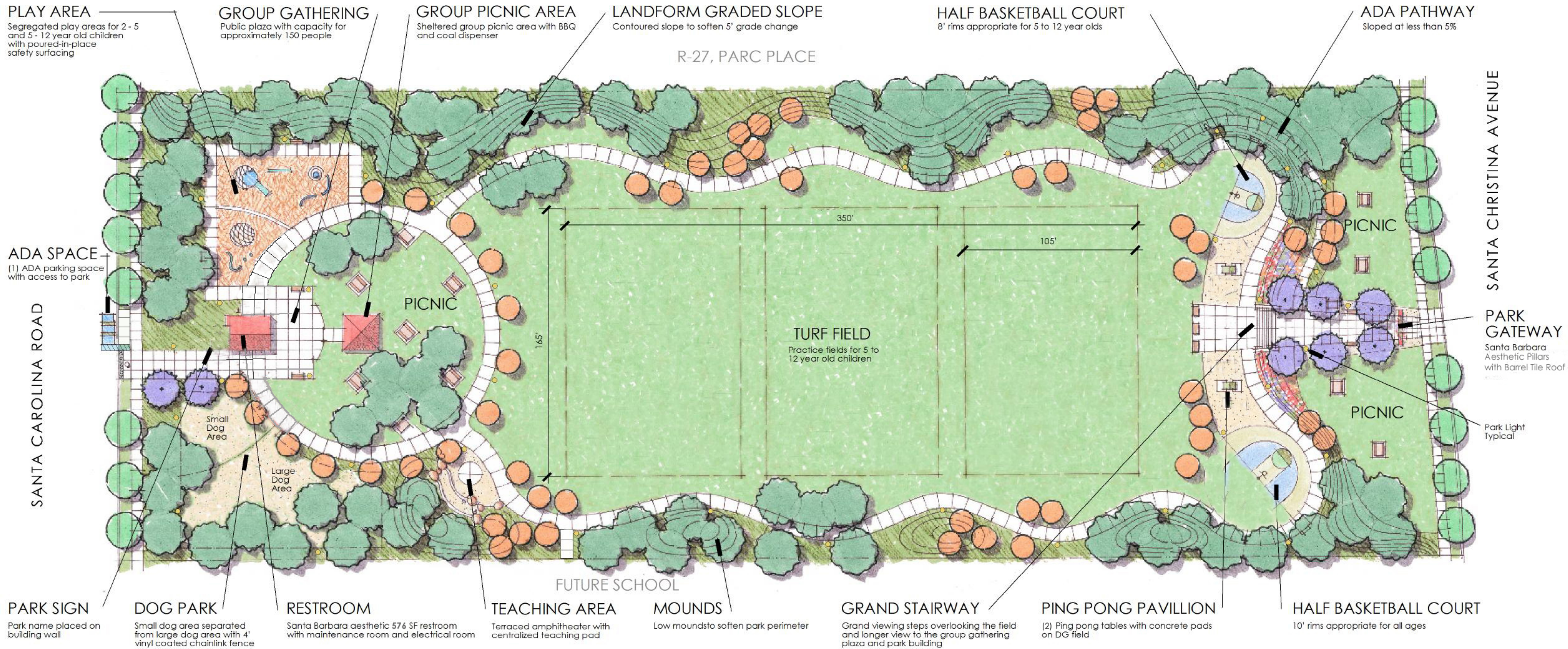
AUGUST 28, 2018



MW PELTZ + ASSOCIATES, INC.  
LANDSCAPE ARCHITECTURE  
143 S. CEDROS AVENUE  
SOLANA BEACH, CA 92075  
858 481.0888 | PLA 2010







DOG PARK



TEACHING AREA



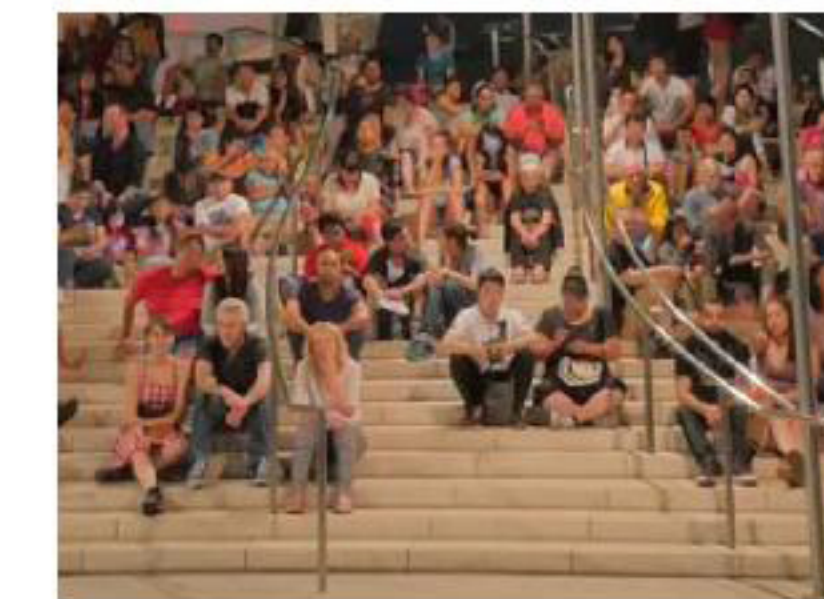
TURF FIELD



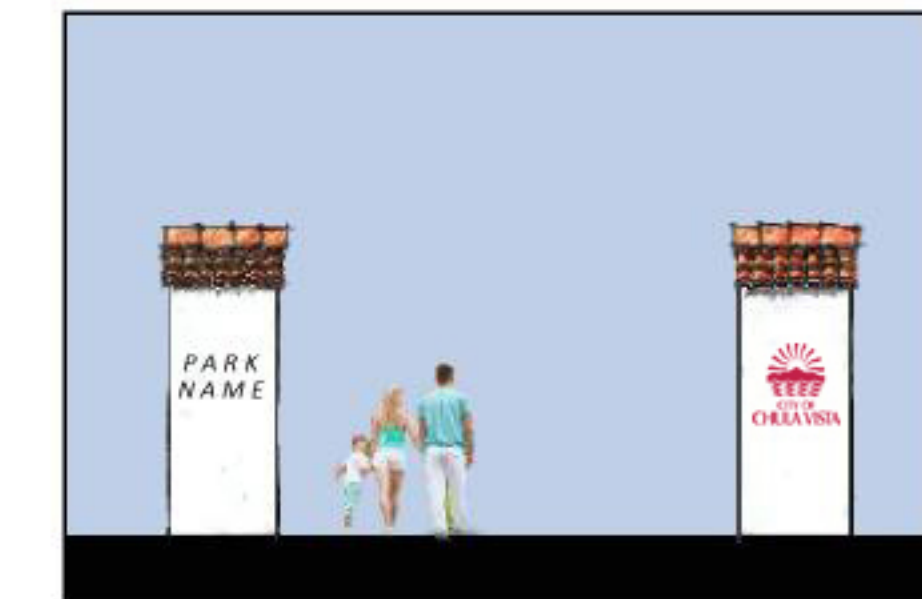
BASKETBALL COURT



PING PONG TABLE



GRAND STAIRCASE

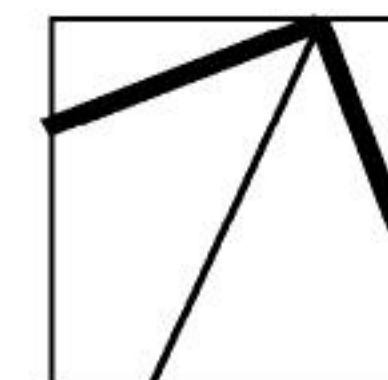
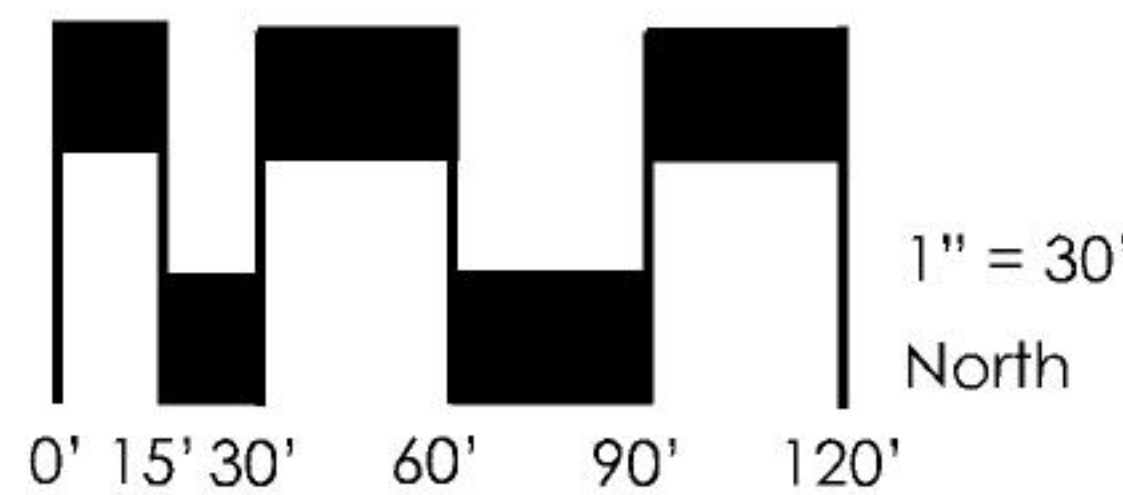


PARK GATEWAY

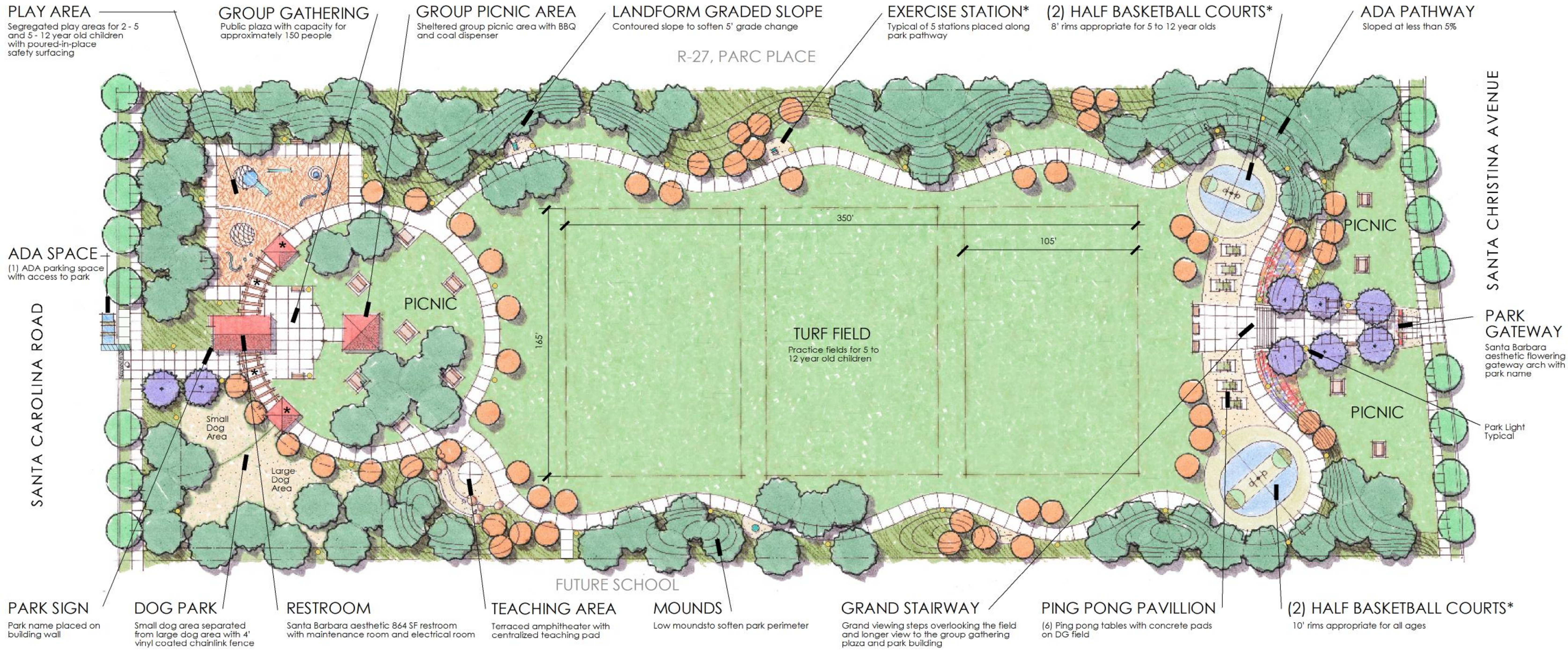
# PARK MASTER PLAN

P5 PARK SITE

AUGUST 28, 2018







DOG PARK



TEACHING AREA



EXERCISE STATION\*



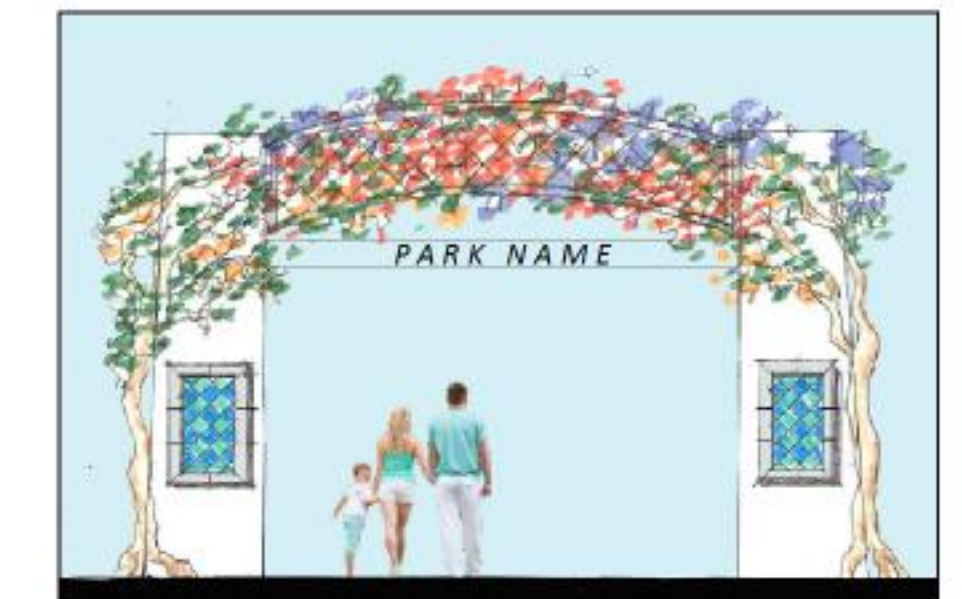
BASKETBALL COURT\*



PING PONG PAVILLION



GRAND STAIRCASE



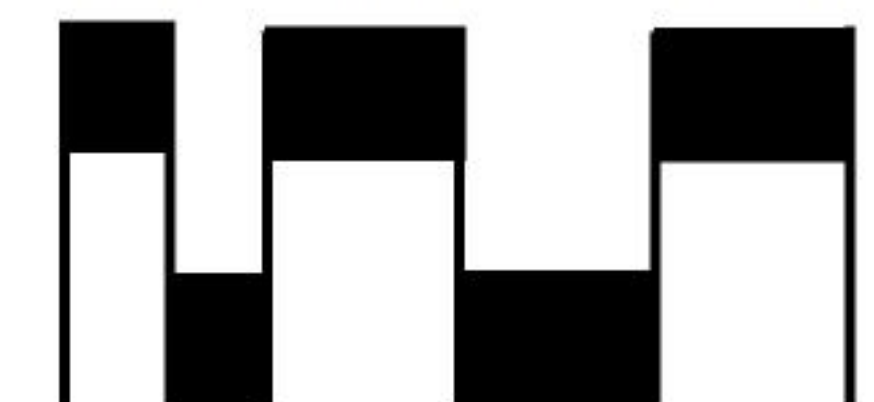
PARK GATEWAY

# PARK MASTER PLAN+

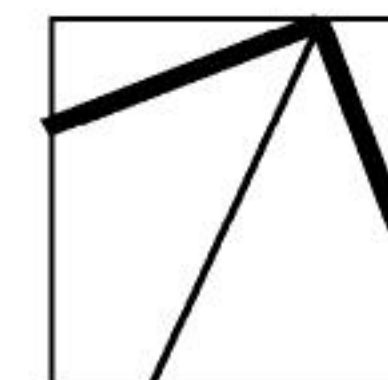
P5 PARK SITE

AUGUST 28, 2018

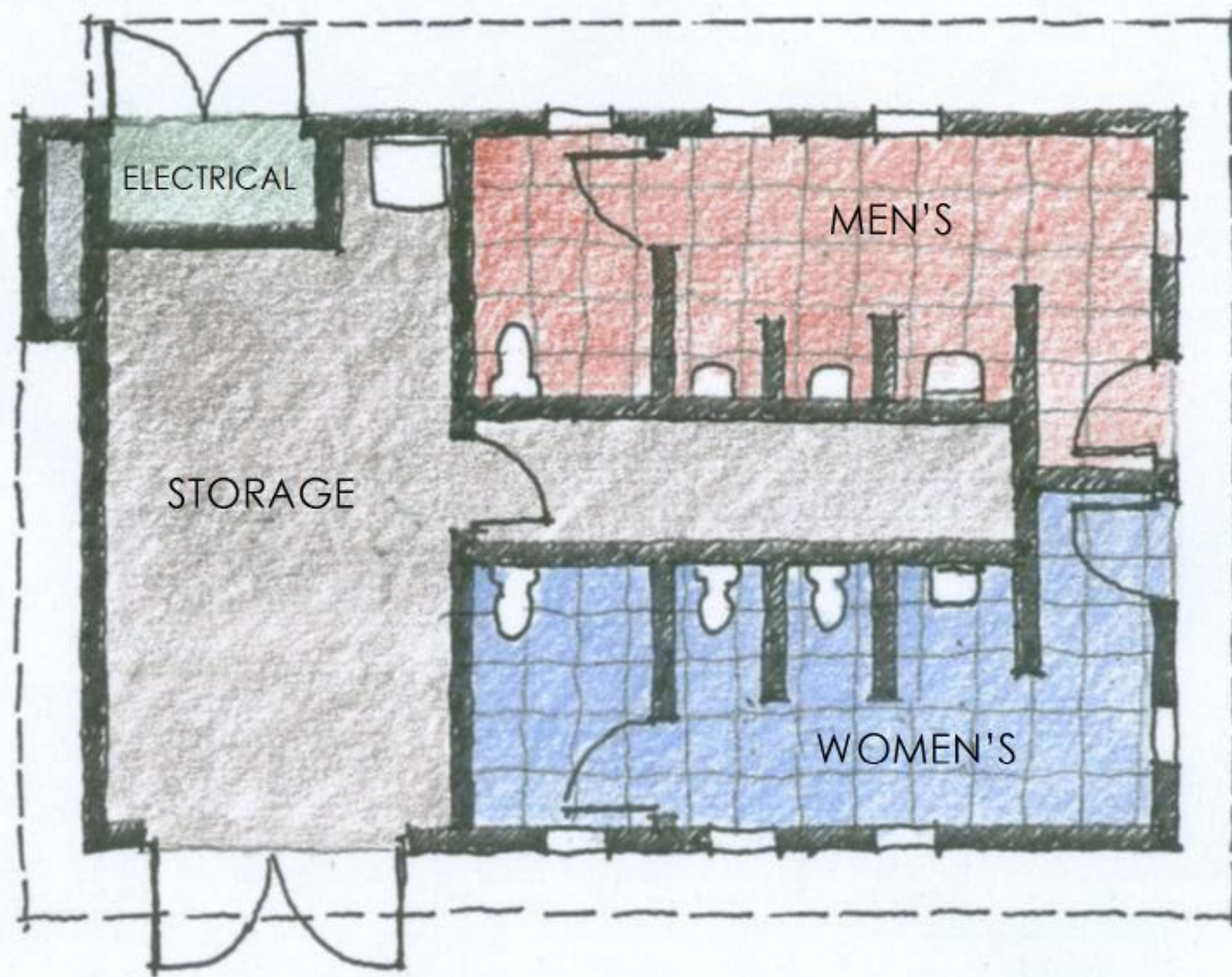
\*DEDUCTIVE ALTERNATIVE



1" = 30'  
North







**FLOOR PLAN**

Building will be sized to meet the available budget.

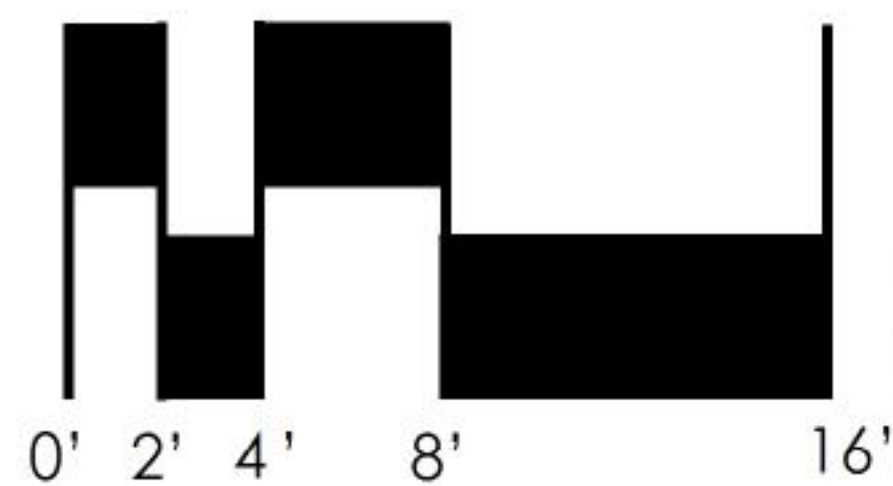


**PERSPECTIVE VIEW**

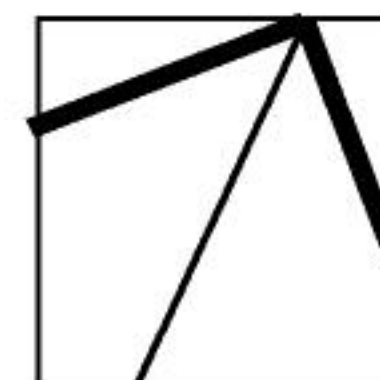
**COMFORT STATION**

P5 PARK SITE

AUGUST 28, 2018



1/4" = 1'  
North



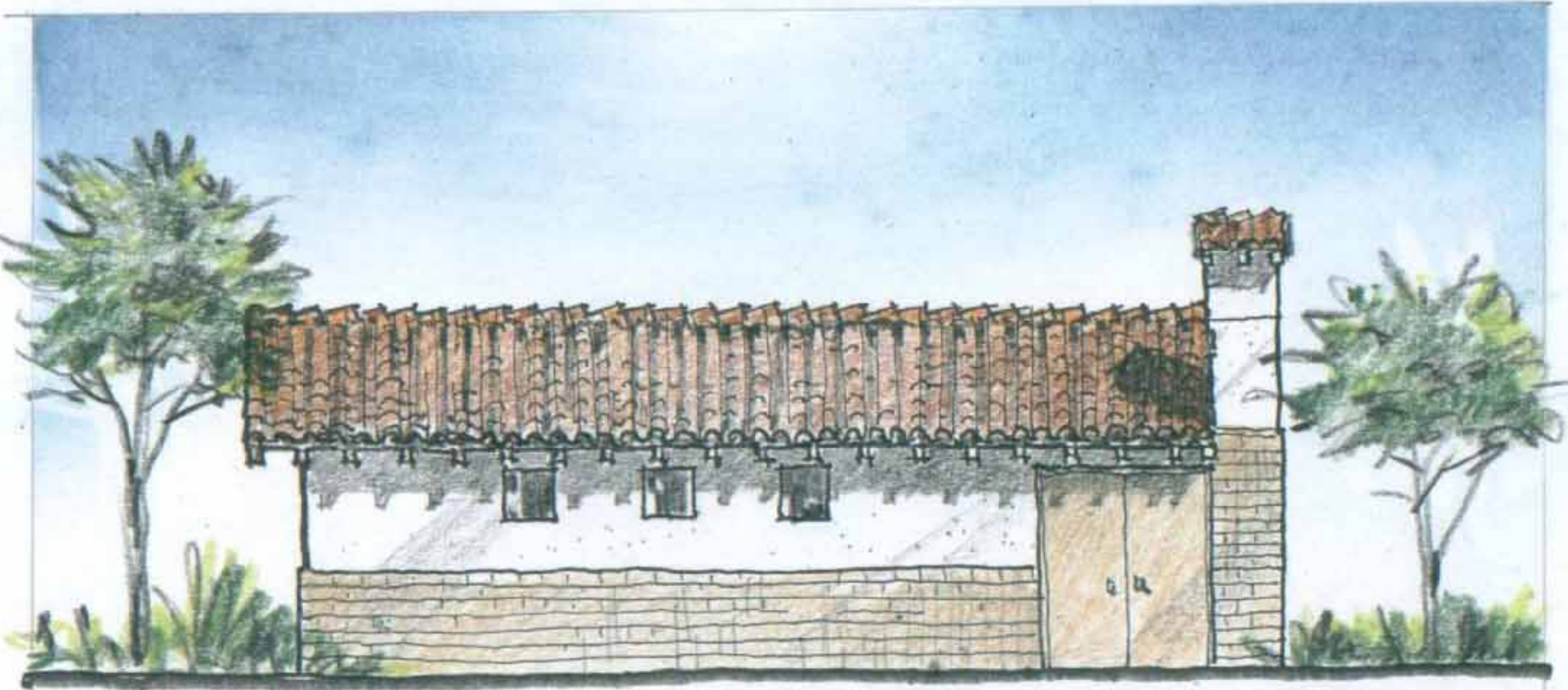




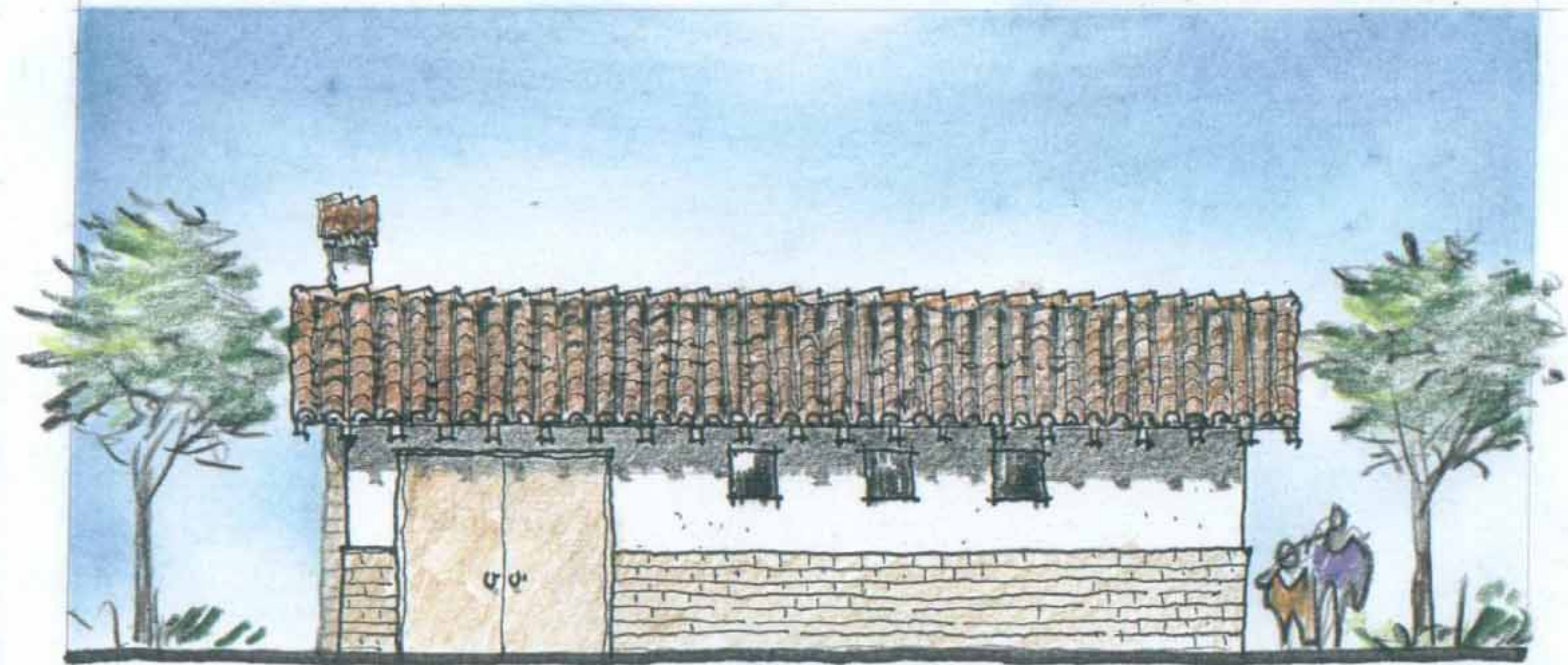
EAST ELEVATION



WEST ELEVATION



NORTH ELEVATION



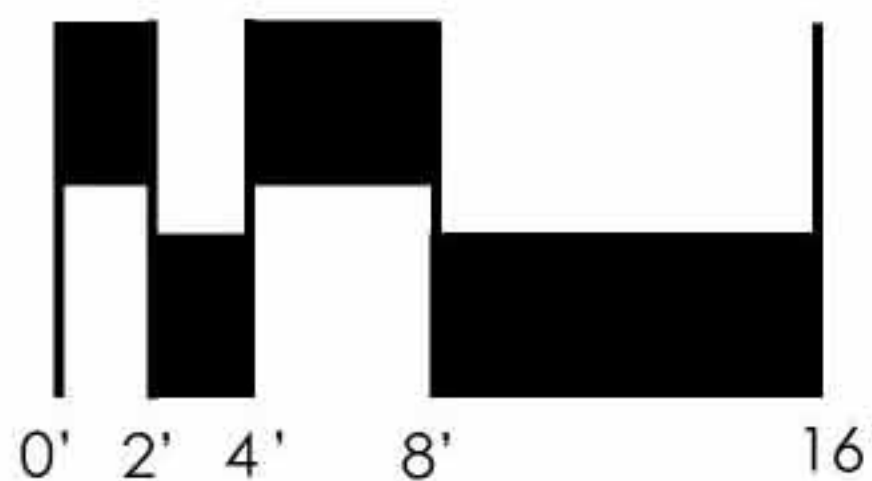
SOUTH ELEVATION

Building will be sized to meet available budget.

# COMFORT STATION

P5 PARK SITE

AUGUST 28, 2018



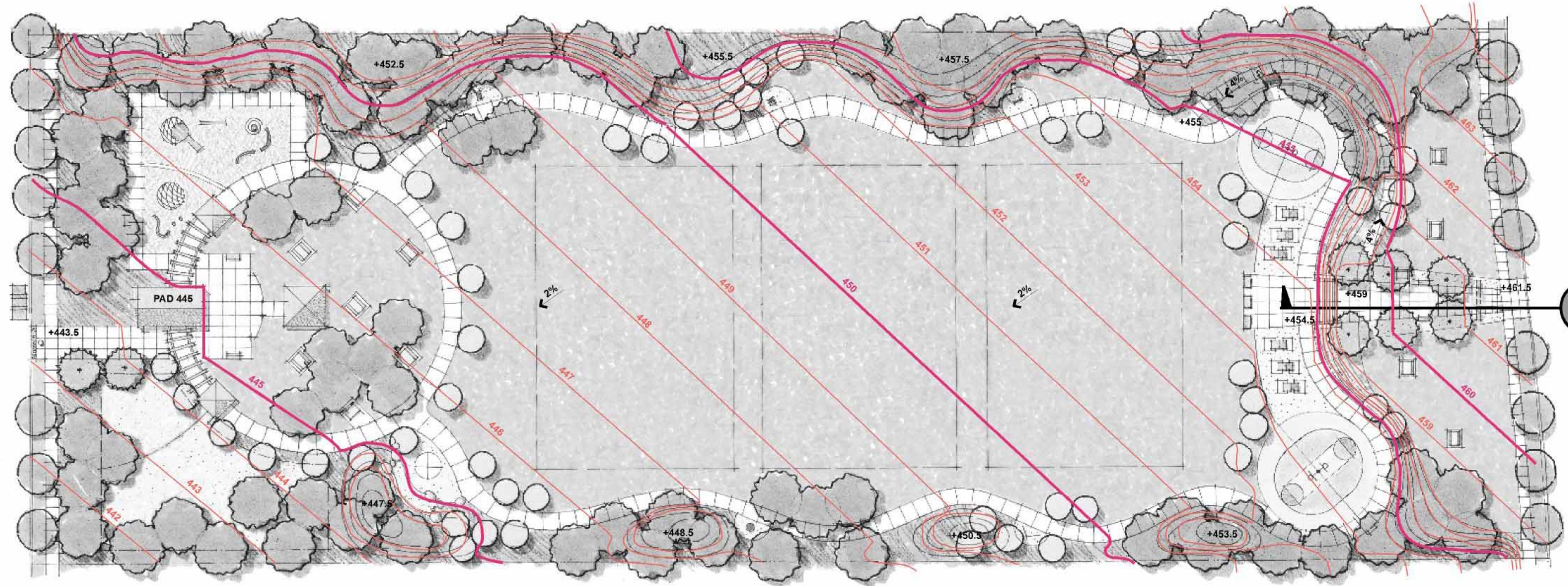
SCALE  
1/4" = 1'





SANTA CAROLINA ROAD

SANTA CHRISTINA AVENUE



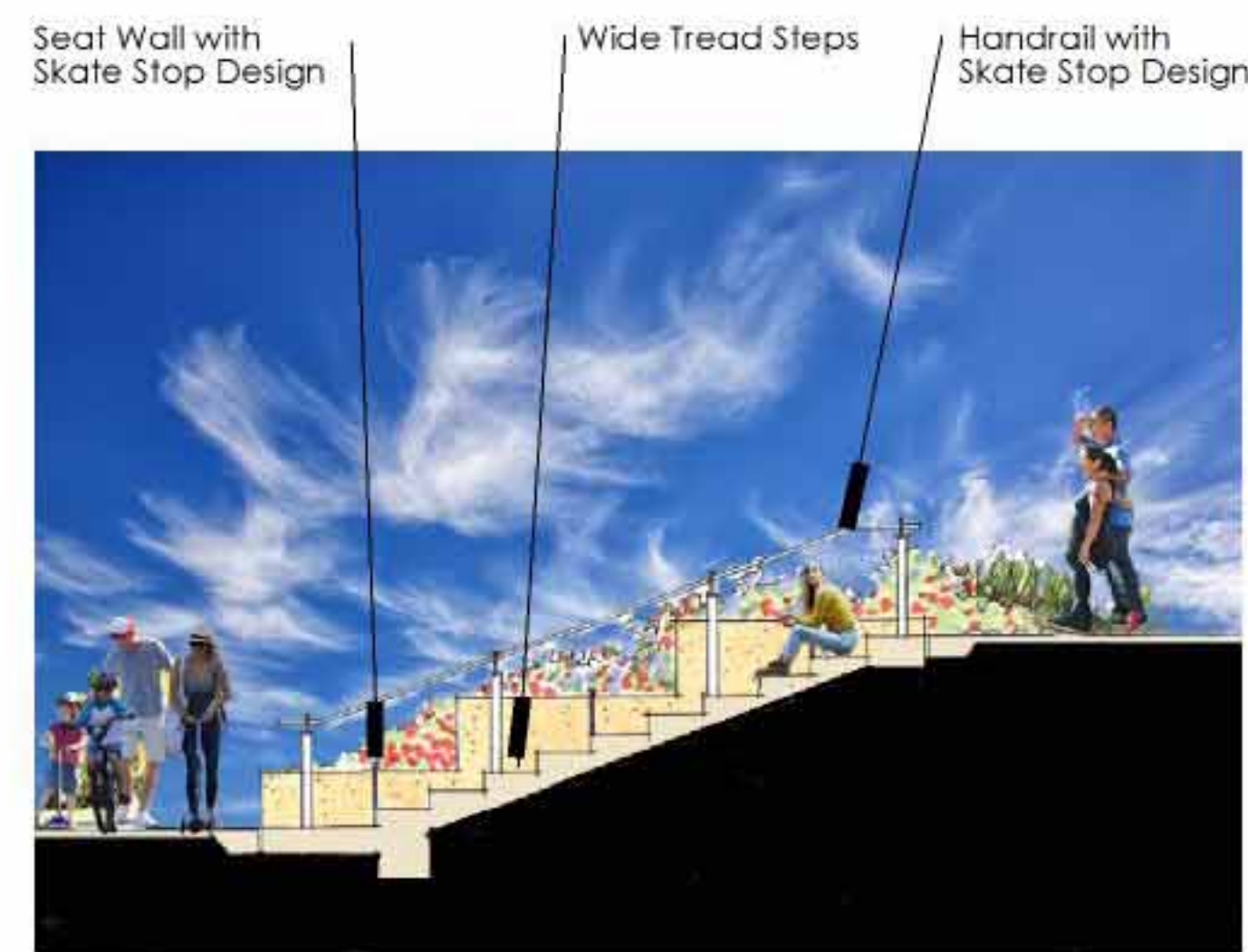
**EARTHWORK QUANTITIES**

CUT (RAW): 0 CY

FILL (RAW): 6,690 CY

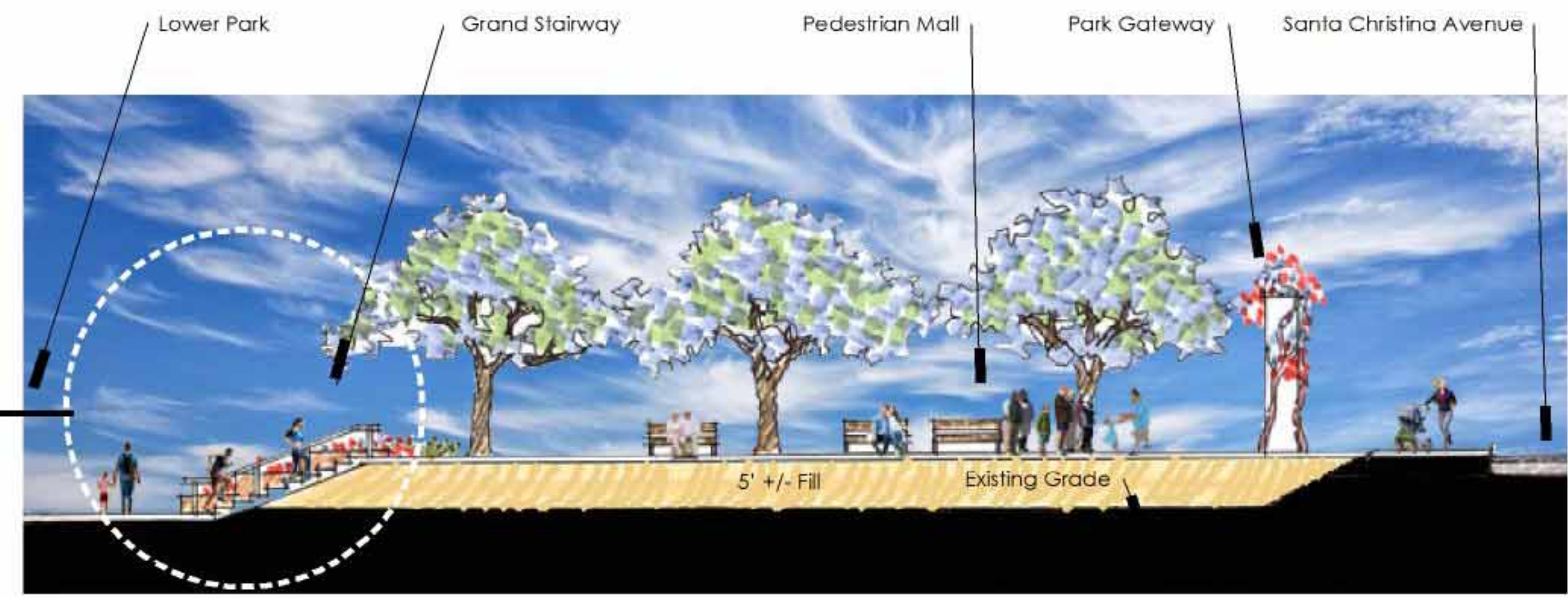
**NOTE**

Grading Quantities are Estimated for Bonding Purposes Only and are Not Intended to be Used for Final Payment Quantities



**GRAND STAIRWAY**

Not to Scale



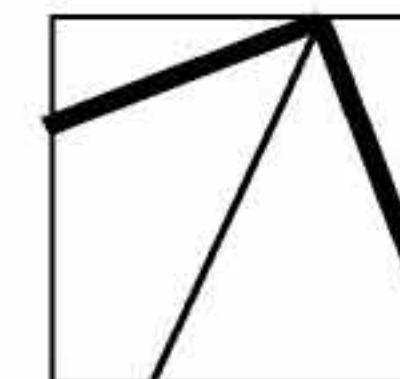
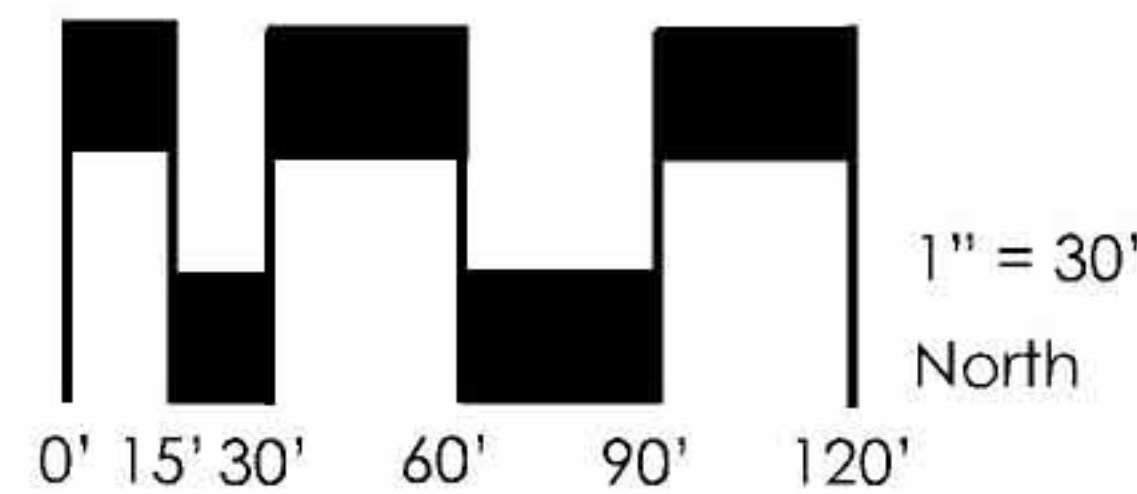
**SECTION A**

Not to Scale

# CONCEPT GRADING PLAN

P5 PARK SITE

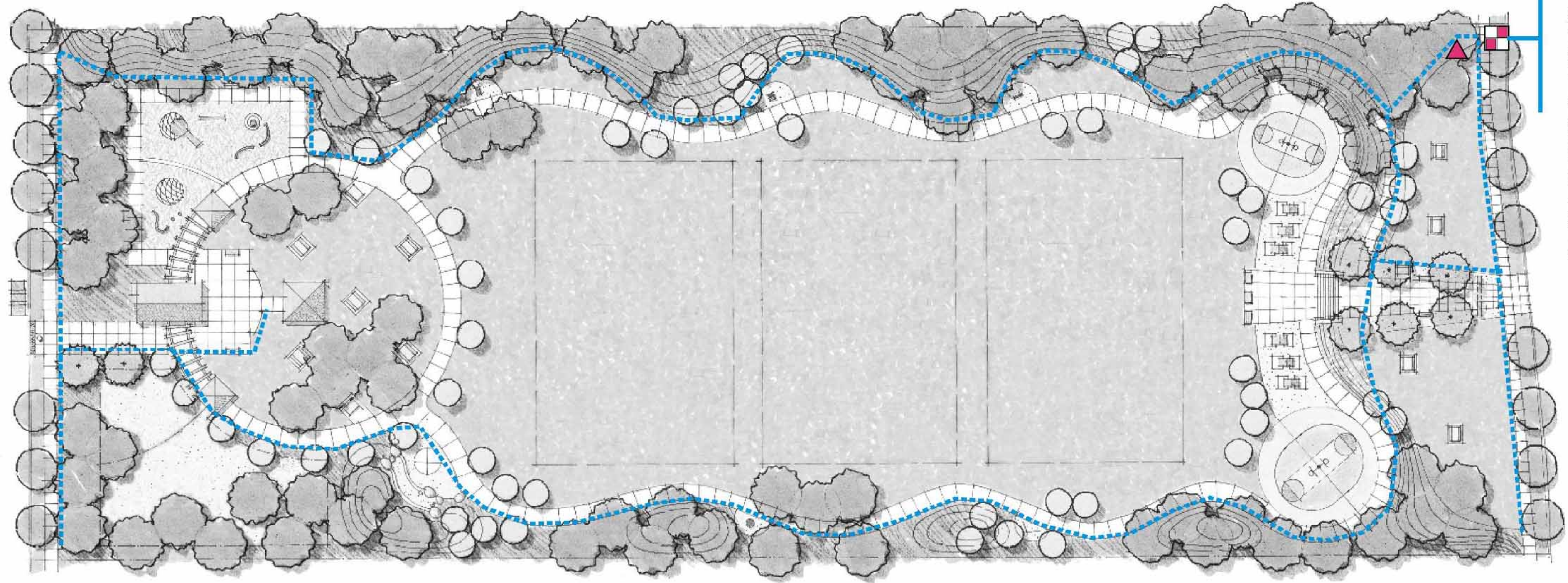
AUGUST 28, 2018





SANTA CAROLINA ROAD

SANTA CHRISTINA AVENUE



## IRRIGATION OVERVIEW




The irrigation design for the park will comply with the City of Chula Vista Water Conservation Ordinance, Chapter 20.21 of the Municipal Code.

Plants will be grouped with others of similar water requirements so that irrigation will be most effective and plants will be healthy and easier to maintain. An efficient irrigation system will be designed with a weather based smart controller and rain sensors to monitor rainfall and adjust the system automatically.

Mulch will be utilized to minimize moisture loss throughout the planting areas.

Turf and large shrub areas will be irrigated with Hunter Industries 6" and 12" pressure regulated pop-up spray bodies combined with Hunter MP Rotator nozzles to maximize water use through matched precipitation and slower application rates than traditional fixed-spray nozzles. All trees shall be irrigated with Hunter root watering series bubblers (2 per tree). The turf fields shall be irrigated with efficient rotors such as Hunter I-20 and/or I-40. All spray systems shall be adjusted to prevent misting and minimize runoff.

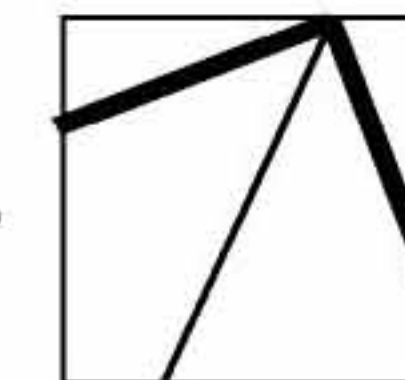
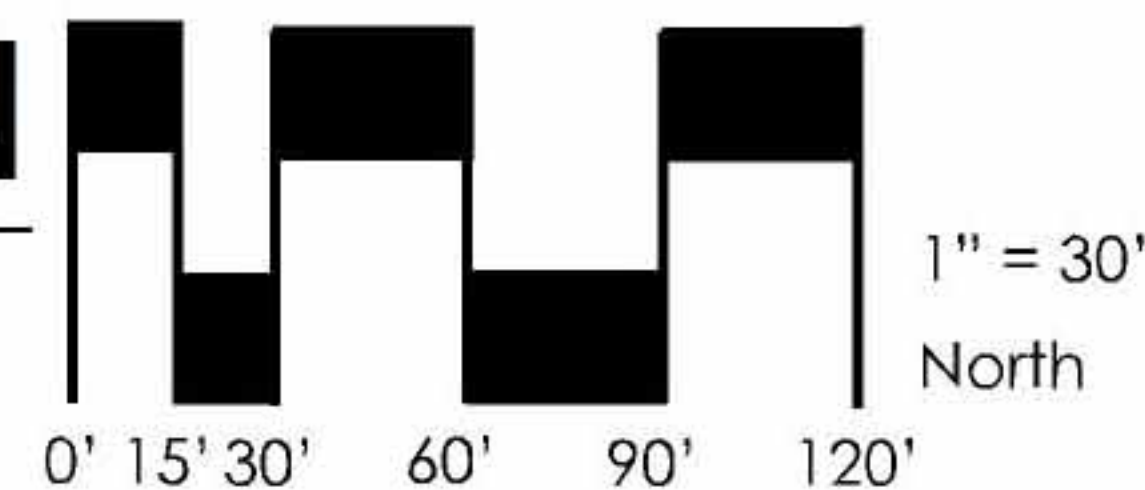
## IRRIGATION LEGEND

-  Water Meter, Wye Strainer, Pressure Regulator, Flow Sensor, Master Valve
-  Smart Controller
-  Irrigation Water Mainline (Recycled)

# CONCEPT IRRIGATION PLAN

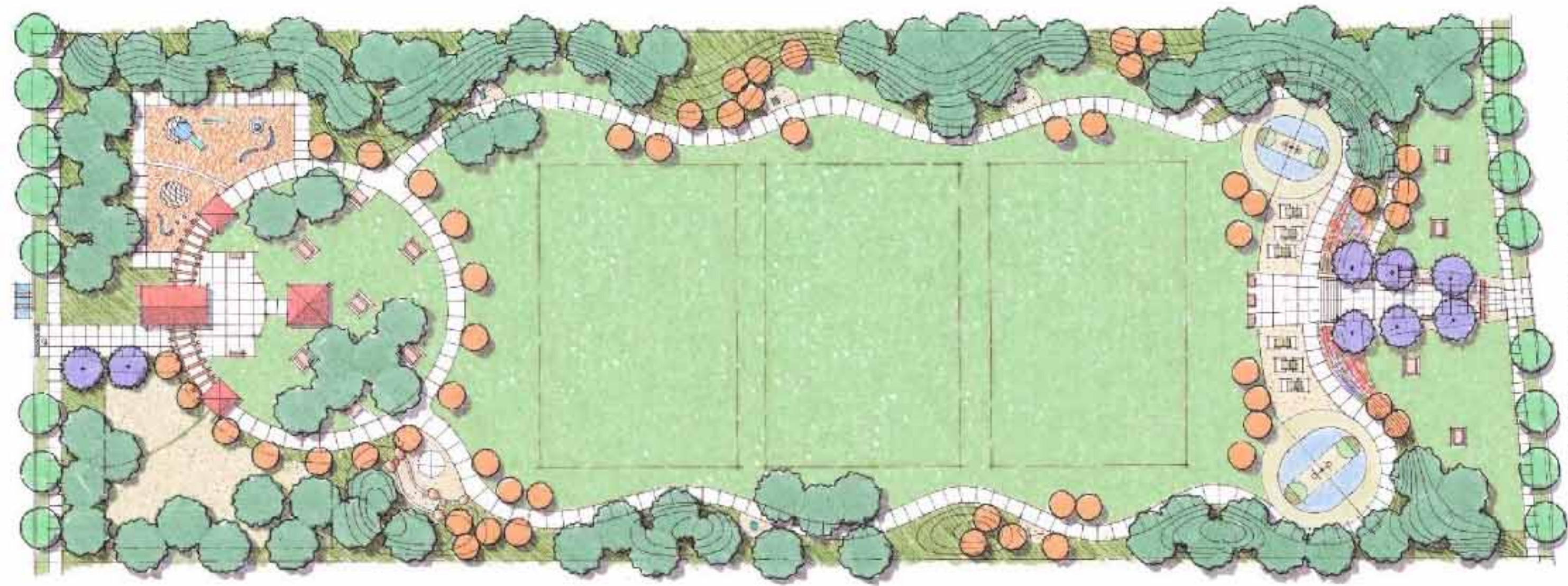
P5 PARK SITE

AUGUST 28, 2018





SANTA CAROLINA ROAD



SANTA CHRISTINA AVENUE

# TREES



JACARANDA  
*Jacaranda mimosifolia*



TULIP TREE  
*Liriodendron tulipifera 'fastigiata'*



COAST LIVE OAK  
*Quercus agrifolia*

# SHRUBS



BOUGAINVILLEA  
*Bougainvillea species*



ATLAS FESCUE  
*Festuca mairei*



BLONDE AMBITION  
*Bouteloua gracilis*



DEER GRASS  
*Muhlenbergia rigens*



CHALK STICKS  
*Senecio mandraliscae*



STONECROP  
*Sedum nussbaumerianum*



AGAVE  
*Agave species*



BUTTERFLY WEED  
*Asclepias tuberosa*



BULBINE  
*Bulbine frutescens*



CEDROS ISLAND VERBENA  
*Verbena lilacina 'De La Mina'*

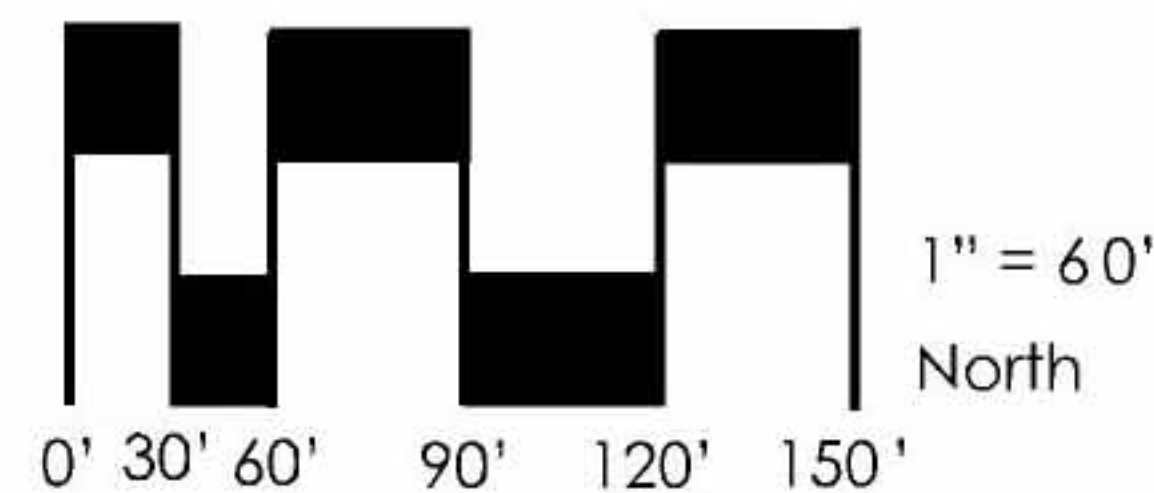


PINCUSHION FLOWER  
*Scabiosa columbaria*

# CONCEPT PLANTING PLAN

P5 PARK SITE

AUGUST 28, 2018







ENTRY PERGOLA\*



PICNIC SHELTER



PLAY EQUIPMENT AND SURFACING



BENCH



PICNIC TABLE



TABLE TENNIS



GAME TABLE



TRASH RECEPTACLE



BIKE RACK



DRINKING FOUNTAIN



EXERCISE STATION\*



LIGHT

# CONCEPT FURNISHINGS

P5 PARK SITE

\*DEDUCTIVE ALTERNATIVE

AUGUST 28, 2018

